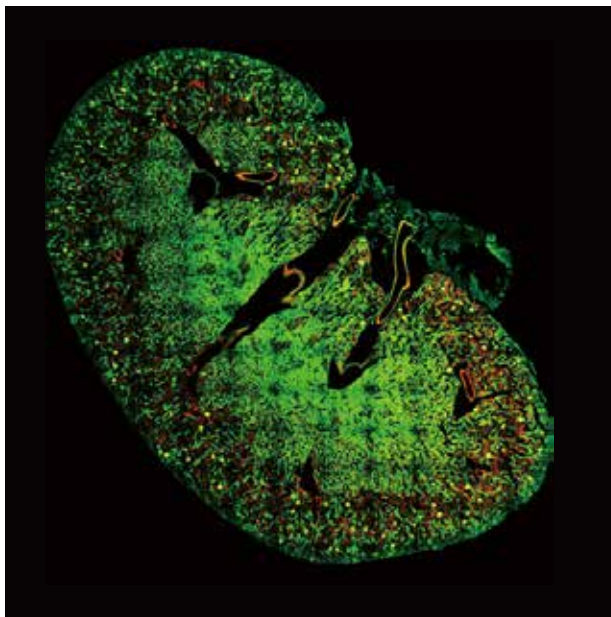


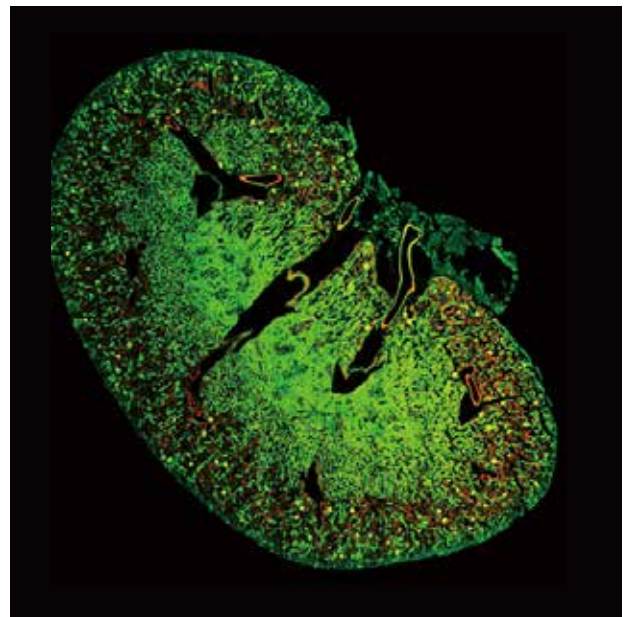
A flat-top beam shaper option

CSU-W1 Uniformizer

CSU-W1 Uniformizer



CSU-W1



with Uniformizer

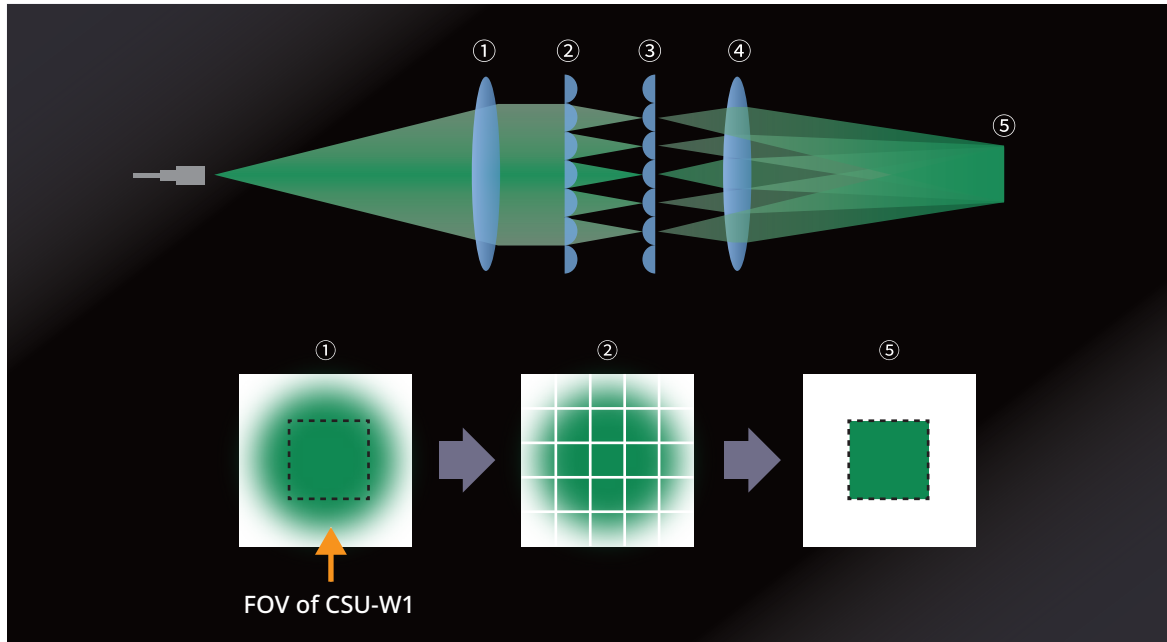
- Most suitable option for CSU-W1 illumination uniformity
- Uniform and efficient illumination of the entire wide field of view
- Upgrade your CSU-W1 on site
- Compatible with super-resolution, CSU-W1 SoRa

For more details



Principles of illumination uniformity

The Gaussian beam emitted from the fiber is converted into parallel light by a collimator lens (①). The parallel light is split into multiple square light beams by the 1st square microlens array (②). The separated light beams pass through the 2nd square microlens array (③) and a Fourier lens (④), then the beams are superimposed (⑤). At this time, the obtained brightness can be made uniform by superimposing different brightness distributions. The laser can also be used more efficiently by superimposing the light so that it matches the FOV of CSU-W1.



Product specifications

Name	Uniformizer
Loadable model	CSU-W1(1 camera model, 2 camera model, Split view model) CSU-W1 SoRa(1 camera model, 2 camera model, Split view model)
Excitation wavelength	405nm - 647nm
Laser introduction	This option cannot be configured with NIR port (685nm - 785nm).
External light path	This option cannot be configured with External light path.
External dimensions	Main unit : 510(W)×540(L)×252(H)mm option unit : 416(W)×71(L)×144.5(H)mm(excl. cover and mounting screws)
Weight	Main unit : 29kg, Option unit : 4.83kg



- Safety Precautions**
- Read the user's manual carefully in order to use the instrument correctly and safely.
 - If used in combination with a laser light source, this product falls under the category of class 3B laser products. Do not look directly into the beam and avoid touching it or any other direct exposure to it.

Yokogawa Electric Corporation

Sales & Solution Center, Life Business HQ

2-9-32 Nakacho, Musashino-shi, Tokyo, 180-8750 Japan

Phone: (81)-422-52-5550

E-mail: csu_livecell_imaging@cs.jp.yokogawa.com

<https://www.yokogawa.com/solutions/products-and-services/life-science/>



The names of corporations, organizations, products and logos herein are either registered trademarks or trademarks of Yokogawa Electric Corporation and their respective holders.

Subject to change without notice.

All Rights Reserved, Copyright © 2019, Yokogawa Electric Corporation.

Represented by

Printed in Japan, 601(YK) [Ed:06/d]