

**Confocal Quantitative Image Cytometer
Software Installation Manual****IM 80J01A03-01E**

This manual describes how to install the CQ1 Software. Please read this manual carefully before using the software.

1. Software Installation Procedure

Different software installation procedures are required for new installations (offline use only) and for upgrades.

Note

The CQ1 Software can be installed on a PC other than the CQ1 control workstation and can view/analyze data measured by CQ1 (CQ1 Offline Software).
The Software is guaranteed to work only if the CQ1 Software is installed on a PC designated by Yokogawa. The CQ1 Software can be used on a different PC but it is not guaranteed that it will work. Minimum system requirements are as follows.

OS	Windows 10 Japanese/English 64bit OS
Processor	3.60 GHz
RAM	16 GByte (32 GByte ^{※1})
HDD (Built-in)	System drive (C:) 2 TB Data drive (D:) 3 TB
Display	1920 x 1200 and over ^{※2}

※1 For the fast time-lapse function (100 fps), 32 GByte of memory is required.

※2 Do not change the resolution of display when using the CQ1 Software.

For new installations:

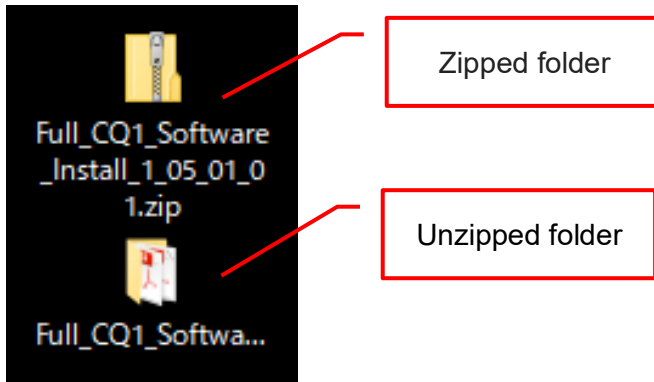
Perform procedures [1.1 New Installation](#) and [1.3 Installation of CQ1 Software](#) to [1.6 Unzip the User's Manual](#).

For Upgrades:

Perform procedures [1.2 Upgrading](#) and [1.3 Installation of CQ1 Software](#) to [1.6 Unzip the User's Manual](#). Also, when upgrading the measurement workstation software, follow the update procedure for the two drivers.

1.1 New Installation

Unzip the downloaded zipped file "Full_CQ1_Software_Install_<Version>.zip" to the desktop.

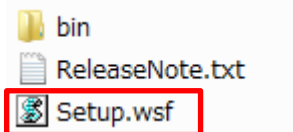


! CAUTION

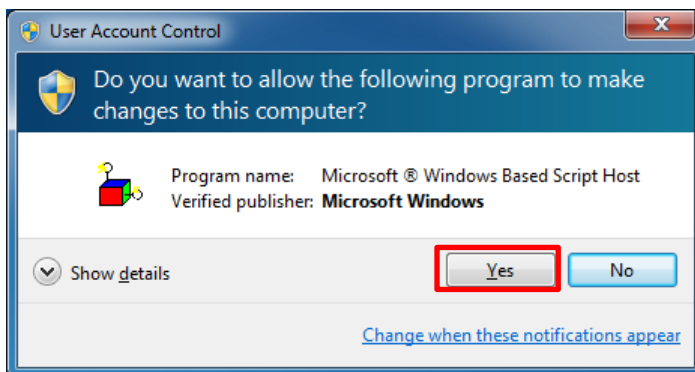
Note that unless you unzip the folder, the installer will not work properly.

1.1.1 Installation of Runtime for Offline Use

Open unzipped folder -> "1_OfflineBatch" and run "Setup.wsf".

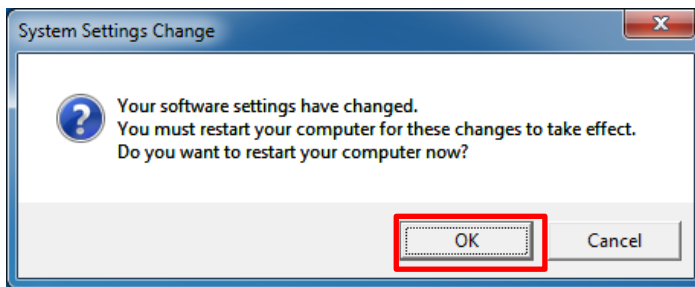


When the following window is displayed, click "Yes"



It takes about 15 minutes for installation to finish.

After finishing installation, the following window is shown. Click “OK” and the PC will restart. If there are active windows open, save them and click “OK”.

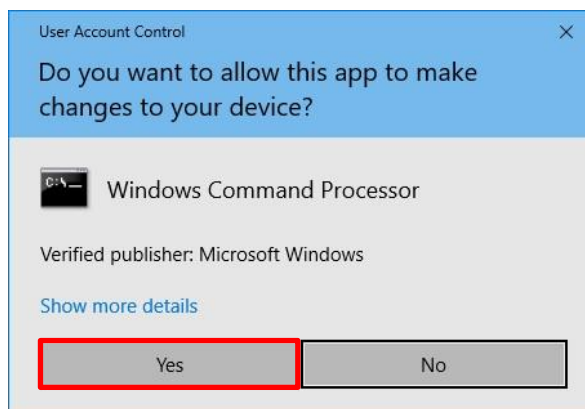


1.1.2 Installation of ImageJ

Open unzipped folder -> “4_ImageJ” and run “install_imageJ.bat”.

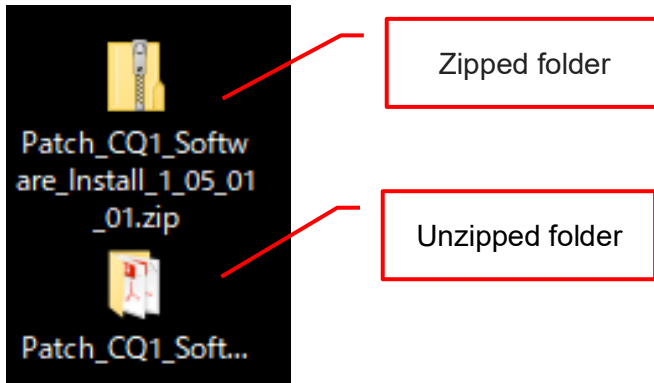


When the following window is displayed, click “Yes”.



1.2 Upgrading

Unzip the downloaded file "Patch_CQ1_Software_Install_<Version>.zip" to a desktop.



CAUTION

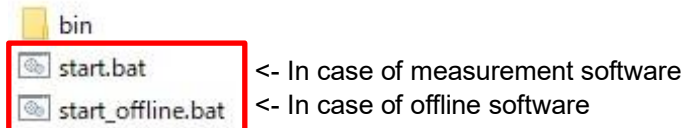
Note that unless you unzip the folder, the installer will not work properly.

1.2.1 Upgrade of runtime

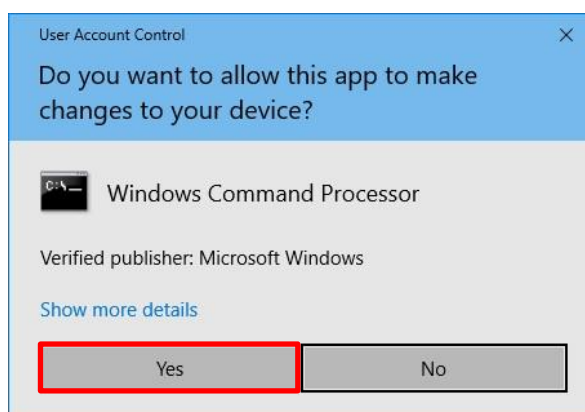
Open unzipped folder -> "2_UpdateBatch".

For measurement software, run "start.bat" to update runtime.

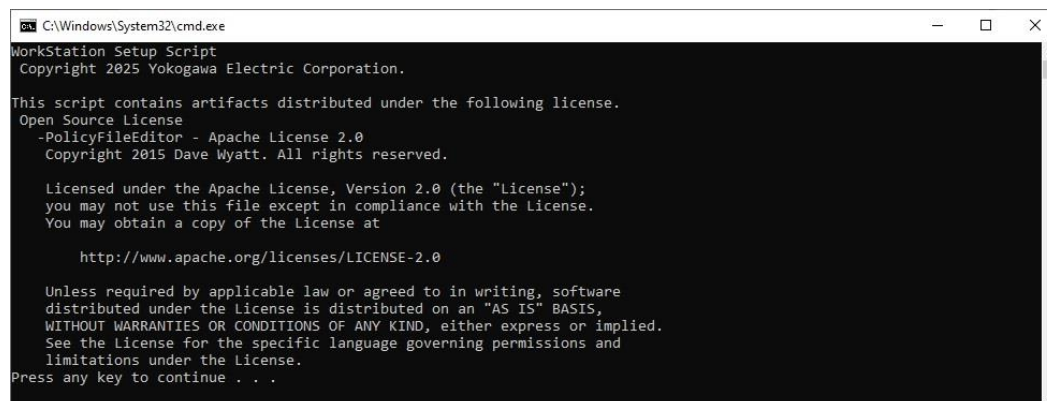
For offline software, run "start_offline.bat".



When the following window is displayed, click "Yes".



When the following window is displayed, confirm the contents and press the Enter key.



```

C:\Windows\System32\cmd.exe
WorkStation Setup Script
Copyright 2025 Yokogawa Electric Corporation.

This script contains artifacts distributed under the following license.
Open Source License
-PolicyFileEditor - Apache License 2.0
Copyright 2015 Dave Wyatt. All rights reserved.

Licensed under the Apache License, Version 2.0 (the "License");
you may not use this file except in compliance with the License.
You may obtain a copy of the License at

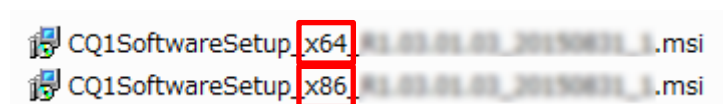
    http://www.apache.org/licenses/LICENSE-2.0

Unless required by applicable law or agreed to in writing, software
distributed under the license is distributed on an "AS IS" BASIS,
WITHOUT WARRANTIES OR CONDITIONS OF ANY KIND, either express or implied.
See the License for the specific language governing permissions and
limitations under the License.
Press any key to continue . . .
  
```

1.3 Installation of CQ1 Software

Open unzipped folder -> "3_CQ1Software".

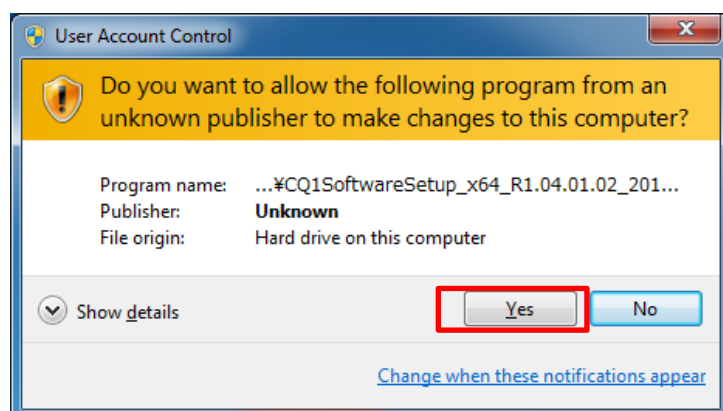
Run "CQ1SoftwareSetup_x64***.msi" to install CQ1 Software.



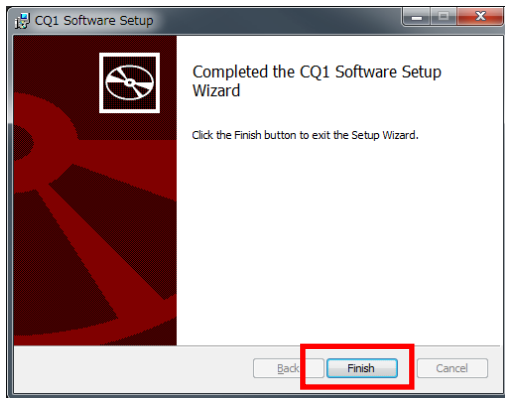
Read license agreement, check "I agree the terms in the License Agreement" and click "Install".



When the following window is displayed, click "Yes".



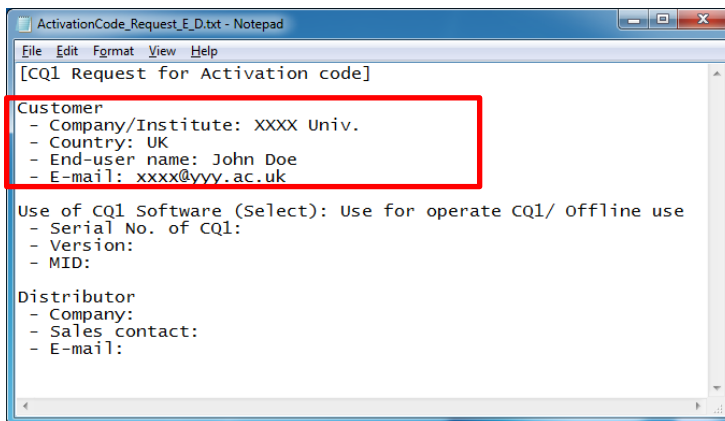
Click "Finish".



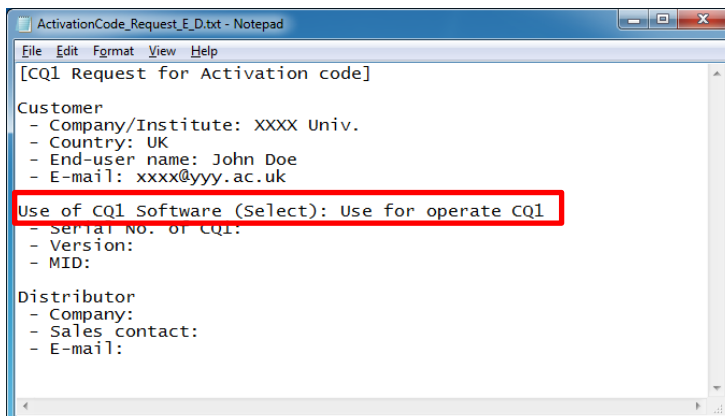
1.4 How to Request Activation code

Open unzipped folder -> "5_req_activation_code" and open "ActivationCode_Request_E_D.txt".

Put in your information.

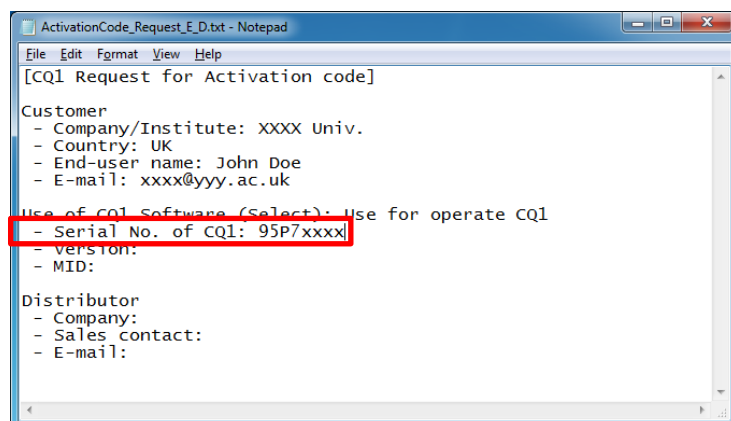


Select use of CQ1 Software (Use for operating CQ1 or Offline use).



Put Serial No. of the CQ1.

(It is also needed in case of Offline use.)

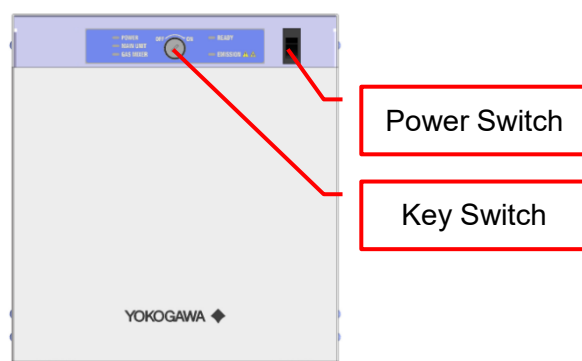


If upgrading the software for operating the CQ1, turn the power switch ON, then turn the key switch ON.

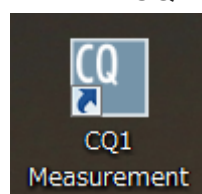


CAUTION

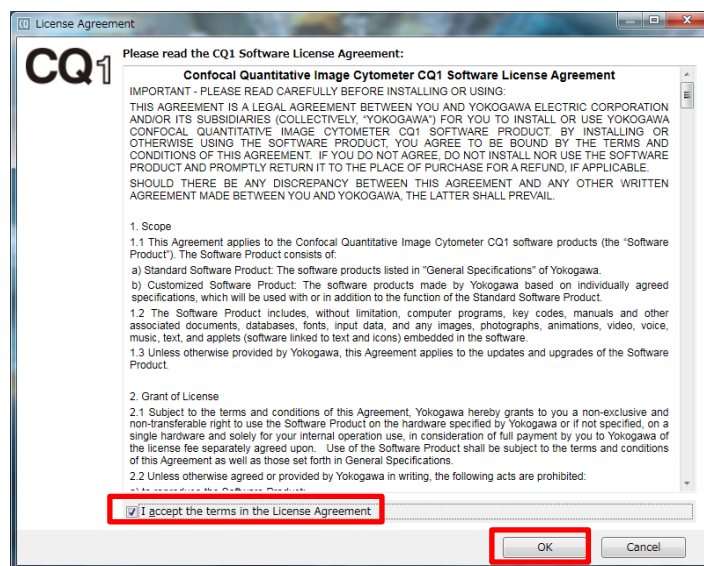
Immediately pull out the AC cord from inlet of equipment, if there is smoke coming out of the main unit, a foul smell, abnormal noises or any other abnormality.



Start the CQ1 Software.

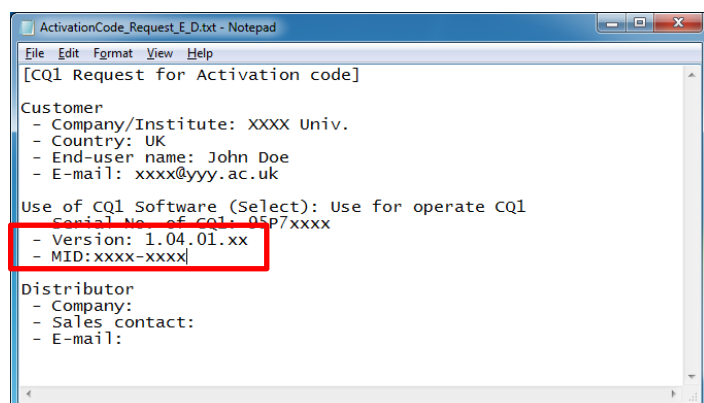
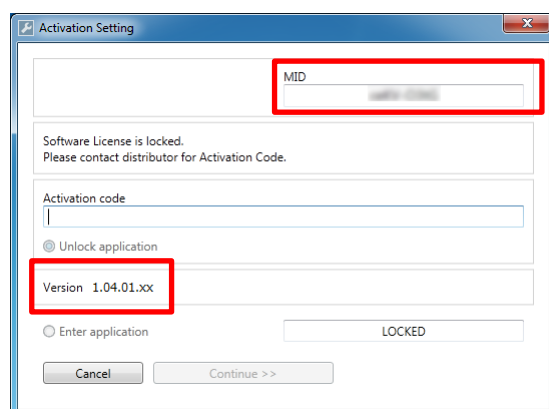


Please read the license agreement, check “I agree the terms in the License Agreement” and click “OK”.



The following window is shown.

Copy “Version” and “MID”.



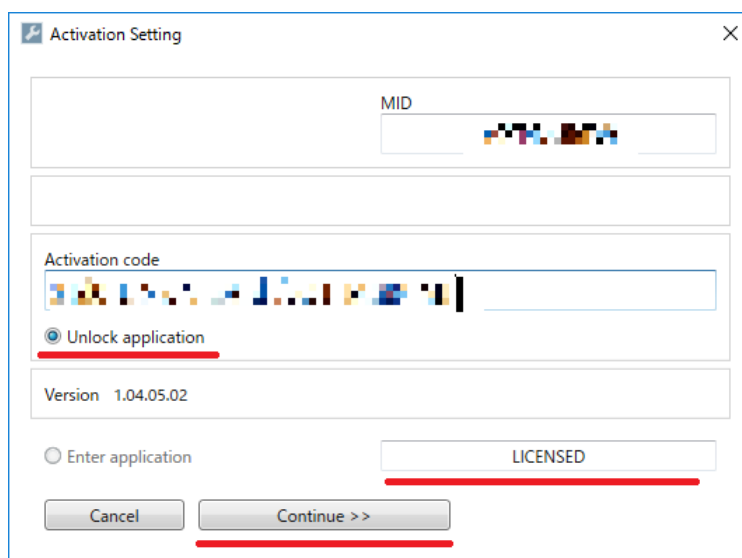
Note

In case of installation on a PC with wireless LAN, activate wireless LAN before this procedure.

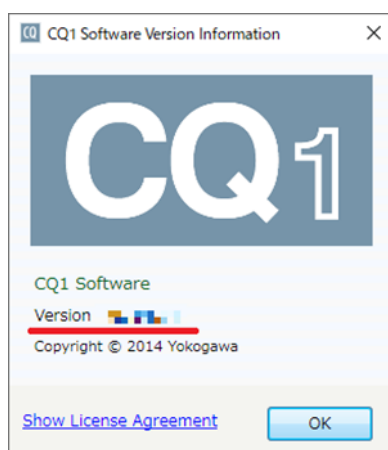
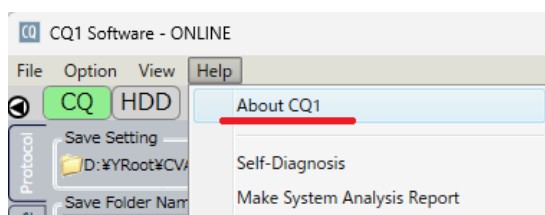
Copy the filled content to E-mail and send to Yokogawa or local dealer.

1.5 Input the activation code

Once you have received the activation code, input the code select “Unlock application” and “LICENSED” then, click Continue.



Select Help→About CQ1 and to find the software version.



Also, if you have the fast time-lapse function, please make sure that the following is displayed.

Fast time-lapse function (20fps)



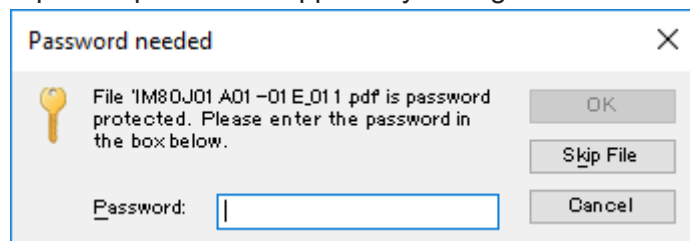
Fast time-lapse function (100fps)







1.6 Unzip the User's Manual

Open unzipped folder -> "6_UserManual.zip" and right click -> Extract All.

Input the password supplied by Yokogawa.



Files such as IM80J01A01-01E_<rev>.pdf are the latest versions of the User's Manuals. For measurement workstations, copy the files to the "CQ1 User's manual" folder on the desktop for use.

-  IM80H01A17-01_<rev>.pdf
-  IM80H01A17-01E_<rev>.pdf
-  IM80J01A01-01_<rev>.pdf
-  IM80J01A01-01E_<rev>.pdf

2. Driver Update Procedure

When upgrading the measurement workstation, please update the drivers with the procedure below. The required drivers vary depending on the workstation model and device configuration. If there are no applicable items, please use the installed drivers.

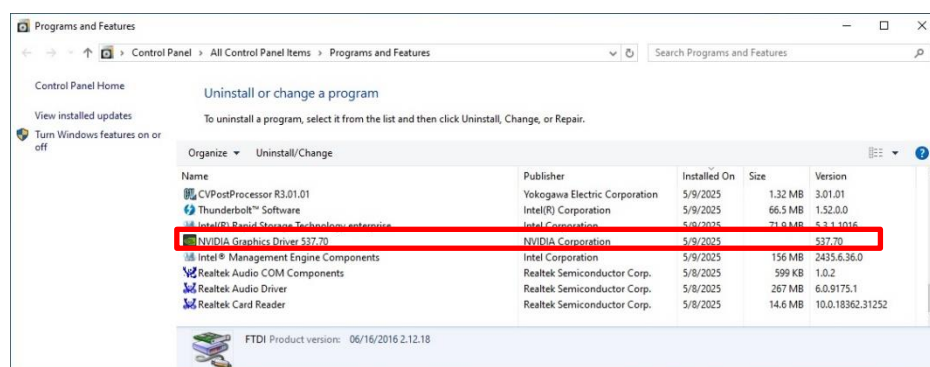
2.1 Confirm the workstation model

Check the model of your workstation by looking at the label on the front of the unit. For example, the Precision 5860 Tower XL has a label that indicates “Precision 5860”.



2.2 Update the graphics card driver

Press the “Windows” + “R” keys, input “appwiz.cpl” in the window that appears, and click the OK button. Check the version of the “NVIDIA Graphics Driver” in “Programs and Features”.



Check the table below to find the version that corresponds to your workstation model. If the installed version is older, download the driver to your desktop from the download link in the table.

Precision 5860	NVIDIA-Quadro-Pxx0-Pxx00-GV1xx-Tx00-Tx000-RTX-x000-RTX_ND46C_WIN_32.0.15.5639_A00.EXE Version: 556.39 https://www.dell.com/support/home/en-us/drivers/driversdetails?driverid=nd46c
Precision 5820	NVIDIA-Quadro-Pxxxx-RTX-xxxx-RTX-Axxxx-Txxxx-Axxx_V21R9_WIN64_31.0.15.3770_A00.EXE Version: 537.70 https://www.dell.com/support/home/en-us/drivers/driversdetails?driverid=v21r9

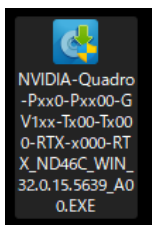


CAUTION

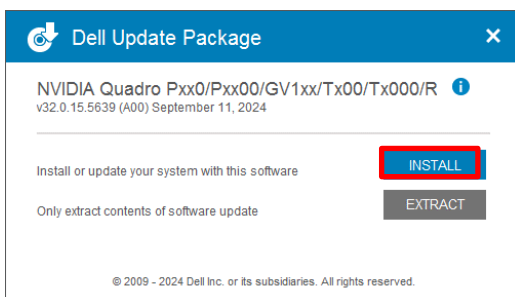
If there is no applicable workstation model, skip the update.

The following descriptions are based on screenshots for NVIDIA RTX A400. Please apply your model as necessary.

Double-click the graphics card driver. If a prompt for higher permissions appears, click “Yes”.

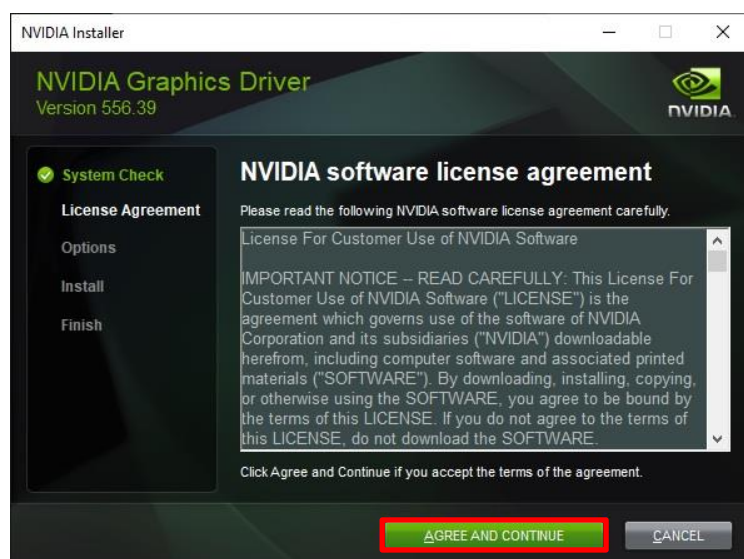


When the following screen is displayed, click “INSTALL”.



On the license confirmation screen, click “AGREE AND CONTINUE”.

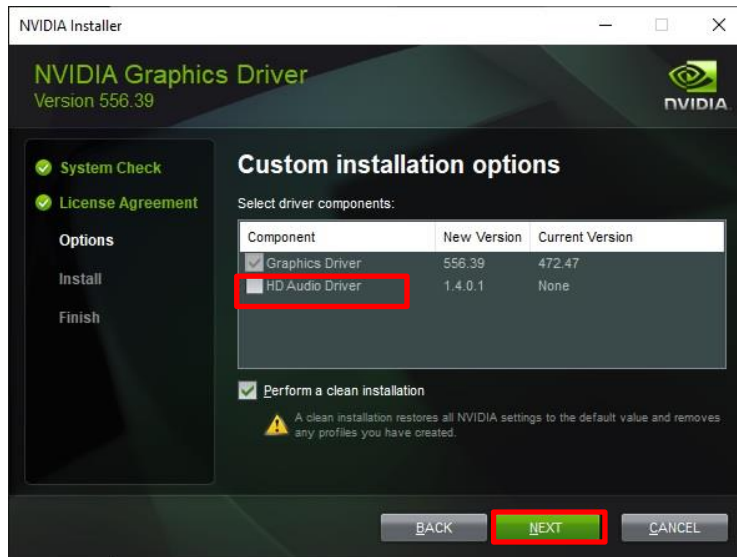
If installation cannot be performed, skip the graphics card driver installation process.



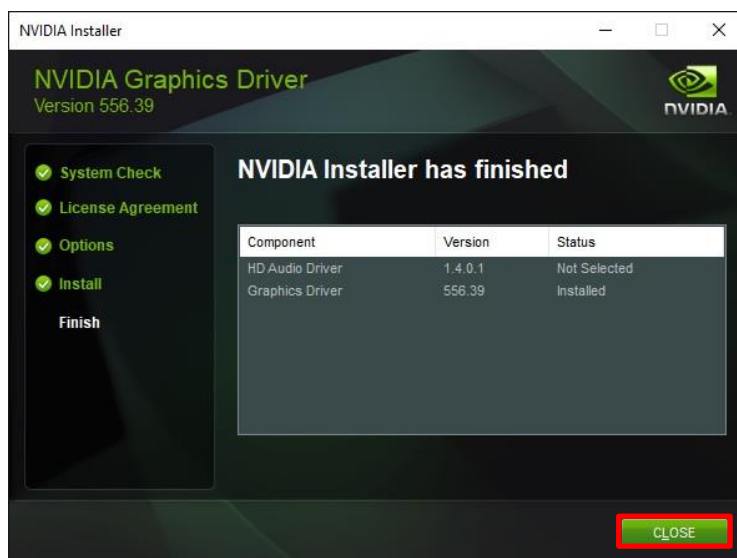
Select “Custom” for the installation options and click “NEXT”.



On the screen for selecting the items to install, deselect all items except “Graphics Driver” (“HD Audio Driver” in the figure below), select “Perform a clean installation”, and click “NEXT”. If there are many items, be sure to scroll down and check all items.



After installation is complete, click “CLOSE”.



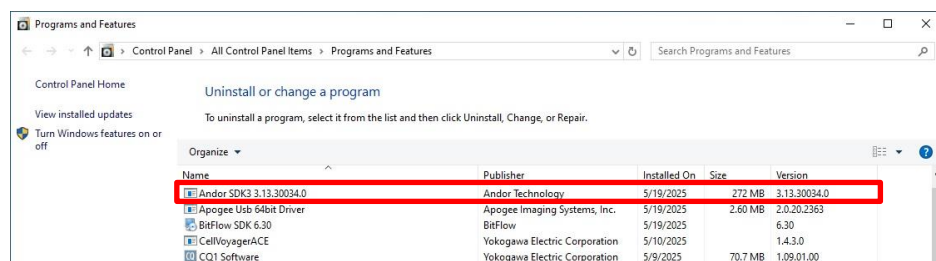
When the following screen is displayed, click “CLOSE” to close the window.



2.3 Update the camera driver (Model A only)

Check the “Different notations for camera models” section in User’s Manual IM 80J01A01-01E included with the main unit, and if the CQ1 camera model is Model A, perform the following.

Press the “Windows” + “R” keys, input “appwiz.cpl” in the window that appears, and click the OK button. Check the version of “Andor SDK” in “Programs and Features.”



Check the table below to find the version that corresponds to your workstation model. If the installed version is older, please contact Yokogawa or your local dealer regarding the camera driver.

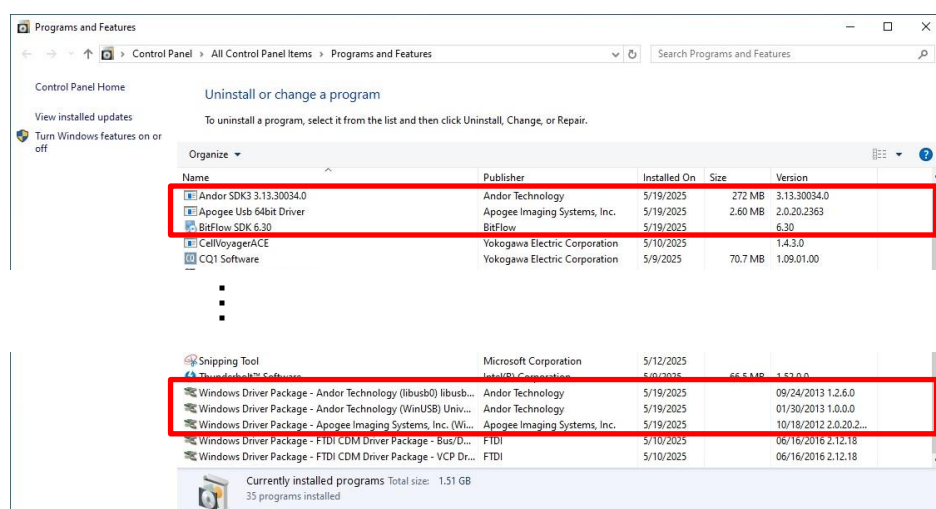
Precision 5860	Version: 3.15.*
Precision 5820	Version: 3.15.*



CAUTION

Perform the following procedure after obtaining the camera driver.

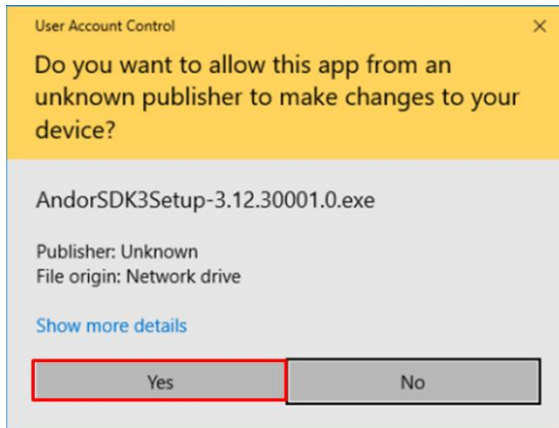
Press the “Windows” + “R” keys, input “appwiz.cpl” in the window that appears, and click the OK button. Uninstall the following software from the displayed “Programs and Features”. If a confirmation dialog appears when uninstalling, click “OK” or “Yes”.



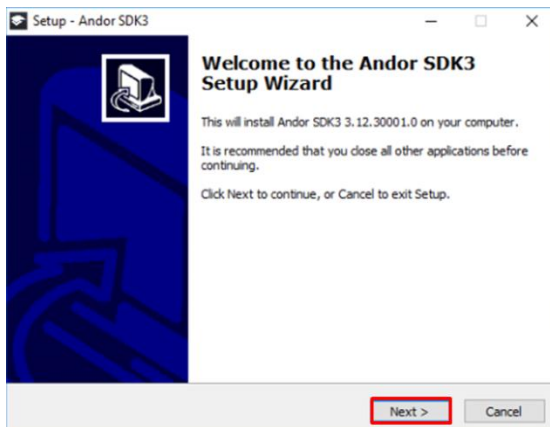
Install the camera driver by following the procedure below.

Launch the corresponding version of “AndorSDK3Setup-*.exe” below.

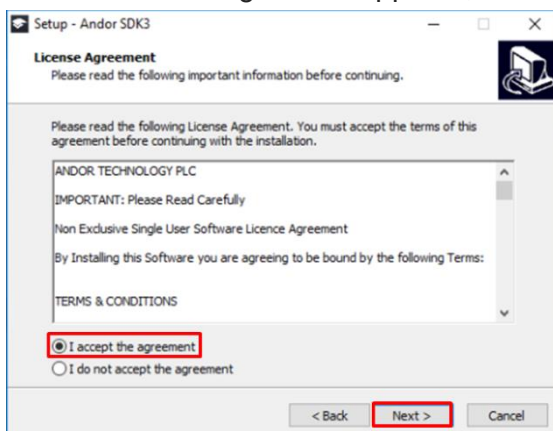
When the following screen appears, click “Yes”.



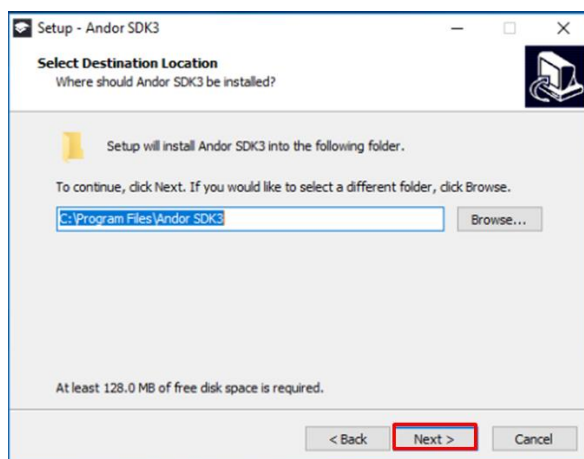
When the following screen appears, click “Next”. Depending on the version of your camera driver, this screen may not appear.



When the following screen appears, select “I accept the agreement” and click “Next”.

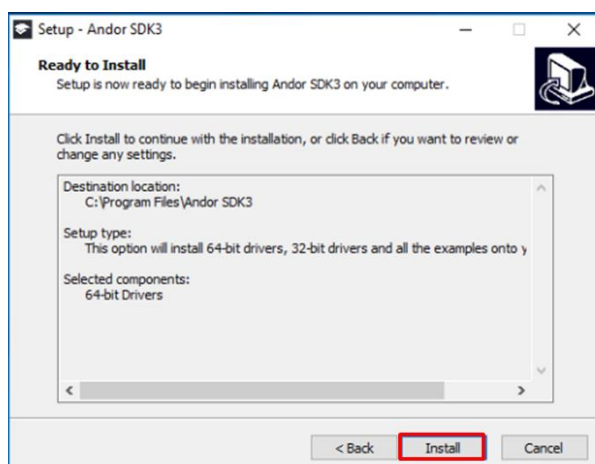


When the following screen is displayed, click “Next”.



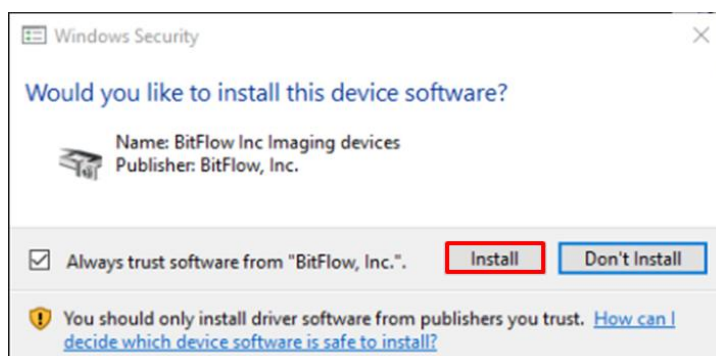
A confirmation screen will appear to proceed with installation. Click “Yes” on the confirmation screen. On the BitFlow installation confirmation screen, select “Yes, install this version” and click “Next”.

When the following screen appears, click “Install”.

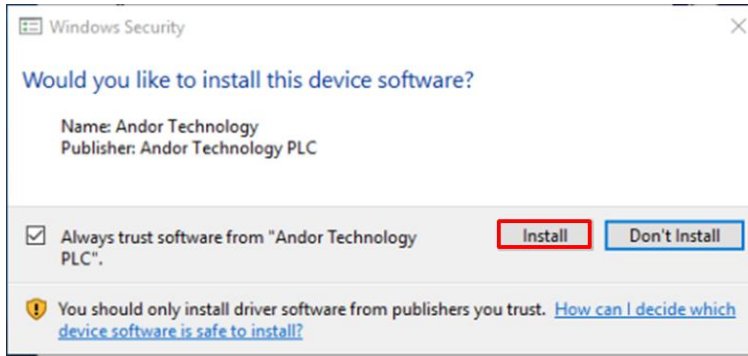


Installation will begin. After installation begins, the following windows may appear. Follow the instructions to proceed with installation.

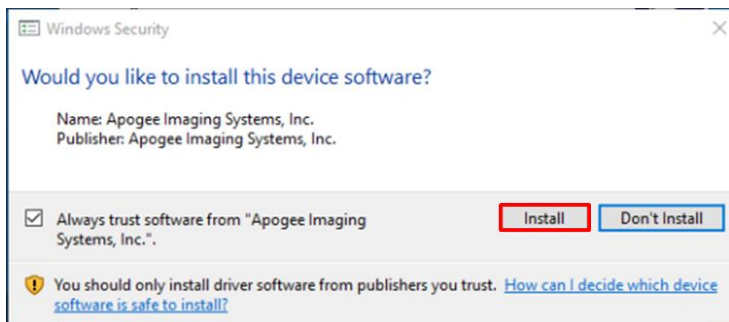
When the following window appears, click “Install”.



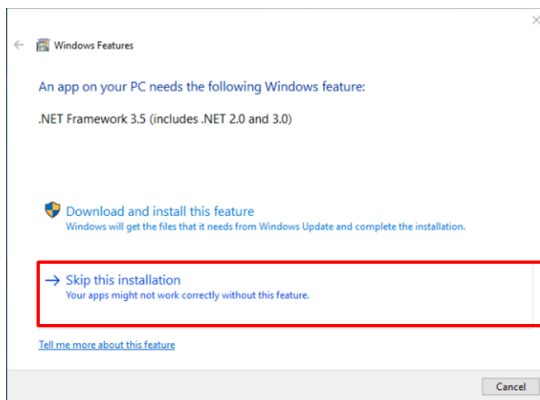
When the following window appears, click “Install”.



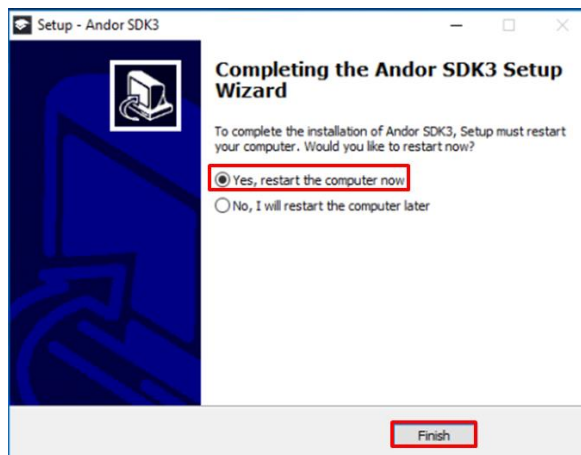
When the following window appears, click “Install”.



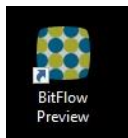
When the following window appears, click “Skip this installation”.



Once the installation is complete, the following window will appear.
Select “Yes, restart the computer now” and click “Finish”.



Delete the “BitFlow Preview” shortcut created on the desktop.



Trademarks

- Microsoft and Windows are registered trademarks or trademarks of Microsoft Corporation in the United States and other countries.
- In this document, registered trademarks or trademarks are not indicated by ™ and ®.