

FieldMate Versatile Device Management Wizard

Notice of Alterations

This notice of alterations amending that must be made to the 18th edition of FieldMate Versatile Device Management Wizard R3.04 (IM 01R01A01-01E).

C Operating Environment

C-3 System Configuration/Connection Examples

The following shows some example hardware setups for operating FieldMate with the pressure transmitter connected. Please refer to the instructions of device for details about other protocols.

BRAIN

Required Components

- BRAIN Pressure Transmitter
- 24 VDC Power Supply
- Load Register (250 Ω)
- USB FieldMate Modem

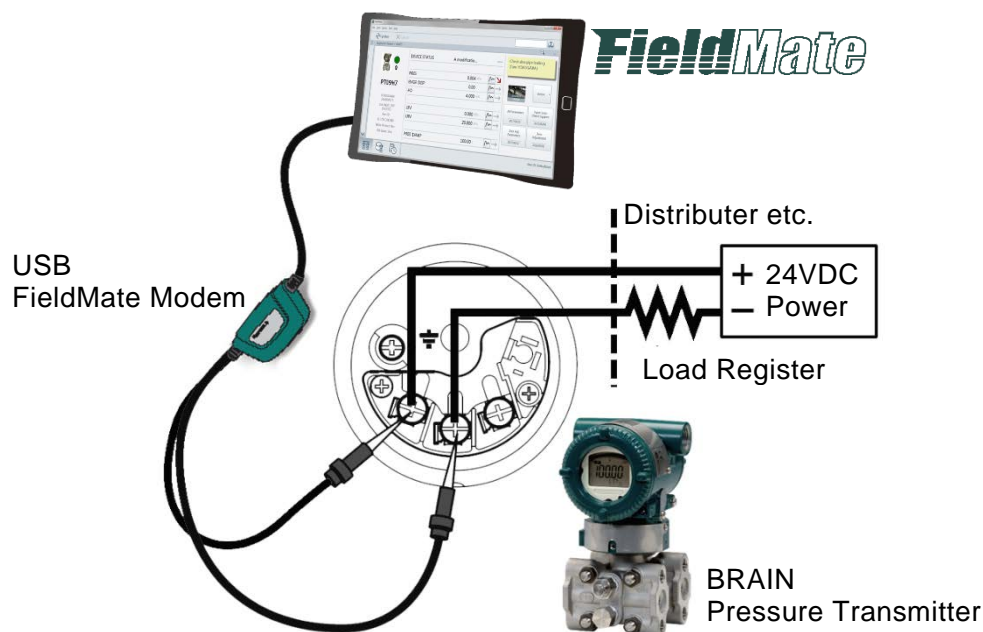


Figure C-3-1 BRAIN Hardware Setup Sample

HART

Required Components

- HART Pressure Transmitter
- 24 VDC Power Supply
- Load Register (250 Ω)
- USB FieldMate Modem

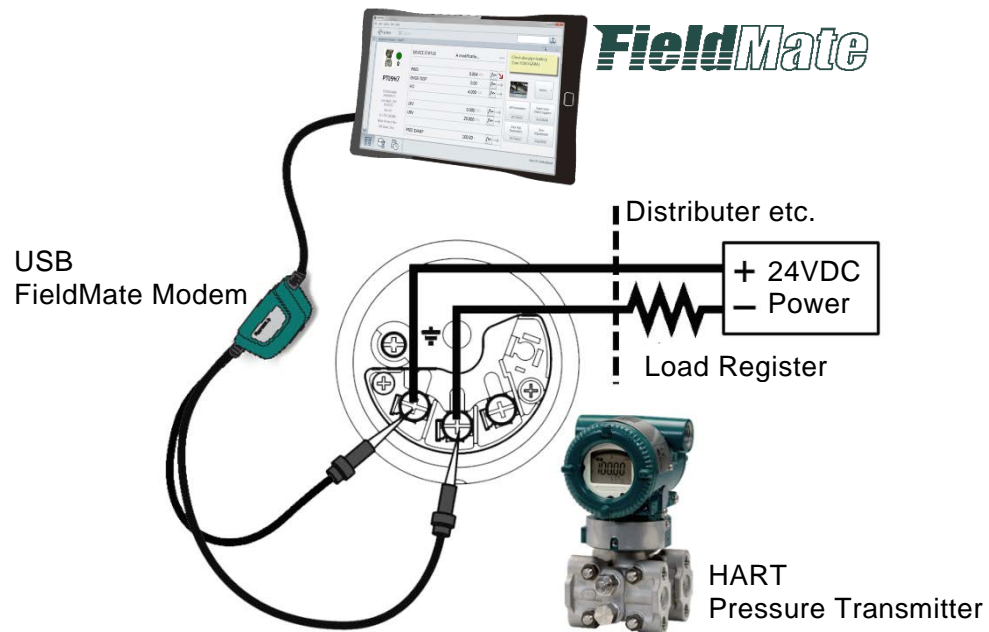


Figure C-3-2 HART Hardware Setup Sample

HART

Required Components

- HART Pressure Transmitter
- 24 VDC Power Supply
- Load Register (250 Ω)
- VIATOR Bluetooth Interface

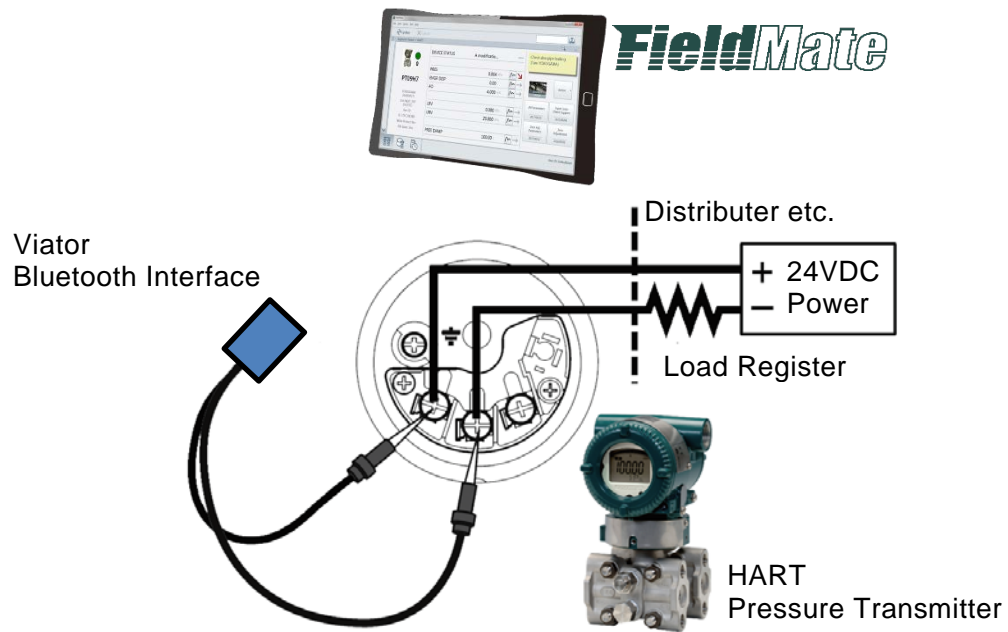


Figure C-3-3 HART Hardware Setup Sample

G Window Layout and Main Windows Menu

G-2 Main Window Menu

The following table describes the menu options in the menu bar. Note that the availability of the menu options may vary depending on the main window displayed and the communication protocol of the device.

Table G-2-1 Main Window Menu Options

Menu Option		Explanation
File	Import Device Maintenance Info	Imports device maintenance information from external files
	Export Device Maintenance Info	Exports device maintenance information to external files
	Export History	Exports history to external files
	Export Serial No.	Exports device serial number registered in device maintenance information to external files
	Exit	Enables the logged on user to exit FieldMate
View	Update	Updates contents displayed in the windows
	Init Current View Format	Initializes the alignment of parameter items on ISA100 (Gateway) and HART (Adapter) in Segment Viewer
	Clear Current View	Clears the device of ISA100 (Gateway) and HART (Adapter) in Segment Viewer
	Tool bar	Show/Hide menu contents
Action	Open History Info	Show the detail information of History
	Open Device Maintenance Info	Starts the device maintenance info window
	Assigned DTM	Starts the DTM assigned to the device in the DTM Works window
	Select DTM	Displays the Device DTM Selection dialog box and starts the selected device DTM in the DTM Works window
	Parameter Manager	Starts Parameter Manager Window
	Device Viewer	Starts the Device Viewer Window
	DD Menu	Starts the DD Menu Window
	Trend Graph Viewer	Starts the Trend Graph Viewer
	Tag/Address Assignment	Starts the Device Tag/Address Assignment Window - Sets device tag/address
	Device Class Setting	Starts the Device Class Assignment Window - Sets Device Class (Link Master or Basic)
	Function Block Execution Setting	Performs Function Block Execution/Wiring for FOUNDATION fieldbus H1 Device
	Reset Provisioning	Resets the Initialization Provisioning
	New Device Maintenance Info	Enables you to create device maintenance information
	Delete Device Maintenance Info	Deletes device maintenance information
	Compare and Generate Parameter Report	Starts the Parameter Comparison window
	Pressure Calibration Support	Starts the Pressure Calibration Support function
	Export Device Maintenance Info	Exports device maintenance information to external files
	Flag the Device	ON

Menu Option		Explanation		
Action	OFF	Changes device flag to OFF		
	Add to Favorites	Create New Favorite	Creates new favorites - Up to 30 favorites can be defined	
		Favorites List	Adds selected device to Favorites	
	Delete from Favorites		Deletes selected device from Favorites	
	Install DD File		Adds DD files of device	
	Device Icon Setting		Sets Device Icon to Selected File or switches back to the default setting	
Tool	User Manager		Starts the User Management window - Manages FieldMate User Account	
	Communication Setting	HART Modem Configuration	Starts the HART Modem Configuration window - Sets HART Modem	
		FOUNDATION fieldbus Interface Configuration	Calls NI-FBUS Interface Configuration Utility or Softing FFusb Configuration Tool	
		PROFIBUS Interface Configuration	Starts the PROFIBUS Communication Configuration window - Sets PROFIBUS	
		BRAIN Modem Configuration	Starts the BRAIN Modem Configuration window - Sets BRAIN Modem	
		ISA100 (Infrared) Interface Configuration	Enables configuration of USB Port	
		ISA100 (Gateway) Interface Configuration	Sets Host Name or IP Address of Gateway	
		Modbus Interface Configuration	Starts the Modbus Communication Configuration window - Sets Modbus	
		HART (YOKOGAWA N-IO) Interface Configuration	Starts HART (YOKOGAWA N-IO) setting dialog	
		SENCOM communication Interface Configuration	Starts SENCOM Communication setting dialog	
	Device Files Setup	Start DTM Setup	Starts DTM Setup tool Refer to "R-3 DTM Setup" about DTM Setup tool	
		DD File Utilities	Starts DD File Utilities dialog Refer to "R-1-1 DD file" about DD file Utilities dialog	
	Options	Display Parameters on Segment Viewer	Show/Hide Typical Parameters on Segment Viewer	
		Typical Parameters Customization	Specify the parameters to be displayed on the Typical Parameter HMI of the Segment Viewer	
		DTM/Parameter Manager Startup path from Device Maintenance Info	Select Path to DTM and Parameter Manager Setup from Device Maintenance Info	
		ISA100 Provisioning Setting	Select Usage Advisability for Provisioning Information File	
	FDT Project		Creates, copies, and deletes FDT Project, and imports FDT Project from external files Exports FDT Project to external files and opens specified FDT Project	
	Help	User Registration		Starts the User Registration window - Carries out user registration processes
		About FieldMate		Starts the About FieldMate window – Displays details such as version information

J Device Navigator

J-1 Device Navigator Window

■ Menu

Table J-1-1 Device Navigator Menu List

Menu Option		Explanation	
File	Import Device Maintenance Info	Imports device maintenance information from external files	
	Export Device Maintenance Info	Exports device maintenance information to external files	
	Export Serial No.	Exports device serial number registered in device maintenance information to external files	
	Exit	Enables the logged on user to exit FieldMate	
View	Update	Updates contents displayed in the windows	
	Tool bar Menu bar	Show/Hide menu bar	
Action	Open Device Maintenance Info	Starts the device maintenance info window	
	Assigned DTM	Starts the DTM assigned to the device in the DTM Works window	
	Select DTM	Displays the Device DTM Selection dialog box and starts the selected device DTM in the DTM Works window	
	Parameter Manager	Starts Parameter Manager Window	
	Trend Graph Viewer	Starts the Trend Graph Viewer	
	New Device Maintenance Info	Enables you to create device maintenance information	
	Delete Device Maintenance Info	Deletes device maintenance information	
	Export Device Maintenance Info	Exports device maintenance information to external files	
	Compare and Generate Parameter Report	Starts the Parameter Comparison window	
	Flag the Device	ON	Changes device flag to ON
		OFF	Changes device flag to OFF
	Add to Favorites	Create New Favorite	Creates new favorites - Up to 30 favorites can be defined
		Favorites List	Adds selected device to Favorites
	Delete from Favorites	Deletes selected device from Favorites	
	Install DD File	Adds DD files of device	
	Device Icon Setting	Sets Device Icon to Selected File or switches back to the default setting	
Tool	User Manager	Starts the User Management window - Manages FieldMate User Account	
	Communication Setting	HART Modem Configuration	Starts the HART Modem Configuration window - Sets HART Modem
		FOUNDATION fieldbus Interface Configuration	Calls NI-FBUS Interface Configuration Utility or Softing FFusb Configuration Tool
		PROFIBUS Interface Configuration	Starts the PROFIBUS Communication Configuration window - Sets PROFIBUS
		BRAIN Modem Configuration	Starts the BRAIN Modem Configuration window - Sets BRAIN Modem
		ISA100 (Infrared) Interface Configuration	Enables configuration of USB Port
		ISA100 (Gateway) Interface Configuration	Sets Host Name or IP Address of Gateway

Menu Option		Explanation	
Tool	Communication Setting	Modbus Interface Configuration	Starts the Modbus Communication Configuration window - Sets Modbus
		HART (YOKOGAWA N-IO) Interface Configuration	Starts HART (YOKOGAWA N-IO) setting dialog
		SENCOM communication Interface Configuration	Starts SENCOM Communication setting dialog
	Device Files Setup	Start DTM Setup	Starts DTM Setup tool Refer to "R-3 DTM Setup" about DTM Setup tool
		DD File Utilities	Starts DD File Utilities dialog Refer to "R-1-1 DD file" about DD file Utilities dialog
	Options	Display Parameters on Segment Viewer	Show/Hide Typical Parameters on Segment Viewer
		Typical Parameters Customization	Specify the parameters to be displayed on the Typical Parameter HMI of the Segment Viewer
		DTM/Parameter Manager Startup path from Device Maintenance Info	Select Path to DTM and Parameter Manager Setup from Device Maintenance Info
		ISA100 Provisioning Setting	Select Usage Advisability for Provisioning Information File
	FDT Project		Creates, copies, and deletes FDT Project, and imports FDT Project from external files
Help	User Registration	Starts the User Registration window - Carries out user registration processes	
	About FieldMate	Starts the About FieldMate window – Displays details such as version information	

R Adding/Deleting Device Files

R-1 Installation of DD file and Setting Device Icon

R-1-1 DD File

■ DD File Utilities

For HART, Foundation fieldbus H1, ISA100 devices, DD file corresponding to the device is required to check the setting and device status.

With the DD File Utilities, the DD file already installed in FieldMate can be confirmed, and the separately obtained DD file can be installed to FieldMate.

● Startup

Select [Device Files Setup] - [DD File Utilities] from the [Tool] menu of Segment Viewer or Device Navigator. And then the DD File Utilities dialog appears.

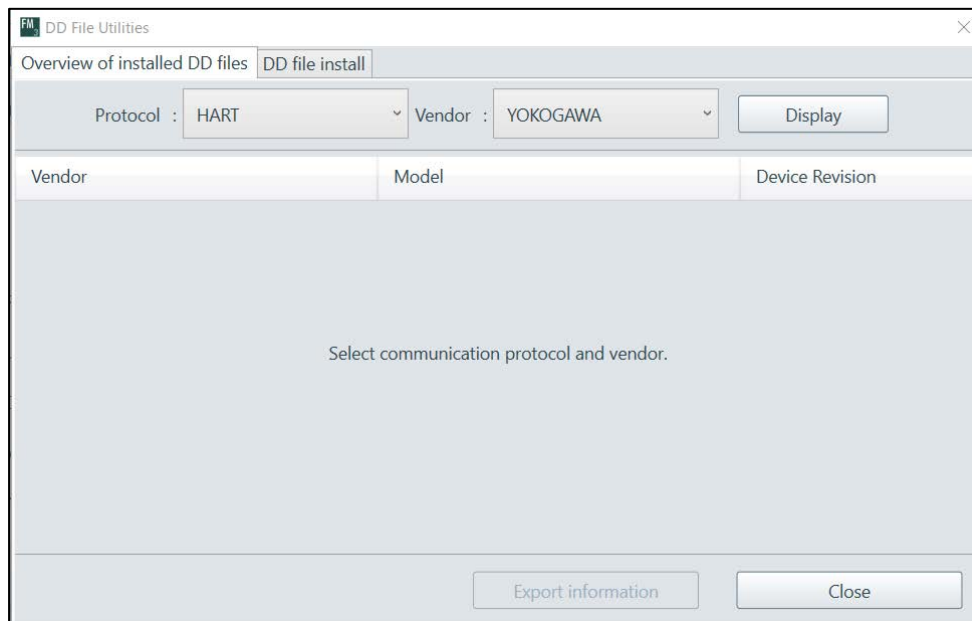


Figure DD File Utilities dialog

● Confirmation the installed DD files

In the [Overview of installed DD files] tab on the DD File Utilities dialog, the list of devices on which the DD file is currently installed in FieldMate is displayed.

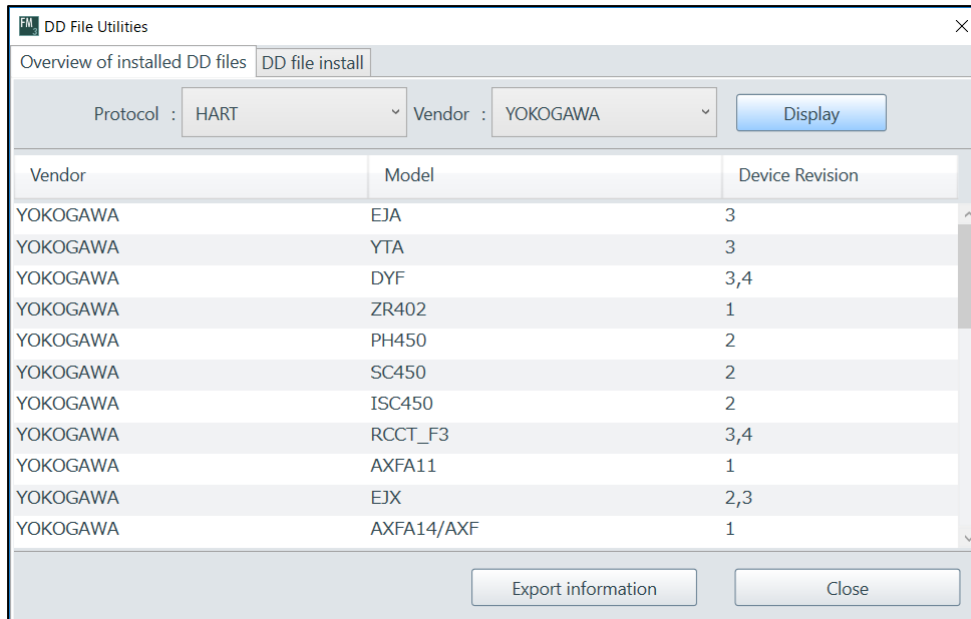


Figure The list of devices on which the DD file is currently installed

● Install DD file

In the [DD file install] tab on the DD File Utilities dialog, the separately obtained DD file can be installed in FieldMate.

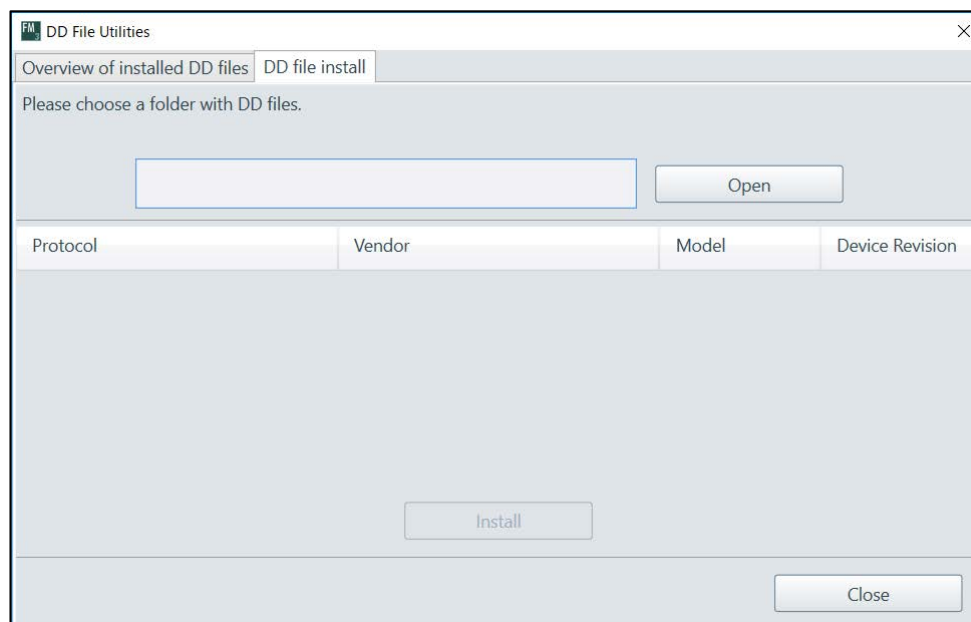


Figure Installing DD file

■ Install DD files in the field

If the required DD file can not be installed before field work, field engineer can perform the installation work of the DD file prepared in advance when connecting to the device at the field.

● Startup

Select a device in Segment Viewer or Device Navigator and start the setup from the Installation of DD file. The following dialog box appears.

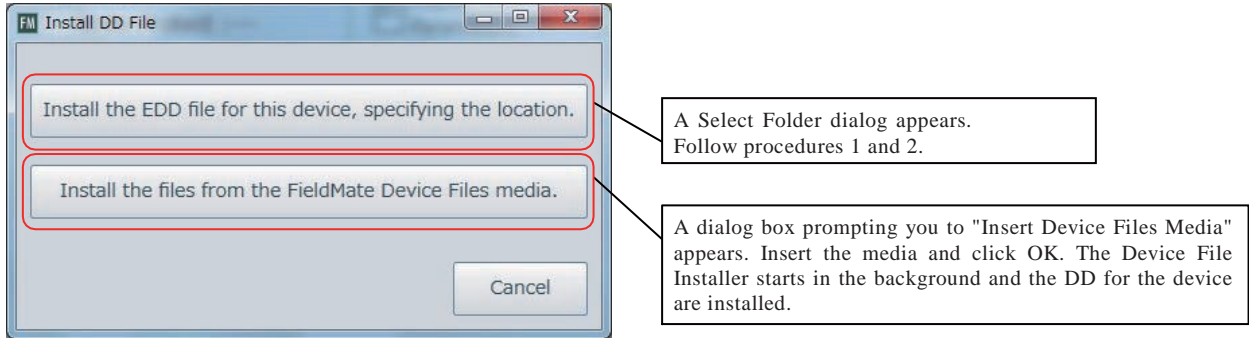


Figure R-1-1 DD File

1. Select the folder containing the DD file that you wish to install in the Select Folder dialog and click OK. (Obtain DD file(s) that you wish to download from the web site of Fieldbus FOUNDATION, etc.)

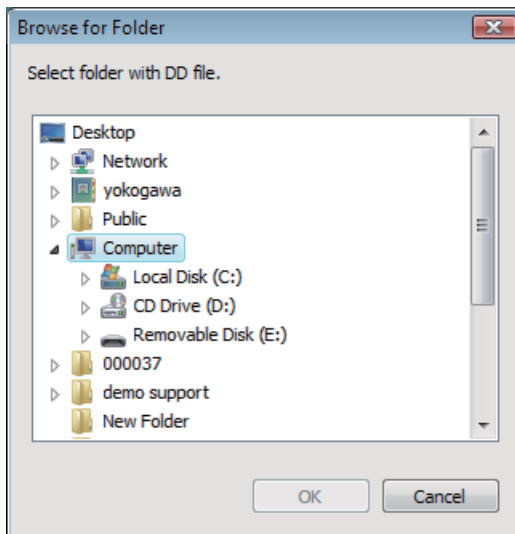


Figure R-1-2

If the file you wish to install is found in the selected folder, go to step 2.

- A file with a different device revision must not be selected as the target for installation.
- If a selected folder name (device type) is different from the device type to be installed, a confirmation check is made.

E.g., “DD file which you selected may not match for target device type. Are you sure to want to continue this operation?”

2. Check the information in the Confirmation dialog.

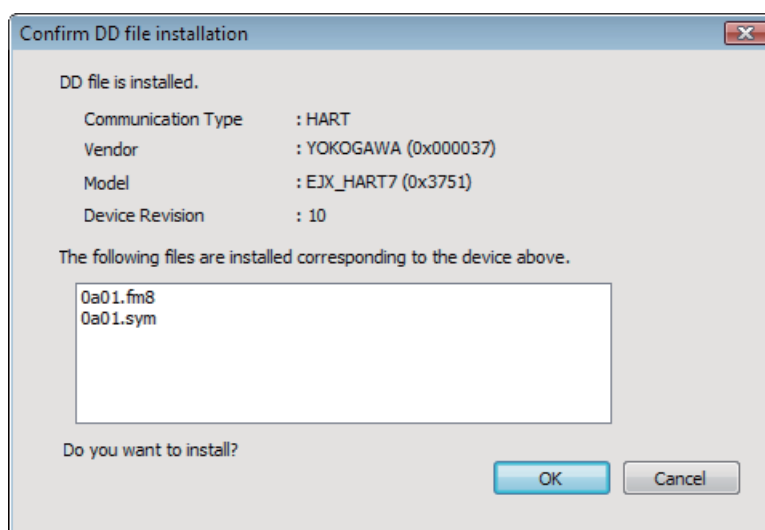


Figure R-1-3

T BT200 Tablet

T-1 Overview

FieldMate has the device configuration tool like BT200 BRAIN TERMINAL provided from Yokogawa Electric Corporation. This tool, BT200 Tablet, can be configured field devices like a operation with BT200.

Also, by using “Dedicated adapter” included in “Model VJ77 PC-based Parameters Setting Tool”, Signal Conditioner Card / Nest of CENTUM can be configured and adjusted.

The information on the device connected with the BT200 Tablet function is automatically stored in FieldMate database (Device Maintenance Information).

Also, the parameter information of the device acquired with the “All Parameter Read” function is stored in “Parameters” of FieldMate Device Maintenance Information, and output in arbitrary format and comparison as same as “All Parameter” function of FieldMate.



NOTE

Please contact Yokogawa Electric Sales Representative about "Dedicated adapter" for VJ77.



NOTE

The information on Signal Conditioner Card is NOT stored in FieldMate database (Device Maintenance Information).

SEE

ALSO "T-3-2 Read All parameters" about "All Parameter Read" function.

SEE

ALSO "H-2-3 All Parameters/Adjustment Parameters" about "All Parameter" function.



NOTE

BT200 Tablet Supports only field devices and Signal Conditional Card / Nest. Use JHT200 for the configuration of Yokogawa panel instruments (JUXTA, YS series).

T-2-3 Operation

The basic operation of BT200 Tablet is as follows.

■ Connection to device or Signal Conditioner Card / Nest

Connect FieldMate to device or Signal Conditioner Card for CENTUM.

● Connect to device

Refer to “C-3 System Configuration/Connection Examples”.

● Connect to Signal Conditioner Card / Nest

To connect to Signal Conditioner Card, use a dedicated connector for BT200 BRAIN TERMINAL connection that is provided on ESC Card of Signal Conditioner Nest or Extension Card (Model: EXT) with “Dedicated Adapter (5-pin connector)” included in “Model VJ77 PC-based Parameters Setting Tool”.

SEE ALSO See BT200 BRAIN TERMINAL (IM 01C00A11-01E) for connection with of Signal Conditioner Nest ESC (Signal Conditioner communication card) and Extension Card (Model: EXT).

■ Select the COM port number for Modem and connect device

BT200 Tablet is started and then the Start panel appears.

Select “USB FieldMate Modem” for connecting BRAIN device. Also, select “VJ77 Modem” for connecting Signal Conditioner Card / Nest.

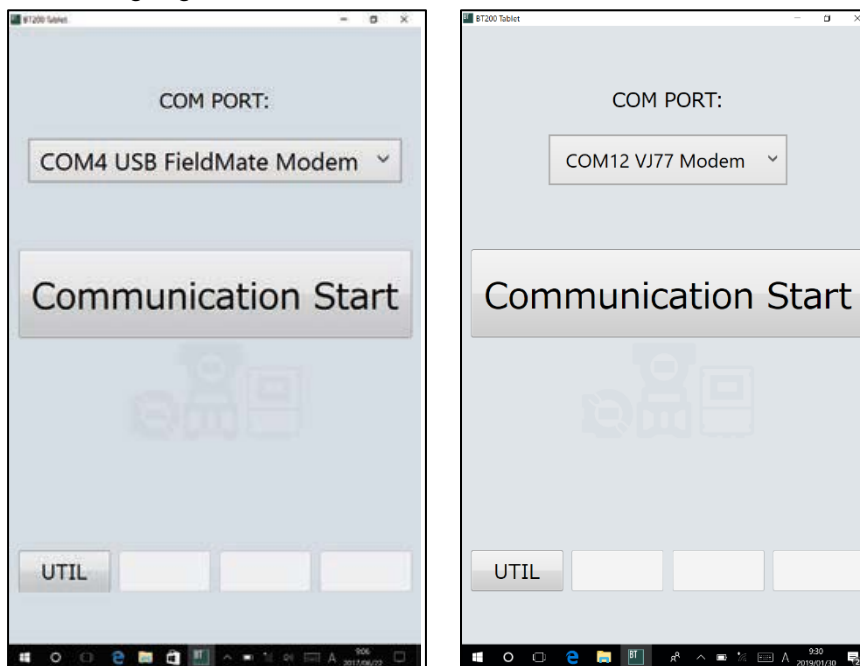


Figure T-2-3 Start panel

After selecting the COM port number connected the modem, click “Communication” button and then BT200 tablet tries to connect to device. If connecting to device, Initial Data panel appears.



Figure T-2-4 Initial Data panel

Confirm the model and Tag No. connected the device.
Click “OK” button and then Menu panel appears.

- **Connect to Signal Conditioner Card / Nest**

In the case of connecting to Signal Conditioner Card directly with the extension card (Model: EXT), Initial Data panel appears.

In the case of connecting to the Signal Conditioner Nest, Slot panel appears. Enter the Slot No. of Signal Conditioner Card and press the [ENTER] button, Initial Data panel appears.

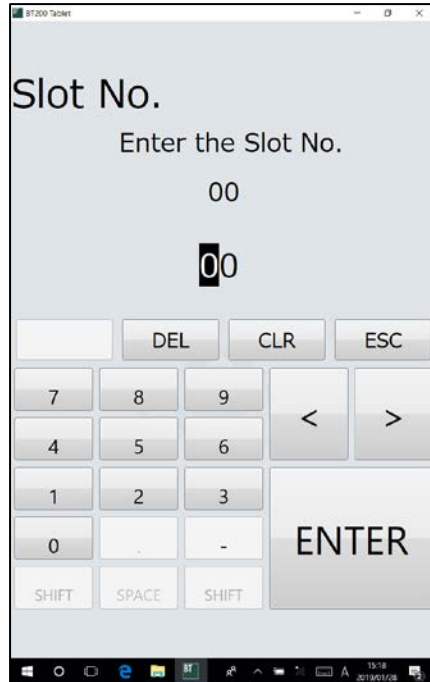


Figure Slot panel
