



Virtual Training for Field Work

Realistic 3D plant and asset simulator for field work

Bridging Innovation for Field Work Training

Virtual Field Training represents the next-generation 3D solution enabling training by simulating the customer's plant in a virtual space.

An immersive training system interlinked with virtual reality (VR) that solves your on-site training challenges. By initiating targeted tasks in a virtual space without physical constraints, as well as unlimited trials to enhance your expertise.

Field training up to now...

Manufacturing Department

Training affected by weather and on-site conditions, as well as the schedule of parties involved.

Manufacturing Department

A lack of experience in serious incidents generates concerns over the ability to respond to actual emergencies.

Maintenance Department

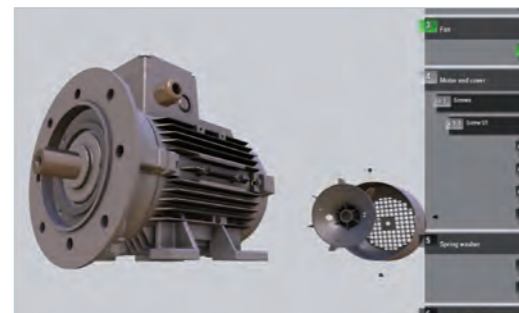
A lack of training in advance and unfamiliarity of equipment causes inefficiency and prolongs actual turnaround inspections.

HR Department

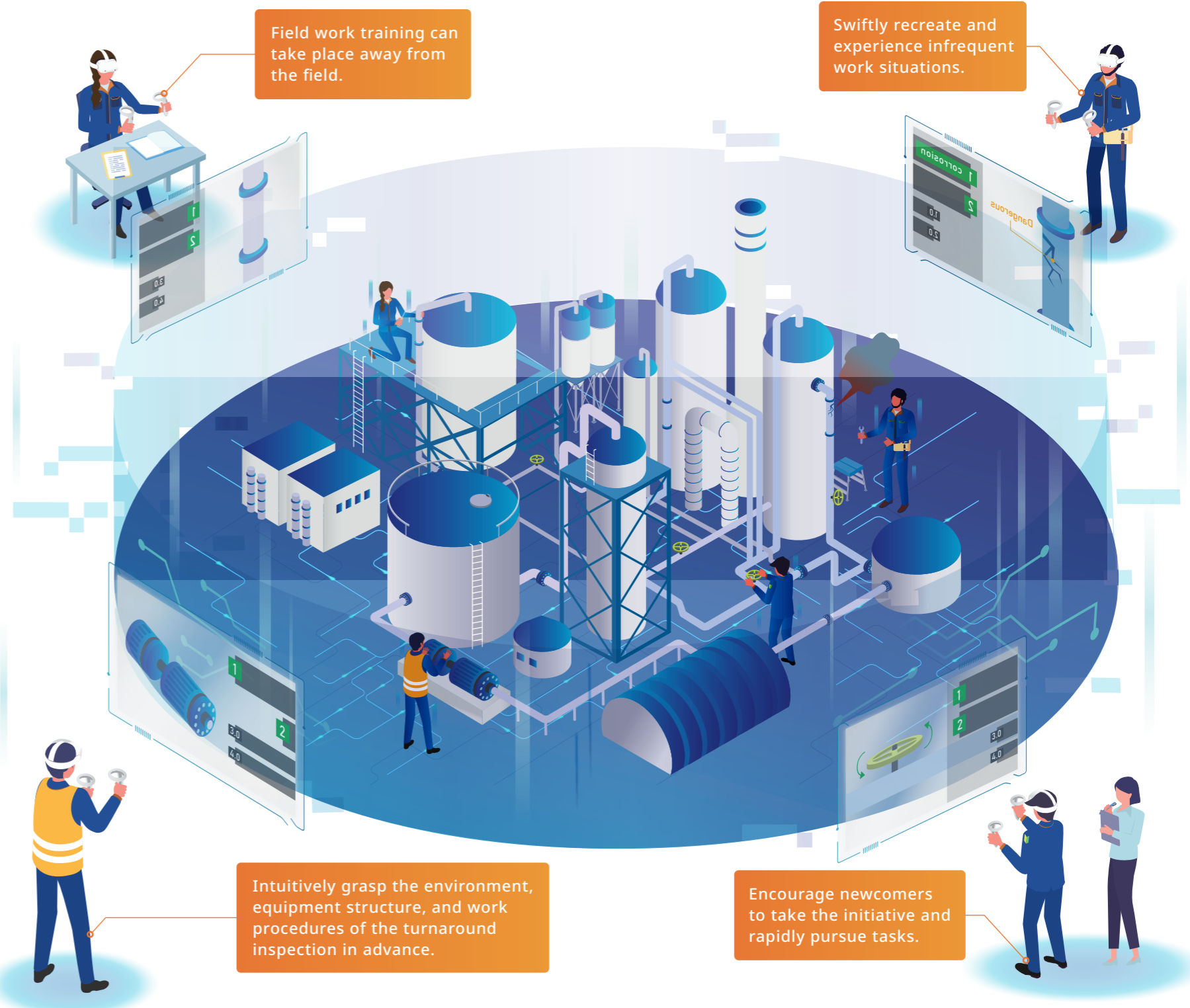
A mainly passive curriculum with participant motivation decreasing each year.



Virtual space with a sense of realism

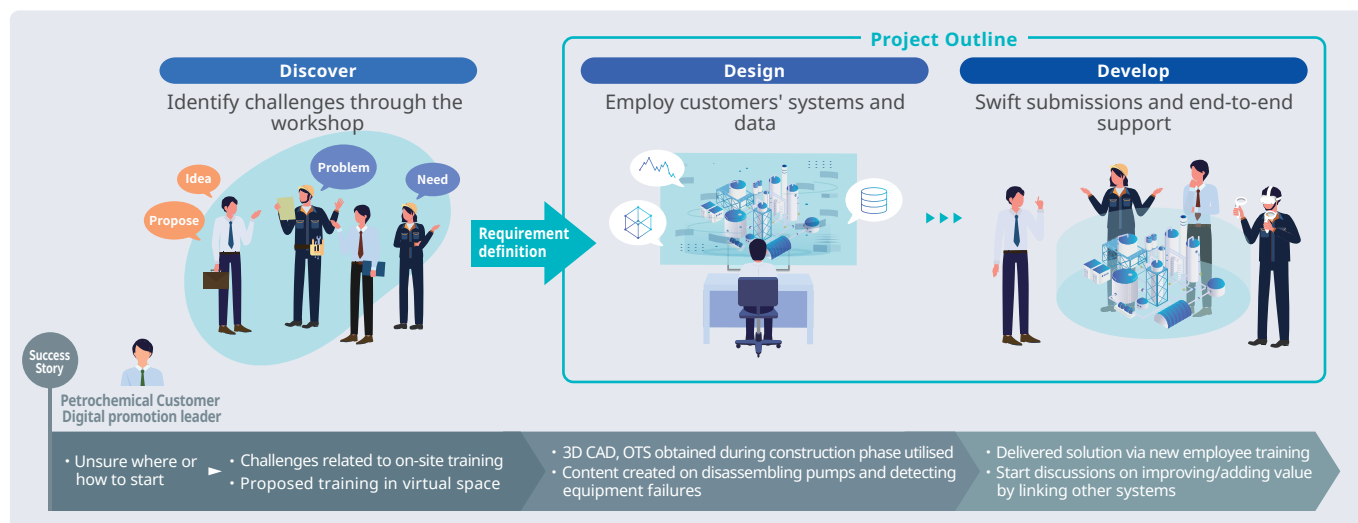


Intuitive procedure review function

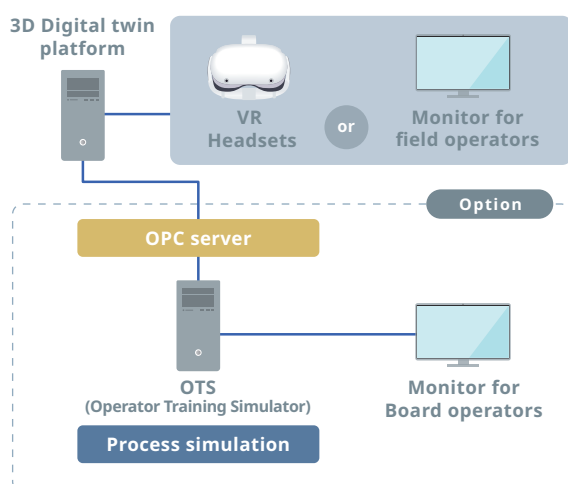


Flow of consulting and project execution

Yokogawa's consulting team, equipped with Operational technology (OT), 3D and/or VR technology, as well as industry knowledge of plant operations, proposes training content that reflect the customer's current situation and goals.



System configuration example



Frequently asked questions



Are VR trainings effective?

Yes, a study* showed a 20% increment in procedure speed and a 38% increment in the number of successfully completed procedures compared with traditional training methods.

* Gideon, Blumstein, "Research: How Virtual Reality Can Help Train Surgeons", Harvard Business Review, 2019



What is an example of an integrated system?

Linkage with OTS is recommended, as it allows field operators to understand process variations and practice working alongside board operators in a safe manner.



What happens to the original 3D model?

We utilise existing plant 3D CAD data. We can also use photogrammetric modelling if 3D CAD data is unavailable.

YOKOGAWA will actively support your Smart manufacturing initiatives

Yokogawa co-innovates with customers on their Smart manufacturing journey toward sustainable, smart, and autonomous operations and a prosperous society of the future. To promote Smart manufacturing along our customers' entire supply chain and plant lifecycle, we provide solutions that utilise the latest technologies, such as AI, as well as our accumulated industry knowledge and experience.



Yokogawa Electric Corporation Digital Solutions HQ

2-9-32 Nakacho, Musashino-shi, Tokyo, 180-8750 Japan
TEL: 0422-52-3282 FAX: 0422-52-5754

The names of corporations, organizations, products, services and logos herein are either registered trademarks or trademarks of Yokogawa Electric Corporation or their respective holders.

Subject to change without notice.

All Rights Reserved, Copyright ©2021, Yokogawa Electric Corporation

[Ed : 02/d] Printed in Japan, 307 (VC)

Web site:

www.yokogawa.com/smart-manufacturing/



Represented by: