



Modular Mounting System, C13SM Series

For DPharp EJX & EJA-E Differential Pressure and Pressure Transmitters



Introduction

The partnership of Yokogawa and AS-Schneider creates a real added value to our customers.

Yokogawa Electric Corporation with its headquarters in Japan is one of the World's Leading Manufacturers and Engineering Service Provider in the fields of Automation, Measurement and Control.

The AS-Schneider Group with its headquarters in Germany is one of the World's Leading Manufacturers of Instrumentation Valves and Manifolds. AS-Schneider offers a large variety of Valves and Manifolds as well as numerous accessories needed for the instrumentation installations globally.

The C13SM Series Manifolds and the corresponding C13SA Series Accessories provide substantial advantages by the simplest and most effective means to install Yokogawa's DPharp EJX Series and EJA Series Transmitters for Differential Pressure, Gauge and Absolute Pressure Applications. The C13SM/C13SA Series are designed to be compatible with the Shell® MESC Specifications for Process Instrumentation.

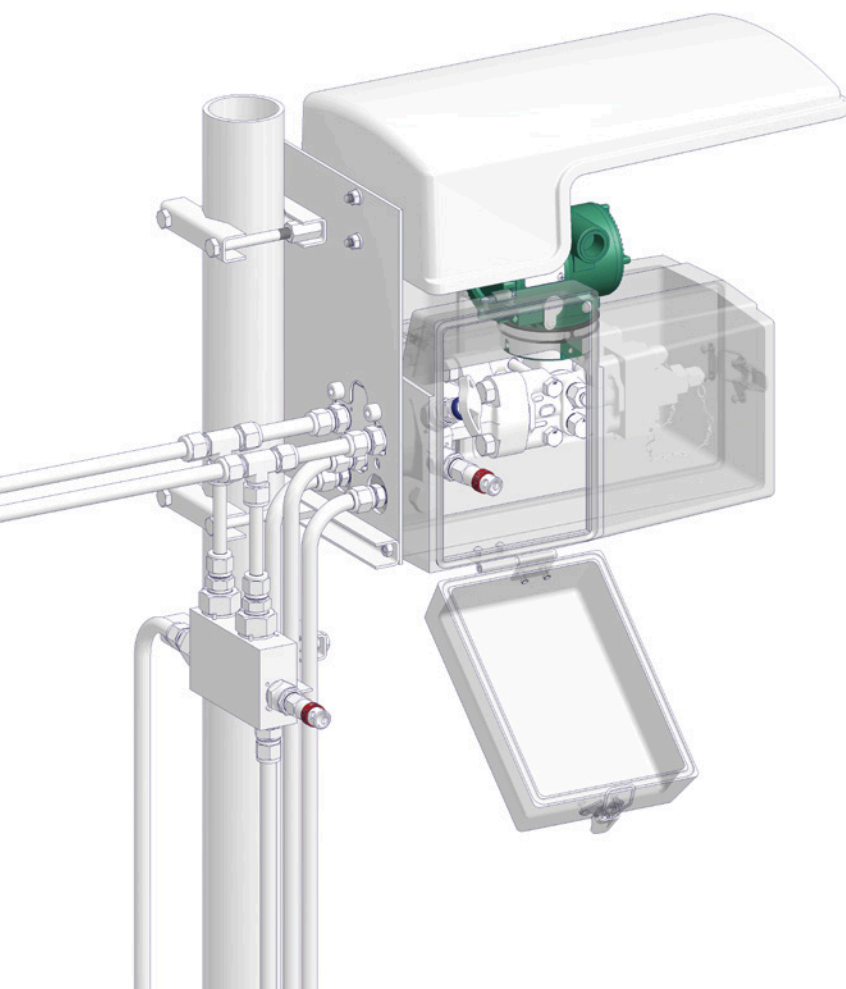
The C13SM/C13SA Components are designed to be used with Transmitters or Gauges for General Differential Pressure and Pressure Measurements.

All components benefit from a compact design, reduced installation costs and less potential leak points.

Selection can be made from a comprehensive range of bodies with a variety of connections and material options, optimizing installation and access opportunities.

Continuous product development may from time to time necessitate changes in the details contained in this catalogue. AS-Schneider and Yokogawa reserve the right to make such changes at their discretion and without prior notice.

All dimensions shown in this catalogue are approximate and subject to change.



The C13SM Series Manifolds are provided with a choice of C13SA Series Accessories:

- Mounting Plates
- Single and Double Vent Purge Blocks
- Seal Pots
- Steam & Electrical Heaters
- Filling Connectors
- Blind Flanges
- Port Protectors
- Protective Shades and Enclosures
- Anti-Tamper Keys

General Features & Pressure-Temperature Ratings

Body Material Options

Material Group	AS Material Designation	Material No.	Short Name	Equivalent UNS-No.	Material Grade	
					acc. to ASTM	acc. to JIS
Austenitic Stainless Steel	316 quadruple certified*	1.4401	X5CrNiMo17-12-2	S31600	316	SUS316
		1.4404	X2CrNiMo17-12-2	S31603	316L	SUS316L

* Quadruple certified means 316 / 316L / 1.4401 / 1.4404

Standard Features

- Bore Size 5 mm (0.197")
- Inlet and Vent Connection: Selectable 1/2 NPT Female Inlet & 1/4 NPT Female Vent or G 1/4 Female – DIN 3852-2
- Equalize and Vent Valves are equipped with an Anti-Tamper Head Unit – Anti-Tamper Head Unit Options see Page 4.
- Suitable for Liquid and Gas Service.
- Fully Self-draining

Needle Seal:

PTFE and Graphite Packings are available for all valve types.

Sour Gas Service:

Wetted Parts according to a.m. material list are supplied as standard according to NACEMR0175/MR0103 and ISO 15156 (latest issue). However, valves in 316 are optionally available with a needle in Alloy 400, in accordance to MESC Specification.

Pressure Test:

A Shell Test and a Seat Leakage Test are performed at 1.5 times the max. allowable (working) pressure acc. to EN 12266-1 - P10, P11 and P12 respectively MSS-SP61 (and complies also with ASME B31.1 and B31.3) at every Standard Manifold → 100% Pressure Tested!

Certification:

Certified Mill Test Report (CMTR) as inspection certificate 3.1 acc. to EN 10 204 for valve body material and pressure test available as standard.

PMI Test on request. Test points are one each on body and valve bonnet. A combined certificate for each order is provided listing the chemical analysis for each valve manifold.

Graphite packed manifolds are Fire Safe Tested and Certified as standard.

Optional Features

Oxygen Service:

An option with Reinforced PTFE Packing is offered duly cleaned and lubricated for Oxygen Service:

Pressure-Temperature Rating:

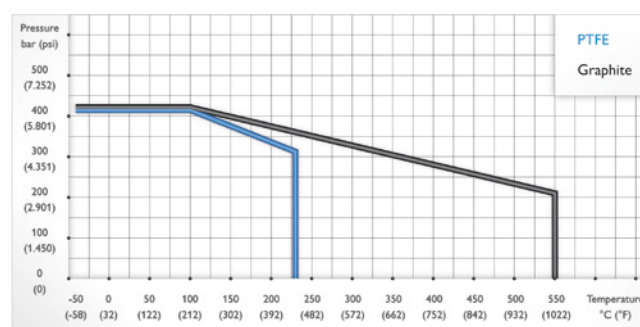
Max. 420 bar (6,092 psi) @ 60°C (140°F)

Max. 200°C (392°F) @ 90 bar (1,305 psi)

Not every Valve Type is available for Oxygen Service!

If you don't find your options in this catalogue please contact Yokogawa.

Pressure-Temperature Rating



Packing adjustment may be required during the service life of the valves.



Valves that have not been cycled for a period of time may have a higher initial actuation torque.

Standard Valve Head Units

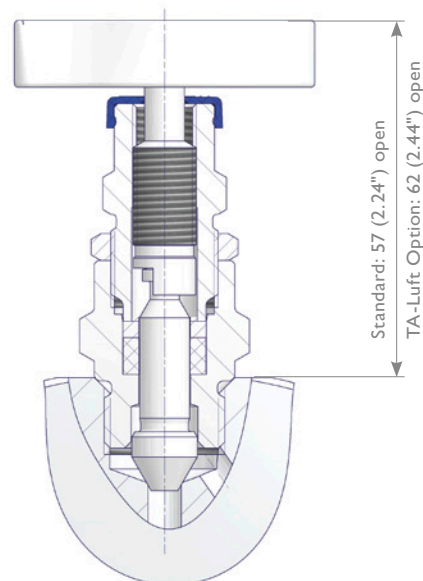
Standard Needle Valves

Screwed Bonnet – Needle Seal: Packing

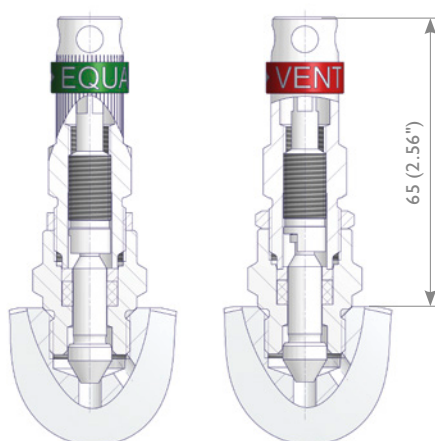
Features

- Integral Valve Seat – Metal to metal seated
- Non-rotating Needle
- External Stem Thread – Packing below stem threads. Stem threads are protected from process media (non-wetted).
- Stem with Cold Rolled Threads
- Blow-out Proof Needle
- Back Seat – Metal to metal secondary needle seal
- Lock Pin – Eliminates unauthorized removal of the bonnet
- Color Coded Dust Cap for operating thread protection
- Standard Packing in PTFE and Graphite available
- Max. allowable (Working) Pressure (PS): 420 bar (6,092 psi)
- Anti-Tamper Valve Head Units for Equalize and Vent Valves
- All Non-wetted Parts in 316 Stainless Steel

Isolate Valve



Equalize and Vent Valve



Anti-Tamper Key C13SA-ATKES



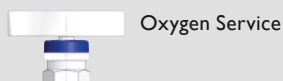
Components	Stainless Steel
	Material / Material No.
Body	316 / 316L
Bonnet	
Needle	
Plug	
Packing	PTFE or Graphite
Valve Stem	316 / 316L
Gland	316
Stem Nut	316
Lock Nut	316
Set Screw	316
T Handle	316
Lock Pin	A4

Wetted components listed in **bold**.

Color Coded Dust Cap For stem thread protection:

- Isolate BLUE
- Vent/Test RED
- Equalize GREEN

Color Coded Options Following options are also color coded below dust cap:



Manifolds

The Manifold can be assembled directly to a Standard Mounting Plate, eliminating the need for extra Mounting Accessories and reducing pipe work on site. The Manifolds can also be supplied with a wide Choice of Accessories.

Pressure-Temperature Rating acc. to Shell MESC:

Max. allowable (Working) Pressure (PS): DIN 19213 400 bar (5,801 psi) @ 38°C (100.4°F)
IEC 61518 413 bar (6,000 psi) @ 38°C (100.4°F)

Max. allowable Temperature (TS): 200°C (392°F)

Manifolds for Differential Pressure Transmitters

Connections

Instrument – Flange Connection acc. to:

- DIN 19213 Part 2 rev. 1980
- DN EN 61518 Type A

Process:

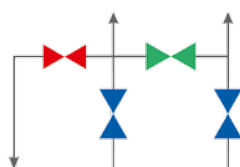
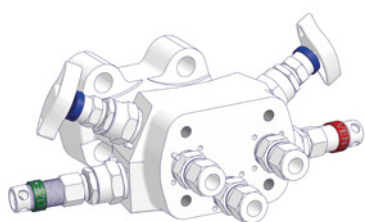
G 1/4 Female or 1/2 NPT Female

Vent:

G 1/4 Female or 1/4 NPT Female

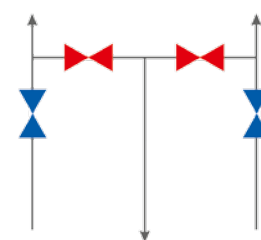
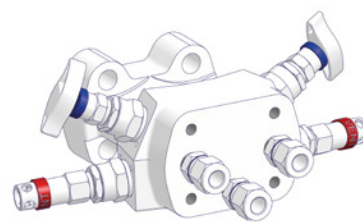
4 Valve Manifold – Type A

Double Isolate / Equalize / Vent Block



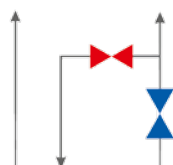
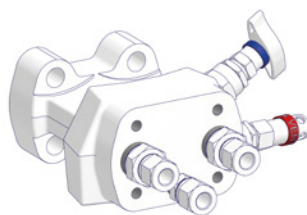
4 Valve Manifold – Type B

Double Isolate / Double Vent Block



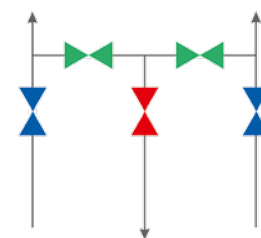
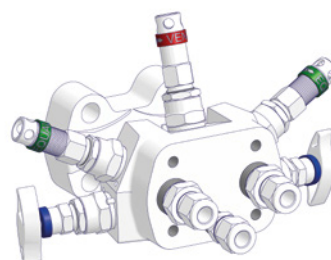
2 Valve Manifold – Type C

Single Isolate / Vent Block



5 Valve Manifold – Type K

Double Isolate / Double Equalize / Vent Block



Ordering Code – Different Types for Different Applications

Type	MESC Code	Description	Part Number	Ordering Information
A	MESC 60.98.56.20*.1	4 Valve Manifold For general applications.	C13SM-4A	See Page 14.
B	MESC 60.98.56.21*.1	4 Valve Manifold For applications where contamination of process stream is not permitted.	C13SM-4B	
C	MESC 60.98.56.22*.1	2 Valve Manifold For pressure applications and level measurements on atmospheric tanks.	C13SM-2C	
K	Not specified in Shell MESC	5 Valve Manifold With Natural Gas Metering Pattern.	C13SM-5K	

* Digit depends on compression fitting size – Fittings supplied by others.

Note: Direct Mount Manifolds according to MESC 60.98.56.2... are provided with PTFE Seal Ring / Packing. Manifolds with Graphite Seal Ring / Packing are according to MESC 60.98.56.4...!

Manifolds for Pressure Transmitters

Connections

Instrument – Flange Connection acc. to:

- DIN 19213 Part 2 rev. 1980
- DN EN 61518 Form A
- Swivel Gauge Connector 1/2 NPT resp. G 1/2

Process:

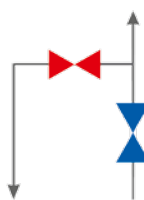
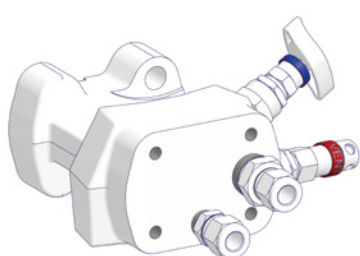
- G 1/4 Female or 1/2 NPT Female

Vent:

- G 1/4 Female or 1/4 NPT Female

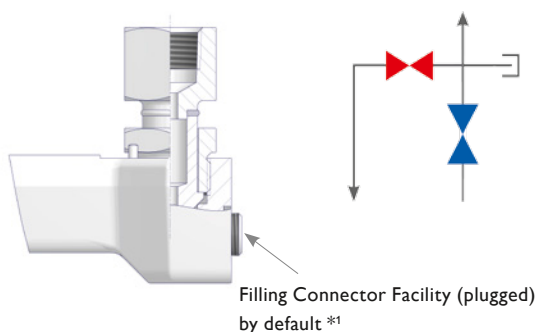
2 Valve Manifold – Type D

Single Isolate/Vent Block
Flange Connection DIN 19213



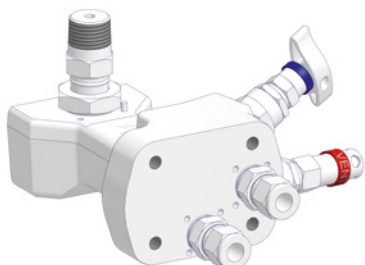
2 Valve Manifolds – Type E, F and G

with Swivel Gauge Adapter
see also below illustrations



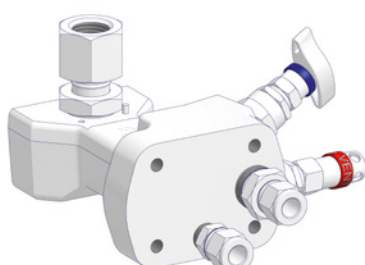
2 Valve Manifold – Type E

Single Isolate/Vent Block
Swivel Gauge Adaptor 1/2 NPT Male



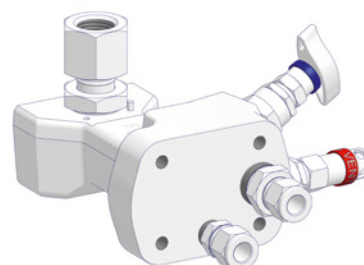
2 Valve Manifold – Type F

Single Isolate/Vent Block
Swivel Gauge Adaptor 1/2 NPT Female



2 Valve Manifold – Type G

Single Isolate/Vent Block
Swivel Gauge Adaptor G 1/2 Female



Ordering Code – Different Types for Different Applications

Type	MESC Code	Description	Part Number	Ordering Information
D	MESC 60.98.56.23*2.1	2 Valve Manifold For pressure transmitters of the differential body design.	C13SM-2D	See Page 14.
E	MESC 60.98.56.3*25.1	2 Valve Manifold For pressure transmitters with 1/2 NPT Female connection.	C13SM-2E	
F	MESC 60.98.56.3*25.1	2 Valve Manifold For pressure transmitters with 1/2 NPT Male connection.	C13SM-2F	
G	MESC 60.98.56.3*27.1	2 Valve Manifold For pressure transmitters with G 1/2 Male (1/2 BSP P) connection.	C13SM-2G	

*1 If required, a Filling Connector can also be retrofitted. However, Filling Connectors to be ordered separately, see page 11.

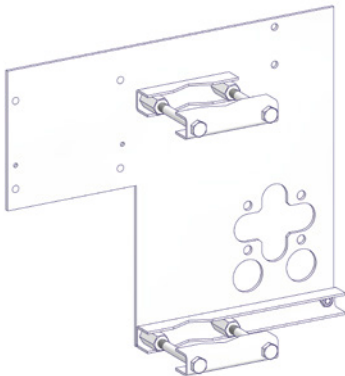
*2 Digit depends on compression fitting size – Fittings supplied by others.

Note: Direct Mount Manifolds according to MESC 60.98.56.2... are provided with PTFE Seal Ring / Packing. Manifolds with Graphite Seal Ring / Packing are according to MESC 60.98.56.4...!

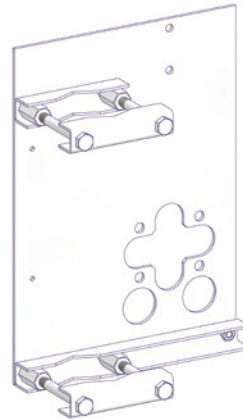
Mounting Plates

The Mounting Plates are designed to ensure a Simple and Quick Installation of Manifolds with other Accessories including the Nameplate. There are four different types of Mounting Plates available. The Plates are made of 316 SST and are designed to be assembled to a 2" Pipestand. Type C13SA-SAMA# is used, if a Protective Shade is required.

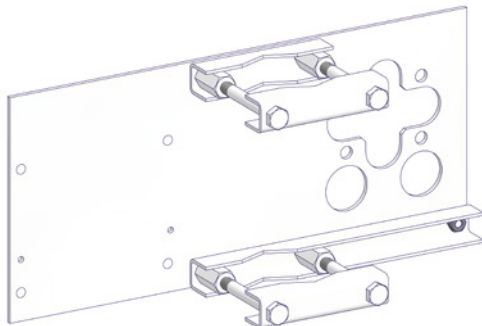
C13SA-SAMA1



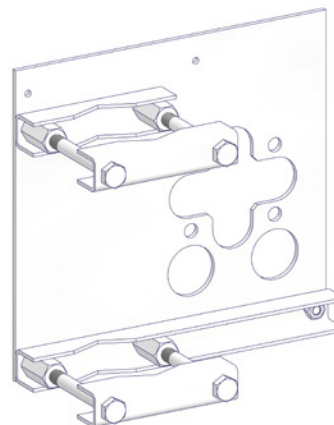
C13SA-SAMA2



C13SA-SAMB1



C13SA-SAMB2



Ordering Code

MESC Code	Standard Drawing	Description	Part Number
MESC 60.98.91.105.1	37.813	Mounting Plate A1	C13SA-SAMA1
MESC 60.98.91.110.1	37.815	Mounting Plate A2	C13SA-SAMA2
MESC 60.98.91.118.1	37.814	Mounting Plate B1	C13SA-SAMB1
MESC 60.98.91.120.1	37.816	Mounting Plate B2	C13SA-SAMB2
	37.601	Stainless Steel Tag Plate	C13SA-SACS0

Purge Blocks

Purge Blocks

The Purge Blocks have two main Applications:

1. Application:

Purge protection of the instrument using a purge medium to keep the process away from the instrument by maintaining a higher pressure than the process medium.

2. Application:

To provide a sensing medium for differential pressure instruments on level indication services.

Material: 316 / 316L / 1.4401 / 1.4404

There are two Vent Purge Blocks available, the Double Vent Purge Block for differential pressure application and the Single Vent Purge Block for static pressure applications.

Connections

G 1/4 Female (Standard) or
1/4 NPT Female (Optional)

Outlets:

Are equipped with Soft Seated Check Valves

Inlet:

Is provided with an Integral Filter

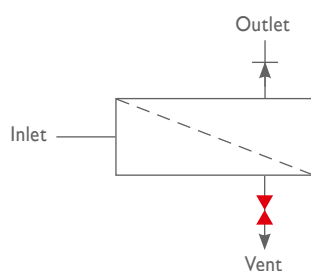
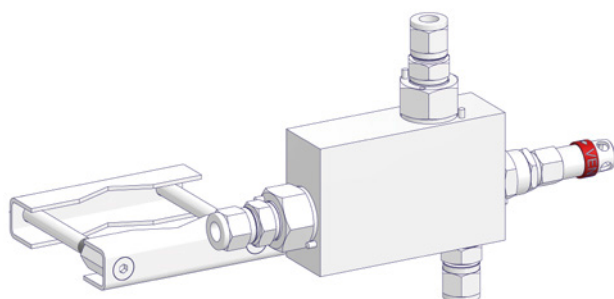
Pressure-Temperature Rating acc. to Shell MESC

Max. allowable (Working) Pressure (PS):
413 bar (6,000 psi) @ 38°C (100.4°F)

Max. allowable Temperature (TS):
• 200°C (392°F) for PTFE Packing

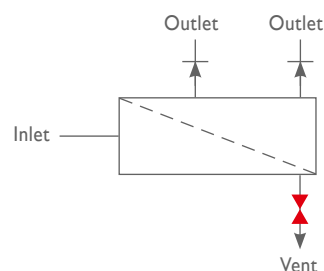
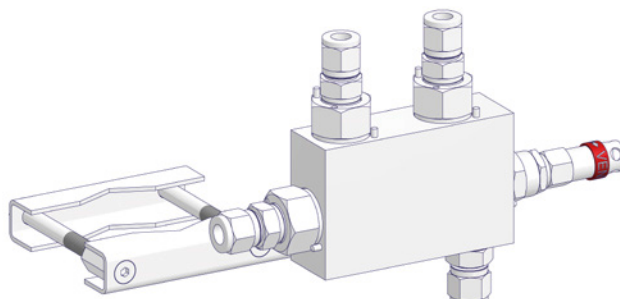
C13SA-SVAS#

Single



C13SA-SVAD#

Double



Ordering Code

MESC Code	Description	Connection	Part Number
MESC 60.98.70.*10.1	Single Vent Purge Block – Type S	G 1/4 Female	C13SA-SVASG
		1/4 NPT Female	C13SA-SVASC
MESC 60.98.70.*20.1	Double Vent Purge Block – Type D	G 1/4 Female	C13SA-SVADG
		1/4 NPT Female	C13SA-SVADC

* Digit depends on compression fitting size – Fittings supplied by others.

Seal Pots

The Seal Pots are used for systems requiring an open seal such as high temperature, toxic or corrosive service. The Seal Pots are used with an Immiscible Seal Fluid. The difference in density to the process media will provide a barrier in front of the Manifold and Instrument.

Location

Seal Pot is located below the Orifice Plate:
A Seal Fluid with higher specific gravity than the Process Medium is to be used.

Seal Pot is located above the Orifice Plate:
A Seal Fluid with lower specific gravity is to be used.

Pressure-Temperature Rating acc. to Shell MESC

Max. allowable (Working) Pressure (PS):
413 bar (6,000 psi) @ 38°C (100.4°F)

Max. allowable Temperature (TS):
450°C (842°F)

Specifications

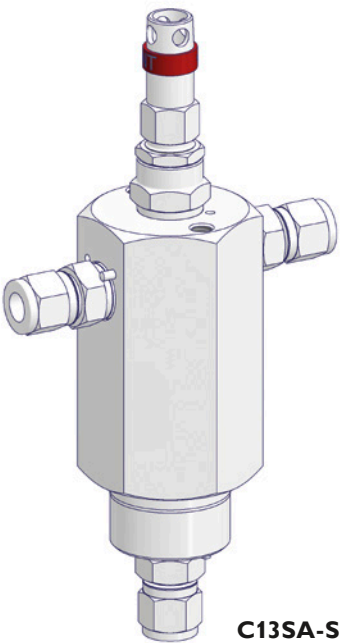
Material: 316 / 316L / 1.4401 / 1.4404 Volume: Approx. 50 cm³

Connection:
G 1/4 Female (Standard) or
1/4 NPT Female (Optional)

Ordering Code

MESC Code	Description	Connection	Part Number
MESC 60.98.70.**0.1	Seal Pot	G 1/4 Female	C13SA-SSB0G
		1/4 NPT Female	C13SA-SSB0C

* Digits depend on compression fitting size – Fittings supplied by others.



C13SA-SSB0#

Heaters

Heaters

The Steam Tracing Blocks & Electrical Heaters are used to provide Frost Protection and to maintain Process Temperatures given that the heaters are mounted directly to the Manifold which ensures efficient Heat Transfer to the Manifold and Transmitter Body.

Steam Tracing Blocks

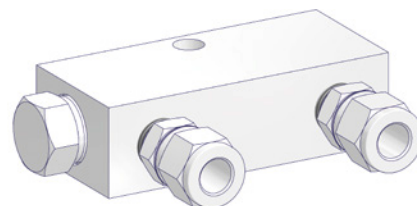
Steam Tracing is provided through a separate Stainless Steel Block which is mounted directly to the Manifold with one Stainless Steel M8 Mounting Bolt.

The Connection to the Steam Line is provided by two G 1/4 Female Ports as standard, optional by two 1/4 NPT Female Ports.

Steam Tracing Blocks – Pressure-Temperature Rating acc. to Shell MESC

Max. allowable (Working) Pressure (PS):
20 bar (290 psi) @ 210°C (410°F)

Max. allowable Temperature (TS):
220°C (428°F)



C13SA-SAS0#

Electrical Heater

Conduction Heater with self-limiting output characteristic, supplied with cable length of 1m. Is directly mounted to the Manifold with one Stainless Steel M8 Mounting Bolt.

Material: Aluminum (sea water resistant)

Size: 90 x 40 x 30 mm

Voltage: 110 V to 265 V AC (50/60 Hz)

Rating: 50 W

Ingress Protection: IP68, NEMA 4X

Type of Protection (Gas): II 2 G Ex db IIC T4

Type of Protection (Dust): II 2 D Ex tb IIIC; T 135°C

EC Examination Certificate: PTB 02 ATEX 1116 X



C13SA-SAE00

Ordering Code

MESC Code	Description	Connection	Part Number
MESC 60.98.70.*10.1	Steam Tracing Block	G 1/4 Female	C13SA-SAS0G
		1/4 NPT Female	C13SA-SAS0C
MESC 60.98.70.050.1	Electrical Heater		C13SA-SAE00

* Digits depend on compression fitting size – Fittings supplied by others.

Filling Connectors, Blind Flanges & Anti-Tamper

Filling Connectors

The Filling Connectors are used if purge protection is required but no purge block is installed. The Filling Connector allows the system to be filled with Purge Medium through the instrument cavities. The Filling Connector has an integral Check Valve and is available with different connections.

Material: 316 / 316L / 1.4401 / 1.4404

The Filling Connector is supplied with SS 316 Hex Bolts 7/16-20 UNF x 1 1/2" and PTFE Seal Ring as Standard. Flange Connection according to DIN 19213. If a Graphite Seal Ring is specified, the Flange Connection will be according to IEC 61518 Type A.

Pressure-Temperature Rating acc. to Shell MESC

Max. allowable (Working) Pressure (PS):

DIN 19213 400 bar (5,801 psi) @ 38°C (100.4°F)

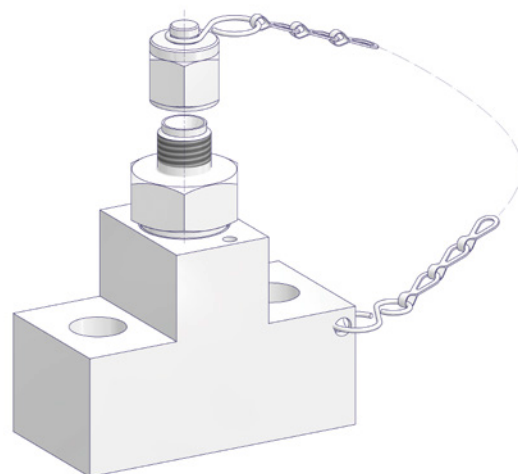
IEC 61518 413 bar (6,000 psi) @ 38°C (100.4°F)

Max. allowable Temperature (TS):

200°C (392°F)

Ordering Code

MESC Code	Description	Seal Ring	Part Number
MESC 60.98.90.106.1	Filling Connector 6 mm	PTFE	C13SA-SAFA1
MESC 60.98.90.406.1		Graphite	C13SA-SAFB1
MESC 60.98.90.107.1	Filling Connector 1/4"	PTFE	C13SA-SAFA7
MESC 60.98.90.407.1		Graphite	C13SA-SAFB7



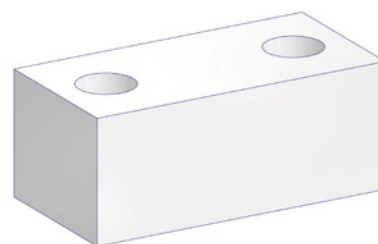
C13SA-SAFA##

Blind Flanges

The Blind Flange enables standard instrument flange connections to be blanked off as required.

Material: 316 / 316L / 1.4401 / 1.4404

The Blind Flange is supplied with SS 316 Hex Bolts 7/16-20 UNF x 1 1/2" and PTFE Seal Ring as Standard. Flange Connection according to DIN 19213. If a Graphite Seal Ring is specified, the Flange Connection will be according to IEC 61518 Type A.



C13SA-SAGA0 – PTFE Seal Ring

C13SA-SAGB0 – Graphite Seal Ring

Anti-Tamper Key

Removable Anti-Tamper Key to operate the Anti-Tamper Vent Valves.



C13SA-ATKES

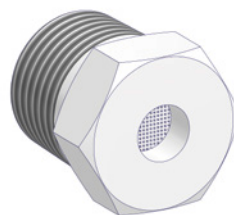
Port Protectors, Protective Shades & Enclosures

Port Protectors

The Port Protectors prevent the ingress of Bugs and Dirt and are supplied in SS 316/316L.

Ordering Code

Description	Part Number
Port Protector 1/4 NPT	C13SA-SADN2
Port Protector 1/2 NPT	C13SA-SADN4
Port Protector G 1/4	C13SA-SADG2
Port Protector G 1/2	C13SA-SADG4



C13SA-SAD##

Protective Shades & Enclosures

The Protective Shades were designed to protect the Instrument from Heavy Rain and Intensive Sunlight.

The Enclosures provide a Complete Environmental Protection of the Manifold and the Instrument Body. They are mainly used if the System is exposed to Low Temperatures.

Ordering Code

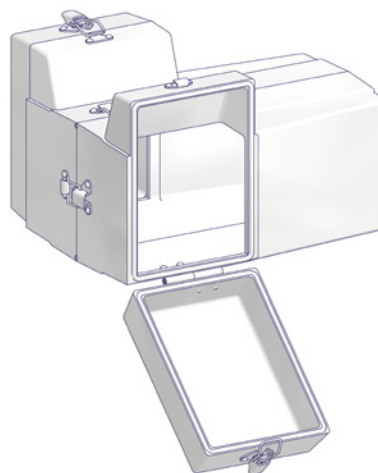
MESC Code	Description	Part Number
MESC 60.98.91.205.1	Protective Shade G.R.P. Antistatic	C13SA-SAPPA
	Protective Shade SS 316	C13SA-SAPPS
MESC 60.98.91.305.1	Enclosure G.R.P. Antistatic	C13SA-SAPEA



Protective Shade
C13SA-SAPPA



Protective Shade
C13SA-SAPPS



Enclosure
C13SA-SAPEA

Cross Reference – Referring to the Global MESC Code

MESC Code	Description	Seal Ring / Packing	Part Number	Page
MESC 60.98.56.20*.1	4 Valve Manifold Type A	PTFE	C13SM-4AA	5
MESC 60.98.56.40*.1		Graphite	C13SM-4AB	
MESC 60.98.56.21*.1	4 Valve Manifold Type B	PTFE	C13SM-4BA	
MESC 60.98.56.41*.1		Graphite	C13SM-4BB	
MESC 60.98.56.22*.1	2 Valve Manifold Type C	PTFE	C13SM-2CA	
MESC 60.98.56.42*.1		Graphite	C13SM-2CB	
MESC 60.98.56.23*.1	2 Valve Manifold Type D	PTFE	C13SM-2DA	6
MESC 60.98.56.43*.1		Graphite	C13SM-2DB	
MESC 60.98.56.3*.5.1	2 Valve Manifold Type E	PTFE	C13SM-2EA	
MESC 60.98.56.3*.5.1	2 Valve Manifold Type F	PTFE	C13SM-2FA	
MESC 60.98.56.3*.7.1	2 Valve Manifold Type G	PTFE	C13SM-2GA	7
MESC 60.98.91.105.1	Mounting Plate A1		C13SA-SAMA1	
MESC 60.98.91.110.1	Mounting Plate A2		C13SA-SAMA2	
MESC 60.98.91.118.1	Mounting Plate B1		C13SA-SAMB1	
MESC 60.98.91.120.1	Mounting Plate B2		C13SA-SAMB2	8
MESC 60.98.70.*10.1	Single Vent Purge Block Type S	PTFE	C13SA-SVASG	
MESC 60.98.70.*20.1	Double Vent Purge Block Type D	PTFE	C13SA-SVADG	9
MESC 60.98.70.*0.1	Seal Pot	Graphite	C13SA-SSB0G	
MESC 60.98.70.*10.1	Steam Tracing Block		C13SA-SAS0G	10
MESC 60.98.70.050.1	Electrical Heater		C13SA-SAE00	
MESC 60.98.90.106.1	Filling Connector 6 mm	PTFE	C13SA-SAFA1	11
MESC 60.98.90.406.1		Graphite	C13SA-SAFB1	
MESC 60.98.90.107.1	Filling Connector 1/4"	PTFE	C13SA-SAFA7	
MESC 60.98.90.407.1		Graphite	C13SA-SAFB7	
	Blind Flange	PTFE	C13SA-SAGA0	
		Graphite	C13SA-SAGB0	
	Anti-Tamper Key		C13SA-ATKES	12
	Port Protector		C13SA-SAD##	
MESC 60.98.91.205.1	Protective Shade G.R.P. Antistatic		C13SA-SAPPA	
	Protective Shade SST		C13SA-SAPPS	
MESC 60.98.91.305.1	Enclosure G.R.P. Antistatic		C13SA-SAPEA	

* Compression Fittings supplied by others.

Ordering Information – Standard & Additional Features

	Model	Suffix Codes	Description
Standard Features	C13SM	Manifold (AS-Schneider) – Modular Mounting System
	Valve Type / Seal Rings	-2CA	2 Valve, Type C, PTFE Packing / Seal Rings, DIN 19213 Part 2
		-2CB	2 Valve, Type C, Graphite Packing / Seal Rings, IEC 61518-A
		-2DA	2 Valve, Type D, PTFE Packing / Seal Rings, DIN 19213 Part 2
		-2DB	2 Valve, Type D, Graphite Packing / Seal Rings, IEC 61518-A
		-2EA	2 Valve, Type E, PTFE Packing, 1/2 NPT Male
		-2EB	2 Valve, Type E, Graphite Packing, 1/2 NPT Male
		-2FA	2 Valve, Type F, PTFE Packing, 1/2 NPT Female
		-2FB	2 Valve, Type F, Graphite Packing, 1/2 NPT Female
		-2GA	2 Valve, Type G, PTFE Packing, G 1/2 Female
		-2GB	2 Valve, Type G, Graphite Packing, G 1/2 Female
		-4AA	4 Valve, Type A, PTFE Packing / Seal Rings, DIN 19213 Part 2
		-4AB	4 Valve, Type A, Graphite Packing / Seal Rings, IEC 61518-A
		-4BA	4 Valve, Type B, PTFE Packing / Seal Rings, DIN 19213 Part 2
		-4BB	4 Valve, Type B, Graphite Packing / Seal Rings, IEC 61518-A
		-5KA	5 Valve, Type K, PTFE Packing / Seal Rings, DIN 19213 Part 2
		-5KB	5 Valve, Type K, Graphite Packing / Seal Rings, IEC 61518-A
	Material / Connections	-SB	SS 316/316L, Process 1/2 NPT Female / Vent 1/4 NPT Female
		-SG	SS 316/316L, Process G 1/4 Female / Vent G 1/4 Female
	–	00	Always '00', None

	Model	Suffix Codes	Description
Additional Features	Oxygen Service – For Manifolds with PTFE Packing only	-K2	For 2 Valve
		-K4	For 4 Valve
		-K5	For 5 Valve
		-NN	None
	Sour Gas Service	SG2	NACE MR0175 with Alloy 400 Needle, 2 Valve
		SG4	NACE MR0175 with Alloy 400 Needle, 4 Valve
		SG5	NACE MR0175 with Alloy 400 Needle, 5 Valve
		NNN	None
	PMI Test Report		/P
			For 2,4 and 5 Valve Manifold

Example for building up the Part No. of a 4 Valve Manifold acc. to the above mentioned Ordering Information:

C13SM-4 AA-SB00 -NNNNN	Manifold (AS-Schneider) – Modular Mounting System
C13SM-4	4 Valve Manifold
..... AA	Type A, PTFE Packing / Seal Rings, DIN 19213 Part 2
..... -SB	SS 316/316L, Process 1/2 NPT Female / Vent 1/4 NPT Female
..... 00	Always '00', None
..... -NN	None
..... NNN	None

Ordering Information – Accessories

	Model	Suffix Codes	Description
Accessory	C13SA	Accessory for Manifold (AS-Schneider) – Modular Mounting System
	For Modular Mounting Manifolds	-SAMA1	Mounting Plate A1, SS 316
		-SAMA2	Mounting Plate A2, SS 316
		-SAMB1	Mounting Plate B1, SS 316
		-SAMB2	Mounting Plate B2, SS 316
		-SACS0	Tag Plate, SS 316
		-SAPPS	SAP Protective Shade SS 316
		-SAPPA	SAP Protective G.R.P. Antistatic
		-SAPEA	SAE Enclosure G.R.P. Antistatic
		-SADN2	Port Protectors, 1/4 NPT, SS 316
		-SADN4	Port Protectors, 1/2 NPT, SS 316
		-SADG2	Port Protectors, G 1/4, SS 316
		-SADG4	Port Protectors, G 1/2, SS 316
		-SVASG	Purge Blocks, Single Vent, G 1/4, SS 316
		-SVASC	Purge Blocks, Single Vent, 1/4 NPT, SS 316
		-SVADG	Purge Blocks, Double Vent, G 1/4, SS 316
		-SVADC	Purge Blocks, Double Vent, 1/4 NPT, SS 316
		-SSB0G	Seal Pot, G 1/4, SS 316
		-SSB0C	Seal Pot, 1/4 NPT, SS 316
		-SAS0G	Steam Tracing Block, G 1/4, SS 316
		-SAS0C	Steam Tracing Block, 1/4 NPT, SS 316
		-SAE00	Electrical Heater, Aluminum (sea water resistant)
		-SAFA1	Filling Connector, SS 316, PTFE Seal Ring, for Tube OD 6 mm
		-SAFB1	Filling Connector, SS 316, Graphite Seal Ring, for Tube OD 6 mm
		-SAFA7	Filling Connector, SS 316, PTFE Seal Ring, for Tube OD 1/4"
		-SAFB7	Filling Connector, SS 316, Graphite Seal Ring, for Tube OD 1/4"
		-SAGA0	Blind Flange, SS 316, PTFE Seal Ring
		-SAGB0	Blind Flange, SS 316, Graphite Seal Ring
	Common	-ATKES	Anti-Tamper Key
		-SRPAN	Seal Ring, PTFE, DIN 19213 / IEC A
		-SRGAN	Seal Ring, Graphite, IEC A

Products are designed and manufactured by Armaturenfabrik Franz Schneider (AS-Schneider), Germany for Yokogawa Electric Corporation.

ARMATURENFABRIK FRANZ SCHNEIDER GMBH + CO. KG
World Headquarters
Bahnhofplatz 12, 74226 Nordheim, Germany
Tel: +49 7133 101-0
<http://www.as-schneider.com>

AS-SCHNEIDER ASIA-PACIFIC PTE. LTD.
970 Toa Payoh North, #02-12/14/15, Singapore 318992,
Singapore
Tel: +65 62 51 39 00
<http://www.as-schneider.sg>

ARMATURENFABRIK FRANZ SCHNEIDER SRL
Str. Basarabilor, Nr. 7, 100036 Ploiesti, Romania
Tel: +40 244 384 963
<http://www.as-schneider.ro>

AS-SCHNEIDER AMERICA, INC.
17471 Village Green Dr, Houston, TX 77040, U.S.A.
Tel: +1 281 760 1025
<http://www.as-schneider.com>

AS-SCHNEIDER MIDDLE EAST FZE
P.O. Box 18749, Dubai, United Arab Emirates
Tel: +971 4 880 85 75
<http://www.as-schneider.ae>



YS-3601-EN | January 2020 / 3rd Edition

DPharp® **EJX®** **EJA®** are registered trademarks of Yokogawa Electric Corporation.

Other company names and product names used in this material are registered trademarks or trademarks of their respective owners.

YOKOGAWA ELECTRIC CORPORATION
World Headquarters
2-9-32, Nakacho, Musashino-shi, Tokyo 180-8750, Japan
<http://www.yokogawa.com>

YOKOGAWA CORPORATION OF AMERICA
2 Dart Road, Newnan, GA30265, U.S.A.
<http://www.yokogawa.com/us/>

YOKOGAWA EUROPE B.V.
Euroweg 2, 3825 HD Amersfoort, The Netherlands
<http://www.yokogawa.com/eu/>

YOKOGAWA ENGINEERING ASIA PTE. LTD.
5 Bedok South Road, Singapore 469270
<http://www.yokogawa.com/sg/>

YOKOGAWA CHINA CO., LTD.
3F TowerD Cartelo Crocodile Building, No. 568 West Tianshan Road,
Shanghai 200335, China
<http://www.yokogawa.com/cn/>

YOKOGAWA MIDDLE EAST B.S.C.(c)
P.O. Box 10070, Manama
Building 577, Road 2516, Busaiteen 225, Muharraq, Bahrain
<http://www.yokogawa.com/bh/>

Represented by: