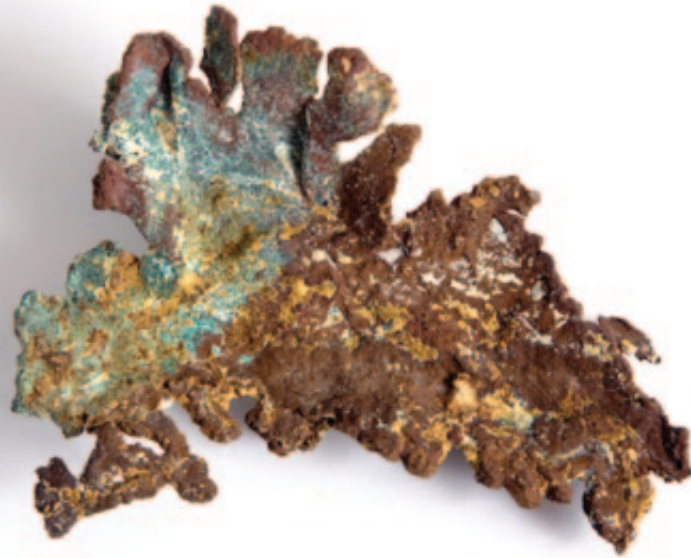


Copper

Cu



Uses: As copper is an excellent conductor of electricity, most of the copper consumed is used in electrical application

Factors influencing demand:

Current demand is being driven by the demand for housing and automobiles in China



Image courtesy of Glencore Xstrata



Yokogawa's involvement with copper

We have control systems in these mines

GlencoreXstrata GlencoreXstrata's Ernest Henry Mine - Cloncurry NW Queensland

An Underground mine producing 34,000 tonnes of copper concentrate in 2012. Processing plant controlled by a Yokogawa Centum DCS system. The mine also uses AXF flow meters, EJX pressure transmitters and analytical products.

GlencoreXstrata GlencoreXstrata's Mt Isa Mine - Mt Isa NW Queensland

An underground mine producing 142,000 tonnes of copper concentrate in 2012. Copper smelter controlled by a Yokogawa Centum DCS. The mine also uses AXF flow meters, EJX pressure transmitters and analytical products.

Yokogawa Instrument Users

- **Aditya Birla's Nifty and Mt Gordon mines –**
 - Nifty is located in the Pilbara
 - Mt Gordon is near Mt Isa
 - AXF flow meters
 - EJX transmitters and analyser products
- **Hillgrove Resources – Kanmantoo mine**
 - Located west of Adelaide in South Australia
 - AXF flow meters
 - EJX transmitters and analyser products
- **Snowpeak Mining**
 - Several mines located in North Queensland
 - AXF flow meters
 - EJX transmitters and analyser products
- **Oz Minerals Prominent Hill mine**
 - Located in north west South Australia
 - AXF flow meters
 - EJX transmitters and analyser products
- **BHP Billiton Olympic Dam mine**
 - Located in north west South Australia
 - AXF flow meters
 - EJX transmitters and analyser products