



# Yokogawa's AXON Control

## Brewing/Distilling Control System

# BATCH RECIPE CHALLENGES AND OPPORTUNITIES

Ready to install control system, designed and built specifically for your application

## Features

### Designed and Built to Customers Specific Needs

The AXON Brewing/Distilling Control System allows customers to order a control system that is designed and built for their specific needs, small or large. The AXON Brewing/Distilling Control System will arrive pre-configured, programmed and ready to run. Installation involves mounting the enclosure, landing the field wiring, and applying power.

### Process Control

The AXON Control System can control all temperature, flow and timing requirements of each batch recipe created. The result is a very high quality, consistent and repeatable beer or spirit flavor.

### Ease of Use for Operators

Once powered up, the AXON Brewing/Distilling Control System features intuitive, easy-to-read screens, combined with ease of navigation. Operators will quickly learn to operate the AXON system. Artisans can easily implement product batch recipe management and data reporting features, locally or from a remote location if required.

### Data Logging

The AXON Brewing/Distilling Control System features data logging for all test readings. The logging is active during recipe runs. All logged data is stored internally in the recording unit on industry standard media. When recipe run is completed, the data files can be automatically FTP'd to a server or other PC for analysis, report generation and archive.

### Easy to Load Recipes for Multiple Product Runs

Allows the development and management of multiple product recipe runs. Recipes can be created locally and then saved on separate media or computer, then easily re-loaded into the AXON Brewing/Distilling Control System locally or remotely.

### Expandable

The AXON Brewing/Distilling Control System can expand to a system consisting of multiple production lines, without having to upgrade the base system. Each system can run independent recipes. All production systems can be locally or remotely viewed and controlled.

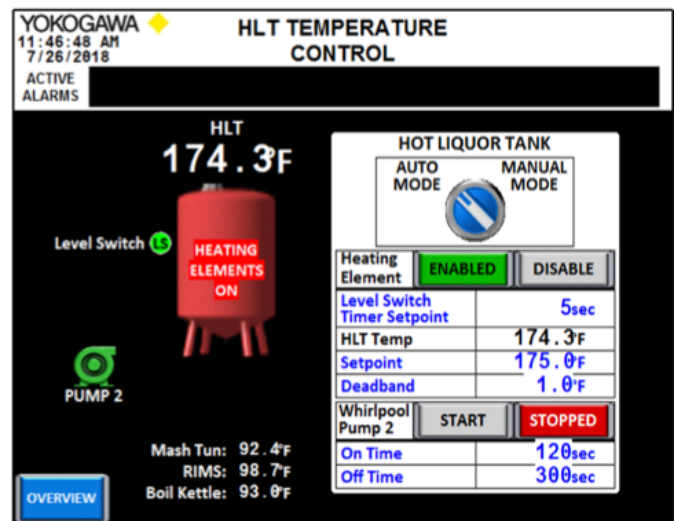
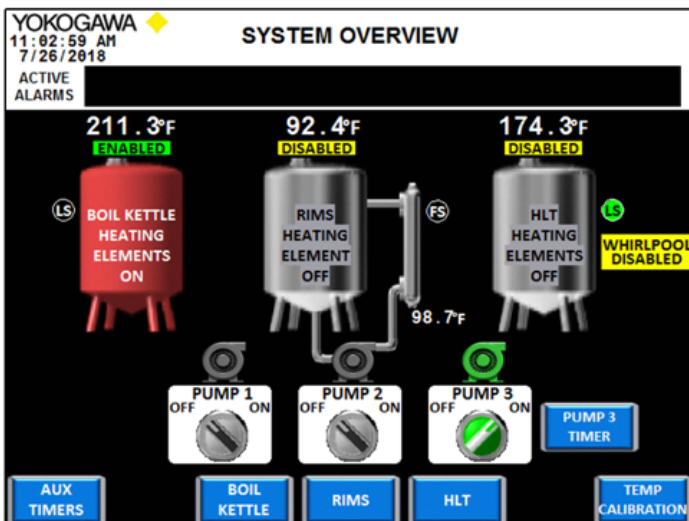
### Best in Class Temperature Control

The temperature control module enables fine control at high speed, accuracy, and resolution. It's built-in "SUPER" function suppresses overshooting using fuzzy theory and a "dynamic auto-tuning" function to deliver the best possible manufacturing quality.

### Wireless Access

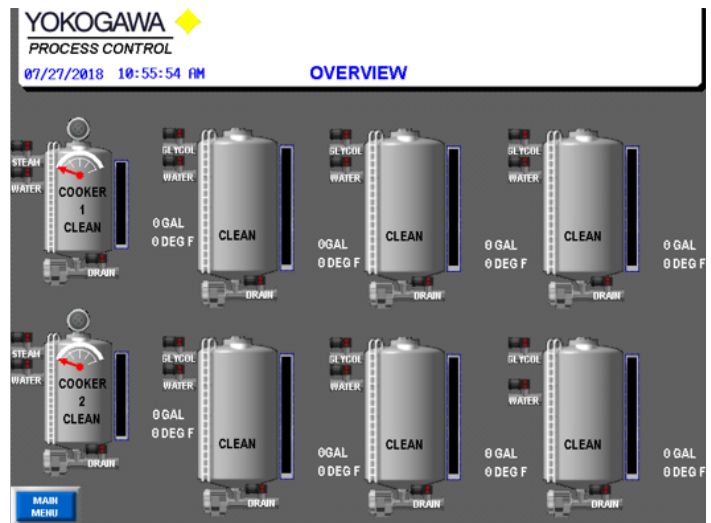
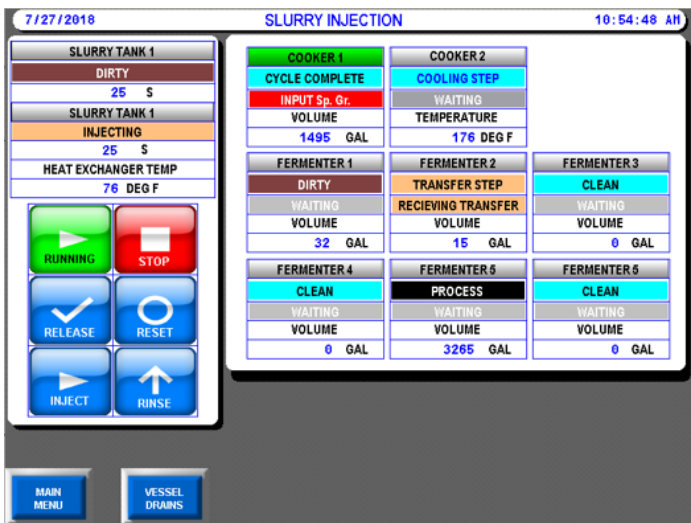
- Send SMS text messages for alarm conditions or status reports
- Mobile app available
- Send status / alarm email
- Access data logs
- Remote viewing and remote control

## Control Screens

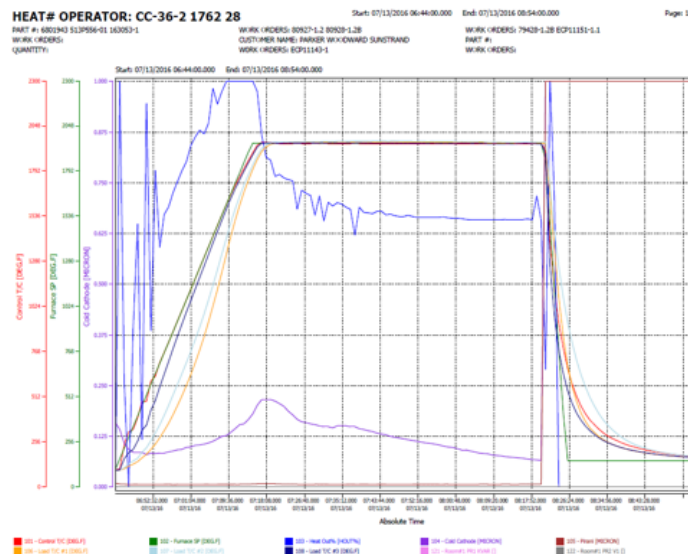




# ACHIEVE HIGH QUALITY, CONSISTENT AND REPEATABLE FLAVOR



## Report Generation



## Trend Report

**Batch: P1711**

Start: 03/23/2012 02:30:12.000 End: 03/23/2012 05:30:12.000

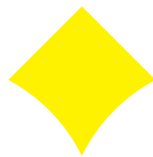
Page: 1

Time Stamp	Min	Max	Min	Max	Min	Max	Min	Max	Min	Max	Min	Max	Min	Max	Min	Max	Min	Max
19/03/2012 02:30:12.000	79.1	79.1	150.4	150.4	150.4	150.4	150.4	150.4	150.4	150.4	150.4	150.4	150.4	150.4	150.4	150.4	150.4	150.4
19/03/2012 02:30:14.000	79.1	79.1	150.4	150.4	150.4	150.4	150.4	150.4	150.4	150.4	150.4	150.4	150.4	150.4	150.4	150.4	150.4	150.4
19/03/2012 02:30:16.000	79.1	79.1	150.4	150.4	150.4	150.4	150.4	150.4	150.4	150.4	150.4	150.4	150.4	150.4	150.4	150.4	150.4	150.4
19/03/2012 02:30:18.000	79.1	79.1	150.4	150.4	150.4	150.4	150.4	150.4	150.4	150.4	150.4	150.4	150.4	150.4	150.4	150.4	150.4	150.4
19/03/2012 02:30:20.000	79.1	79.1	150.4	150.4	150.4	150.4	150.4	150.4	150.4	150.4	150.4	150.4	150.4	150.4	150.4	150.4	150.4	150.4
19/03/2012 02:30:22.000	79.1	79.1	150.4	150.4	150.4	150.4	150.4	150.4	150.4	150.4	150.4	150.4	150.4	150.4	150.4	150.4	150.4	150.4
19/03/2012 02:30:24.000	79.1	79.1	150.4	150.4	150.4	150.4	150.4	150.4	150.4	150.4	150.4	150.4	150.4	150.4	150.4	150.4	150.4	150.4
19/03/2012 02:30:26.000	79.1	79.1	150.4	150.4	150.4	150.4	150.4	150.4	150.4	150.4	150.4	150.4	150.4	150.4	150.4	150.4	150.4	150.4
19/03/2012 02:30:28.000	79.1	79.1	150.4	150.4	150.4	150.4	150.4	150.4	150.4	150.4	150.4	150.4	150.4	150.4	150.4	150.4	150.4	150.4
19/03/2012 02:30:30.000	79.1	79.1	150.4	150.4	150.4	150.4	150.4	150.4	150.4	150.4	150.4	150.4	150.4	150.4	150.4	150.4	150.4	150.4
19/03/2012 02:30:32.000	79.1	79.1	150.4	150.4	150.4	150.4	150.4	150.4	150.4	150.4	150.4	150.4	150.4	150.4	150.4	150.4	150.4	150.4
19/03/2012 02:30:34.000	79.1	79.1	150.4	150.4	150.4	150.4	150.4	150.4	150.4	150.4	150.4	150.4	150.4	150.4	150.4	150.4	150.4	150.4

## Tabular Report

## Summary

Yokogawa has been manufacturing control products for 50 plus years. Yokogawa understands the importance of precise and reliable control and consistent process data. The quality of the control and process data is directly related to the quality of your products. The AXON Control System is designed and operates based on Yokogawa's extensive manufacturing and control experiences. Yokogawa's AXON Brewing/Distilling Control System is a ready to install control system, designed and built specifically for your application. Upon startup, you will find the system easy to use and process data will be available right away. Allow Yokogawa's experience and AXON Brewing/Distilling Control System to help you grow your business while helping to improve your products verify and quality.



**YOKOGAWA**

Co-innovating tomorrow™

[www.yokogawa.com](http://www.yokogawa.com)

**Yokogawa Corporation of America**

12530 W. Airport Blvd.,  
Sugar Land, TX 77478  
[www.yokogawa.com/us](http://www.yokogawa.com/us)

**Yokogawa Canada, Inc.**

Bay 4, 11133 40th Street SE,  
Calgary, AB T2C 2Z4  
[www.yokogawa.com/ca](http://www.yokogawa.com/ca)

**Yokogawa de México, SA de CV**

Urbina No. 18  
Parque Industrial Naucalpan  
Naucalpan de Juarez, Estado de México  
C.P. 53370  
[www.yokogawa.com/mx](http://www.yokogawa.com/mx)