

# How to Configure the DX Data Recording/Storage Settings

Paperless Recorder | DX1000, DX1000N, DX2000

**This tech note explains how to configure the DX data storage settings. Select the file type, the file length, the recording interval, and the conditions for automatically saving a new file at the desired interval (daily, weekly, etc.)**

Select Display or Event file type, and complete the settings for the chosen type. Use steps 1 & 2 for Display data settings, or steps 3 & 4 for Event data settings.

Refer to the main User Manual for the DX model for more information on all functions and settings.

## 1. Go to basic setting mode

Press **MENU** key

- Hold **FUNC** key for 3 seconds

Select **Menu** tab

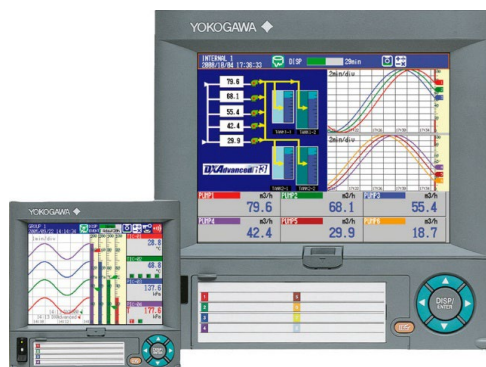
Select **A/D, Memory** to choose the file type.

- **Display** file type .DSD; holds min/max channel values saved at the trend update interval. This is an archive of the trend display data.
- **Event** file type .DSE; holds instantaneous channel values saved at a specified interval.
- **E+D** saves Display data files and triggered Event data files.

## 2. Choose END and store settings

When finished with all settings in this menu, choose **End**.

- **Yes** - setting changes are saved and the DXA restarts.
- **No** - setting changes are not saved and the DXA restarts.
- **Cancel** - remain in this menu.



Paperless Recorders - DX1000/DX2000

### 3. Display file record settings

Press **MENU** key

- Menu tab > select **Display**
- Select **Trend/Save interval**
  - Select a **Trend interval** [/div]. Example: **30min**
  - Select a **Save interval**. Example: **1 day**
    - This determines the length of the Display data file.

Explanation: the trend interval is the trend display update interval and it determines how frequently MIN/MAX data is saved to the Display file.

- Convert this time to seconds and divide by 30 to know the Display file record interval in seconds.
- Example for 30min/div:  $(1800/30) = 60$  second record interval. Data will be saved to the Display file every 60 seconds.

### 4. Timer and Event Action settings; save Display

The DX can save a new data file at a specific time and interval. This is controlled by the Match Time Timer and Event Action functions.

Press **MENU** key

- Menu tab > select **Timer, Event action**
  - Choose > **Match time timer**
    - Select a timer number. Example: **1**
    - Set **Kind** to the desired interval. Example: **Day**
    - Set **Hour:Minute**. Example: **00:00**
    - Set **Timer action**. Example: **Repeat**
  - Press **ESC** and select > **Event action**
    - Select a Logic box number. Example: **1**
    - Select **Event** > **Matchtime**
    - Select **Match Time Timer No.** Example: **1**
    - Select **Action** > **SaveDisp**

Operation: When the Match time timer expires, the DX closes the file in memory and copies it to the CF media. It automatically starts saving a new file in memory. This cycle repeats each time the timer expires.

## 5. Event file record settings

Press **MENU** key

- Menu tab > select **Data save > Event data**
  - Select a **Sample rate**. Example: **1 min**
  - Select a **Mode**. Example: **Free**
    - See chapter 6 of the main User Manual for details on Single and Repeat Trigger mode operation.
  - Select a **Data length**. Example: **1 day**

## 6. Timer and Event Action settings; save Event

The DX can save a new data file at a specific time and interval. This is controlled by the Match Time Timer and Event Action functions.

Press **MENU** key

- Menu tab > select **Timer, Event action**
  - Choose > **Match time timer**
    - Select a timer number. Example: **1**
    - Set **Kind** to the desired interval. Example: **Day**
    - Set **Hour:Minute**. Example: **00:00**
    - Set **Timer action**. Example: **Repeat**
  - Press **ESC** and select > **Event action**
    - Select a Logic box number. Example: **1**
    - Select **Event > Matchtime**
    - Select **Match Time Timer No.** Example: **1**
    - Select **Action > SaveEvent**

Operation: When the Match time timer expires, the DX closes the file in memory and copies it to the CF media. It automatically starts saving a new file in memory. This cycle repeats each time the timer expires.

**OpreX™** Yokogawa achieves operational excellence by providing products, services, and solutions based on the OpreX comprehensive brand that cover everything from business management to operations.

Trademarks Co-innovating tomorrow, OpreX and all product names of Yokogawa Electric Corporation in this bulletin are either trademarks or registered trademarks of Yokogawa Electric Corporation. All other company brand or product names in this bulletin are trademarks or registered trademarks of their respective holders.

**YOKOGAWA ELECTRIC CORPORATION**  
World Headquarters  
9-32, Nakacho 2-chome, Musashino-shi, Tokyo 180-8750, JAPAN

<http://www.yokogawa.com>



**YOKOGAWA CORPORATION OF AMERICA**  
**YOKOGAWA EUROPE B.V.**  
**YOKOGAWA ENGINEERING ASIA PTE. LTD.**  
**YOKOGAWA CHINA CO., LTD.**  
**YOKOGAWA MIDDLE EAST & AFRICA B.S.C.(c)**

<http://www.yokogawa.com/us/>  
<http://www.yokogawa.com/eu/>  
<http://www.yokogawa.com/sg/>  
<http://www.yokogawa.com/cn/>  
<http://www.yokogawa.com/bh/>