

# General Specifications

Model X069  
Input/Output Through Card

JUXTA

GS X069-01EN

## General

The X069 is a card whose inputs are combined with the outputs directly.

- A resistor can be built in to convert the current signal to a voltage signal.



## Model and Suffix Codes

Model \_\_\_\_\_ X069 / □  
Option \_\_\_\_\_

- /SN: No socket (with socket if not specified)
- /C0: Coating <sup>\*1</sup>
- /R10: With input resistance 10 Ohm <sup>\*2</sup>
- /R50: With input resistance 50 Ohm <sup>\*2</sup>
- /R100: With input resistance 100 Ohm <sup>\*2</sup>
- /R250: With input resistance 250 Ohm <sup>\*2</sup>
- /R500: With input resistance 500 Ohm <sup>\*2</sup>
- /R1000: With input resistance 1000 Ohm <sup>\*2</sup>

\*1 When the option code /C0 is specified, the CE marking is not applied.

\*2 Only one option code /Rxx can be specified.  
Note 1 "/C0" option: Polyurethane coating.  
The "/C0" option does not guaranteed the coating effect though it is expected that the corrosion resistance for electric circuit is reinforced. And it is not able to submit coating test data.

## Ordering Information

Specify the following when ordering.

- Model and Suffix Codes: e.g. X069

## Input Specifications

Input resistance: When the option code / Rxx, the following resistors are built in.

Option	Input resistance
/R10	10 Ω
/R50	50 Ω
/R100	100 Ω
/R250	250 Ω
/R500	50 Ω
/R1000	1000 Ω

Rated voltage/current: The following values, or the maximum allowable input value of the device connected to the output of X069, whichever is smaller.

Voltage input: Within ±30 V DC  
Current input: 50 mA DC or less

The option code /Rxx is as follows.

Option	Current input
/R10	200 mA DC or less
/R50	90 mA DC or less
/R100	63 mA DC or less
/R250	40 mA DC or less
/R500	28 mA DC or less
/R1000	20 mA DC or less

## Standard Performance

When the option code /Rxx.

- Accuracy rating: ±0.1% (when load resistance is ∞)
- Effect of ambient temperature change: ±0.025% for change of 10°C

## Environment Standard

EU RoHS directive: EN IEC 63000

(However, when the option code /C0 is specified, the CE marking is not applied.)

## Environmental Conditions

Temperature: -10 to 55°C (45°C or less for side-by-side close installation\*)

- \* If the previous model (style S3.xx earlier) is installed together, the ambient temperature is 0 to 40°C.

Humidity: 5 to 90% RH (no condensation)

Ambient Condition: Avoid installation in such environments as corrosive gas like sulfide hydrogen, dust, sea breeze and direct sunlight.

Magnetic field: 400 A/m or less.

Continuous vibration (at 5 to 9 Hz) Half amplitude of 3 mm or less (at 9 to 150 Hz) 4.9 m/s<sup>2</sup> or less, 1 oct/min for 90 minutes each in the 3-axis directions.

Impact: 98 m/s<sup>2</sup> or less, 11 msec, 3-axis 3 times each in 6 directions.

Altitude: 2000 m or less.

Installation location: Indoors

## Transport and Storage Conditions

Ambient temperature: -25 to 70°C

Temperature change rate: 20°C per hour or less

Ambient humidity: 5 to 95%RH (no condensation)

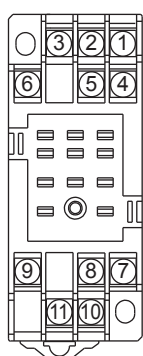
## ■ Mounting and Appearance

Construction: Compact plug-in type  
 Material: Modified polyphenylene oxide (casing)  
 Mounting method: Wall, DIN rail or dedicated VJ mounting base (VJCE) mounting  
 Connection method: M3 screw terminals  
 External dimensions:  
 76 (H) × 29.5 (W) × 124.5 (D) mm (including a socket)  
 Weight: Main unit: 70 g or less  
 Socket: 50 g or less

## ■ Accessories

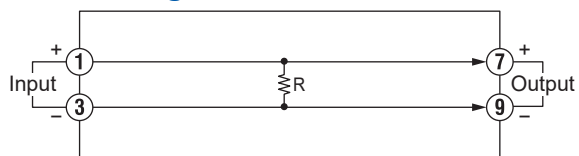
Tag number label: 1 sheet

## ■ Terminal Assignments



1	Input (+)
2	Do not use
3	Input (-)
4	Do not use
5	Do not use
6	Do not use
7	Output (+)
8	Do not use
9	Output (-)
10	Do not use
11	Do not use

## ■ Block Diagrams



Unused terminals should not be connected.  
 R: When the option code /Rxx is specified, the resistor is built in.

## ■ External Dimensions

