

Confocal Quantitative Image Cytometer Software Installation Manual

IM 80J01A03-01E

This manual describes how to install the CQ1 Software. Please read this manual carefully before using the software.

1. Software Installation Procedure

Different software installation procedures are required for new installations (offline use only) and for upgrades.

Note

The CQ1 Software can be installed on a PC other than the CQ1 control workstation and can view/analyze data measured by CQ1 (CQ1 Offline Software).

The Software is guaranteed to work only if the CQ1 Software is installed on a PC designated by Yokogawa. The CQ1 Software can be used on a different PC but it is not guaranteed that it will work. Minimum system requirements are as following. Because of RAM capacity, the analysis function may not work by a 32 bit OS PC. In case of using the analysis function on offline PC, it is recommended to use a 64 bit OS PC with the following specifications.

OS	64bit OS (Windows 7/10 Japanese/English)	32bit OS (Windows 7/10 Japanese/English)
Processor	3.60 GHz	3.40 GHz
RAM	16 GByte (32GByte ^{※1})	4 GByte
HDD (Built-in)	System drive (C:) 2 TB Data drive (D:) 3 TB	System drive (C:) 2 TB Data drive (D:) 3 TB
Display	1920 x 1200 and over ^{※2}	

※1 For the fast time-lapse function (100 fps), 32 GByte of memory is required.

※2 Do not change the resolution of display when using the CQ1 Software.

For new installations:

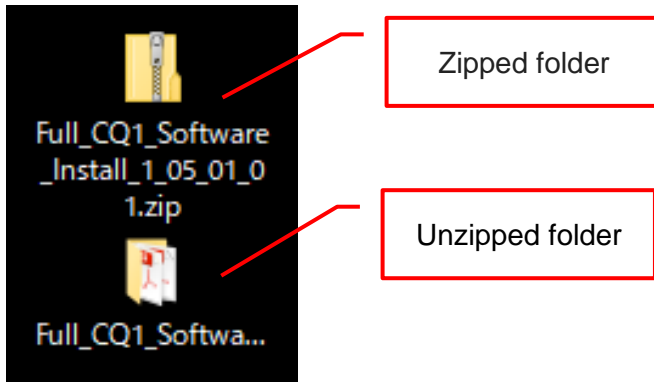
Perform procedure [1.1 New Installation](#) and [1.3 OS Confirmation](#) to [1.7 Unzip user's manual](#).

For Upgrades:

Perform procedure [1.2 Upgrading](#) and [1.3 OS Confirmation](#) to [1.7 Unzip user's manual](#).

1.1 New Installation

Unzip the downloaded zipped file "Full_CQ1_Software_Install_<Version>.zip" to the desktop.

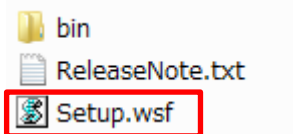


! CAUTION

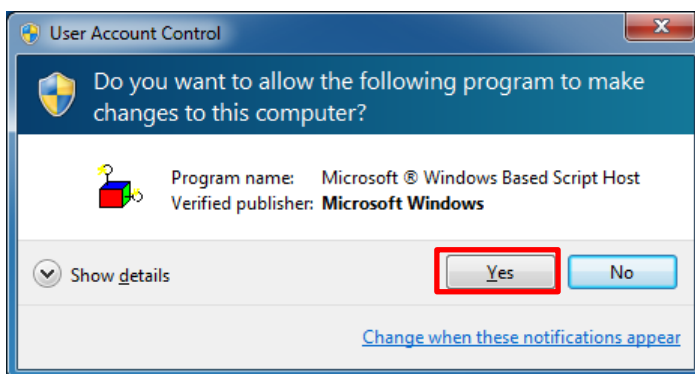
Note that unless you unzip the folder, the installer will not work properly.

1.1.1 Installation of Runtime for Offline Use

Open unzipped folder -> "1_OfflineBatch" and run "Setup.wsf".

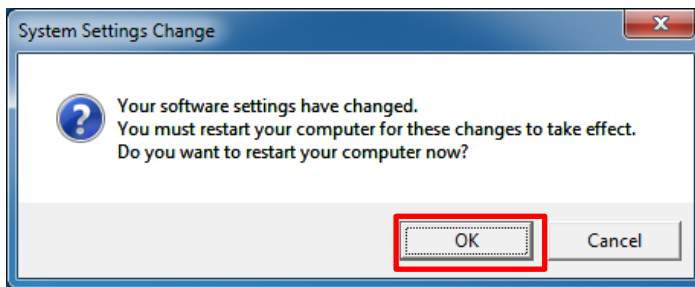


The following window is shown. Click "Yes"



It takes about 15 minutes for installation to finish.

After finishing installation, the following window is shown. Click “OK” and the PC will restart. If there are active windows open, save them and click “OK”.

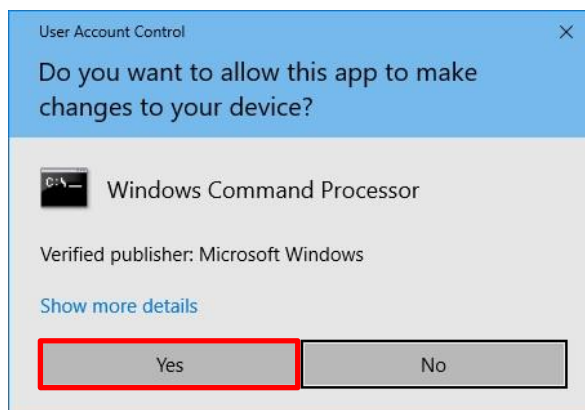


1.1.2 Installation of ImageJ

Open unzipped folder -> “4_ImageJ” and run “install_imageJ.bat”.

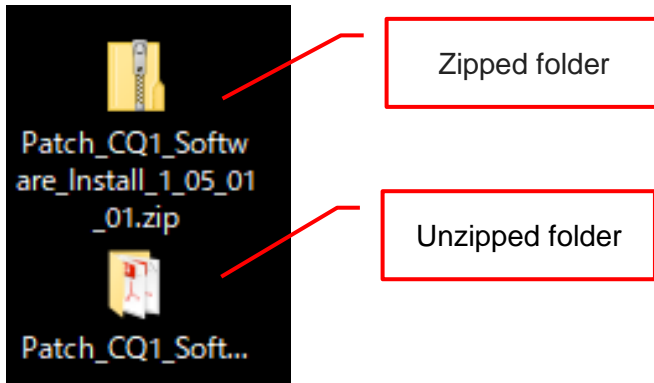


Following window is shown. Click “Yes”.



1.2 Upgrading

Unzip the downloaded file "Patch_CQ1_Software_Install_<Version>.zip" to a desktop.



CAUTION

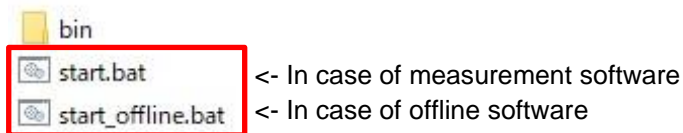
Note that unless you unzip the folder, the installer will not work properly.

1.2.1 Upgrade of runtime

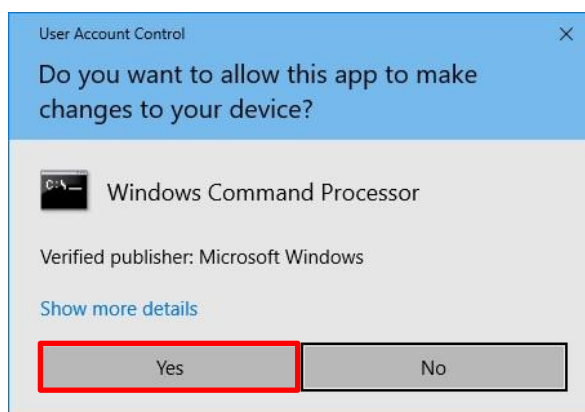
Open unzipped folder -> "2_UpdateBatch".

For measurement software, run "start.bat" to update runtime.

For offline software, run "start_offline.bat".



Following window is shown. Click "Yes".

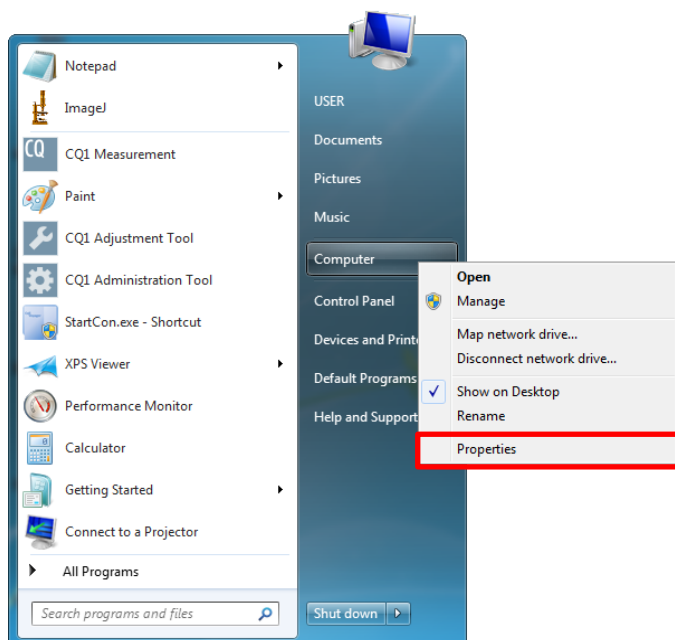


1.3 OS Confirmation

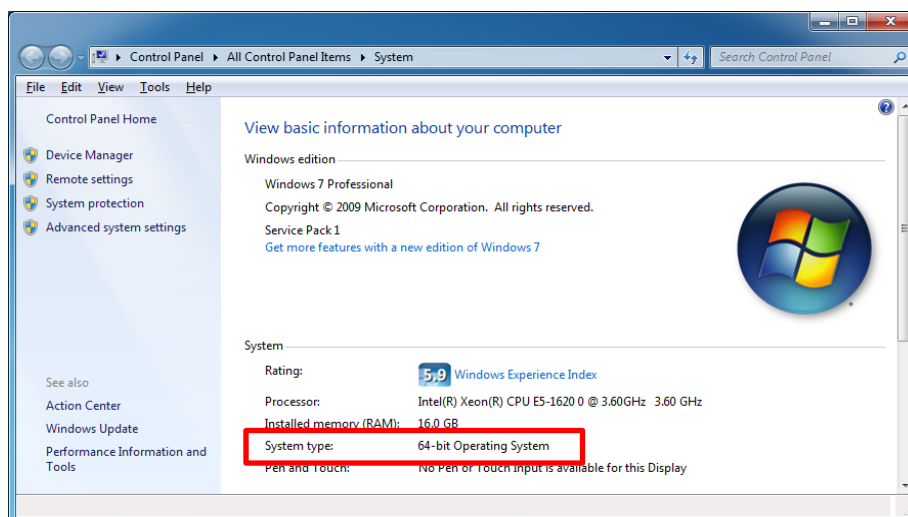
Confirm that OS of PC is 32 bit or 64 bit.

In case of Windows 7

Open Windows Start menu, right click on "Computer" and click "Properties".



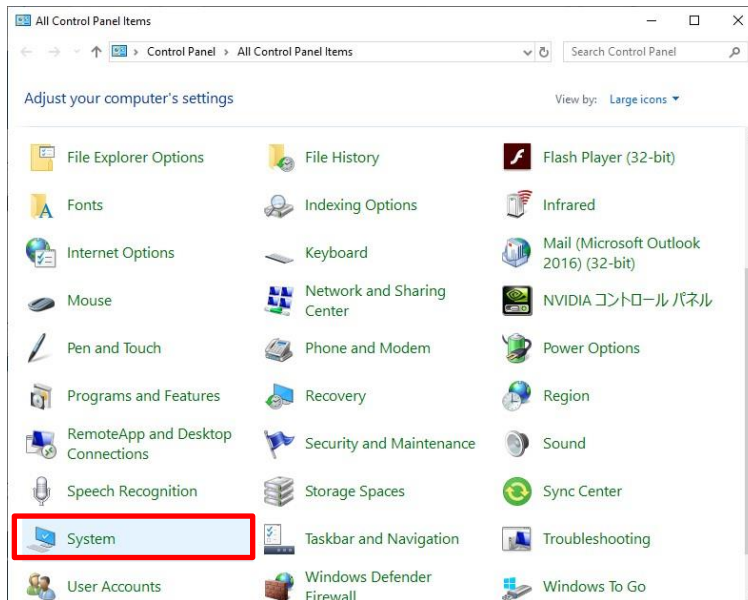
The following window is shown. Confirm that OS is 32 bit or 64 bit.



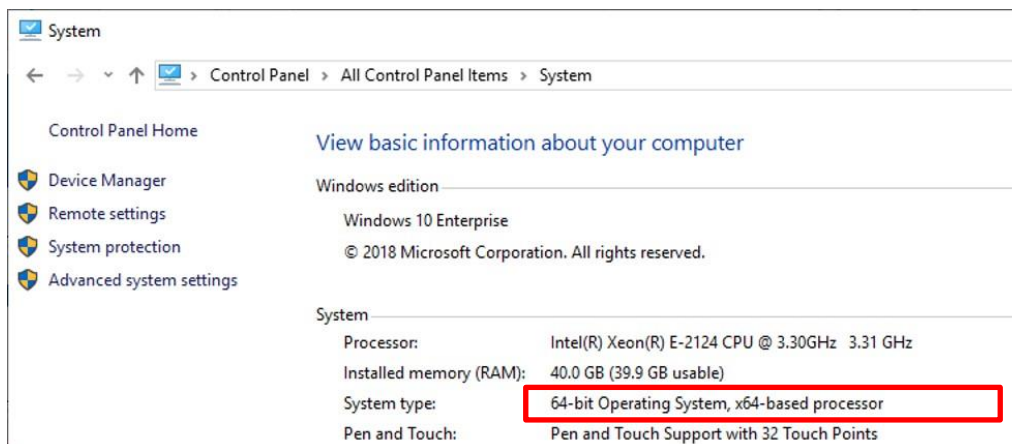
In case of Windows 10

Open Windows Start menu, right click on "Computer" and click "Properties".
Press "Windows" key + "R", input "control" and click "OK".

Select "System" at Control Panel.



Following window is shown. Confirm that OS is 32 bit or 64 bit.

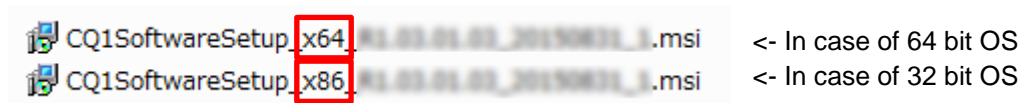


1.4 Installation of CQ1 Software

Open unzipped folder -> "3_CQ1Software".

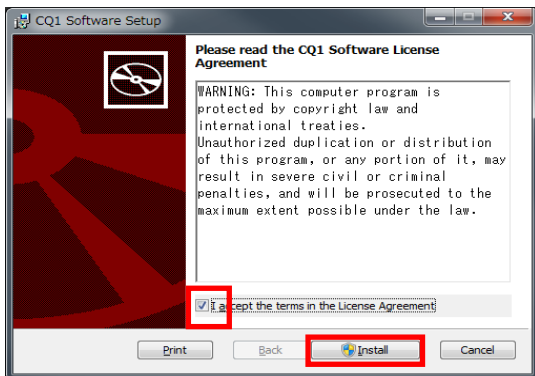
For 64 bit OS*, run "CQ1SoftwareSetup_x64***.msi" to install CQ1 Software.

For 32 bit OS, run "CQ1SoftwareSetup_x86***.msi".

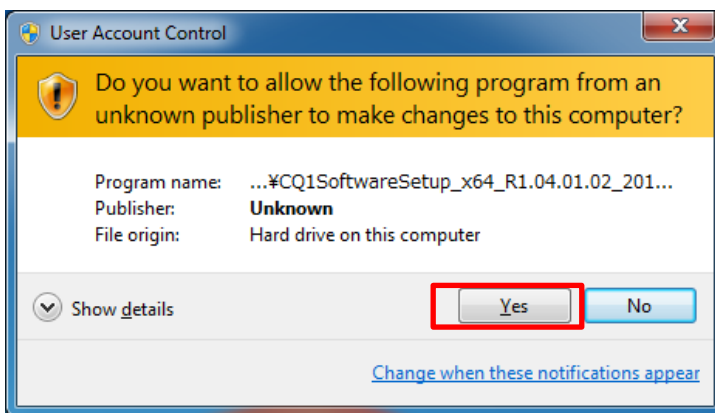


* OS of Workstation attached to CQ1 is 64 bit.

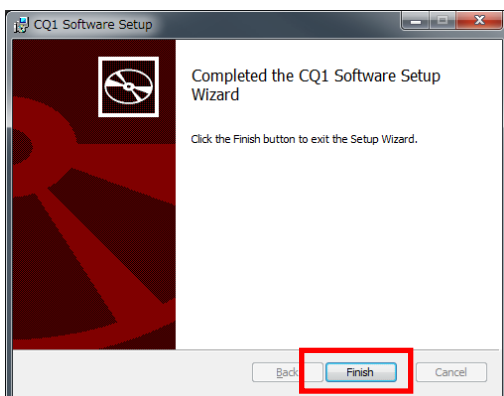
Read license agreement, check "I agree the terms in the License Agreement" and click "Install".



Following window is shown. Click "Yes".



Click "Finish".

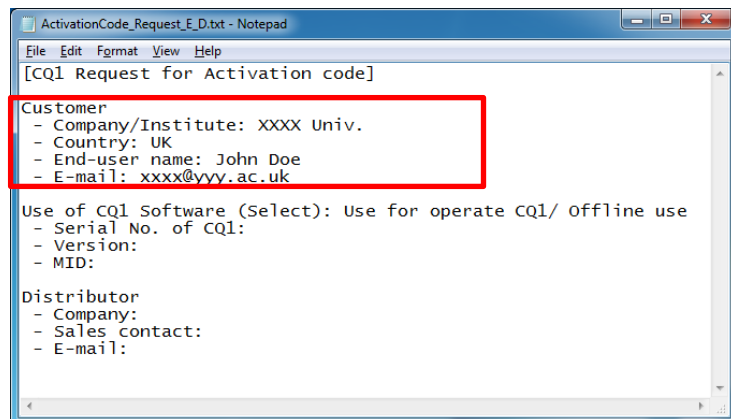


1.5 How to Request Activation code

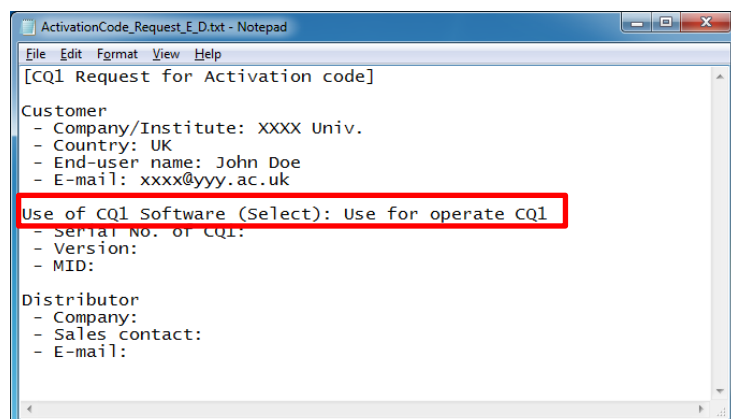
Open unzipped folder -> "5_req_activation_code" and open

“ActivationCode_Request_E_D.txt”.

Put in your information.



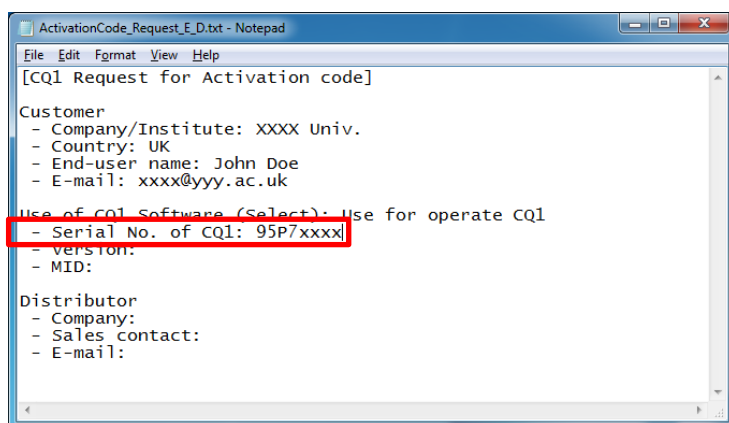
Select use of CQ1 Software (Use for operating CQ1 or Offline use).



Put Serial No. of the CQ1.

(It is also needed in case of Offline use.)

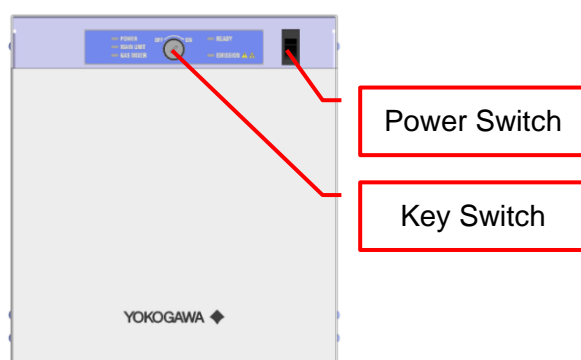




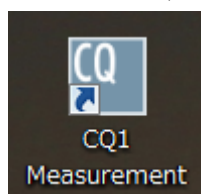
If upgrading the software for operating the CQ1, turn the power switch ON, then turn the key switch ON.

CAUTION

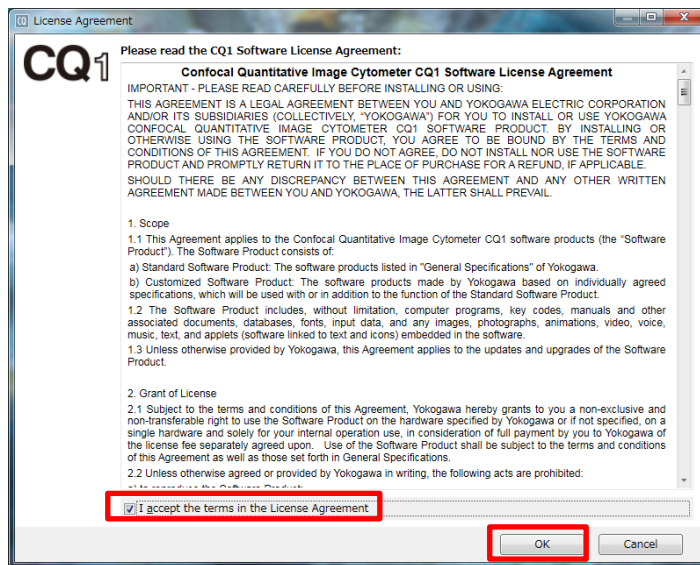
Immediately pull out the AC cord from inlet of equipment, if there is smoke coming out of the main unit, a foul smell, abnormal noises or any other abnormality.



Start the CQ1 Software.

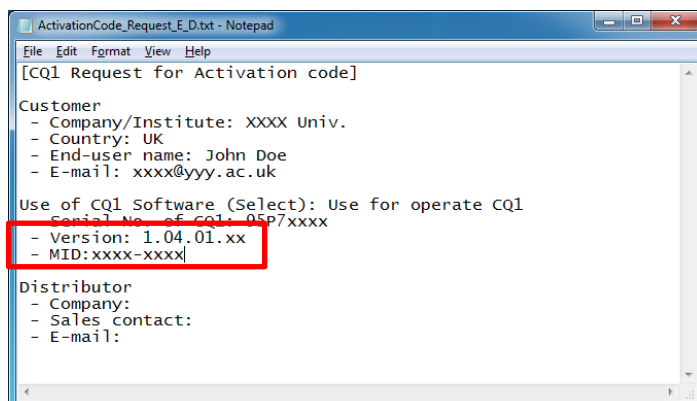
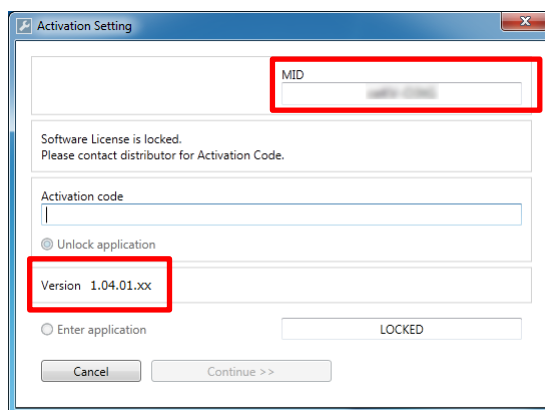


Please read the license agreement, check “I agree the terms in the License Agreement” and click “OK”.



The following window is shown.

Copy “Version” and “MID”.



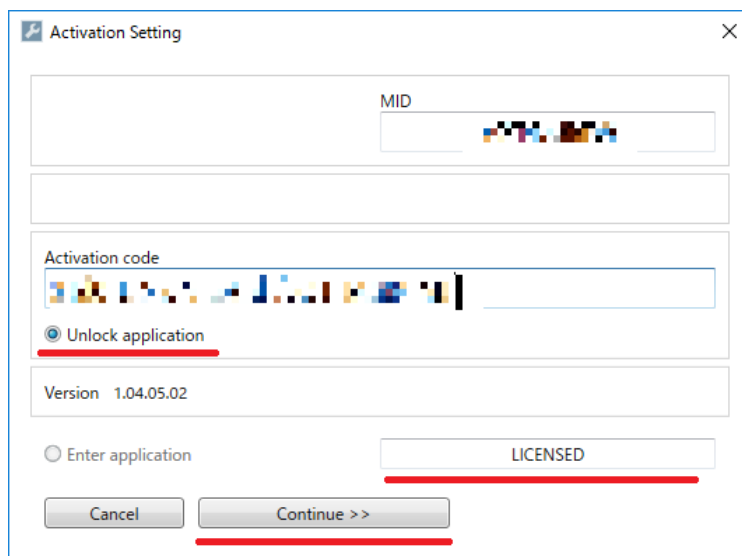
Note

In case of installation on a PC with wireless LAN, activate wireless LAN before this procedure.

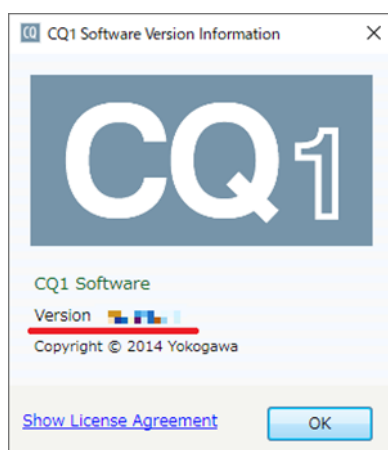
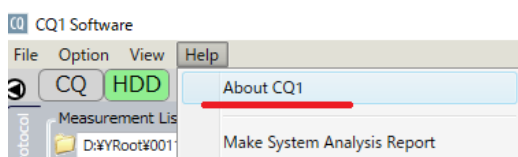
Copy the filled content to E-mail and send to Yokogawa or local dealer.

1.6 Input the activation code

Once you have received the activation code, input the code select “Unlock application” and “LICENSED” then,
click Continue.



Select Help→About CQ1 and to find the software version.

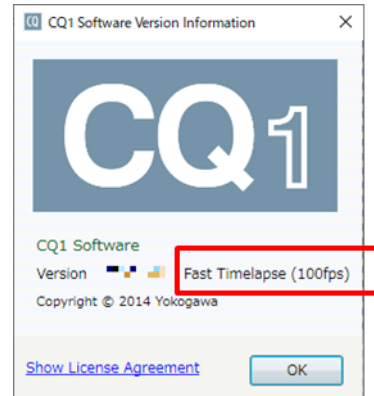


Also, if you have the fast time-lapse function, please make sure that the following is displayed.

Fast time-lapse function (20fps)

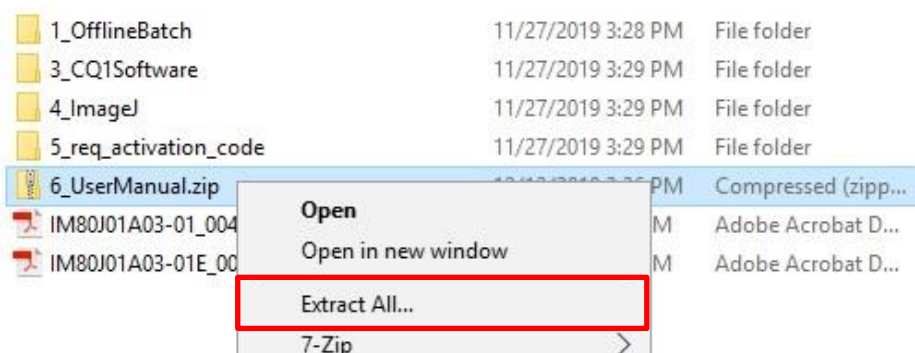


Fast time-lapse function (100fps)

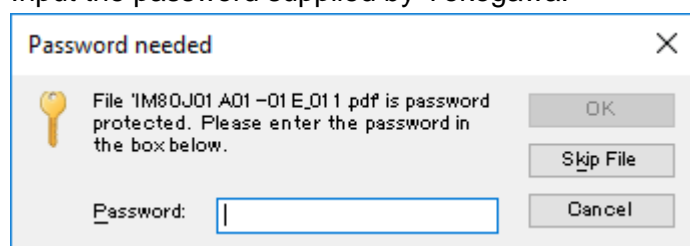


1.7 Unzip user's manual

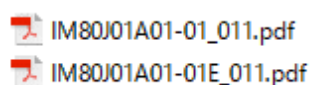
Open unzipped folder -> "6_UserManual.zip" and right click -> Extract All.



Input the password supplied by Yokogawa.



IM80J01A01-01E_011.pdf is the user's manual for latest version.



Trademarks

- Microsoft and Windows are registered trademarks or trademarks of Microsoft Corporation in the United States and other countries.
- In this document, registered trademarks or trademarks are not indicated by TM and ®.