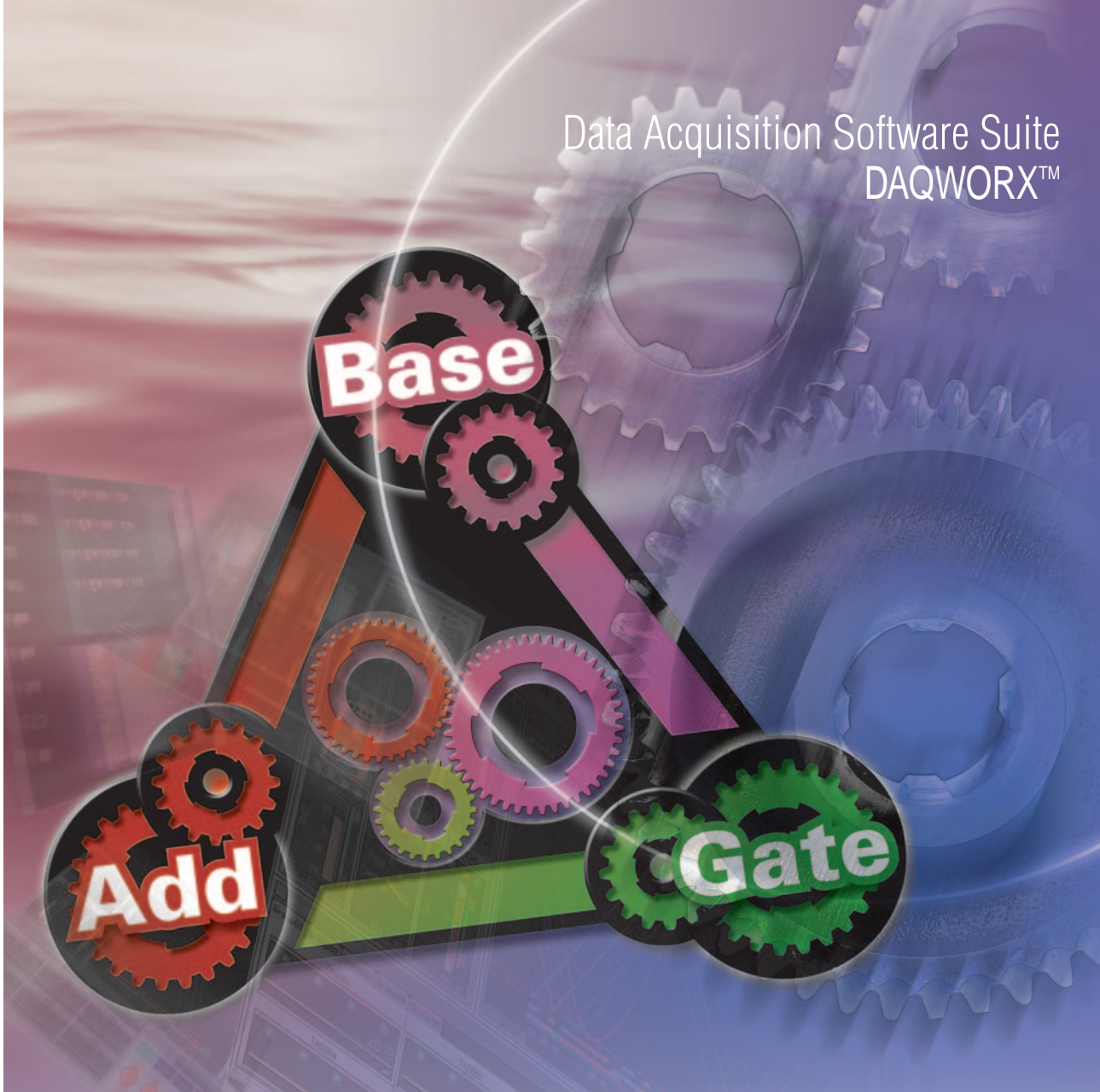


Data Acquisition Software Suite
DAQWORX™



DAQWORX™

Data Acquisition Software Suite

Integrated Data Acquisition Software Package

Bulletin 04L00L00-01E

www.yokogawa.com/ns/daqworx/

YOKOGAWA 

Connects a Wide Range of Devices

- Connect up to 32 of Yokogawa's major data acquisition instruments or controllers*
- * Certain models allow only up to 16 connections



Highly Reliable Data Logging Software

DAQLOGGER



- Build integrated acquisition and monitoring systems comprising diverse models, all without programming.

High Added-Value Software

- Expand acquisition and monitoring functionality with Add-on software.

Recorders

DAQSTATION
DX1000/DX2000, DX100/DX200,

CX1000/CX2000

GateR
Gate
μR10000/μR20000
Industrial Recorders

GateR
Gate
μR1000/μR1800/VR100/VR200
Industrial Recorders

MVAdvanced MV1000/MV2000
MobileCorder MV100/MV200

GateDXP
Gate
DX100P/DX200P
Pharmaceutical Model

Data Loggers

DARWIN Series

GateMX/MW
Gate
DAQMASTER
MX100/MW100

Controllers

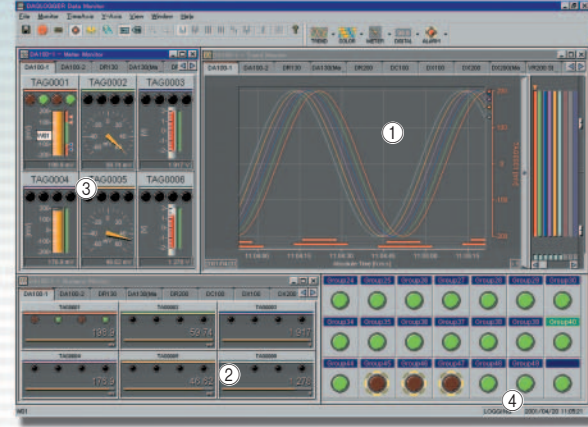
GateCONTROL
Gate
UT/UP Series
Temperature Controllers

GateVJ
Gate
JUXTA VJ Series
Signal Conditioners

GateMODBUS
Gate
POWERCERT Series
Power Monitors

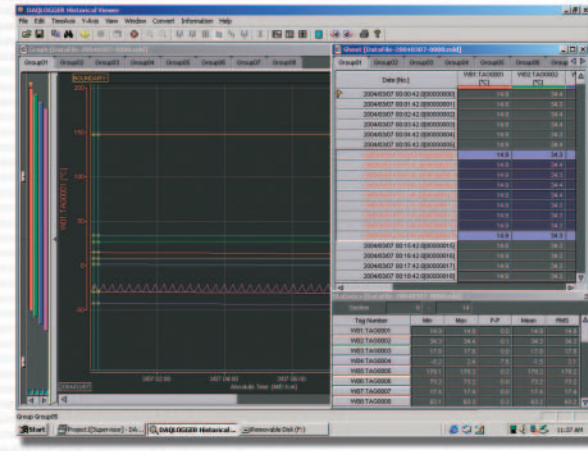
Measuring Instruments

GateWT
Gate
WT Series
Digital Power Meters



Data Logging and Monitoring

- High speed data acquisition and monitoring on up to 1600 channels (1 second intervals*)
 - Assign up to 50 groups of 32 channels for monitoring
 - A wide variety of monitor displays available
- ① Analog trend display ② Digital value display
③ Meter display ④ Alarm overview display
- * Performance may differ depending on number of units and channels connected, communication interface, and other factors.



Waveform Viewer and Assorted Utilities

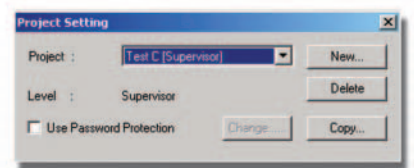
- Redisplay saved data in trend graphs or as numerical values
 - Statistical processing over a cursor-specified area
 - Writing of marks (arbitrary character strings) at specified positions
 - Search displayed data for alarms, marks, and other points
 - Printing and conversion of data to Excel and other formats
 - Online editing of data acquisition instrument settings *
- * Excluding instruments connected via Gate software.

More Reliable Continuous Acquisition

- Data file power failure protection function
- Communication disconnection automatic recovery function.

Save and Load Acquisition Setups

- Save acquisition setups as arbitrarily named "Projects", and easily switch between projects
- Password protection function prevents mishandling of data



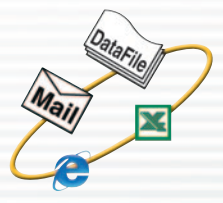
More Reliable Continuous Acquisition

- Events**
- Alarms
 - Fixed time intervals
 - Data file complete
 - Report complete
 - Disconnect/recovery
 - User operation
 - Data value

When an event is detected, a file is created and/or a previously specified process is executed.

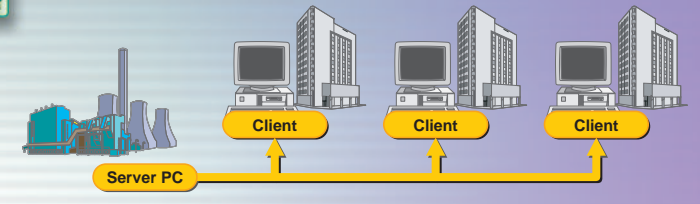
- Files**
- Data files
 - Report files
 - Image files
 - Messages

- Processes**
- E-mail transmission
 - FTP transmission
 - File conversion
 - HTML format output



DAQLOGGER Client

- Remote monitoring on up to 16 clients connected to DAQLOGGER
- Start and stop recording on DAQLOGGER remotely from the clients

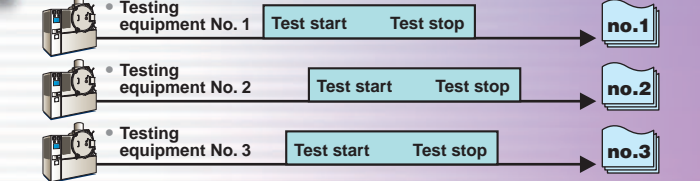


Monitor Sites Remotely



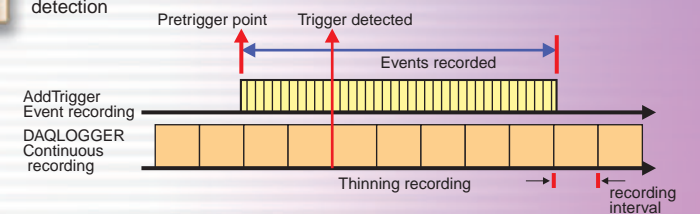
AddMulti

- Assign up to 50 groups of up to 32 ch each and start/stop recording on each group independently.
- Recording can be manually controlled or linked to measured levels or alarm conditions.



AddTrigger

- Start/stop recording based on trigger events set up in advance using alarm AND/OR conditions or specific times.
- Pretrigger function allows recording of data before and after the trigger detection

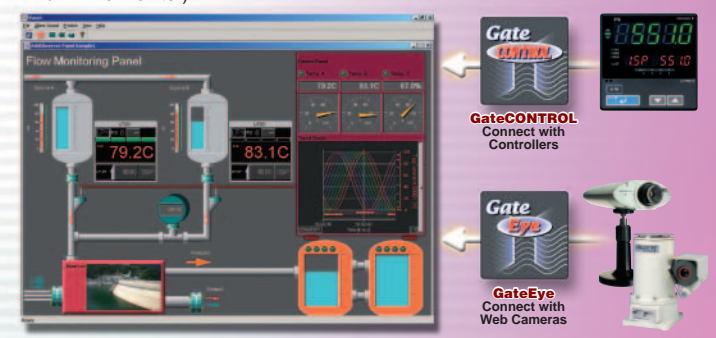


Start/Stop Data Acquisition by Group
Record Details around Detected Triggers



AddObserver

- Easily create monitor screens with a large selection of display objects (trends, meters, thermometers, etc.)
- Enables setting of SP values, switching between Run and Stop, and other operations on the connected controllers
- Displays images from Web cameras (JPEG still images)
- Enables simultaneous remote monitoring from up to 16 locations (using the Run-Time monitor)



Create Highly Intuitive Monitor Screens
Operate and Monitor on-site Controllers

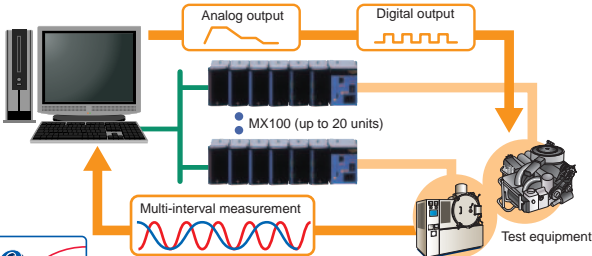
MXLOGGER

Data Acquisition Software for the DAQMASTER MX100



Main Functions

- Connects up to 20 MX100s for acquisition on up to 1200 channels collectively
- Operate test units with up to four types of analog waveform (pattern/manual) output and up to four types of contact manual output.
- Supports multi-interval operation (3 intervals) for highly efficient recording of a variety of signals from temperature to high speed phenomena.
- Taking advantage of the power of the PC, the software offers a variety of real time calculations (240 channels)
- Saved data can be redisplayed, printed, converted to Excel format, and manipulated in other ways.
- When combined with AddMulti/AddTrigger, you can perform trigger event recording and recording on individual groups at 24 ch/10 ms, 60 ch/100 ms, or 240 MATH ch/100 ms.
- With AddObserver, you can display data in X-Y graphs or alarm summaries.



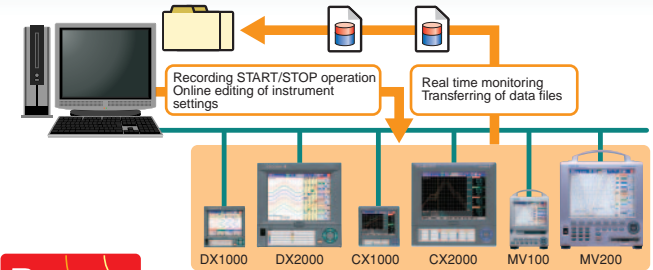
DAQEXPLORER

DAQSTATION/MobileCorder Management Software



Main Functions

- Centrally manage up to 16 units of the DAQSTATION or MobileCorder (with the exception of DX100P/DX200P and the "AS1" option of DX1000/DX1000N/DX2000)
- Recording START/STOP, real time monitoring
- Display data files in the instrument's internal memory or on external media in a list, and easily transfer them to a PC by dragging them with a mouse.
- Data files can be redisplayed, printed, converted to Excel format, and manipulated in other ways.
- Monitor internal memory at regular intervals, automatically transfer files, and automatically convert files to Excel and other formats.
- Online editing of instrument settings.
- With AddObserver, you can flexibly design your own easy-to-read monitor screens.



DataBrowser

File Searching and Waveform Display Software

- Search for data files on the PC by date, tag name, or other criteria
- Display found waveforms simultaneously regardless of the model or recording interval

Supported Models: DX100/200, CX, MV100/200, MX100Standard/MXLOGGER, DAQLOGGER/AddMulti/AddTrigger



DAQ32Plus

Data Acquisition Software for DARWIN

- High speed data acquisition (as fast as 0.5 seconds) on 360 channels (including MATH channels)
- Supports Ethernet/RS-232/RS-422/RS-485/GP-IB

PC System Requirements (* See the specification sheet for details)

- Operating System**
Microsoft Windows 2000 Professional, Windows XP Home Edition, or Professional (excluding x64 Edition), Windows Vista Home Premium or Business (excluding 64-bit editions), Windows 7 Home Premium or Professional (32-bit and 64-bit editions)
- Processor and Main Memory (for Desktop PCs)**
2000/XP: Intel Pentium 4, 1.6GHz or faster x64 or x86, 512MB or more
Vista: Intel Pentium 4, 3GHz or faster x64 or x86, 2GB or more
7: 32-bit version Intel Pentium 4, 3GHz or faster x64 or x86, 2GB or more
64-bit version Intel x64 processor that is equivalent to Intel Pentium 4, 3 GHz or faster, 2GB or more
- Hard Disk**
200 MB or more of free space (1GB or more recommended for saving measured data), recommended speed of 7200rpm or faster
- Graphic Board and Display**
A video card that is recommended for the OS and a display that is supported by the OS, has a resolution of 1024x768 or higher, and that can show 65,536 colors (16-bit, high color) or more.
- Other**
CD-ROM drive, sound source (sound board), speaker, A4 printer (color recommended), Ethernet or another of the various communication interfaces

List of License and Model Codes for Integrated Packages

Model/Suffix Code	Description	Note
WX101	DAQLOGGER	Integrated data acquisition software, connect up to 32units 1600ch, highest measurement interval of 1sec -Supported models->DAQSTATION DX/CX, MVAdvanced/MobileCorder MV, DARWIN DA/DC/DR, Chart recorder μR1000/1800, View recorder VR, Gate software
WX81	DAQLOGGER Client	DAQLOGGER/MXLOGGER Client Monitor
WX1*	GateDX-P GateR GateMX/MW GateCONTROL	DAQSTATION DX100P/DX200P (Style S4 or later) interface (connect up to 16 units) Industrial chart recorder μR1000/μR2000 interface (connect up to 16 units) DAQMASTER MX100/MW100 (for the MW100, firmware R2.11 or later only) interface (connect up to 32 units) Control product* interface (connect up to 32 units) -Supported models-> Temperature Controller UT100 series, Indicating Controller UT52A/55A/32A/35A/320/321/350/351/420/450/520/550/551/750, US1000, Program Controller UP350/351/550/750, Indicator with Alarms UM330/331/350/351, Signal Conditioner VJ UT/S7/A7/H7/P8/O7/Q8/X7, Digital Limit Alarms MV HK/RK/TK GateWT GateOPC GateMODBUS GateEye*
WX11	AddObserver	Add-on software for monitoring using user-created screens (with builder)
WX83	AddObserver Runtime	Add-on software for monitoring using user-created screens (run-time)
WX12	AddMulti	Data acquisition add-on software for recording by groups (32ch x 50groups)
WX13	AddTrigger	Data acquisition add-on software with various condition triggers
WX201	DataBrowser	Advanced file searching and waveform viewing software
Options /NCD	License sheet only	Product CD-ROM, manual CD-ROM, and Installation & Operation Guide not included

Note
Please read all relevant users manuals for correct and safe operation of instruments.

List of License and Model Codes for Product Specific Packages

Model/Suffix Code	Description	Note
WX102	DAQ32Plus	Data acquisition software for DARWIN (single connection)
WX82	DAQ32Plus Client	DAQ32Plus Client Monitor
WX103	MXLOGGER	Data acquisition software for DAQMASTER MX100 (connect up to 20 units)
WX81	DAQLOGGER Client*	DAQLOGGER/MXLOGGER Client Monitor
WX104	DAQEXPLORER	Software for DAQSTATION DX/CX (with the exception of DX100P/DX200P and the "AS1" option of DX1000/DX1000N/DX2000), MobileCorder MV (connect up to 16 units)
WX11	AddObserver	Add-on software for monitoring using user-created screens (with builder)
WX83	AddObserver Runtime	Add-on software for monitoring using user-created screens (run-time)
WX12	AddMulti*	Data acquisition add-on software for recording by groups (32ch x 50groups)
WX13	AddTrigger*	Data acquisition add-on software with various condition triggers
WX201	DataBrowser	Advanced file searching and waveform viewing software
Options /NCD	License sheet only	Product CD-ROM, manual CD-ROM, and Installation & Operation Guide not included

List of License and Model Codes for Upgrades

Model/Suffix Code	Description	Applicable models*
WX101UP	DAQLOGGER upgrade	DAQLOGGER R3/R4/R5/R6 -> R7 latest release
WX102UP	DAQ32Plus upgrade	DAQ32Plus R9/R10 -> R11 latest release
WX103UP	MXLOGGER upgrade	MXLOGGER R1 -> R2 latest release
WX104UP	DAQEXPLORER upgrade	DAQEXPLORER R1/R2/R3 -> R4 latest release
WX11UP	AddObserver upgrade	DAQOBSERVER/AddObserver R1/R2/R3 -> R4 latest release
WX12UP	AddMulti upgrade	AddMulti R1 -> R2 latest release
Options /NCD	License sheet only	Product CD-ROM, manual CD-ROM, and Installation & Operation Guide not included

* Restrictions on the number of hardware connections and the acquisition interval apply when using MXLOGGER in combination with AddMulti, AddTrigger, and DAQLOGGER Client. For more information, please visit our Web site (<http://www.yokogawa.com/ns/>) or contact your nearest Yokogawa representative.

- Free Revision Upgrade**
Customers with the latest version of the license (see table below) can upgrade to the latest release (obtain a "revision upgrade") of the software through one of the following methods.
• Through the latest edition of the DAQWORLD CD-ROM obtained when purchasing other additional software. Otherwise, you can also purchase the CD-ROM medium only (model B9911WB).
• Download the upgrade from the Product Registration members page on our company's Web site (<http://www.yokogawa.com/ns/daqworld/>).

List of versions eligible for the free revision upgrade*
DAQLOGGER/DAQLOGGER Client: R7, Gate software: All, DAQ32Plus/DAQ32Plus Client: R11, MXLOGGER: R2, DAQEXPLORER: R4, AddObserver/AddObserver Runtime: R4, AddMulti: R2, AddTrigger: R1, DataBrowser: R1

Yokogawa, DAQWORLD, DAQSTATION, DAQMASTER, and MobileCorder are registered trademarks of Yokogawa Electric Corporation. Microsoft, Windows, Windows Vista, and Excel are registered trademarks or trademarks of Microsoft Corporation. Lotus is a registered trademark of International Business Machines Corporation. Intel and Pentium are registered trademarks of Intel Corporation. OPC is a trademark of OPC Foundation. Modbus is a registered trademark of Schneider Automation Inc. Other company/product names are registered trademarks or trademarks of their respective companies.

*as of June 4, 2010



YOKOGAWA ELECTRIC CORPORATION
Network Solutions Business Div./Phone: (81)-422-52-7179, Fax: (81)-422-52-6619
E-mail: ns@cs.jp.yokogawa.com

YOKOGAWA CORPORATION OF AMERICA
YOKOGAWA EUROPE B.V.
YOKOGAWA ENGINEERING ASIA PTE. LTD.

Phone: 800 888 6400, Fax: (1) 770 254 0928
Phone: (31)-88-4641000, Fax: (31)-88-4641111
Phone: (65)-62419933, Fax: (65)-62412606

Subject to change without notice.
[Ed : 06/b] Copyright ©2006
Printed in Japan, 001(KP)

NetSOL Online Sign up for our free e-mail newsletter
www.yokogawa.com/ns/

RS-19E

Subject to change without notice.
All Rights Reserved, Copyright© 2006, Yokogawa Electric Corporation.