

Monitoring Steam Trap Conditions

Wide Area Monitoring System

Are you having any problems like this?

Equipment Steam Trap

Problems Difficulty of assessing conditions of steam traps located throughout the site



- ▶ Steam traps located in high places or hazardous areas are inspected infrequently or not at all. As a result, steam may continue to leak, resulting in energy loss.
- ▶ Because inspecting steam traps requires expertise and equipment, it is difficult to catch problems during normal patrol inspections.



Easy to start using! Wide Area Monitoring System solves remote monitoring issues



Facilities that exist in a wide area can be integrated and managed through remote monitoring.

The cloud can be used to reduce time and costs, and to efficiently build monitoring systems.



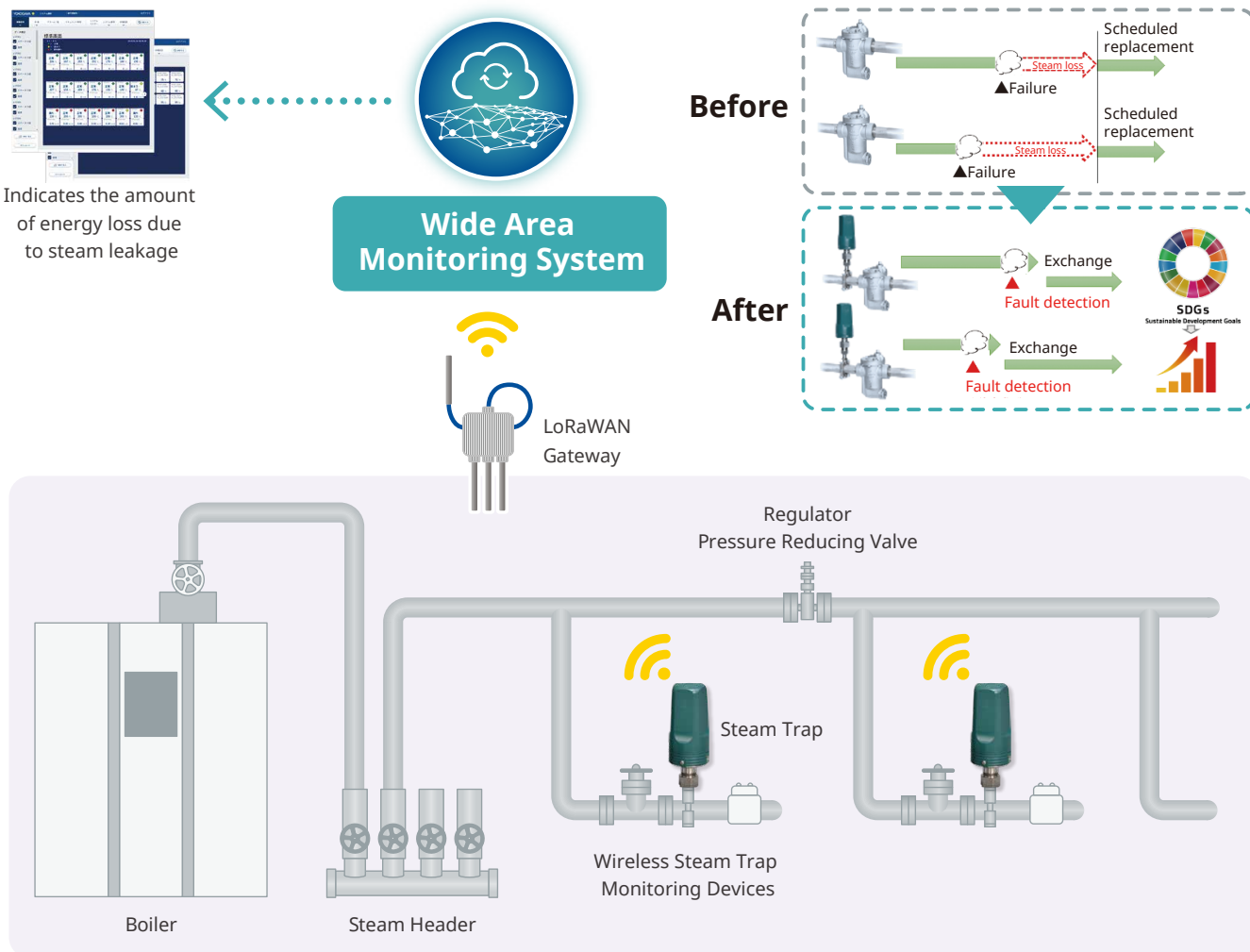
Value through problem solving

- ✓ By applying monitoring modules to steam traps in high places or dangerous areas that are difficult to inspect, it is possible to locate previously unnoticed steam leaks and perform maintenance to stop energy loss.
- ✓ Steam trap failures can be captured remotely on a monitoring screen without the use of specialized knowledge and equipment.



Proposed System Configuration

Wireless steam trap monitoring devices are installed in the plant to detect steam leaks and blockages. Detection data is aggregated in the Wide Area Monitoring System, and the status of the steam traps is monitored. This makes it possible to quickly identify which steam traps are malfunctioning, and to replace them promptly.



► Devices

Category	Product	Notes
Cloud	Wide Area Monitoring System	Data acquisition interval: 60 min. or more, 50 measured data
Communication	Wireless Communication Connection License	
Comm. devices/data acquisition	LoRaWAN Gateway	
Sensor	Wireless Steam Trap Monitoring Device	

► Industries All industries that use steam traps, including petroleum, chemical, electric power, pharmaceutical, food, and paper pulp

Co-innovating tomorrow, OpreX and the product names of Yokogawa Electric Corporation mentioned herein are registered trademarks or trademarks of Yokogawa Electric Corporation. In addition, the company names and product names used herein are the registered trademarks or trademarks of their respective companies.

Yokogawa Electric Corporation
World Headquarters

9-32, Nakacho 2-chome, Musashino-shi, Tokyo 180-8750, JAPAN

<https://www.yokogawa.com/>

Represented by:

wam_formoreinfo@cs.jp.yokogawa.com
www.yokogawa.com/wams/

Subject to change without notice.

All Rights Reserved, Copyright © 2025, Yokogawa Electric Corporation.

[Ed:01/d]

Printed in Japan, 504(AZ)

YOKOGAWA



Co-innovating tomorrow™