

Easy Configuration and Monitoring

Liquid Analyzer FLXA202

FieldMate Application Note

FLEXA FieldMate

Model FLEXA:

YOKOGAWA Liquid Analyzer FLXA202 has an Online Sensor Wellness checking function for predictive maintenance. In the FLXA202 Human Machine Interface (HMI), FLXA202 offers easy touch screen operation.



Sensors with self-diagnostics capabilities:

Continuous measurement of sensor impedance, asymmetric potential, and slope, and continuous monitoring for electrode contamination/damage, burnout, and decline in measurement liquid level.
(ex. pH Analyzer)

Display of sensor status and estimated maintenance time:

Save the latest five calibration results and estimate the future maintenance and calibration times.

FieldMate:

The detailed diagnostic information can be confirmed without going to field by using FieldMate.



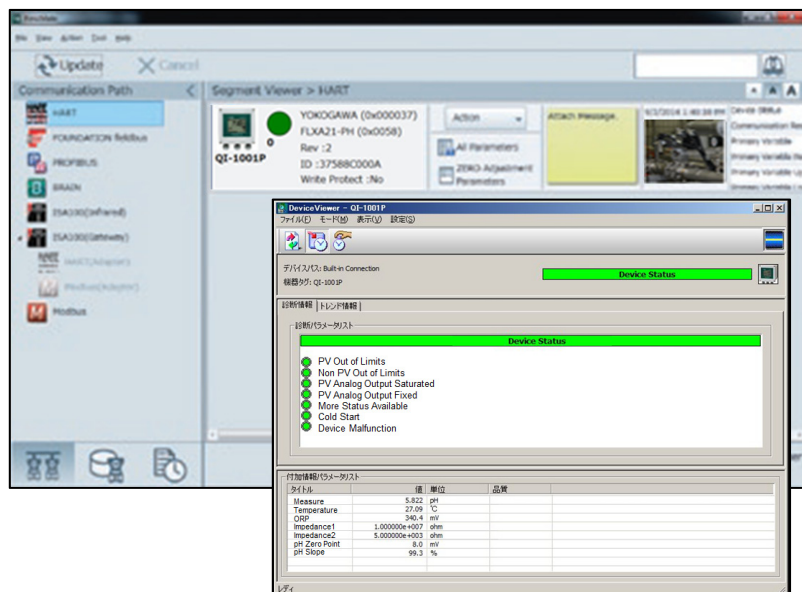
FieldMate is a PC based configuration tool that performs numerous tasks, including initial setup of devices, daily maintenance, troubleshooting, and configuration backup for device replacement. FieldMate provides the easy operation for FLXA202 in quality monitoring room. FieldMate can monitor the diagnostic information of FLXA202.

The screenshot shows a software window titled '診断所情報' (Diagnostic Information) and 'トレンド情報' (Trend Information). It contains two main sections: '診断所パラメータリスト' (Diagnostic Site Parameter List) and '付加情報パラメータリスト' (Additional Information Parameter List).

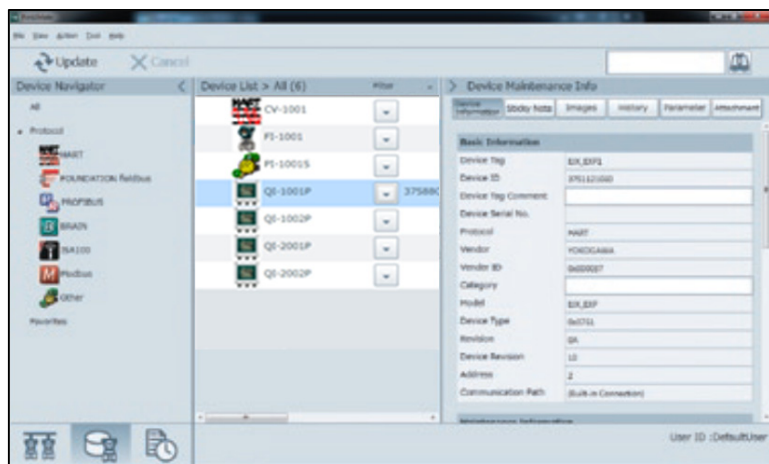
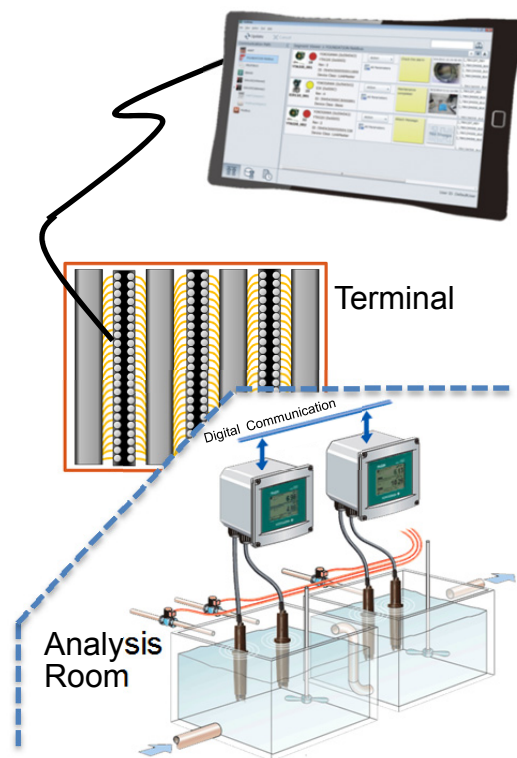
タイトル	値	単位
Measure	5.822	pH
Temperature	27.09	°C
ORP	340.4	mV
Impedance1	1.000000e+007	ohm
Impedance2	5.000000e+003	ohm
pH Zero Point	8.0	mV
pH Slope	99.3	%

DeviceViewer

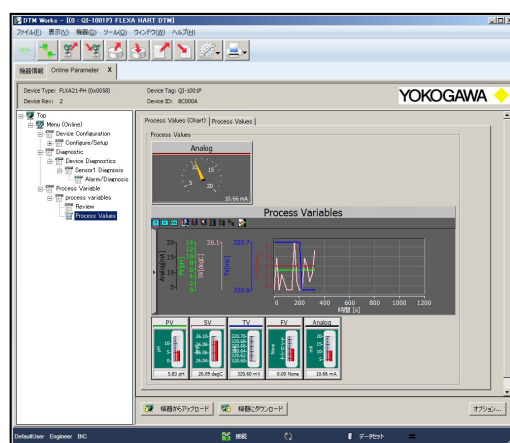
FLXA202 and FieldMate:



Easy connection and operation



Easy, useful memo & image display function



Easy configuration

Yokogawa Electric Corporation

YOKOGAWA ELECTRIC CORPORATION

9-32, Nakacho 2-chome, Musashino-shi, Tokyo 180-8750, Japan

YOKOGAWA CORPORATION OF AMERICA

12530 West Airport Blvd, Sugar Land, Texas 77478, USA

YOKOGAWA EUROPE B.V.

Euroweg 2, 3825 HD Amersfoort, The Netherlands

YOKOGAWA ENGINEERING ASIA PTE. LTD.

5 Bedok South Road, Singapore 469270, Singapore

YOKOGAWA MIDDLE EAST & AFRICA B.S.C.(c)

P.O. Box 10070, Manama, Building 577, Road 2516, Busaiteen 225, Muharraq, Bahrain

Represented by:

Subject to change without notice

All Rights Reserved. Copyright © 2016, Yokogawa Electric Corporation