

Leading Edge Controller

Specially for F3SP71-4S / F3SP76-7S

WideField  (release 3)

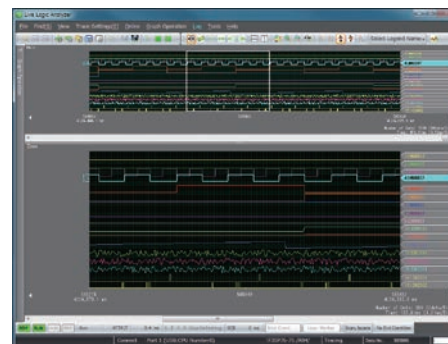
New
Feature

FA-M3
VITESSE™

Live Logic Analyzer

(for WideField3 R3.01 or later)

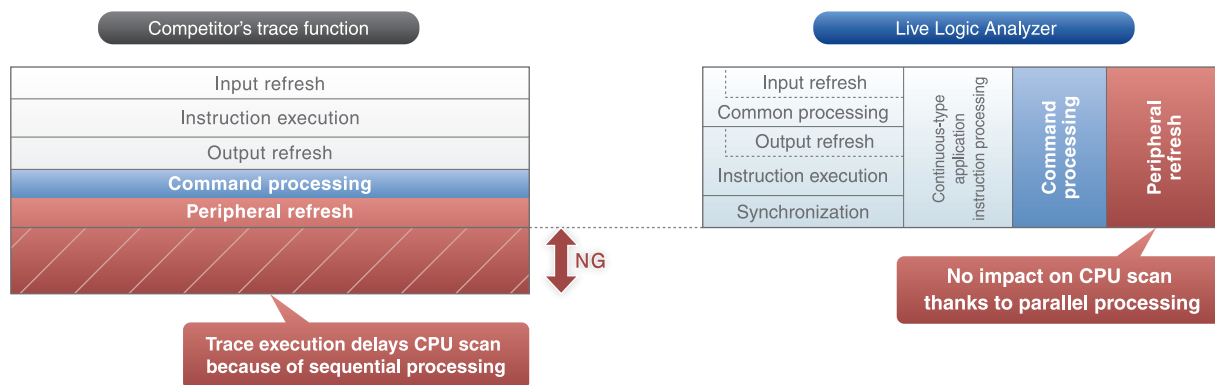
User-friendly engineering feature to leapfrog your debugging



Multi-point tracing of the control state (device values) in high-speed applications.
Real-time capture of the operating state in production applications
enables efficient detection of any control timing difference or delay.

■ Traces actual production performance because of fast CPU processing, CPU-scan-independent tracing and parallel peripheral processing

- ▶ The trace runs with minimal impact on the CPU scan and thus reflects actual production performance.
- ▶ USB and Ethernet peripheral processing run in parallel independently without affecting the CPU scan.



■ Concurrent multi-point tracing slashes debug time!

Find it!

Fix it!

Check it!

- ▶ Up to 96 data points (64 relays and 32 registers) can be traced concurrently.
- ▶ Even advanced-function I/O devices can be traced.
- ▶ User marker can be defined for any condition to easily detect any desired phenomenon.
- ▶ Once started, trace result can be displayed anytime, allowing concurrent program debugging even during tracing.

Live Logic Analyzer Introduction movie released on FA-M3 website (www.yokogawa.com/itc/)!

Bulletin 34M06Z91-20E

www.yokogawa.co.jp

■ Powerful HMI

► Easy registration, configuration and operation

Registration 1

Simply drag-and-drop from a ladder program or copy-and-paste from a common tag name definition.

Registration 2

The tracing devices are registered instantly!

Operation 1

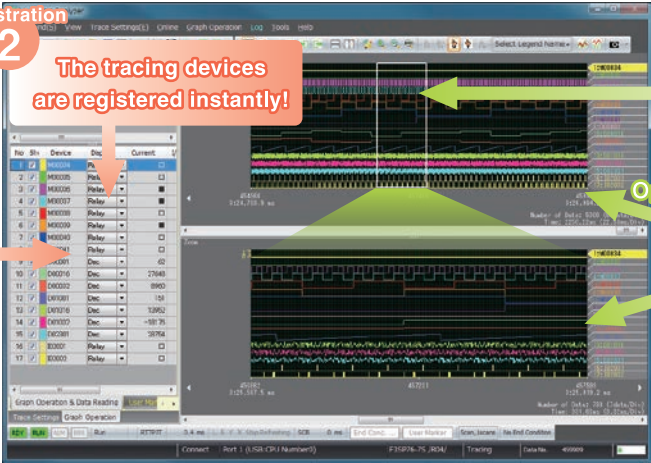
Zoom in on any trace area on the main window to see an enlarged display in a separate frame.

Operation 2

Split a window horizontally or vertically, or display two windows concurrently.

3

Overlap waveforms or display a cursor simply using a mouse.

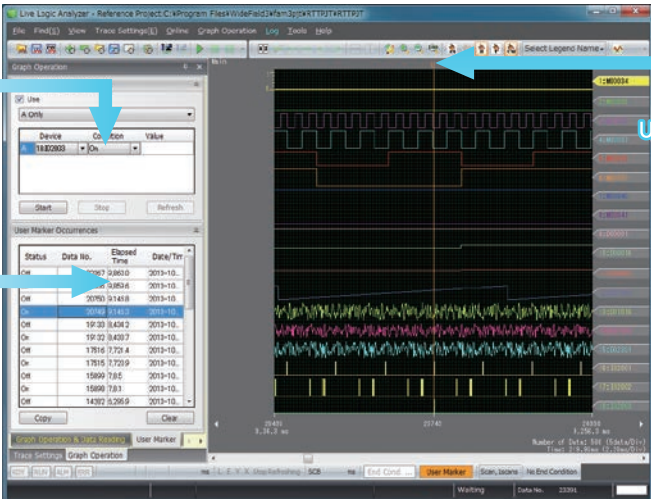


More! Trace results can be saved as a screen image or in CSV format.

► User marker enables pin-point search of massive trace data

User marker 1

Define the user marker condition as a specified device state.



User marker 2

A mark is displayed at every trace position where the user marker condition is true.

User marker 3

A user marker history log is also displayed.

More! You can instantly jump to and center the display on any user marker or any user-defined cursor



- For proper and safe use of this product, read the user manual thoroughly.
- If faults of this product are expected to result in accidents or losses, install additional external protection and/or safety circuits.
- If the product is to be used in applications which may directly affect or threaten human lives and safety, such as railway facilities, aviation and space navigation, medical equipment or transport equipment, please contact Yokogawa's sales office.

- FA-M3V is a registered trademark of Yokogawa Electric Corporation (application pending).
- The product and company names that are referred to in this document are trademarks or registered trademarks of their respective companies.

vigilantplant.®

The clear path to operational excellence

SEE
CLEARLY

KNOW
IN ADVANCE

ACT
WITH AGILITY

VigilantPlant is Yokogawa's automation concept for safe, reliable, and profitable plant operations. VigilantPlant aims to enable an ongoing state of Operational Excellence where plant personnel are watchful and attentive, well-informed, and ready to take actions that optimize plant and business performance.

YOKOGAWA ELECTRIC CORPORATION
PLC Gr.
Control Instruments Promotion Dept.
International Sales Promotion Center
IA PF Business Headquarters
2-9-32, Nakacho, Musashino-shi, Tokyo 180-8750, JAPAN
Phone: 81-422-52-5616
Fax: 81-422-52-9802

Represented by: