



OpreX™ Asset Operations and Optimization

Exaquantum/Batch

Batch Information System for Analysis and Reporting

Exaquantum/Batch is an intelligent S88 based Batch Information System. It provides analysis and reporting facilities that collect, store and display current and historical data from batch production, equipment and recipe viewpoints.

This enables easy user access to batch information for decision support, production planning, production scheduling, analysis, process improvement, quality and legislative compliance purposes.



Business Benefits

- Faster time to market for new products
- Reduced material costs
- Increased productivity and plant utilisation
- Better information for improved decision-making
- Powerful data analysis and reporting capabilities leading to quicker batch approval
- Supports Six Sigma programs

Operational Benefits

- Strong batch reporting platform where batch, master recipe and equipment data for each batch is available for any report
- Automatic data collection is used to minimise set up time and engineering with Yokogawa Batch control systems
- Batch record keeping, reporting, monitoring and data analysis for improving batch production
- High performance and value
- Industry standards compliance: Based upon S88 standards and OPC Batch specification
- Support for use in applications subject to FDA 21 CFR Part 11

Exaquantum/Batch is a valuable tool in batch-orientated industries, allowing users to focus on Key Process Performance Indicators. It provides a web browser based, analysis and reporting user interface, to deliver valuable batch-based information in support of process improvement initiatives.

Interface with OPC Enabled Control Systems

Many field proven interfaces are available for S88 and non-S88 based control systems using OPC.

Production improvement by Six Sigma Analysis

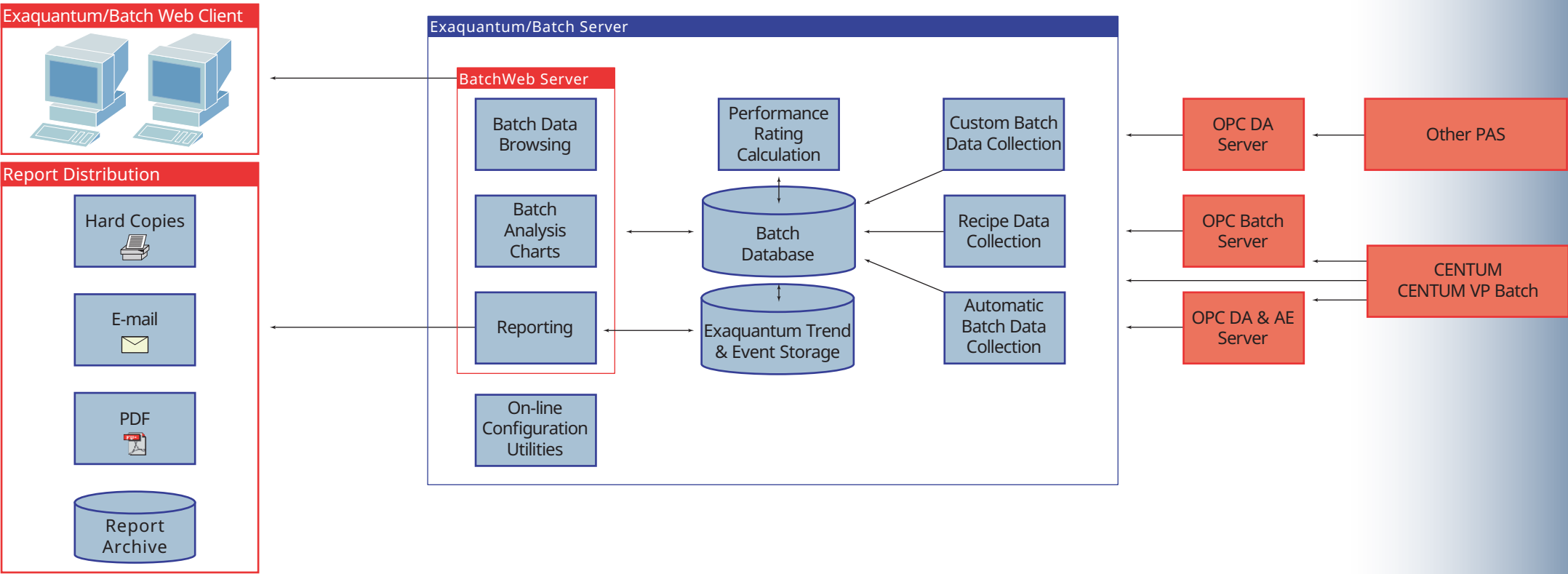
Analyses cycle time variance and quality as batch Key Performance Indicators to identify problems in the production processes, allowing improvements to be made.

Comprehensive Reporting Tool

The comprehensive Exaquantum/Batch reporting package provides Excel-based flexible reporting which incorporates data from batches, equipment, master recipes and trend values along with the associated alarms and events.

FDA 21 CFR Part 11

21 CFR Part 11 option is also available if required. To provide Electronic Record/ Electronic Signature functionality.



Functional Overview

BatchWeb

BatchWeb is a web-based user interface similar to a web portal. On-screen menu selections allow viewing and analysis of different sets of continuously updated batch, equipment and master recipe data, from both Exaquantum/PIMS and Exaquantum/Batch databases, using standard charts and tables. There are a number of related views which may be selected:

Production View: A table of useful plant information covering the recent batches

Batch View: A list of batch records. Using filters, batch records may be displayed for any time period

Equipment View: A list of units available in the Exaquantum/Batch database

Master Recipe View: A list of the master recipes archived in the Exaquantum/Batch database

Report View: A list of reports that may be run. A Report Archive view is also available that provides a list of the Exaquantum/Batch reports that have been generated

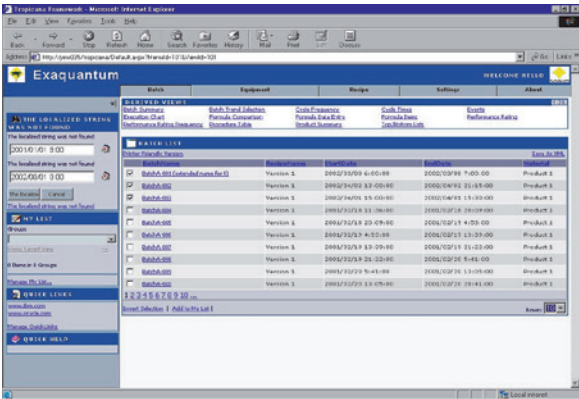


Key Features

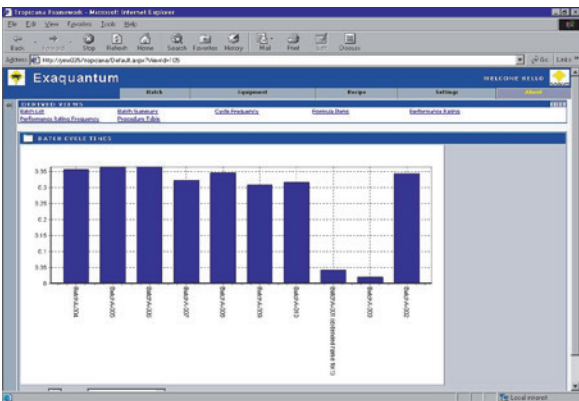
The key features of Exaquantum/Batch are:

'Out of the box' integration with Yokogawa's CENTUM VP Batch control systems, providing immediate usability and benefits, based on the S88 standard, without complex engineering and database configuration

- Standard analysis of data providing:
 - Automatic calculation and charting of cycle times for each batch
 - Automatically generated charts showing unit utilisation
 - Comparison of batches to peer groups
 - Automatically calculated performance ratings for each batch
 - A powerful tool for sorting and comparing batch history data
-

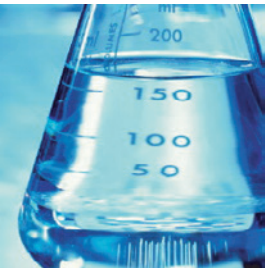


Exaquantum/Web in Run Time



Exaquantum/Web Chart in Run Time

- A customisable web-based user interface providing:
 - Batch, master recipe and equipment data accessible via BatchWeb
 - Ad-hoc web access to data without custom display generation
 - Secure data storage with minimal client administration
- Optional 21 CFR Part 11 compliant functionality through the use of electronic records and signatures.



Exaquantum Family

Exaquantum/Batch is an extension of the Exaquantum Plant Information Management System (PIMS), which allows long term, time-lined collection and analysis of data from automated control systems.

Exaquantum facilitates user-contextual presentation and management of operational information, providing a link from production level information systems into Enterprise Resource Planning (ERP) systems and Manufacturing Resource Planning (MRP) systems to create truly 'enterprise-wide' solutions.

OpreX™ Through the comprehensive OpreX portfolio of products, services, and solutions,
Yokogawa enables operational excellence across the enterprise.

**Yokogawa Electric Corporation
World Headquarters**

9-32, Nakacho 2-chome, Musashino-shi, Tokyo 180-8750, Japan
<https://www.yokogawa.com/>

Yokogawa Corporation of America

12530 West Airport Blvd, Sugar Land, Texas 77478, USA
<https://www.yokogawa.com/us/>

Yokogawa Europe B. V.

Euroweg 2, 3825 HD Amersfoort, The Netherlands
<https://www.yokogawa.com/eu/>

Yokogawa Engineering Asia Pte. Ltd.

5 Bedok South Road, Singapore 469270, Singapore
<https://www.yokogawa.com/sg/>

Yokogawa China Co., Ltd.

Room 1801, Tower B, THE PLACE, No.100 Zunyi Road,
Changning District, Shanghai, China
<https://www.yokogawa.com/cn/>

Yokogawa Middle East & Africa B. S. C. (c)

P.O. Box 10070, Unit A7, Building 1320, Road 1516, Block 115, BIIP,
Al-Hidd, Kingdom of Bahrain
<https://www.yokogawa.com/bh/>

Trademarks

The names of corporations, organizations, products and logos herein are either registered trademarks or trademarks of Yokogawa Electric Corporation and their respective holders.

Subject to change without notice.

All Rights Reserved. Copyright © 2003, Yokogawa Electric Corporation

Visit our website at:

[https://www.yokogawa.com/solutions/solutions/asset-operations-and-optimization/
data-historian/batch-data-historian-exaquantum-batch/](https://www.yokogawa.com/solutions/solutions/asset-operations-and-optimization/data-historian/batch-data-historian-exaquantum-batch/)



Represented by:

Printed in Japan, 403(KP) [Ed : 08/b]