



OpreX™ Profit-driven Operation

# Quality Stabilization System

Digital Plant Operation Intelligence / Operation Evaluation System

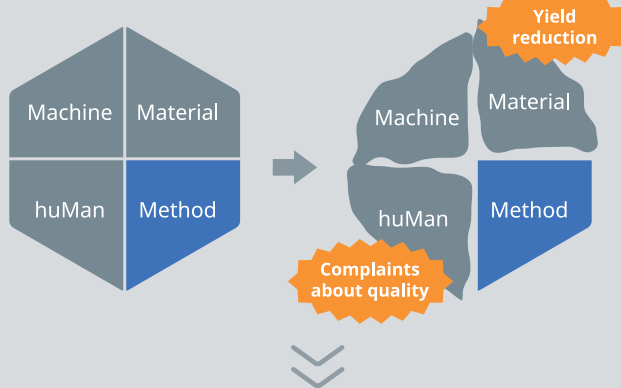


# Don't you want to find a "new normal" in manufacturing?

Is this happening to you?

## Complaints about quality or yield reduction due to environmental changes

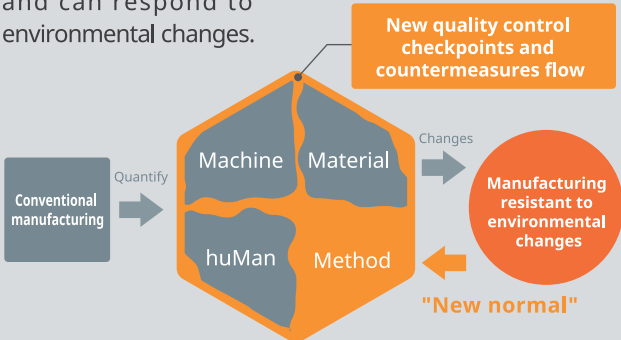
Up until now, we have maintained our quality levels due to our on-site capabilities such as knowledge and experience at the sites. However, the balance of manufacturing (Material, Machine, and huMan) is already falling apart due to changes in the environment surrounding the manufacturing sites, and countermeasures against complaints about quality and yield reduction have reached their limits.



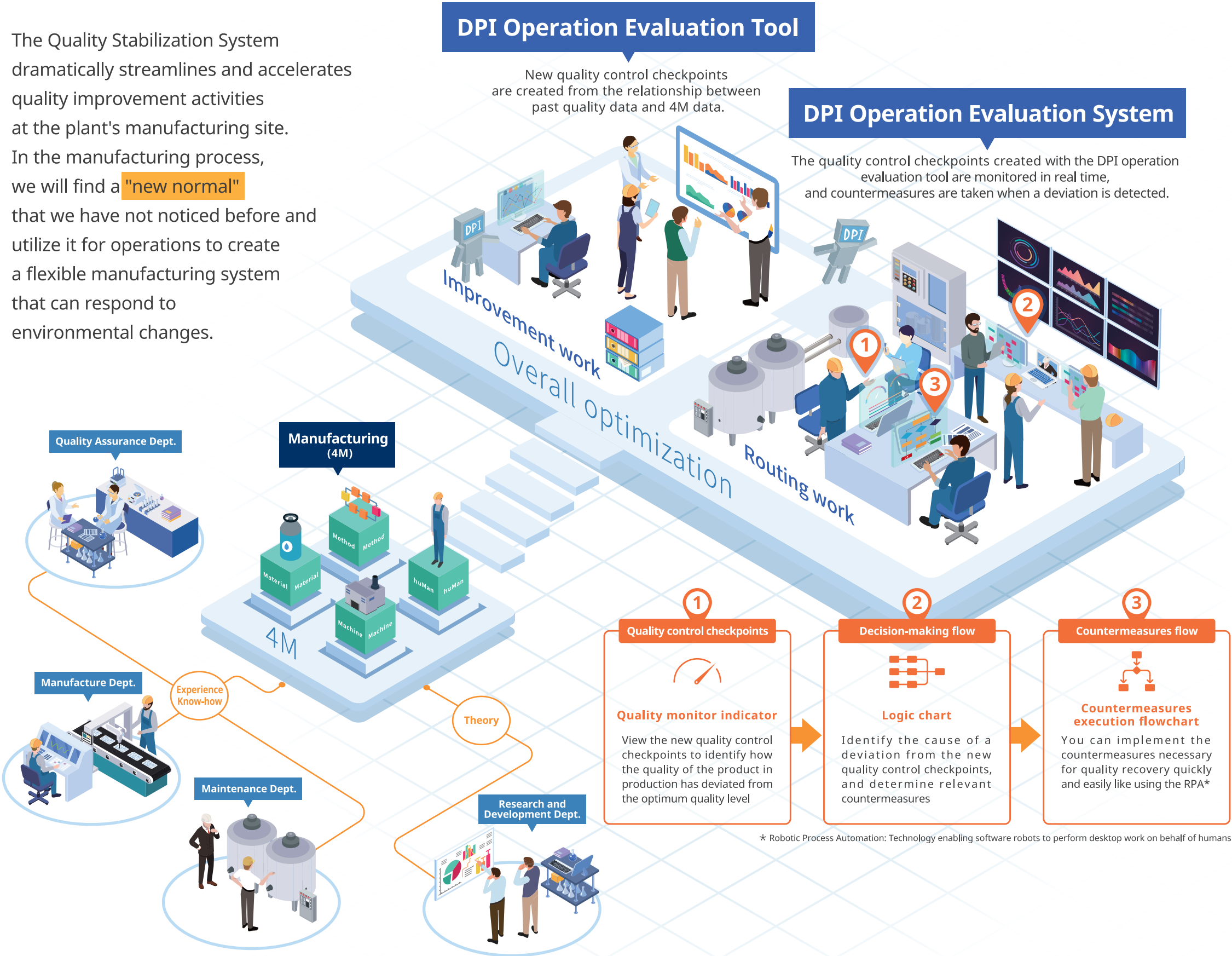
How can you solve them?

## Unravel the current state of manufacturing and quantify the situation

It is not possible to easily change Material, Machine, and huMan. Deal with the issues by Method, that is, the methods of operations. Unravel the current state of manufacturing (4M) and quantify the situation. Based on this information, create new quality control checkpoints and a countermeasures flow, and add them to the existing quality control checkpoints. We will create a manufacturing system that is resistant to and can respond to environmental changes.



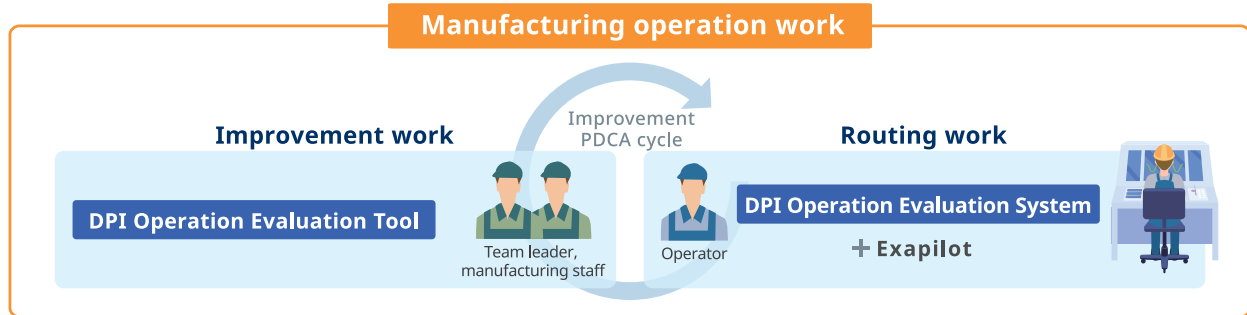
The Quality Stabilization System dramatically streamlines and accelerates quality improvement activities at the plant's manufacturing site. In the manufacturing process, we will find a **"new normal"** that we have not noticed before and utilize it for operations to create a flexible manufacturing system that can respond to environmental changes.





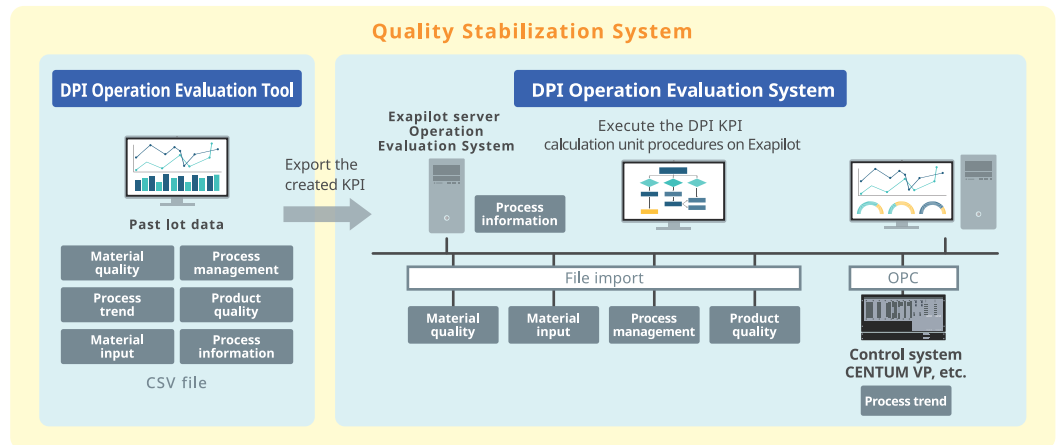
## Positioning of Quality Stabilization System

The Quality Stabilization System, which consists of the operation evaluation tool and the operation evaluation system, covers the entire improvement PDCA cycle related to the customer's manufacturing operation work.



### System Configuration

The DPI Operation Evaluation Tool adds and defines KPI calculation unit procedure for DPI to Exapilot, which is Yokogawa's operation efficiency improvement package, and displays the calculation results obtained here as Exapilot component for DPI to the clients of each system.



**In order to create a flexible manufacturing system, it is necessary to improve the awareness and operations of everyone involved in manufacturing in addition to systematization.**

Yokogawa also provides a range of solutions such as education and consulting to support these.

DPI Solution



DPI Consulting



OpreX™

Yokogawa achieves operational excellence by providing products, services, and solutions based on the OpreX comprehensive brand that cover everything from business management to operations.

**Yokogawa Electric Corporation**  
**Yokogawa Solution Service Corporation**

Website



Yokogawa Electric Corporation's brand names and product names described in this document are registered trademarks or trademarks of Yokogawa Electric Corporation.

Other company names and product names described in this document are registered trademarks or trademarks of respective companies. The contents of this document are subject to change without notice.

All Rights Reserved. Copyright © 2021, Yokogawa Electric Corporation

Contact information

[Ed : 01/d] Printed in Japan, 101 (KP)

**YOKOGAWA**



Co-innovating tomorrow™