

User's Manual of CA71 Communication Software for Handy Calibrator CA71

■ For Safety Use

- This Software is a dedicated communication application for our Handy Calibrator CA71 and cannot be used for any product other than the CA71.
- Before connecting the RS232 communication cable (Model 91017) to the CA71, please switch off the calibrator and disconnect the lead cables.

■ General Specifications

- Infrared Data Communication Adapter

Product Name: Communication Cable (RS232)

Model: 91017

- CA71 Communication Software

◆PC Operating Environment

PC	: PC/AT Compatible Machine
OS	: Windows95/98, WindowsMe, Windows2000, WindowsNT4.0, WindowsXP (Service Pack may be required in some cases.)
CPU	: Pentium100MHz or faster recommended
Memory	: 32MB Min.
Hard Disk	: More than 10MB free space is necessary 3.5 inch FD (for installation on FD)
EXCEL	: EXCEL97, EXCEL2000, EXCEL2002

◆Main specifications of CA71 Communication Software

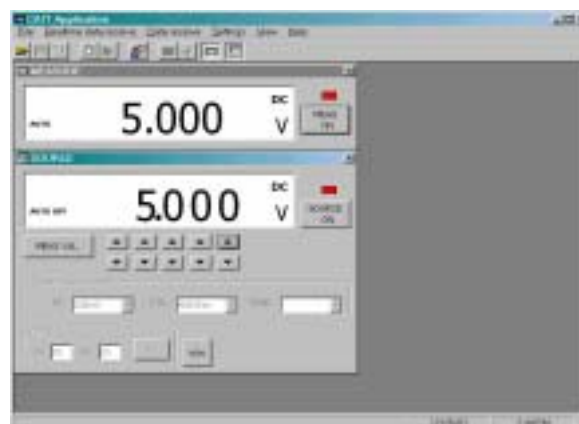
The communication function of CA71 Communication Software enables users to set output values of the CA71 on a PC. However, the range for generation/measurement should be selected using the rotary switch on the calibrator.

The following operations can be executed while monitoring the CA71 on the PC.

Data Receiving	: Memory-mode data or real-time data can be received from the CA71.
Data Transmission	: Setting value of generation can be set and sent to the CA71.
Data Processing	: The data can be saved and forwarded to EXCEL. A trend graph is created and shown on the PC screen.

■ Application Program Startup

Click the **Start** button and then click **Program** to start the **CA71 Communication Software**. CA71 Communication Software window appears on the screen.



■ Command Buttons



Read saved data out of hard disk



Forward data to EXCEL



Start receiving real-time data from CA71



Set interval and period for real-time data



MEASURE Window ON/OFF



Save data



Setup for real-time data receiving



Receive memory-mode data from CA71



Set graph scale



SOURCE Window ON/OFF

■ Data Receiving

● Connecting the CA71 to PC

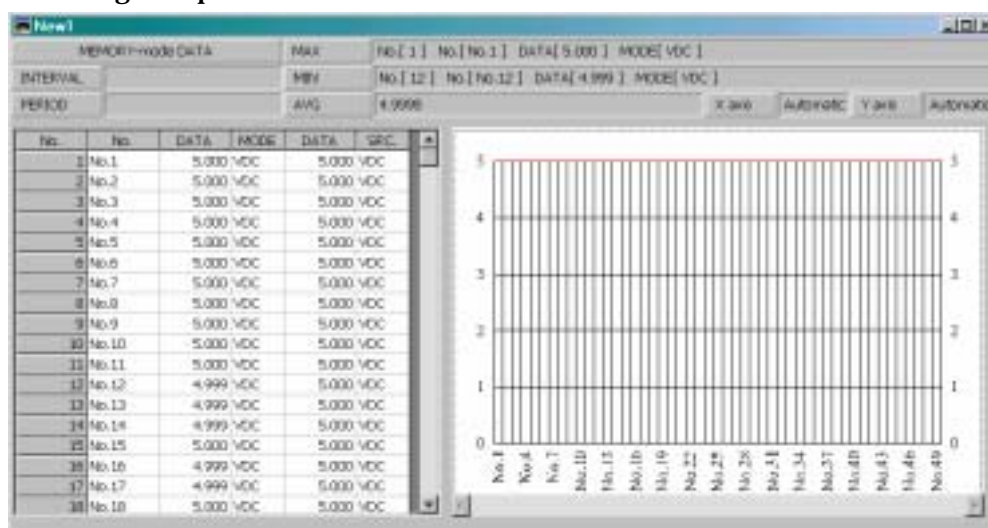
Connect the CA71 to PC using a RS232C communication cable. The cable should be connected to a D-sub 9-pin serial port on the PC.

● Setup for Connection Port

Select **Setting** and then **Communication Port** in CA71 Communication Software, and specify the port number you are using.

● Data Receiving

Switch on the CA71 and execute the command, Real-time Data Receiving or Memory-mode Data Receiving of captured data.

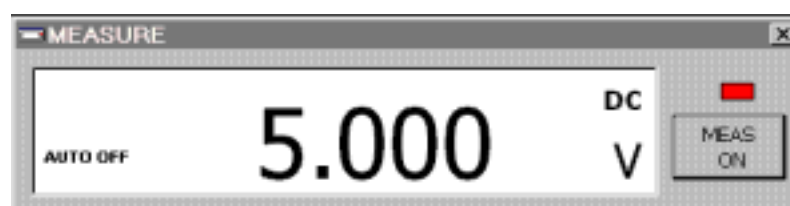


Note:The maximum number of Receiving Data should be 32767 data.

If exceeded the above number, it will stop receiving data automatically.

● MEASURE Window

Measured value by the CA71 can be displayed on the PC screen. MEASURE Window ON/OFF is controlled by the command button on tool bar.



■ Data Transmission

● SOURCE Window

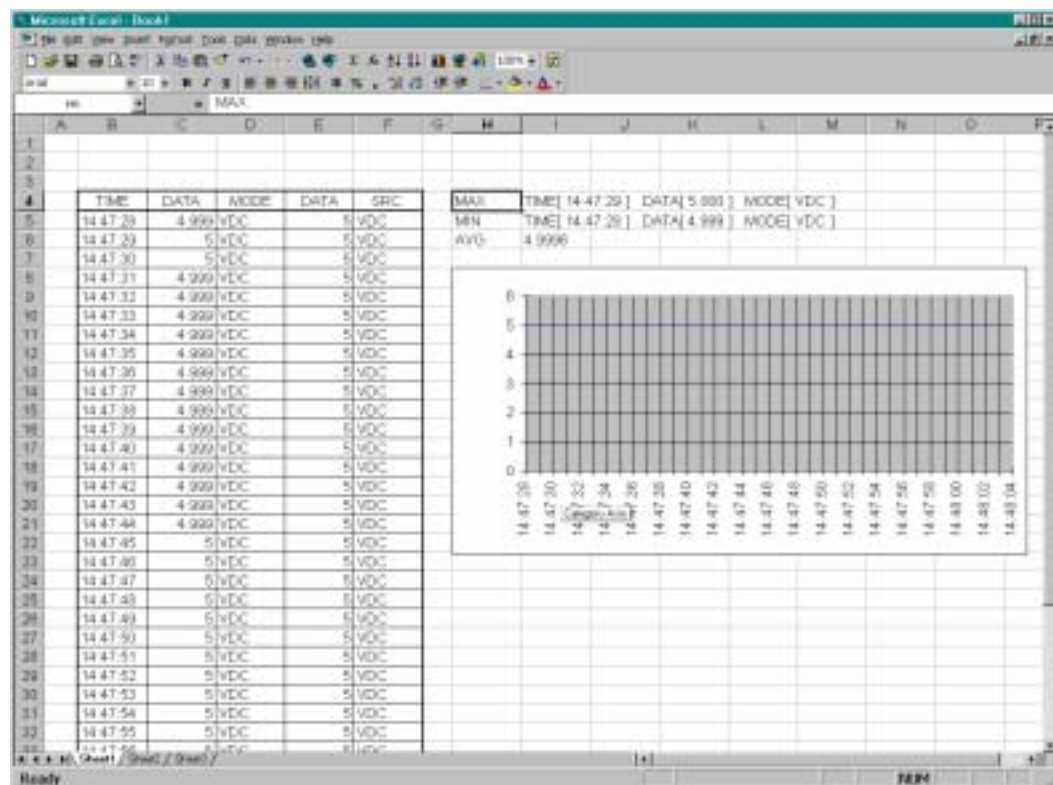
Output value of the CA71 can be displayed on the PC screen. SOURCE Window ON/OFF is controlled by the command button on tool bar. All settings for output value can be made in this window.



■ Data Processing

● Data Forward to EXCEL

You will be asked whether the data needs to be forwarded to EXCEL or not when the data is received from the CA71. If you click Yes, EXCEL automatically starts, and data forwarding to EXCEL commences. A graph will be created automatically after completion of the data forwarding.



■ **Notice**

- The contents in this manual are subject to change without prior notice.
- The information contained herein is assumed accurate, however if any doubt, errors or omissions come to your attention please inform us.
- Yokogawa M&C assumes no responsibility or liability for damages resulting from misuse or inadvertent operations by the customer.
- This manual is intended to describe the functions of the product and does not guarantee that the functions suit particular purposes of the customer.
- EXCEL, Windows95, Windows98, WindowsMe, WindowsNT4.0, Windows2000, WindowsXP are registered trademarks of Microsoft Corporation in the United States.
- Yokogawa M&C assumes no responsibility or liability for any direct or indirect loss or damage caused by the use or any unpredictable defect of the product.
- Modification of the product is strictly prohibited.
- Reverse engineering such as recompilation and disassembly of the software is strictly prohibited.
- The software supplied by Yokogawa M&C should not be transferred, exchanged, leased or sublet, in whole or in part, for the use of third parties without prior permission of Yokogawa M&C.