

**High Content Analysis Software System  
Software Installation Manual**

IM 80K01B02-01E

This manual describes procedure of CellPathfinder Software installation. Before you start to use, please read this manual carefully to enable correct use of the system.

## 1 Install software

Installation procedure is different in case of new installation and upgrading.

**Note:**

Software performance is guaranteed only if CellPathfinder Software is installed on a PC designated by Yokogawa. CellPathfinder Software can be used by customer's own Workstation. Although it can be installed on Windows 7, it can not be guaranteed that it operates normally, so please fully check the operation with a free trial version etc. Specification of workstation recommended by Yokogawa is below:

Model	Dell Precision T5810XL
Processor	Intel Xeon E5-1620 v4
Memory	128 GB
HDD	System Drive (C:) 4TB Data Drive (D:) 4TB
OS	Microsoft Windows 10 Pro operating system 64bit English
Monitor	Recommended : 24 in. wide monitor x2, 1920 x 1200 Pixels

**New installation:**

Perform procedure from [1.1 Install software](#) to [3 Install IM \(User's Manual\)](#).

**Upgrading:**

Perform procedure from [1.1.4 Install CellPathfinder](#) to [3 Install IM \(User's Manual\)](#).

## 1.1 Install software

Unzip the “CellPathfinder\_RX3.XX.XX.XX<sup>※1</sup>\_E”.

Files necessary for installation are as follows. Please check whether all these are present.

No	File name	Remarks
1	CellPathfinderSetup_x64_R3.02.01.03.msi	CellPathfinder Installer
2	vc redistrib_x64.exe (In the [Microsoft Visual C++ 2012 Redistributable Update4] folder in the [CellPathfinder Driver Runtime_R1.01.01] folder.)	Microsoft Visual C++ 2012 runtime
3	vc redistrib_x64.exe (In the [Microsoft Visual C++ 2013 Redistributable Update4] folder in the [CellPathfinder Driver Runtime_R1.01.01] folder.)	Microsoft Visual C++ 2013 runtime
4	NDP461-KB3102436-x86-x64-AIOS-ENU.exe	Microsoft .NET Framework 4.6.1
5 <sup>※3</sup>	IM80K01B01-01_XXX <sup>※1</sup> .pdf or IM80K01B01-01E_XXX <sup>※1</sup> .pdf	User's manual
6	YYY <sup>※2</sup> _CellPathfinder_Request_ActivationCode_E.xlsx or YYY <sup>※2</sup> _CellPathfinder_Request_ActivationCode_E.xlsx or CellPathfinder_Request_ActivationCode_E.xlsx or CellPathfinder_Request_ActivationCode_E.xlsx	Activation code request sheet

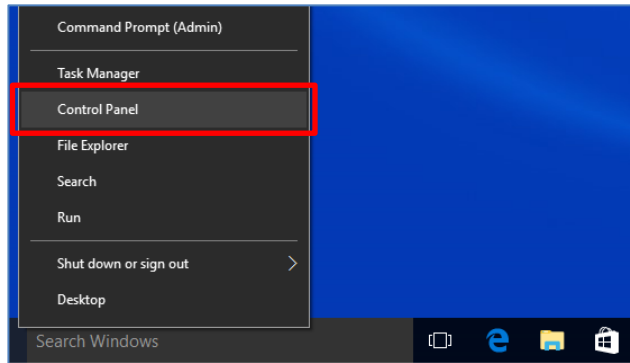
※1 XXX is Revision number (eg.001 or 002 etc.)

※2 Distributor or Free is entered in YYY.

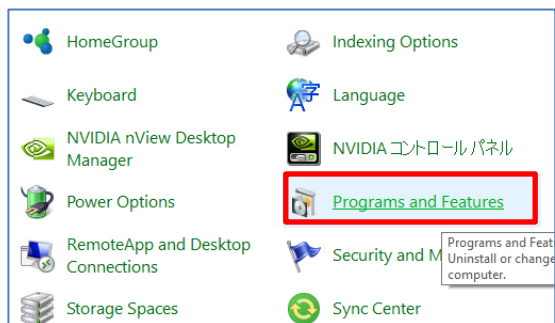
※3 The user's manual is not included at the time of installation. It is described in [2.3License activation](#) , it will be sent with "Activation code ".

### 1.1.1 Install Microsoft Visual C++2012 Redistributable

- (1) Confirm existence of Microsoft Visual C++ 2012 Redistributable (x64).  
Click the right mouse button on “StartMenu” and select “Control Panel”.



- (2) Click “Program and Features”.

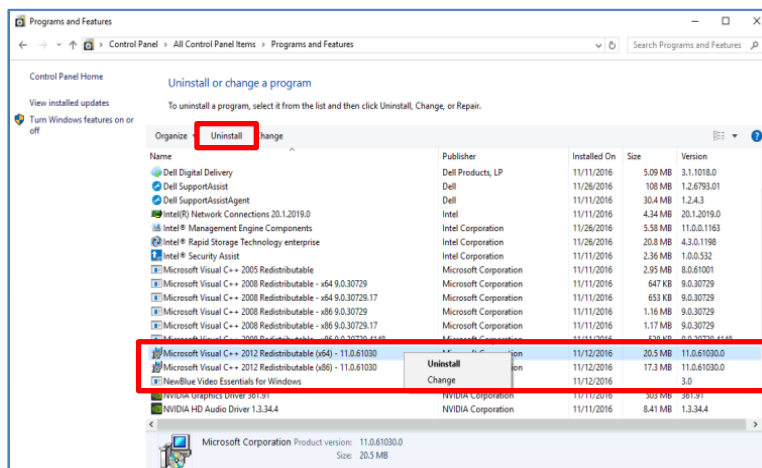


- (3) Confirm if the version of Microsoft Visual C++ 2012 Redistributable (x64) installed is “11.0.61030.0” or later. If “Microsoft Visual C++ 2012 Redistributable (x64)” is “11.0.61030.0” or later version, go to chapter 1.1.2.

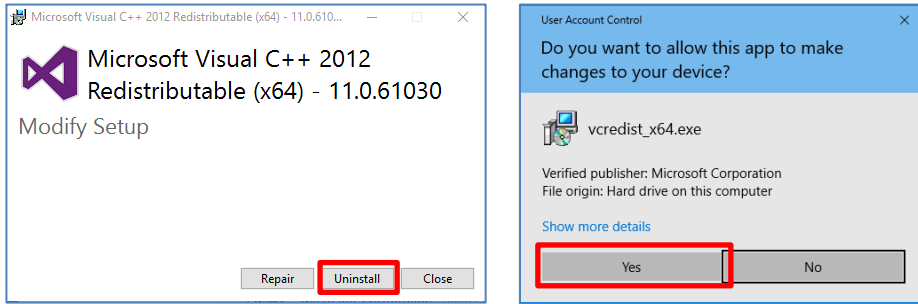
If it is not installed, go to (7) to install the right version.

If it is older version, go to (4) to uninstall older version and install the right version.

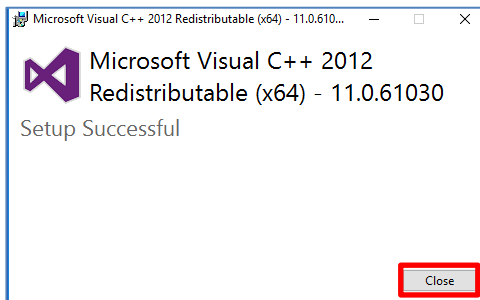
- (4) Select the object and click the right mouse button for “Uninstall”.



- (5) Click “Uninstall” below left and click “Yes” below right.



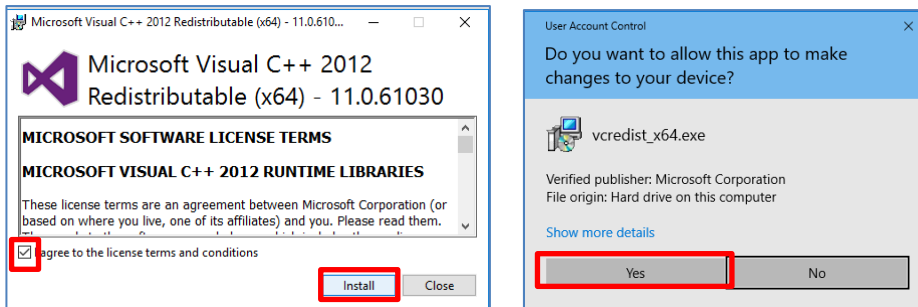
- (6) Click “Close”.



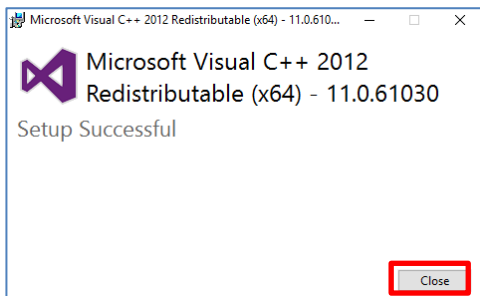
- (7) Double click “vcredist\_x64.exe “ in CellPathfinder Driver Runtime\_RX.XX.XX<sup>※</sup> “Microsoft Visual C++ 2012 Redistributable Update4”.

※1 X.XX.XX is Revision number. It is different from the above CellPathfinder revision number.

- (8) Read license terms, check “I agree to license terms and conditions” and click “Install”.  
Then click “Yes”.

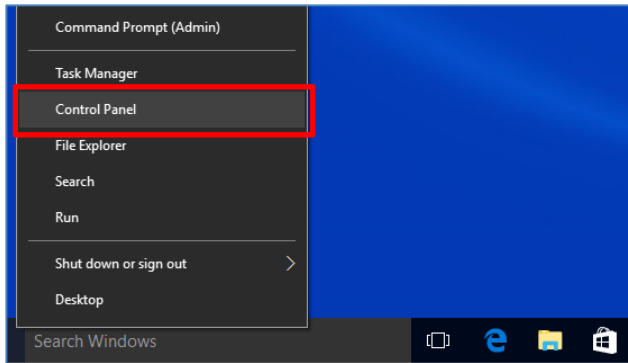


- (9) Click “Close” and install the following software.

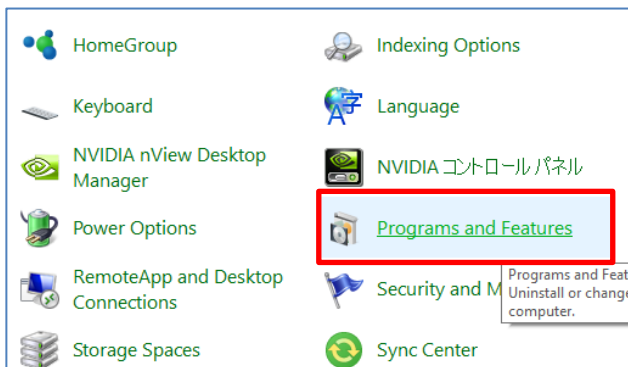


## 1.1.2 Install Microsoft Visual C++2013 Redistributable

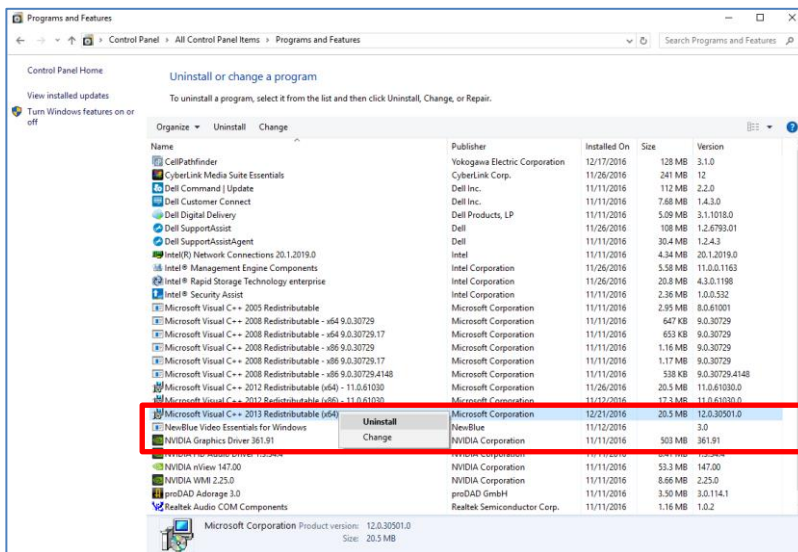
- (1) Confirm existence of Microsoft Visual C++ 2013 Redistributable (x64).  
Click the right mouse button on “StartMenu” and select “Control Panel”.



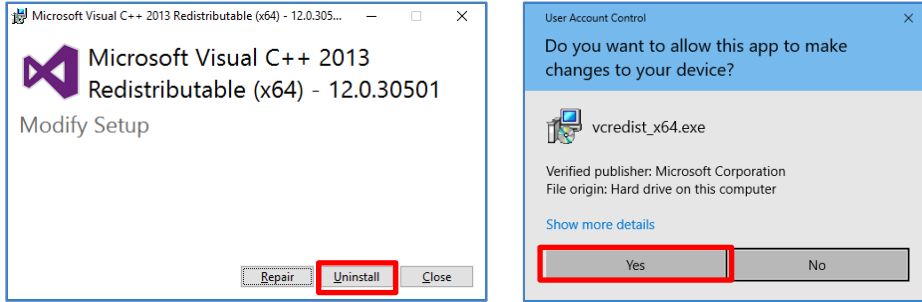
- (2) Click “Program and Features”.



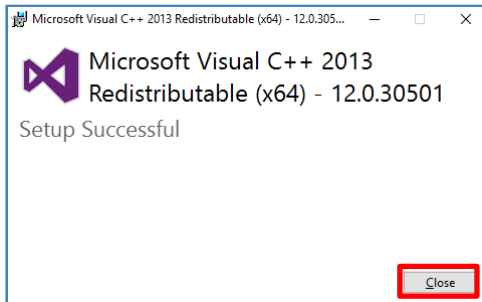
- (3) Confirm if the version of Microsoft Visual C++ 2013 Redistributable (x64) installed is “12.0.30501.0” or later. If “Microsoft Visual C++ 2013 Redistributable (x64)” is “12.0.30501.0” or later version, go to chapter 1.1.3.  
If it is not installed, go to (7) to install the right version.  
If it is older version, go to (4) to uninstall older version and install right version.
- (4) Select the object and click the right mouse button for “Uninstall”.



- (5) Click “Uninstall” below left and click “Yes” below right.



- (6) Click “Close”.

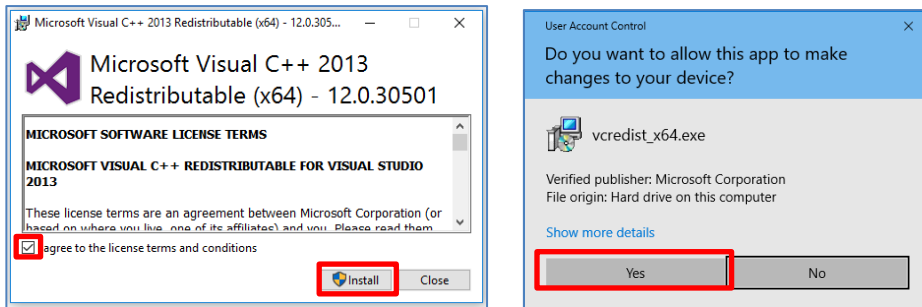


- (7) Double click “vcredist\_x64.exe “ in “CellPathfinder Driver Runtime\_RX.XX.XX<sup>※</sup>  
<sup>1</sup>Microsoft Visual C++ 2013 Redistributable”.

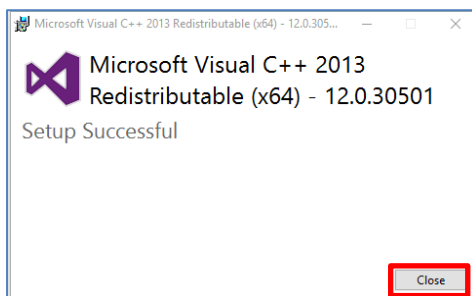
※1 X.XX.XX is Revision number. It is different from the above CellPathfinder revision number.

- (8) Read license terms, check “I agree to license terms and conditions” and click ”Install”.

Then click “Yes”.



- (9) Click “Close” and install the following software.

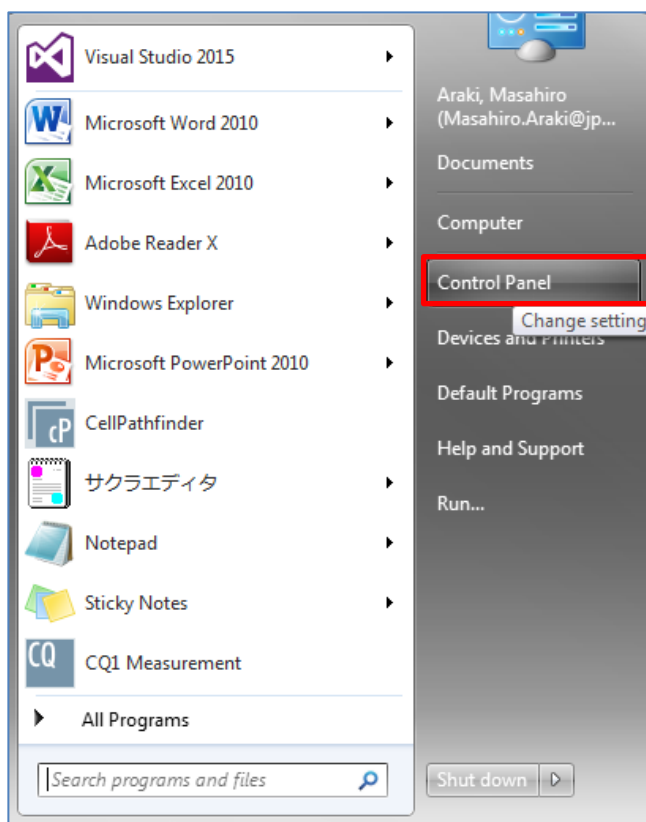


### 1.1.3 Install Microsoft .NET Framework 4.6.1 (in case of Windows7 only)

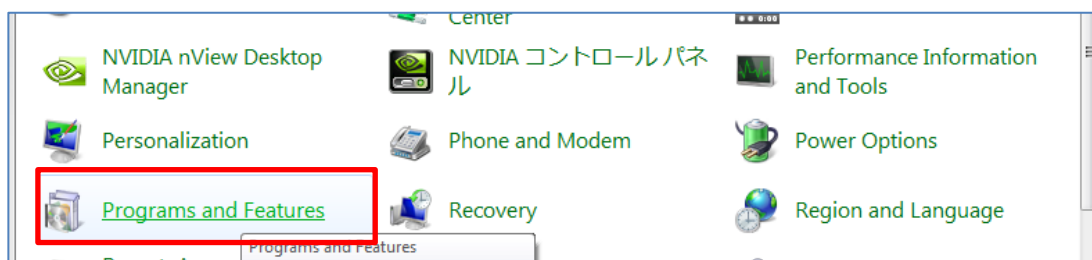
Installation is necessary only for Windows 7. For Windows 10, go to 1.1.4.

- (1) Confirm existence of Microsoft .NetFramework 4.6.1.

Click the right mouse button on “StartMenu” and select “Control Panel”.



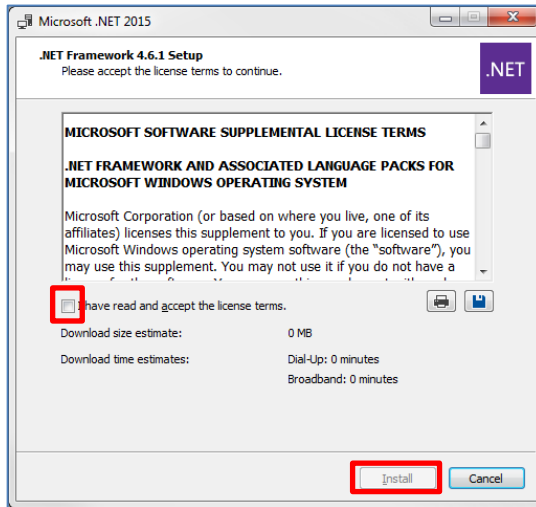
- (2) Click “Program and Features”.



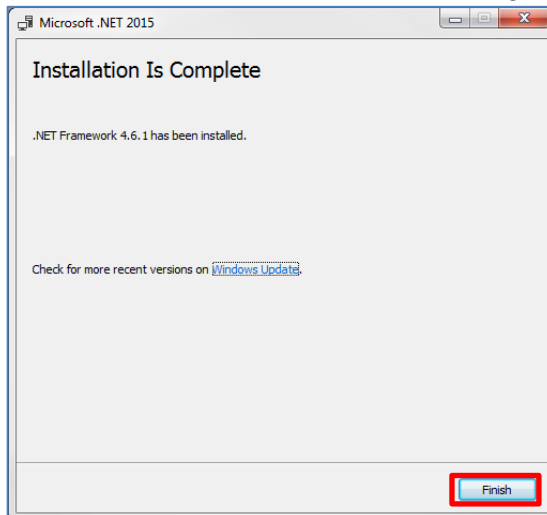
- (3) Confirm if “Microsoft.NET Framework 4.6.1” is installed. If it is installed, go to 1.1.4  
If it is not installed, go to (4) to install it.

Name	Publisher	Installed On	Size	Version
Microsoft .NET Framework 4.6 SDK	Microsoft Corporation	2016/06/23	20.0 MB	4.6.00081
Microsoft .NET Framework 4.6 SDK (日本語)	Microsoft Corporation	2016/06/23	3.51 MB	4.6.00081
Microsoft .NET Framework 4.6 Targeting Pack	Microsoft Corporation	2016/06/23	40.3 MB	4.6.00081
Microsoft .NET Framework 4.6 Targeting Pack (日本語)	Microsoft Corporation	2016/06/23	79.7 MB	4.6.00127
Microsoft .NET Framework 4.6.1	Microsoft Corporation	2016/06/23	38.8 MB	4.6.01055
Microsoft .NET Framework 4.6.1 (日本語)	Microsoft Corporation	2016/06/23	2.93 MB	4.6.01055
Microsoft .NET Framework 4.6.1 SDK	Microsoft Corporation	2016/06/23	20.0 MB	4.6.01055
Microsoft .NET Framework 4.6.1 SDK (日本語)	Microsoft Corporation	2016/06/23	3.53 MB	4.6.01055

- (4) Double click “NDP461-KB3102436-x86-x64-AllOS-ENU.exe”. Check “I have read and accept the license terms.” and click “Install”.



- (5) Click “Finish” and install the following software.

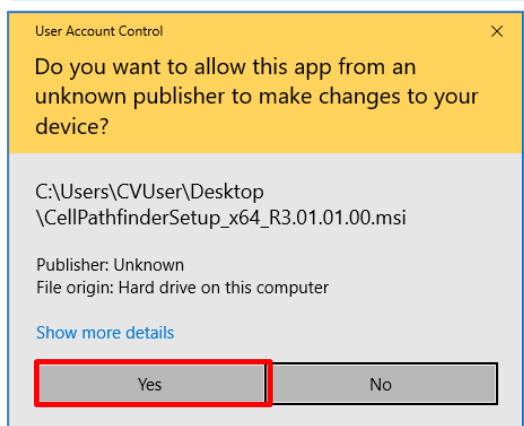
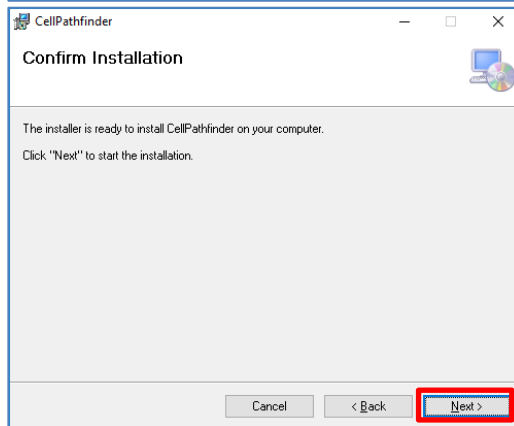
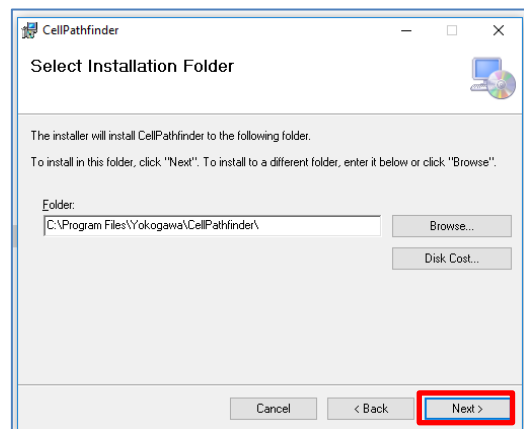
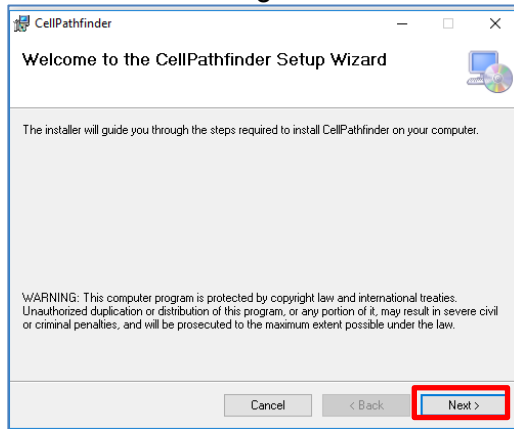




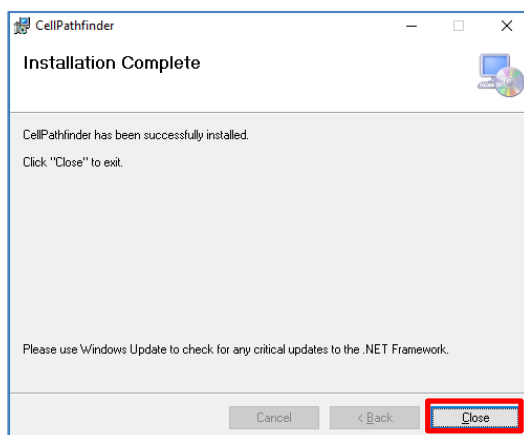
### 1.1.4 Install CellPathfinder

- (1) Double click "CellPathfinderSetup\_x64\_RX.XX.XX.XX<sup>※1</sup>.msi".  
※1 XXX is Revision number (eg.001 or 002 etc.)
- (2) Click "Next" in the following windows.

Click "Yes" below right.



- (3) Click "Close".



- (4) Go to chapter [2 Activate CellPathfinder](#).

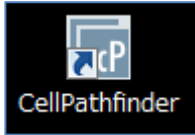
## 2 Activate CellPathfinder

### 2.1 Summary

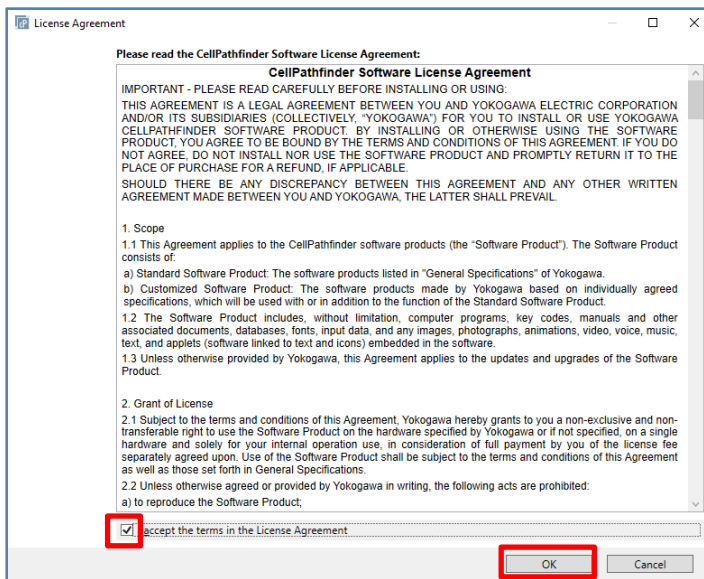
Process the following procedure to authenticate software license.

### 2.2 Request for Activation code

- (1) Double click the icon of “CellPathfinder” on desktop.

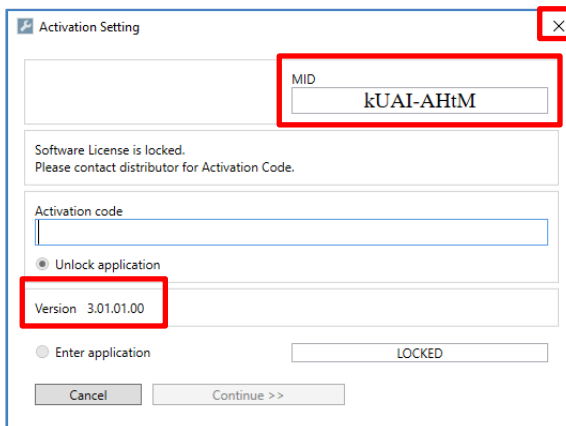


- (2) Check “I accept the terms in the License Agreement” and click “OK”.



- (3) Write down “MID”, “Version” and other information in “YYY<sup>※1</sup>\_CellPathfinder\_Request\_ActivationCode\_E.xlsx”, and inform them to the contact of Yokogawa ([lsc\\_service@cs.jp.yokogawa.com](mailto:lsc_service@cs.jp.yokogawa.com)) or distributor and request Activation code of the CellPathfinder.

※1 Distributor or Free is entered in YYY.

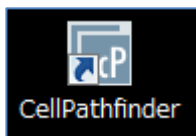


- (4) Click “x” and exit the software.

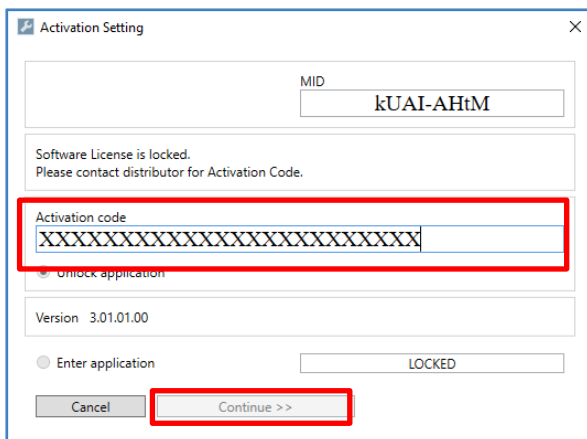
## 2.3 License activation

When "Activation code" arrives from **Yokogawa** or distributor, activate the license.

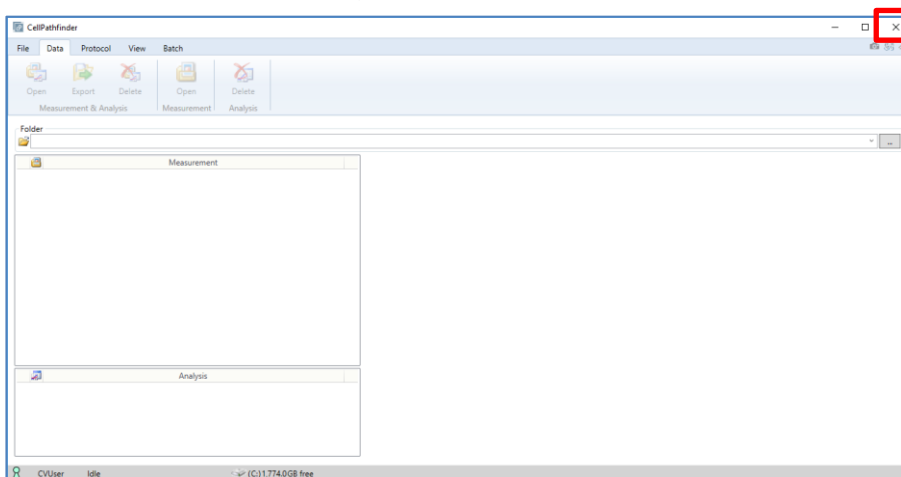
- (1) Double click the icon of "CellPathfinder" on desktop.



- (2) Enter the "Activation code" issued by Yokogawa and click "Continue".



- (3) After CellPathfinder started, click "x" and exit the software.



- (4) Install IM indicated chapter 3.

## 3 Install IM (User's Manual)

- (1) Copy IM (IM 80K01B01-01E\_XXX<sup>※1</sup>.pdf) to "C:¥PFAnalysisShare¥Manual" folder.  
<sup>※1</sup> XXX is Revision number (eg.001 or 002 etc.)

This completes the installation.

## 4 Trademarks

- Dell Precision is registered trademarks or trademarks of Dell Inc. in the United States.
- Microsoft and Windows, Visual C++ are registered trademarks or trademarks of Microsoft Corporation in the United States and other countries.
- Intel and Xeon are registered trademarks of Intel Corporation in the United States and other countries.
- CellPathfinder is trademarks of Yokogawa Electric Corporation.
- In this document, registered trademarks or trademarks are not indicated by <sup>TM</sup> and ®.