

DX-P Log In Manager Software 1.0

User's Manual

© Yokogawa Corporation of America
2 Dart Road
Newnan, GA 30265
USA
Phone 770-254-0400 • Fax 770-251-6427

Table of Contents

Installation.....	5
Minimum System Requirements.....	5
PC Installation	5
Starting the Program	5
DXP Login Manager Main Screen	6
Configuration	7
Program Log In	7
Configure System Users	7
Device Assignments	8
Area Settings	10
Operation	10
Standalone Mode	10
Area Mode.....	12
Event Viewer	13

Notes

Overview

The DX-P Login Manager (LM) software allows the user to fully configure all log in settings found in the DX-P System Mode Admin tool menus.

There are two modes of operation- full Administrator Mode and Change Password. Administrator mode allows full access to every Admin tool setting field in the DX-P, just as if the user were operating the unit from the front panel keys. The user can work with one DX-P at a time, or they can load the same settings to a group of DX-Ps assigned to an "Area". In this manner, a group of units can be configured quickly and easily with identical settings.

The Change Password mode allows a User-level person to change an existing private password to a new private password. This is the same functionality provided by the Password Change command accessed from the front panel FUNC key. The user Change Password mode can also execute the same password change to a group of DX-Ps assigned to an area.

Installation

Minimum System Requirements

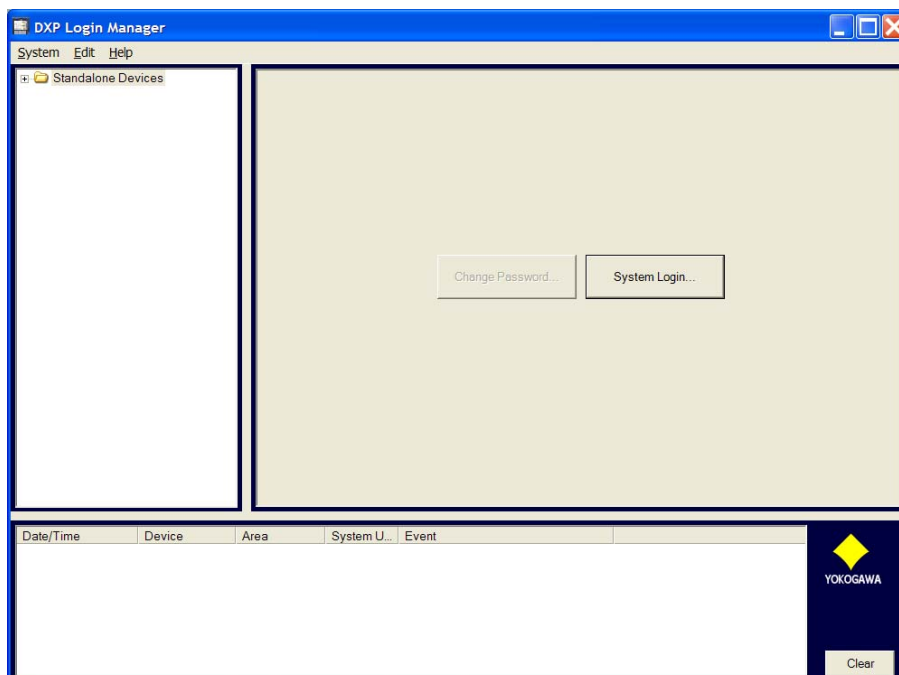
- Windows 2000/XP
- 500 MHz Pentium
- 128 MB RAM
- 50 MB available hard drive space

PC Installation

1. From the CDROM, run DXPLoginManagerSetup.exe.
2. Follow the screen prompts to accept the default installation settings or change each setting as needed.

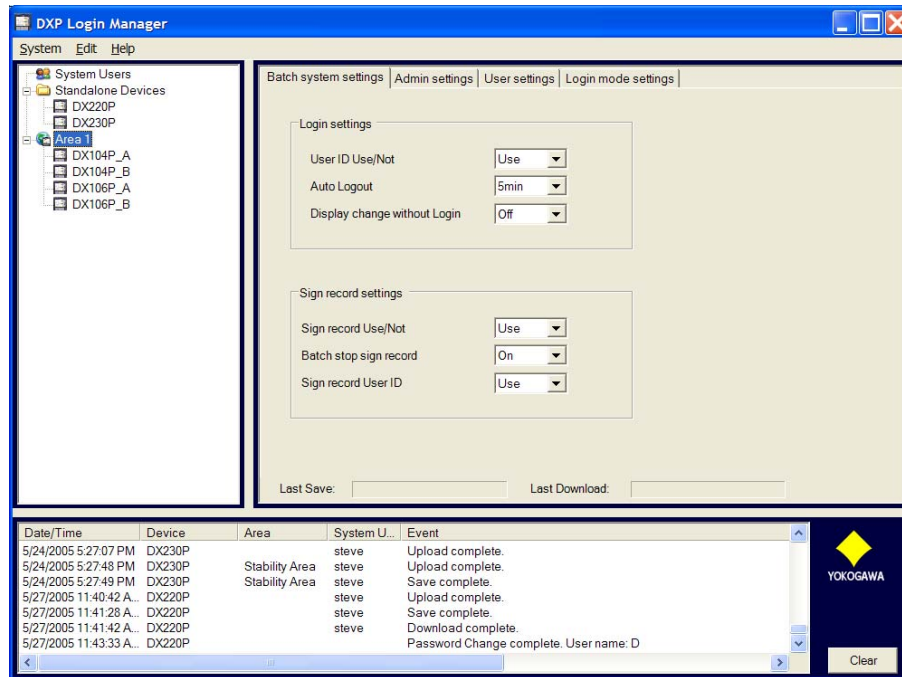
Starting the Program

1. Start the program from either the desktop shortcut icon named **DXP Login Manager** or from the Start, Programs menu as follows:
2. Click Start> Programs> Yokogawa> DXP Login Manager. When the program starts, the following screen will appear:



DXP Login Manager Main Screen

1. Once a user is assigned to the DX-P Log In Manager software and devices and areas are assigned, the manager screen will look similar to the sample screen below:



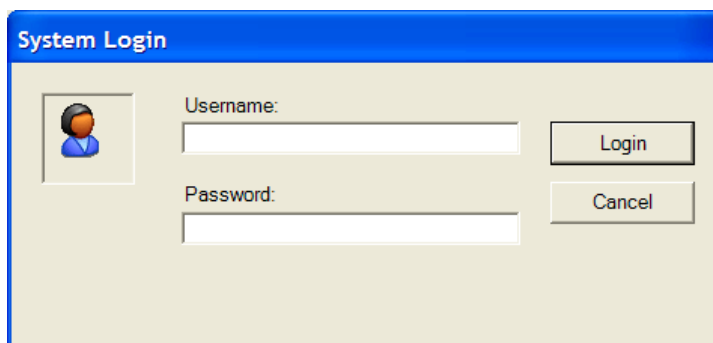
- a. On the left side of the manager screen is a directory “tree” that displays configured DX-P Log In Manager software Users (no relation to DX-P device users), Standalone devices and devices assigned to Areas.
- b. On the right side of the manager screen are tabs for selection of Batch system settings, Admin settings, User settings, and Login mode settings.
- c. At the bottom of the manager screen is a message list where the status of all software operations are displayed. This is used as a diagnostic tool to confirm operation of each action.

Configuration

Program Log In

When installed and run for the first time, LM requires the user to log into the program using a default Username and Password. The person using this software at this time should be a trusted administrator level person, because they will be responsible for entering the network communication settings and log in needed to establish communications with each DX-P to be used with this software. Administrator users of this software will also have full visibility and control of the Admin tool menu settings for the DX-P, so the user must be of at least the same responsibility level of a DX-P Administrator.

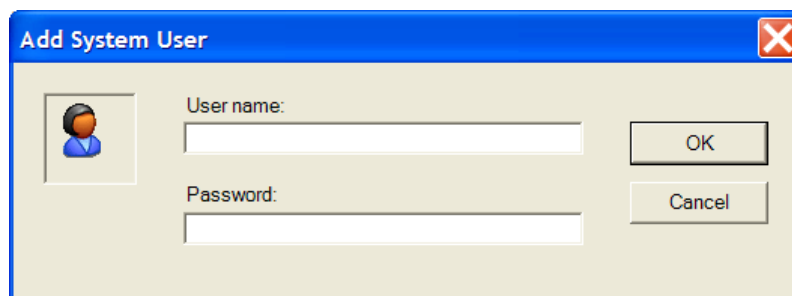
Click the System Login... button, and the following menu will appear:

A dialog box titled "System Login" with a blue header bar. On the left is a small icon of a person. To the right of the icon are two text input fields. The first is labeled "Username:" and the second is labeled "Password:". To the right of the "Username:" field is a "Login" button, and to the right of the "Password:" field is a "Cancel" button.

Enter the default Username and Password which is ADMIN. You will now be returned to the main screen.

Configure System Users

This is a good time to set up unique usernames and passwords for each person who will be allowed Administrator access to this software. At the left of the screen, click on the System Users icon, and the ADMIN user will appear in the left window. Right click on ADMIN and choose New User... and the Add System User menu will appear as shown below. Enter the new user name and password and click ok. Repeat this process for each user.

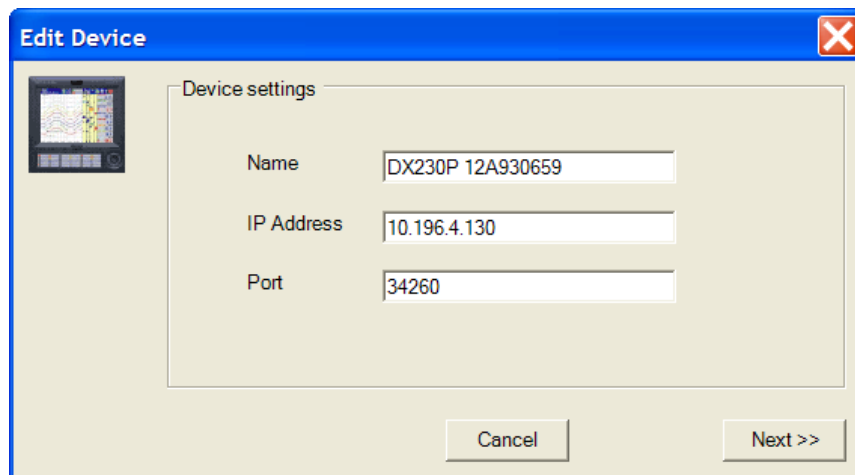
A dialog box titled "Add System User" with a blue header bar and a red close button in the top right corner. On the left is a small icon of a person. To the right of the icon are two text input fields. The first is labeled "User name:" and the second is labeled "Password:". To the right of the "User name:" field is an "OK" button, and to the right of the "Password:" field is a "Cancel" button.

For security purposes, you should delete the existing ADMIN user once you have entered your private user list. To do this, right click on ADMIN and choose Remove User. It is recommended that you have at least two new users enabled (and they know their passwords) before you delete the ADMIN user.

Device Assignments

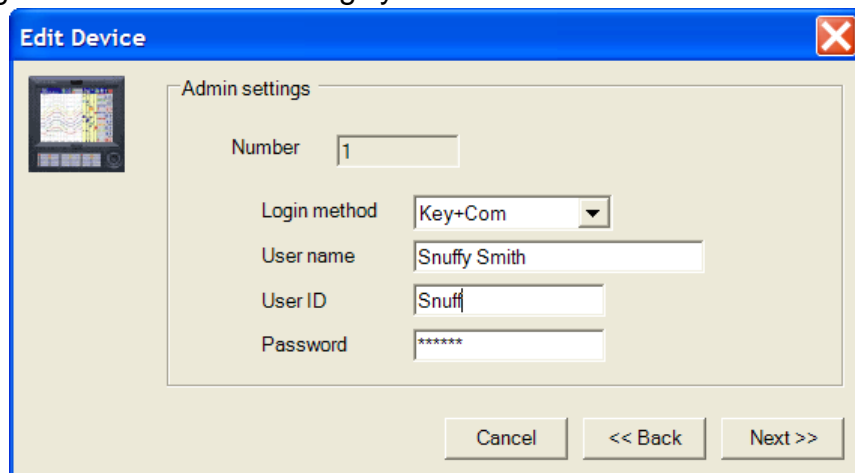
The next step is to assign DX-P devices to the LM software. The LM software allows you to work with any number of DX-P devices individually, and also as a group (area). You can assign a device individually and that same device can also be assigned to an area. When DX-Ps are assigned to an area, settings that are downloaded to the area will be loaded to each DX-P in that area, so that all units will have identical log in settings.

1. To assign a new device, select **New Device...** from the System pull down menu, or right click on the Standalone Devices folder and choose **New Device...** The Edit Device menu will appear:



The screenshot shows the 'Edit Device' dialog box with the 'Device settings' tab selected. The dialog has a blue title bar with the text 'Edit Device' and a red close button. On the left is a small icon of a device screen. The main area contains three text input fields: 'Name' with the value 'DX230P 12A930659', 'IP Address' with the value '10.196.4.130', and 'Port' with the value '34260'. At the bottom right are two buttons: 'Cancel' and 'Next >>'.

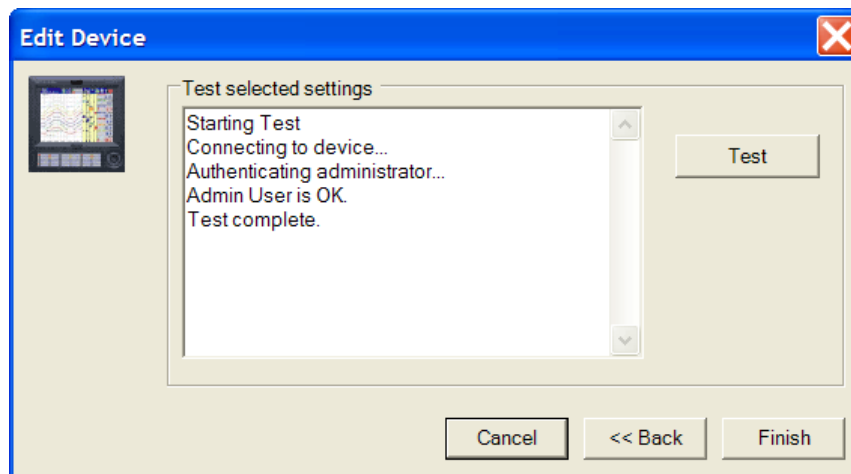
2. Enter the required settings and click **Next>>**, to get to the second menu where log in settings are entered. The settings you enter here must match one of the Administrator



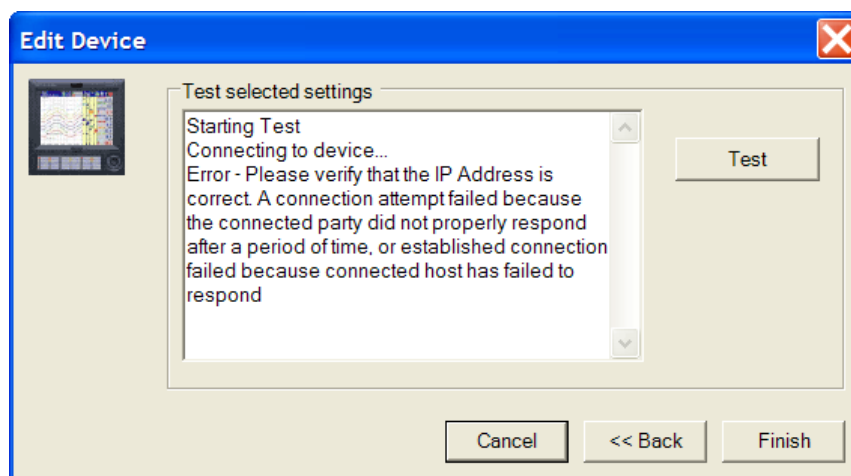
The screenshot shows the 'Edit Device' dialog box with the 'Admin settings' tab selected. The dialog has a blue title bar with the text 'Edit Device' and a red close button. On the left is a small icon of a device screen. The main area contains several input fields: 'Number' with the value '1', 'Login method' with a dropdown menu showing 'Key+Com', 'User name' with the value 'Snuffy Smith', 'User ID' with the value 'Snuff', and 'Password' with the value '*****'. At the bottom right are three buttons: 'Cancel', '<< Back', and 'Next >>'.

log in people that have already been configured for the DX-P. This administrator must be set for Key+Com on the DX-P in order for the software to function.

3. Click **Next>>** again, and the following menu will appear allowing you to test communications with this DX-P.



- a. Click **Test**, and if communications are successful, the "OK" message in the window will appear as shown.



- b. If the connection test fails, you will see the message in the menu below. Possible reasons for a connection failure are:
 - i. Log in settings in this configuration menu disagree with the target DX-P settings. Double-check all settings so they match. All text is case sensitive.
 - ii. The network connection has failed for some reason. Check the DX-P communication settings and make sure this PC can reach the target DX-P by using the "ping" command in the DOS menu to check the connection. Ask your LAN administrator for assistance if you suspect a network problem.

- c. Click **Finish** if the test is successful and repeat these steps for each DX-P that you plan to use with this software. When all devices are configured, each DX-P will appear in a list identified by the name you assigned under the Standalone Devices folder in the left window of the main menu screen.

Area Settings

Any number of DX-Ps in your system can be assigned to an Area. When a group of DX-Ps is assigned to an area, the same log in settings can be loaded to all devices in one session. This is especially useful for routine password changing by User-level operators who work with a number of DX-Ps.

To create a new area, choose **New Area...** from the System pull down menu. You will then be prompted to enter a descriptive name for this area. Enter a name and click Add. The new area will now appear in the left window of the main display.

To add a device to the area, click on and highlight the area, and then right click and select **New Device...** or choose **New Device for Area...** from the System pull down menu. You will then see the Add Device menu. Enter the required settings in this and the successive menus as performed in the previous section for Device Assignments.

Repeat these steps for each device that you want in each area.

The properties for any configured device or area can be edited at a later time by selecting the device or area and then selecting **Properties...** from the Edit pull down menu.

Operation

Once devices and areas are assigned, the administrator can begin configuration.

Standalone Mode

1. **Task- Upload all current log in settings from a device, modify them, save them to the database, and download changed settings back to the device.**
 - a. To upload settings, select a device in the list, and choose **Upload from device...** in the Edit menu. The software will read the settings from the device and display them in the tabbed menus on the right side of the main display.
 - b. Change each of the menu items as needed in the **Batch system settings** tab.
 - c. Change each of the items in the **Admin settings** and **User settings** tabs by double clicking on the item. This will open a separate window for each item. To reset an Admin or User person's password to default, check the **Password reset** box as shown in the Edit User menu on the next page.

Edit User

User settings

Number

Login method

User name

User ID

Password expire

Login mode no.

Calibration correction set

Password reset ☒

OK Cancel

After a setting is changed in each of these tabs, the new setting is highlighted in yellow. This is now a **pending setting**. Click OK when done.

- d. Change an item in the **Log in mode settings** tabs by double clicking on the item. This will open a separate menu for each item. Modify each setting and click OK when done.
- e. When finished with all setting changes, chose **Save** from the Edit menu. This saves the pending settings to an Access data base file.
- f. Now select **Download to device...** from the Edit pull down menu. You must now select the settings that you wish to download from the choices in the Download menu. Make a selection and then click Continue to download the settings.
 - **Download Pending Changes-** sends only the changes made that are highlighted in yellow. For example, if User level log in settings for Users 1-4 were already configured for the device that you uploaded the settings from, and you just entered new settings for User 5, only User 5 settings will be highlighted in yellow and these changed settings are the only ones that will be sent. Existing settings are not changed.
 - **Download All Settings-** Sends all of the settings currently visible in the tabbed menus to the device(s) you select in the next step. This will overwrite the current settings in these devices with the ones you see here so use this setting with caution.

Download

Download Settings

☒ Download Pending Changes

☐ Download All Settings

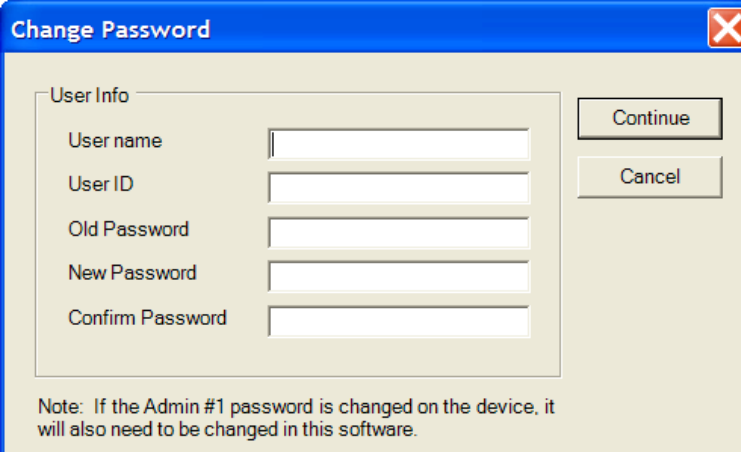
☐ Download Admin Number 1

Continue Cancel

- **Download Admin Number 1-** when checked; log in settings for Admin 1 is sent with Pending Settings or All Settings. This resets the Admin 1 password to default, so front panel private password change at the DX-P is required, and corresponding password change in this software is required to re-establish communications.

2. Task- Change a password to a new private password. This can be performed by a User level operator or Administrator and does not require a software log in.

- Select a device in the list and choose **Change Password...** from the Edit pull down menu. The edit password menu will appear as shown:



- Enter the login settings in each of the fields as requested, and then click **Continue**. A menu will appear indicating the communication status, and acknowledgment of the action will appear in the event list at the bottom of the screen.

3. Task- Acknowledge a locked user.

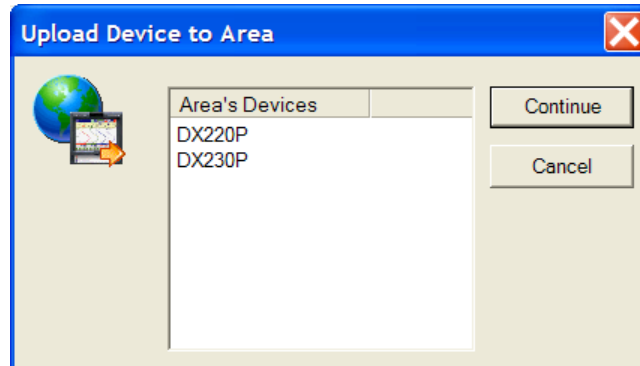
- Select the device with the locked user from the Standalone device list.
- Select **Acknowledge Locked** from the Edit pull down menu.
- The software will issue the Acknowledge command to the device and the action status will appear in the list at the bottom of the manager screen.

Area Mode

1. Task- Upload current log in settings from a device in an area, modify them, save them to a database, and download changed settings back to all the devices in the area. This sets all devices the same simultaneously.

- Select the Area in the area list that you wish to modify.

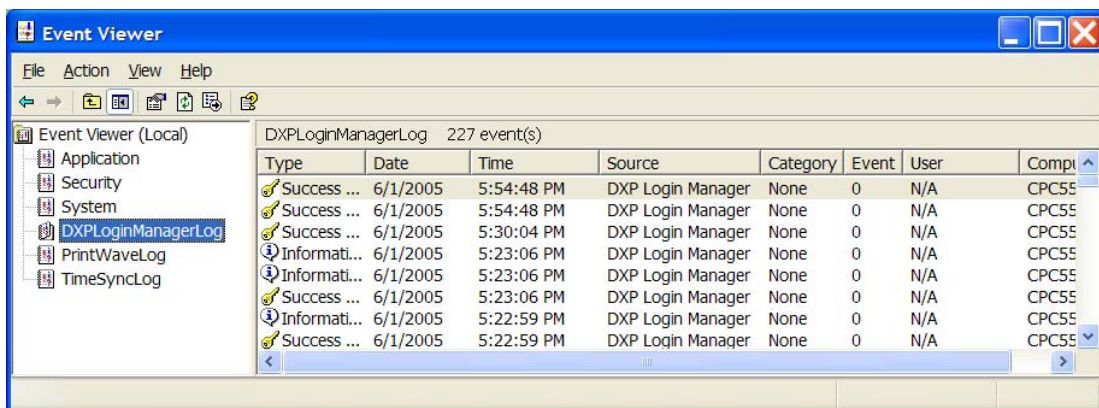
- b. Select **Upload from device...** in the Edit pull down menu. The following menu will appear prompting you to pick a device in this area:



- c. Choose the device and click **Continue**. The program will then read all the settings from the device and display them in the tab fields on the right.
- d. Select and enter all of the required settings in each of the tab menu fields. When done, select **Save** in the Edit pull down menu.
- e. Now select **Download to device...** from the Edit pull down menu. You must now select the settings that you wish to download. See the previous section for Standalone Mode for a description of each download choice.
- f. Click **Continue**, and the software will download the settings to each of the devices in the Area.

Event Viewer

The LM software logs all actions to the Windows Event Log, which is a useful diagnostic tool. The log is accessed from the Event Viewer menu in the Windows Administrative Tools Control Panel menu. The path to this menu is **start/Settings/Control Panel/Administrative Tools/Event Viewer**. A shortcut to this menu is provided in the LM software; select Event Viewer from the System pull down menu. The following menu will appear:



Select the **DXPLoginManagerLog** in the directory tree to the left, and all of the software events will be listed to the left. You can view details about each event by double clicking on the event in the list. See the event example below:

The Event Log can be saved to a data file by right clicking on the DXPLoginManagerLog entry in the directory tree and choosing **Save Log File As...** See the Windows Help application for more information about the Event Viewer.

