

Ordering Information

To order the Nuclear Option Package, specify the following option code for any DX100 or DX200 model. Please note that Simulator Functions also require the /R1 Remote Control option.

Option Code	Description	Notes
/S120	Nuclear Option Package; all models	Specify /R1 Remote Control option for Simulator functions

Additional Documents

Complete DAQSTATION functions and specifications can be found in the following documents available from your local Yokogawa representative or on-line at www.us.yokogawa.com:

Description	Part Number
DX100 & DX200 Bulletin	04L01A02-00E
DX100 General Specifications	GS 04L01A01-00E
DX200 General Specifications	GS 04L02A01-00E
DX100L General Specifications	GS 04L04A01-00E
DX200C General Specifications	GS 04L03A01-00E



DX100



DX200

YOKOGAWA

Yokogawa Corporation of America
2 Dart Rd.
Newnan, Georgia 30265 U.S.A
Telephone: (770) 254-0400 Fax: (770) 251-6427 Web: us.yokogawa.com

Nuclear Sales Coordinator
10 Salzano Drive
Hamilton Square, New Jersey 08690 U.S.A
Telephone: (609) 631-8375 Fax: (609) 631-8390 Email: martin.cohen@us.yokogawa.com

YOKOGAWA

DAQSTATION

Nuclear Qualified

DAQSTATION

Network Enabled
Data Acquisition Stations



DX100



DX200

Yokogawa Corporation of America and National Technical Systems have aligned to provide the most capable and reliable network-enabled video graphic data acquisition instruments in the industry.

With over 40 years combined experience in nuclear power, the NTS/Yokogawa team provides qualification services that meet the needs of the domestic and international nuclear power markets.

DAQSTATION Network-Enabled Data Acquisition Stations



DAQ100

DAQ200

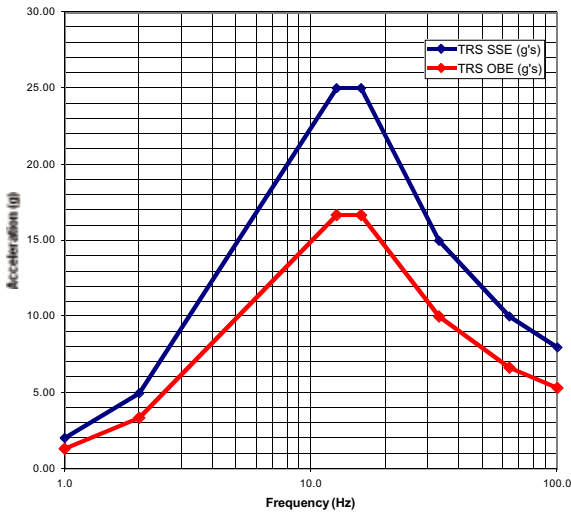
DAQSTATION replaces all popular paper strip chart recorders. Brilliant color graphic display gives operators critical plant information at a glance.

Standard Ethernet interface with TCP/IP, FTP, Web Server & Email allows data access anywhere on your network. Removable PC media choices: standard 1.44 MB FDD; optional ZIP and PCMCIA memory card. System access can be fully password protected. Automate data storage to your network server with FTP.

Qualifications	Standard
Seismic qualification	IEEE 344-1975
Environmental qualification for mild environment	IEEE 323-1974/1983
EMI/RFI	EPRI TR 102323 Rev. 1 & 2
Post accident monitoring	Reg. 1.97
Firmware validation & verification	IEEE 7.4.3.2 Annex D

- DX100 Series- 2 to 12 inputs - 5.5” color TFT display
- DX200 Series- 4 to 30 inputs - 10.4” color TFT display
- Horizontal or Vertical Trend, Bar Graph, Digital, Overview, and Information Displays
- Circular Trend on DX204C and DX208C models
- Eliminate paper and pens – no lost data
- Standard Ethernet interface

Actual Seismic Test Response Spectra



Optional DX100 and DX200 Nuclear Package

The optional DX100 and DX200 Nuclear Package supports functions commonly requested in nuclear power applications. This package can be conveniently ordered on any DX model using option code /S120. This option includes the following functions:

Logarithmic Scale and Exponential Display

- Required for radiation level measurements
- Displays a 1-15 decade log scale for pen pointers on Trend display
- Scale setting span; 1.0E-15 to 1.0E+15
- Process values are expressed as an exponent
- 2 or 3 digit exponent mantissa selection
- Math supported on non-log channels with /M1 option

Simulator Functions (with /R1 Remote Option)

- Contact input freezes all display functions including clock; pauses DX for exercise review. Clock resumes correct time on release
- Contact input clears data memory - readies DX for next class. Configuration settings are not affected

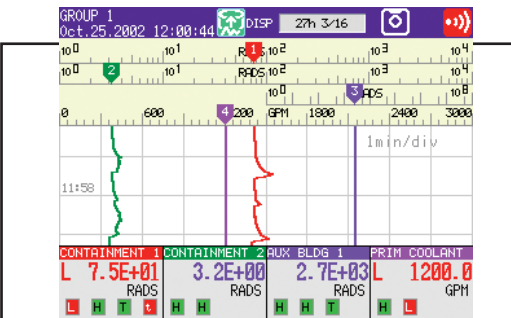
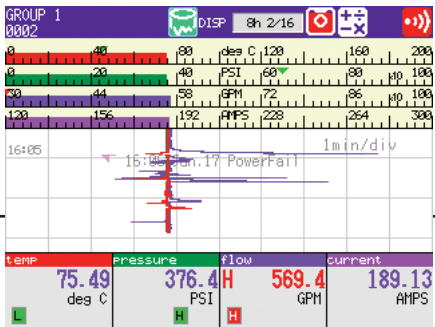
Internal Alarm Switches

- Alarms can activate remote control functions

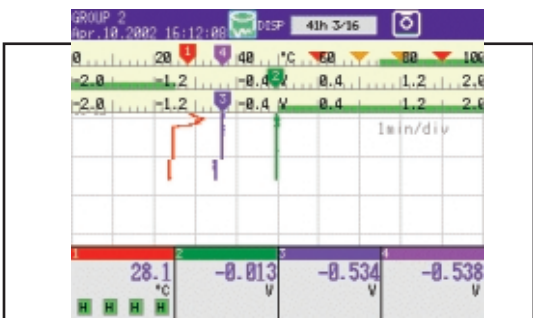
Display Functions

- Power failure message
- Color-coded trend scale bar indicator; selectable choice of bar or standard pen pointer. Color matches channel color
- Alarm set point arrows in trend scale when scale bar is enabled. All 4 alarms are indicated; green no alarm, red in alarm
- Green scale banding defined by Zone Low and Zone High setting range. Red scale and bar graph pointer for Alarms 1 & 4. Amber pointers for Alarms 2 & 3
- Black trend color choice
- Selection for Split Trend display in horizontal trend mode from the **DISPLAY** setting menu. Digital display is disabled in this mode (DX100 only)
- Jump to Trend History from Trend Display by pressing **DISP/ENTER** twice
- Jump to user-defined default display after a pre-set time
- Four panel view with trend scale (DX200 only)

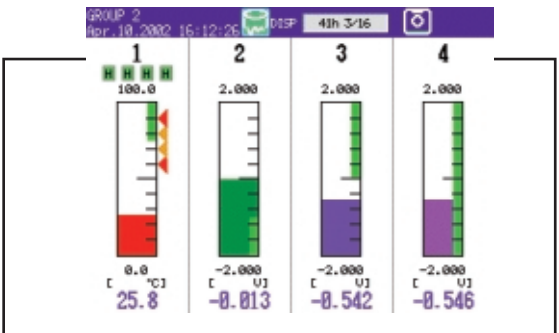
Trend Display showing scale bars and power fail message; /S120 option



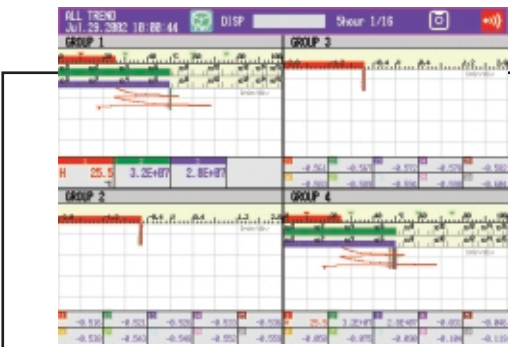
Trend Display showing log scale; /S120 option



Trend Display showing green scale banding with color-coded alarm setpoint pointers; /S120 option



Bar Display showing scale bands with alarm setpoint pointers; /S120 option



Four Panel Display (DX200 only) with Trend Scales; /S120 option