

Universal L Bracket



Introduction

When transmitters need to be replaced, technicians and engineers struggle with the various replacement options available to them. The Universal L Bracket offers multi-axis adjustability to accommodate a variety of installations. Its adjustable features allow it to conform to any competitor's configuration with the least amount of medication and creates flexibility in the future.

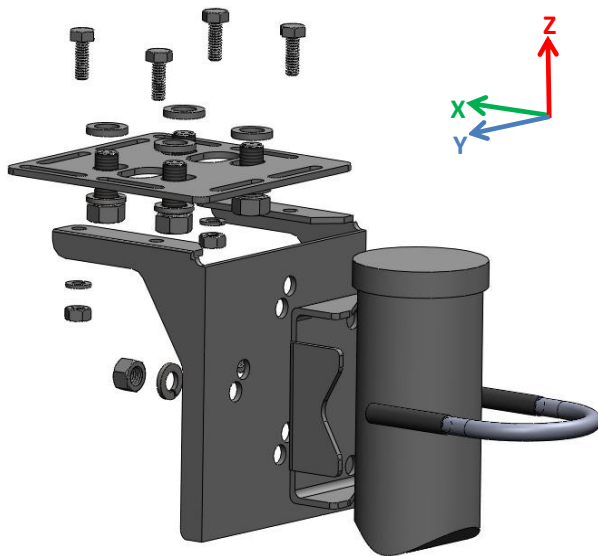


Figure 1: Universal L Bracket Kit Overview

Use

The Universal L Bracket's adjustability allows already installed impulse lines to be aligned with the process connections of the transmitter. It can be mounted to a 2 inch horizontal or vertical pipe or a panel (panel mounting bolts not included). It is designed for both horizontal and vertical impulse line installation. The Universal L Bracket can mount all EJA-E and EJX-A series pressure transmitters, except for the direct mount remote seal transmitters and the inline transmitters (EJA210E, EJA510E, EJA530E, EJX210A, EJX510A, EJX530A, EJX610A, and EJX630A).

Adjustability

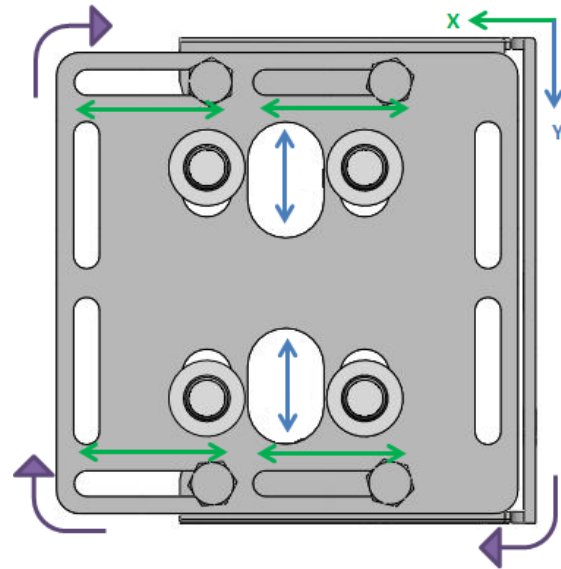


Figure 2: Adjustable Plate.

> X-Axis

The notches in the side of the plate allow adjustment of the transmitter position in the Green (X) direction.

> Y-Axis

The process connection holes and mounting bolt holes are extended in the Blue (Y) direction to allow for more adjustability of the transmitter position.

Note: The adjustable plate can be rotated 90° to offer more flexibility in the transmitter position.

> Z-Axis

Figure 1 displays that adjustments in the Red (Z) direction can be accomplished by physically installing the bracket at different pints along the vertical pipe stand. However, if the transmitter is mounted to a horizontal pipe or if it is a panel mount, then the two offset holes on the back of the L Bracket that accept the U-bolt can be used to make small adjustments in the Red (Z) direction. This is useful when trying to align electrical connections with previous transmitter installations.

Conclusion

Re-routing impulse lines cost time and money. Yokogawa's Universal L Bracket is an excellent tool for implementing EJA-E and EJX-A pressure transmitters in competitor's installations. The Yokogawa Universal L-Type bracket offers the user the maximum flexibility when installing a Yokogawa transmitter.

For more information, see the video covering the Universal L-Type Bracket at www.dpharp.com

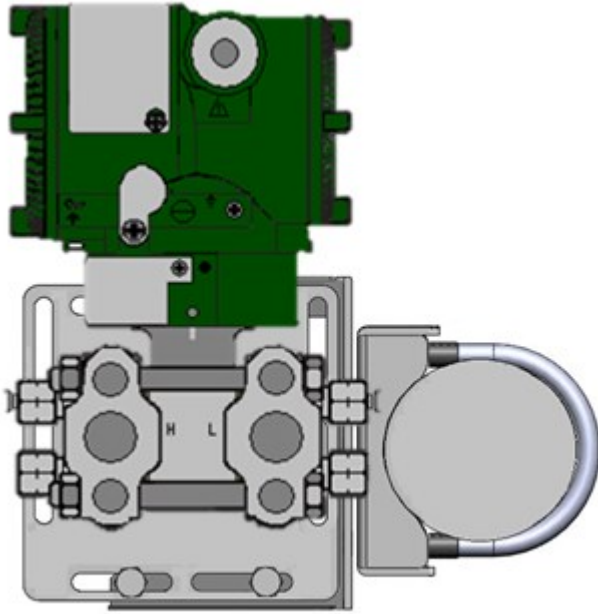


Figure 3: EJA110E with Universal L-Bracket (Horizontal Pipe)

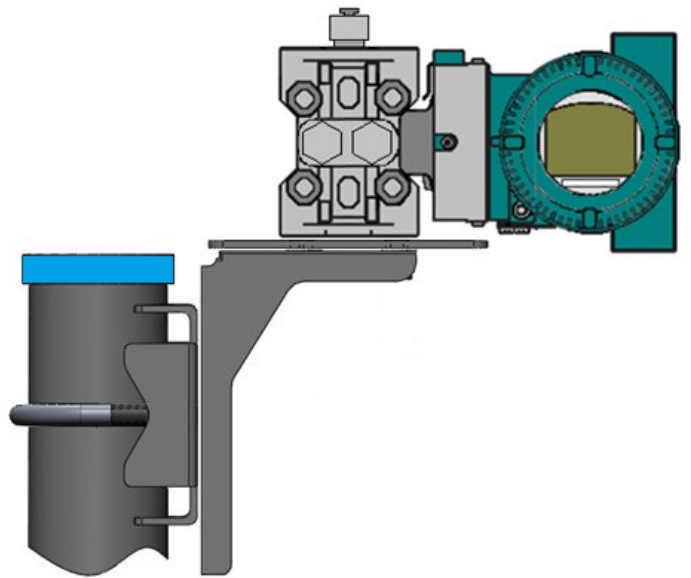


Figure 4: EJX110A with Universal L-Bracket (Vertical Pipe)