

FieldMate User Registration Procedure

Introduction

FieldMate User registration is needed from Home page of Yokogawa Electric Corporation.

Purchased License number registration and Activation key issue, which needs to make FieldMate functional, are performed on user registration.

And it states how to key in Activation key for permanent use.

User registration

It needs to go in Partner Portal of Yokogawa Electric Corporation, for "FieldMate User Registration".

Please go to the following URL.

FieldMate/PRM/Device Files user site (Pages for FieldMate in the Partner Portal)

<<https://partner.yokogawa.com/global/fieldmate/>>

For first user, Partner Portal Member registration and Member login are requested from Top window.

The screenshot shows the Yokogawa Partner Portal interface. At the top, there is a blue header with the Yokogawa logo and 'Partner Portal' text. Below the header, a blue banner reads 'FieldMate/PRM/Device Files User site'. A red box highlights the text 'Partner Portal Member registration needs to be completed beforehand' with a red arrow pointing to the 'License registration/Issuing activation key' link. Below this, there are three main content areas: 'License registration/Issuing activation key', 'Product information · Download page', and 'Contact Us'. The 'License registration/Issuing activation key' area lists: 'License registration and confirmation', 'Confirmation of activation key', 'Issuing new activation key', and 'Reissuing the activation key'. The 'Product information · Download page' area lists: 'Download documents, revision information, troubleshooting information, and more.' The 'Contact Us' area lists: 'E-mail: Contact-PRM-FieldMate@ml.jp.yokogawa.com'.

License

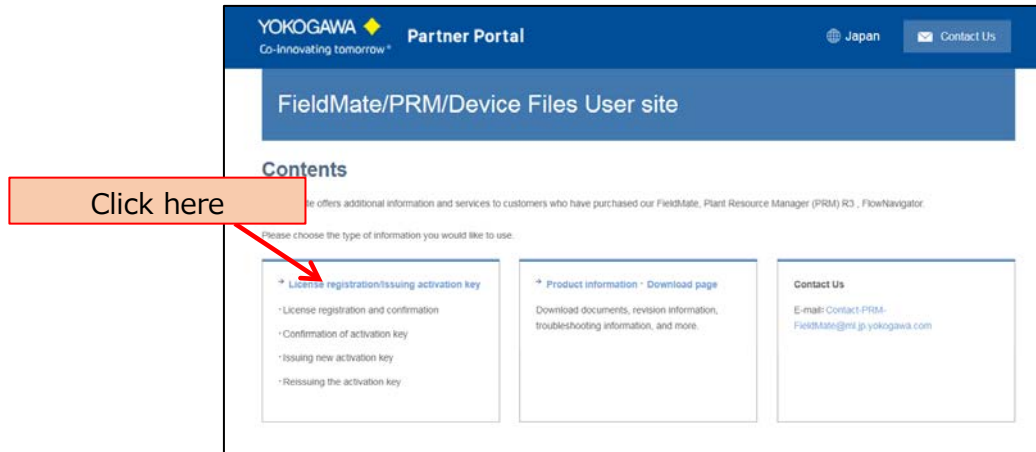
FieldMate license registration is required.

On license number registration, Activation key will be issued for specific PC.

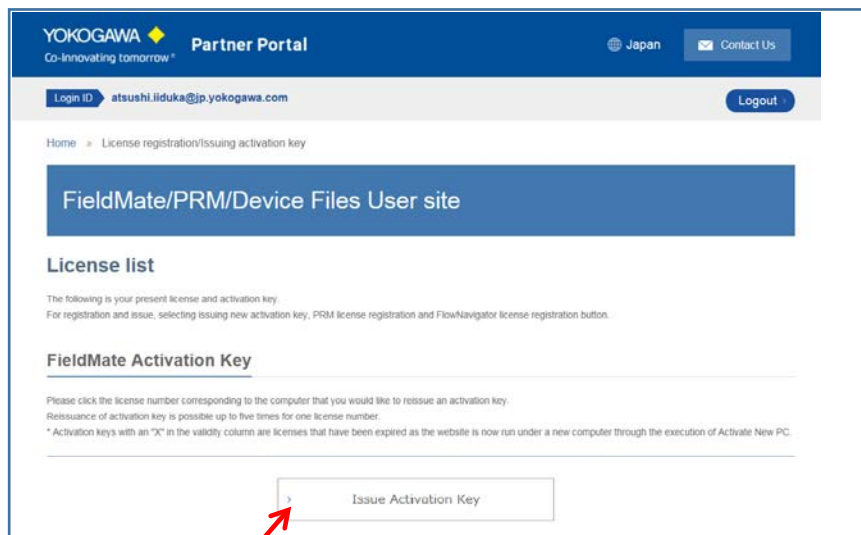
1. Open license registration page.

Access FieldMate/PRM/Device Files User site, Click "License registration activation key"

FieldMate/PRM/Device Files User site <<https://partner.yokogawa.com/global/fieldmate/>>



2. License registration and Activation key issue will be performed in this page.



If you need to issue Activation key again to license number previously registered, please select it from License list which shows all the registered license number. Click the one and it will be linked to the relating pages.

3. To issue Activation key, items below are to be keyed in.

YOKOGAWA Partner Portal
Co-Innovating tomorrow Japan Contact Us

FieldMate/PRM/Device Files User site

License registration/Issuing activation key

Please enter your License Number/PC Specific Information(Volume Serial Number) and c
* (an asterisk) denotes a required field.

Product type * FieldMate License PRM License FlowNavigator License

License Number * Please enter your information.

PC Specific information (Volume Serial Number) * Please enter your information.

License registration/ Issuing activation key

Select "FieldMate License"

"PC volume serial number "can be checked in FieldMate (Please refer to the next page)

Click here after necessary items are keyed in.

4. The issued Activation key are displayed on license registration.
Please keep and record Activation key for FieldMate registration.
And, in License list, Activation key can be confirmed.

License list

The following is your present license and activation key.
For registration and issue, selecting issuing new activation key, PRM license registration and FlowNavigator license registration button.

FieldMate Activation Key

Please click the license number corresponding to the computer that you would like to reissue an activation key.
Reissuance of activation key is possible up to five times for one license number.
* Activation keys with an "X" in the validity column are licenses that have been expired as the website is now run under a new computer through the execution of Activate New PC.

License Number	Validity	PC Specific Information	Activation Key	Registration Date	The number of issue
██████████	V	██████████	██████████	2012/05/07	2
██████████	V	██████████	██████████	2011/03/16	2
██████████	V	██████████	██████████	2007/08/30	3
██████████	V	██████████	██████████	2007/06/30	2

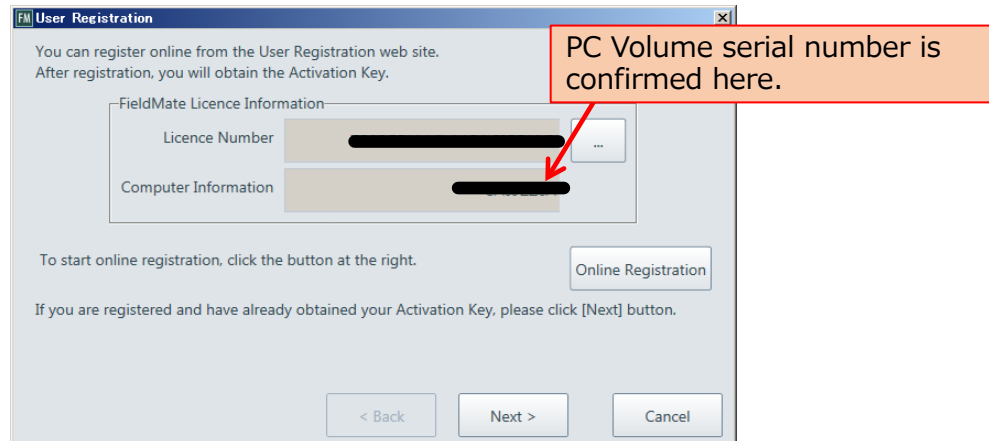
Issue Activation Key

Activation of FieldMate

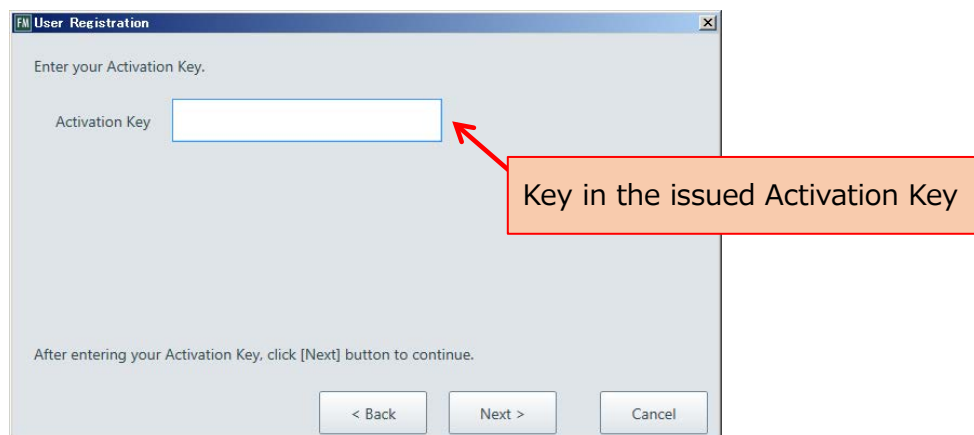
Registering Activation key to FieldMate, it will be use permanently.

1. Start FieldMate

Open "User Registration" from "Help" on the menu bar



2. Click "Next" and move to Activation key input window.



3. Input Activation key and click "Next". Activation is finished.

Support

If you have any inquiry about FieldMate, please contact to FieldMate Support Desk with the following e-mail address.

FieldMate Support Desk

<field-mate-support-desk@cs.jp.yokogawa.com>