

General Specifications

FIELD EYE III

FC33E (Explosion-proof),
FC33U (Outdoor)
Full HD IP type
Pan Tilt Zoom type CCTV Camera

GS 85A7C01-22EN

■ GENERAL

► Model FC33:

- FC33 Series explosion-proof or outdoor pan tilt zoom type Color Camera is a self-contained, compact and lightweight.
- Most suitable for installation in high place and/or confined spaces.
- Designed to continuously operating in the most adverse environments of offshore and onshore oil & gas industries, marine and heavy industrial sectors
- High-sensitivity that permits whole day continuous monitoring without special lighting. (Day/Night camera)



► Full HDIP type:

- Camera image comes in by Full HD:1080 pixels, 60(fps)
- IP (Internet Protocol)

► Options:

- Hood/Shade
- Integrated Wiper
- Upright/Inverted Installation

■ MODEL AND SUFFIX CODES



| Model | Suffix Code | Option Code | Description |
|--|-------------|-------------|---|
| FC33E | | | Explosion-proof pan-tilt zoom color camera |
| FC33U | | | Weather-proof pan-tilt zoom color camera |
| Camera type | -D | | Full HD: High-sensitivity 1/2.8" CMOS, 1920x1080 pixels , 30x optical zoom |
| Wiper | W | | With wiper |
| | N | | Without wiper |
| Control type | E | | 10BASE-T 100BASE-TX (Full HDIP type) |
| Cable Entries (Explosion-proof Certification) *1 | 0 | | G1/2 female thread, Cable glands on the Base Box (Explosion-protection in Japan only) |
| | 1 | | M20 female thread, Cable glands on the Base Box (ATEX/IECEX Certification) |
| | 2 | | M20 female thread, Cable glands on the Base Box (CSA Certification) *2 |
| Installation | S | | Upright |
| | U | | Inverted |
| Additional Specification code | /T | | Name tag plate: Up to 15 letters (alpha-numeral combination code)can be specified |
| | /SHD | | Hood (Upright) for Full HDIP type |
| | /UHD | | Hood (Inverted) for Full HDIP type |
| | /SD | | Shade(Only Upright Installation) |
| | /L10 | | Cable length 10m (2 cables lengths set 10m from 5m of std. length) |
| | /ADP | | Mounting adapter plate for the previous FC13 |

*1 For the cable entry code of FC33U (Outdoor), specify 0 for Japan and 1 for overseas.

*2 CSA explosion-proof certified products cannot be ordered.

■ STANDARD SPECIFICATIONS

Full HDIP type:

| Item | | Description |
|----------------|--|--|
| Video | Image Sensor | 1/2.8" CMOS |
| | Effective Pixels | Up to 1920x1080p. (2.13 Megapixels) |
| | Video S/N | > 50 dB |
| | White Balance | ATW (auto tracing white balance) |
| | Zoom Magnification | (30x optical) x (12x digital) |
| | Lens | f: 4.3mm - 129mm, F1.6 - 4.7 (with auto focus) |
| | Angle of View | 63.7° (wide-angle) to 2.3° (telephoto) |
| | Compression | H.264, MJPEG |
| | Frame rate | Maximum 60 fps |
| | Minimum illumination | Normal Sensitivity ICR-Off mode 0.1lux (1/30 sec, 50%) 0.013 lux (1/4 sec, 1/3 sec, 50%) ICR-On mode 0.006 lux (1/30 sec, 50%) High Sensitivity ICR-Off mode 0.01 lux (1/30 sec, 50%) 0.0013 lux (1/4 sec, 1/3 sec, 50%) ICR-On mode 0.0015 lux (1/30 sec, 50%) 0.0008 lux (1/4 sec, 1/3 sec, 30%) |
| I/O | LAN Interface *1 | Ethernet (Ethernet comply with 10BASE-T IEEE 802.3, 100BASE-TX, IEEE 802.3u, higher than Cat5e cable) |
| | Client PC requirements | Windows10 (Browser: Microsoft Edge Chromium) *4 *5 |
| | Access control | Administrator / User (when network login via PC) |
| | Communication | ONVIF® (Profile S), Fieldeye command (Web application for Full HDIP type) |
| | Supported Protocols: | IPv4, TCP, UDP, HTTP, RTSP, RTP, NTP, SNMP, HTTPS; |
| Main Body | Housing Material | Die Casted SS316L (Stainless steel) no welding parts |
| | Finish | Electrolytic Polishing |
| | Weight | 20kg (except cable(s)) |
| | Cable Entry (2-port) | - For Multiple-cable input (LAN-cable and relay-connection lines are combined within one-cable. Std. length: 5m) - For Power-cable input (Std. length: 5m) |
| Mechanical | Pan Operation | 360° continuous and endless |
| | Tilt Operation | 180° (0±90°) |
| | Rotation Speed | Up to Pan-tilt 40°/sec |
| | Installation style | Upright / Inverted |
| Electrical | Rated Power Supply | 100VAC to 240VAC, 50Hz or 60Hz, 0.6A |
| | Maximum Power Consumption | Approx. 60VA |
| | Relay driving circuit | Single (1) contact, (Normally Open) Dry type interface, Max: DC48V, 100mA, provided by "JB" port(1) usually, |
| Environment | Operation Temperature/Humidity | -40°C to +60°C (-40°F to +140°F) / 20 to 95 %R.H. (Non-codensation) (except for 2-pigtailed cables) |
| | Storage Temperature/Humidity | -40°C to +60°C / 5% to 95% RH (at 40°C) |
| | Installation location | Maximum altitude of 2000 m |
| Others | Preset points | 128 points, Preset Accuracy: ±0.25° (PAN/ TILT) |
| | Wiper | Option |
| | Defroster | Standard equipment |
| Certifications | ATEX Flameproof "db" Dust-ignition "tb" *2 | CML 14 ATEX1097X (EN IEC 60079-0:2018, EN60079-1:2014, EN60079-31:2014) II 2GD Ex db IIC T5 Gb  Ex tb IIIC T100°C Db |
| | IECEx Flameproof "db" Dust-ignition "tb" *2 | IECEx CML 16.0096X (IEC 60079-0:2017, IEC 60079-1:2014, IEC 60079-31:2013) Ex d b IIC T5 Gb Ex tb IIIC T100°C Db, |
| | Degree of Protection of enclosure | IP66 |
| |  *3 | 2014/30/EU (EMC) EN55032:2015+A11:2020 Class A, EN50130-4:2011+A1:2014 Clause7, EN 61000-3-2: 2014, EN IEC 61000-3-2: 2019, EN 61000-3-3: 2013, EN 61000-3-3:2013+A1:2019 |
| | | 2014/35/EU (LVD) EN61010-1:2010+ A1:2019 (Indoor/Outdoor use, Pollution degree II, Overvoltage Category I) 2011/65/EU (RoHS) EN IEC 63000:2018 |

Note : This product is designed only for large industrial equipment.

*1 This is the specification for input/output of the built-in LAN interface board. Since there is wiring loss inside the main body, use the external connection within 50m including the attached composite cable length.

*2 Only when FC33E Cable Entries code is 1.

*3 Only for FC33U, or when FC33E Cable Entries code is 1.

*4 Installation of ActiveX attached to the product and execution in Internet Explorer mode are required.

*5 Operation has been confirmed with Windows10 Pro 64bit version.

■ BODY CONNECTION CABLES

Full HDIP type:

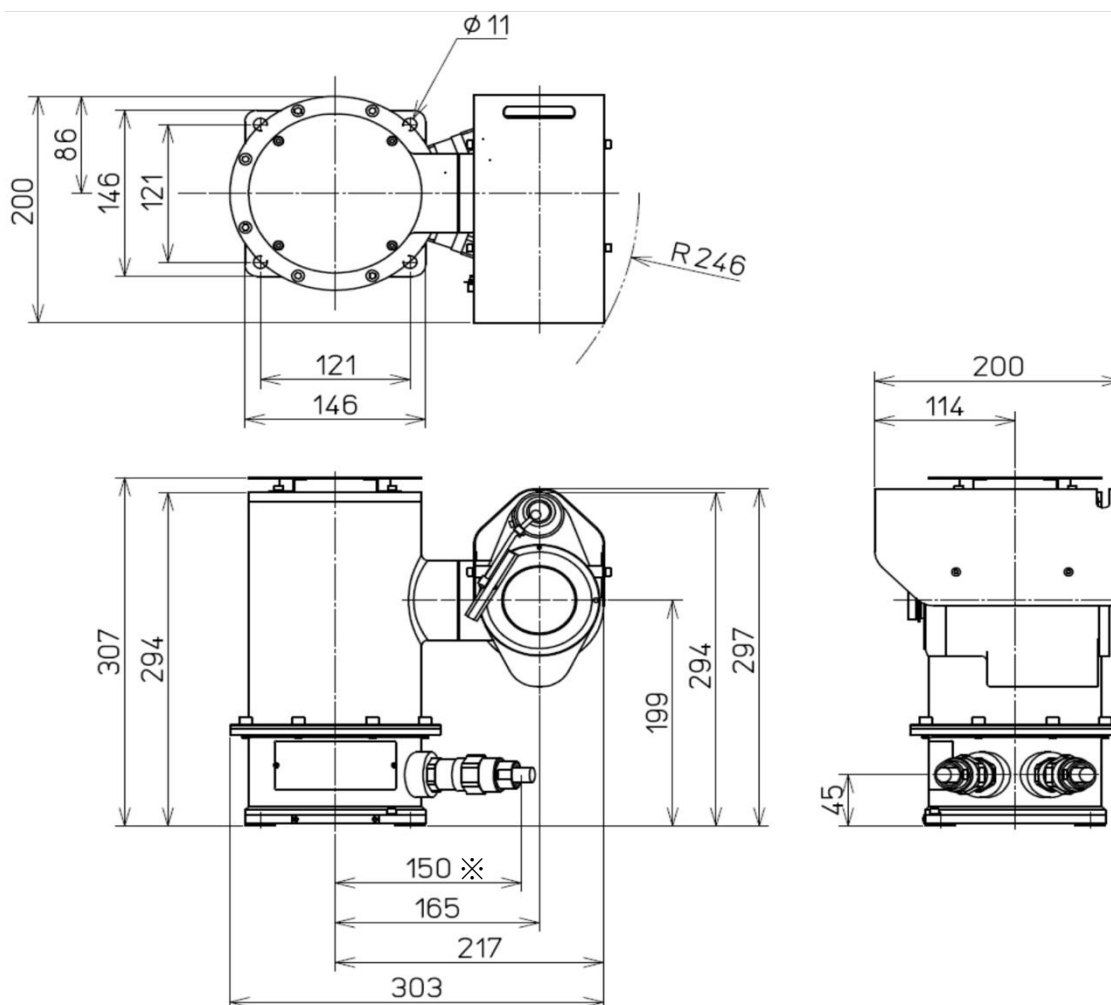
| Function | | Film Color (being covered) | | Symbol / Type |
|----------------|----------------|----------------------------|--------------------|---------------|
| Power Cable | | Brown | | L |
| | | Blue | | N |
| | | Green yellow | | PE |
| Multiple Cable | Ethernet comm. | Orange/White | Twisted pair cable | TX+ |
| | | Orange | | TX- |
| | | Green/White | Twisted pair cable | RX+ |
| | | Green | | RX- |
| | Relay contact | (annealed copper wire) | drain line | (Shield) |
| | | Blue | Twisted pair cable | N.O |
| | | White | | COM. |

● Connection cables (Standard lengths are 5m.)

- Any cabling work should be done at the customer's side in accordance with each specific requirement.
- Removing cable from the main body is not permitted due to violate the integrity of explosion proof certifications.
- **10m extension(s)** is available by /L10 option
- **Power Cable:** (AWG16 equivalent, each cable of three)
- **Composite Cable:** Composite of Ethernet comm. and relay-driving output signals (AWG24 equivalent, each twisted pair)

■ External dimensions of the Full HDIP Type

● Full HDIP / Upright Type FC33□-D□□□□S

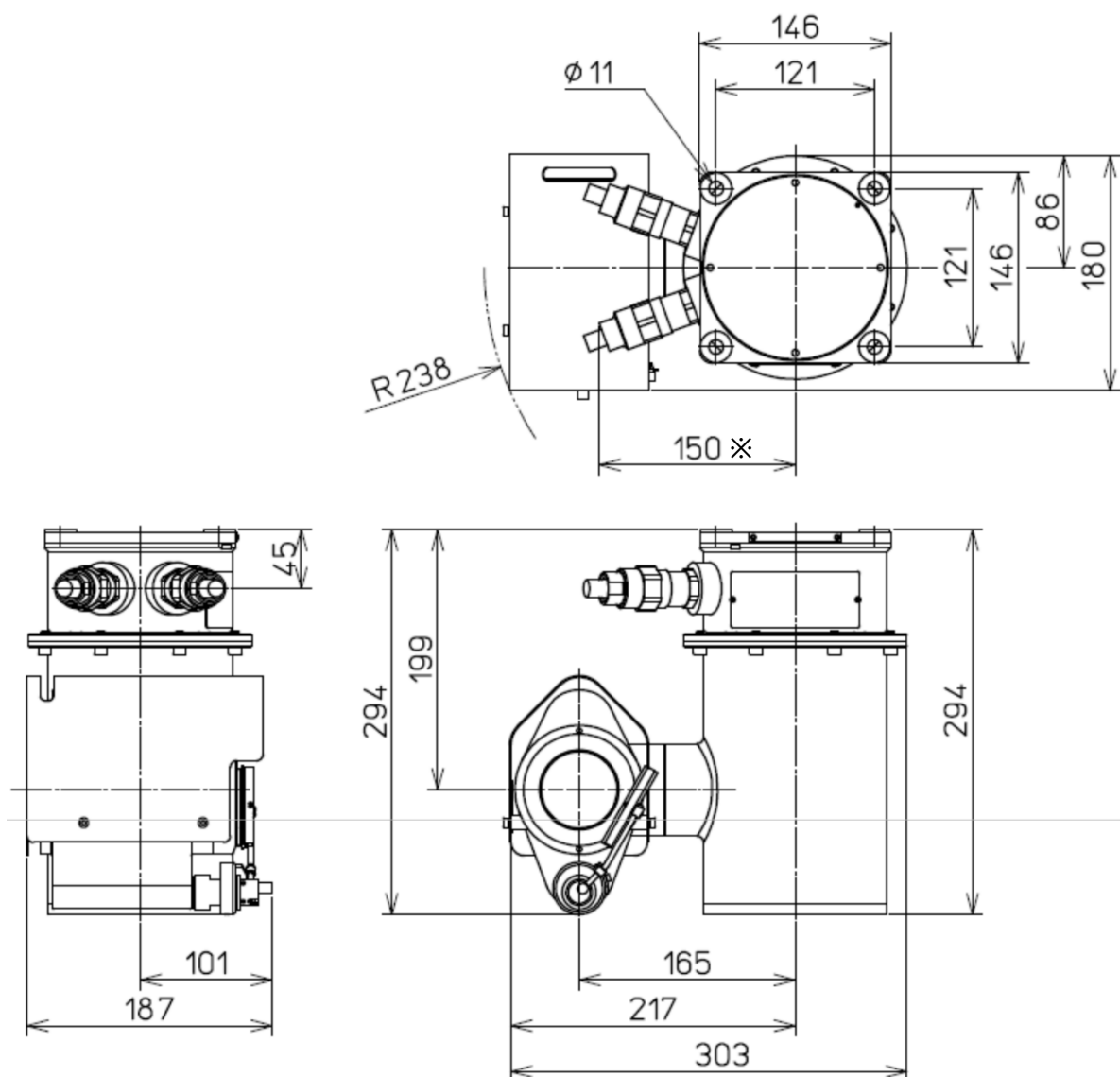


※ NOTE This description's size < 150, when FC33E/U-□□□□□ only

●Full HDIP / Inverted Type FC33□-D□□□□U

Note1: Effective depth 4 x M10-bolts within tapped-(threaded)-material: 6 or more

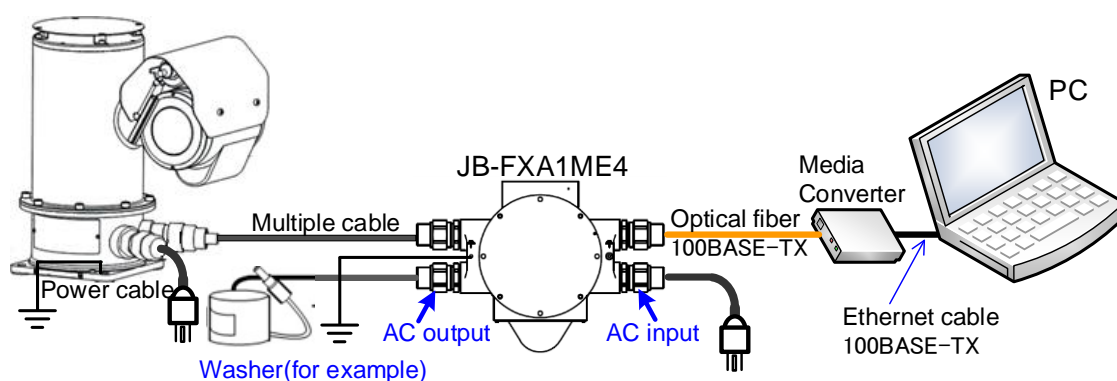
Note2: Fix certainly 2 cables form the main-body to the ceiling.



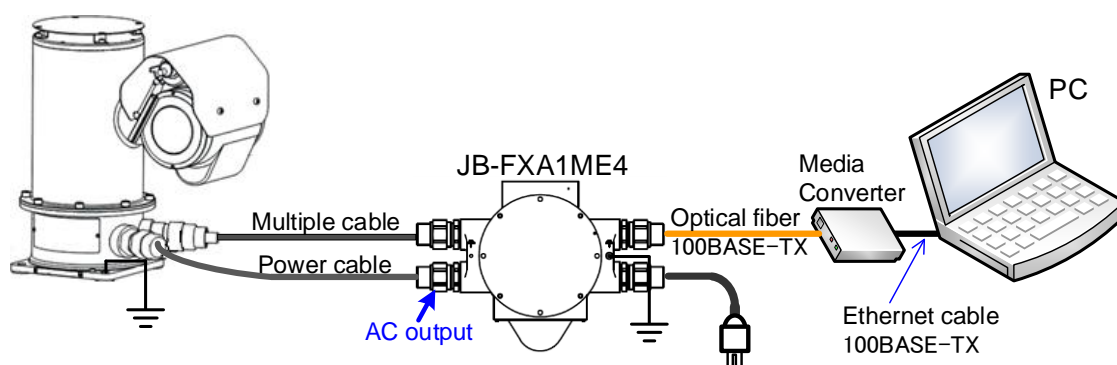
※ NOTE This description's size < 150, when FC33E/U-□□□□2□ only

EXTERNAL CONNECTION (EXAMPLE)

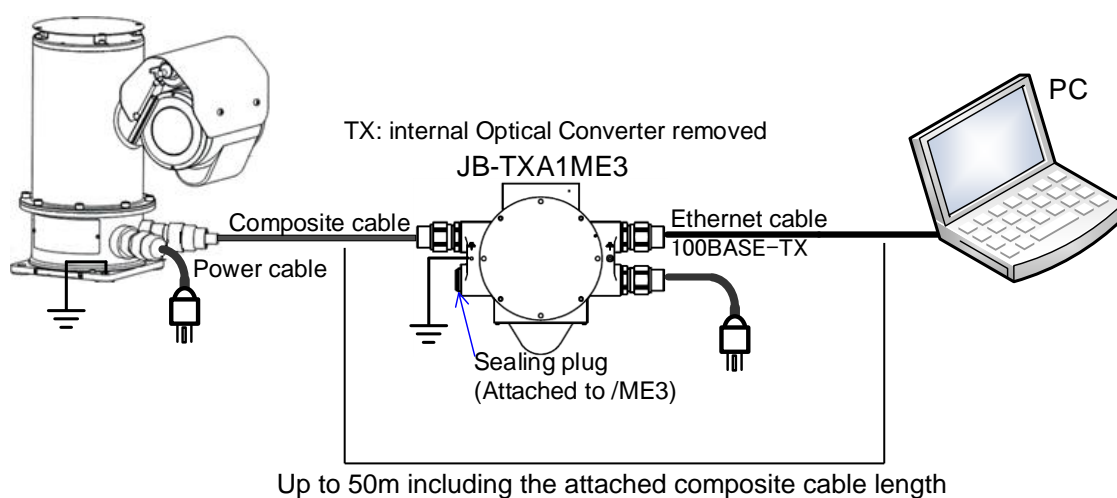
(1) Using an Optical fiber



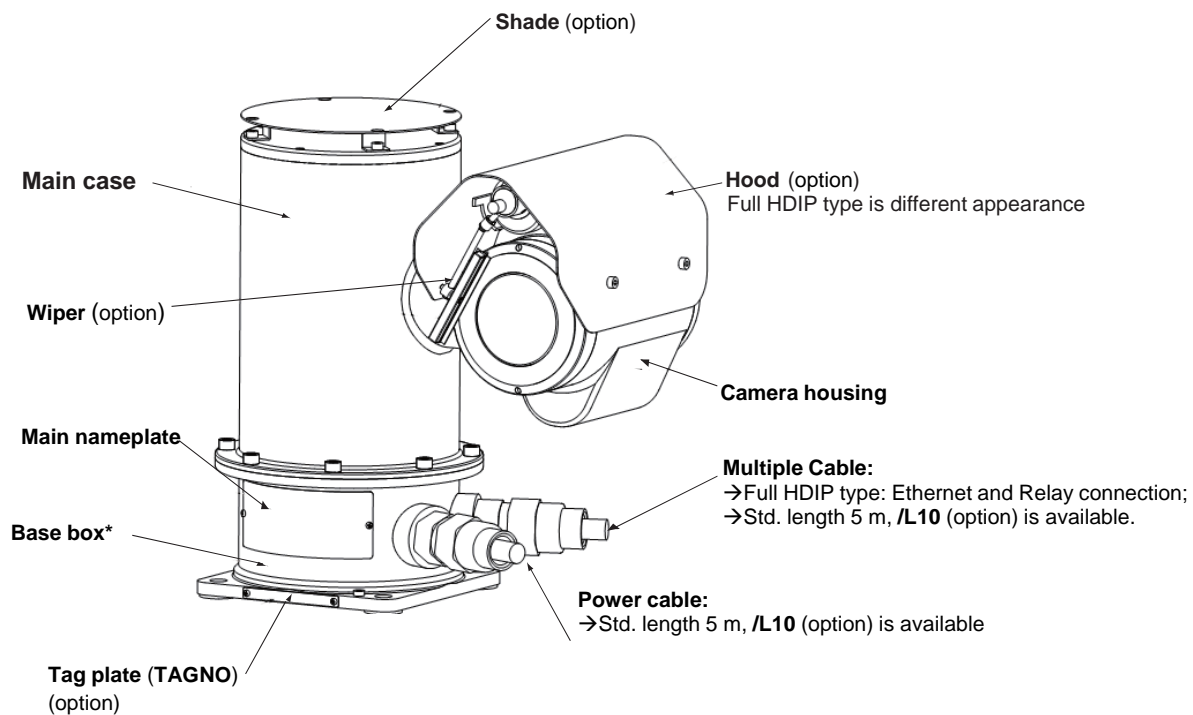
(2) Using Optical cable (without peripheral equipment)



(3) Using LAN cable (without peripheral equipment)



■ Designating option codes for making your order



NOTES): This product is manufactured by Mikami Corporation and sold by Yokogawa Electric Corporation.

NOTES): This specification sheet will be subject to change without prior notice.

NOTES): All product or company's names described in this document are trademarks or registered trademarks of each respective company.