

General Specifications

RY8 Relay Output Card for motor start-stop

JUXTA

GS 77J06B18-01EN

■ GENERAL

This nest storing type relay output card insulates DCS status output card and motor driving circuit and connects them through the relay.

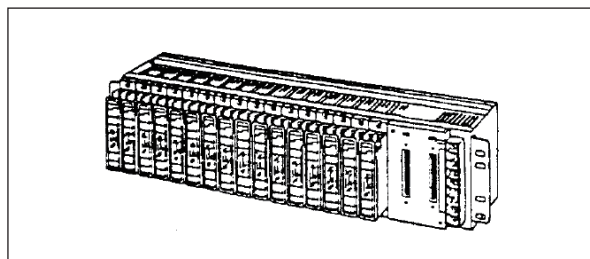
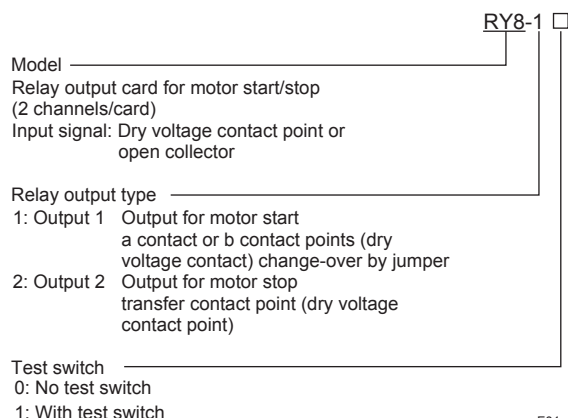
This card receives contact signal from DCS and at switching time when OFF→ON of contact signal, motor start relay contact (Output-1) should be set at ON for certain period of time.

And at switching time when ON→OFF of contact signal, motor stop relay contact (Output-2) should be set at ON for certain period of time.

Since one card stores 2 channels, start-stop of 2 motors can be done by one card.

- Output contact points consist of 2 contacts: 1 for motor start and the other for motor stop.
- Output 1: Dry voltage contact point output for motor start (a contact and b contact points change-over through jumper)
- Output 2: Dry voltage contact point output for motor stop (transfer contact point)
- Furnished with test switch convenient for debugging of DCS or operation checking and LED for status display.
- Provided with jumper to connect internally both commons of motor start-stop relay contacts to simplify wiring. When common use is not needed, commons can easily be separated through internal jumper pin.

■ MODEL AND SUFFIX CODES



■ SPECIFICATIONS

Structure: Nest storing card type to connect front by terminal and rear by connector. Terminal cover furnished.

Isolation: Between input•power supply - output 1 - output 2 (Non-isolation between outputs when common jumper is connected)

Test switch: AUT (Output contact point ON/OFF through outer contact point input)
OFF (Output contact point compulsorily OFF) in case of a contact.
ON (Output contact point compulsorily ON) in case of a contact.

LED indication: Light on (orange) when input is ON or test switch is ON

■ INPUT & OUTPUT

Input signal: Dry voltage contact point or open collector

Outer contact point specs.: 24 V DC, more than 30 mA

Output signal: Relay contact: 2 points

Contact point rating

| | |
|---------------------------|-------|
| Resistance load: 250 V AC | 3.0 A |
| 30 V DC | 3.0 A |
| 125 V DC | 0.2 A |
| Inductance load: 250 V AC | 1.5 A |
| 30 V DC | 1.5 A |
| 125 V DC | 0.1 A |

Max. working voltage: 250 V AC/125 V DC

Min. applicable load: 5 V DC 1 mA

* When driving inductance load, erase noise to protect contact point.

Output ON time width: About 2 seconds (fixed)

■ ORDERING INFORMATION

- Model and Suffix Codes: e.g. RY8-11

■ STANDARD PERFORMANCE

Insulation resistance: 100 M Ω (500 V DC) between
[Input•power supply] - CH1 output 1 - CH2
output 1 - CH1 output 2 - CH2 output 2 -
alarm terminal

(Non-isolation between outputs at time
when common is connected)

Voltage withstand: 1500 V AC/1 minute between
[Input•power supply] - CH1 output 1 - CH2
output 1 - CH1 output 2 - CH2 output 2 -
alarm terminal

(except between CH1 output 1 - CH1
output 2, CH2 output 1 - CH2 output
2•[Input•power supply] - alarm terminal)
500 V AC/1 minute between CH1 output 1
- CH1 output 2, CH2 output 1 - CH2 output
2•[Input•power supply] - alarm terminal
(Non-isolation between outputs at time
when common is connected)

Temperature: 0 to 50°C

Humidity: 5 to 90%RH (no condensation)

Power supply voltage: 24 V DC \pm 10% (ripple content
below 5% p-p)

Current dissipation: 24 V DC 60 mA

■ MOUNTING, SHAPE & ACCESSORIES

Mounting method: Store in exclusive use nest (RYH
or RYV)

Connection method

Input: Connector connection

Output 1, Output 2: M3.5 screw terminal connection

Alarm terminal: Connector connection

24 V relay power supply: Connector connection

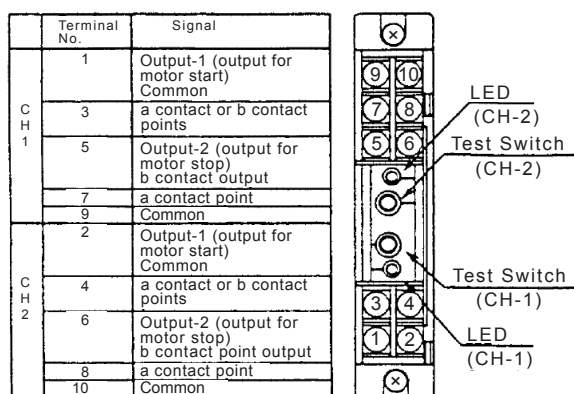
Material of terminal screw: Nickel plated iron
(fastening torque below 0.8 Nm)

External dimension: 108 × 21.4 × 129.6 mm (H × W
× D)

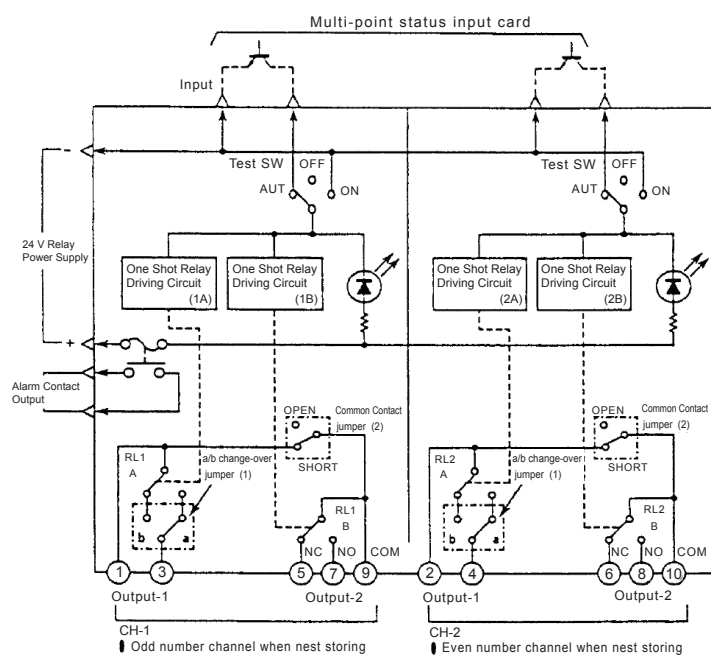
Weight: Abt. 150 g

Accessories: Tag number label 1

■ TERMINAL ARRANGEMENT

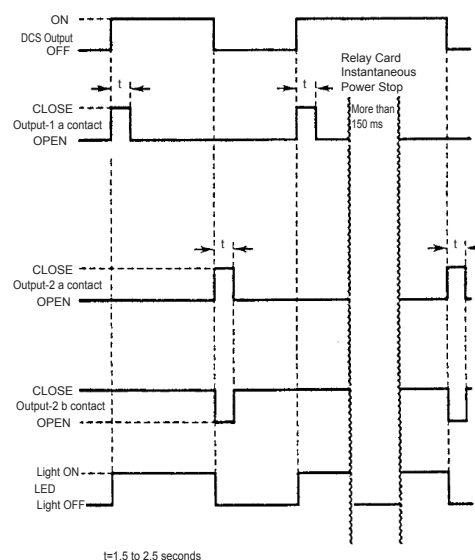


■ BLOCK DIAGRAM



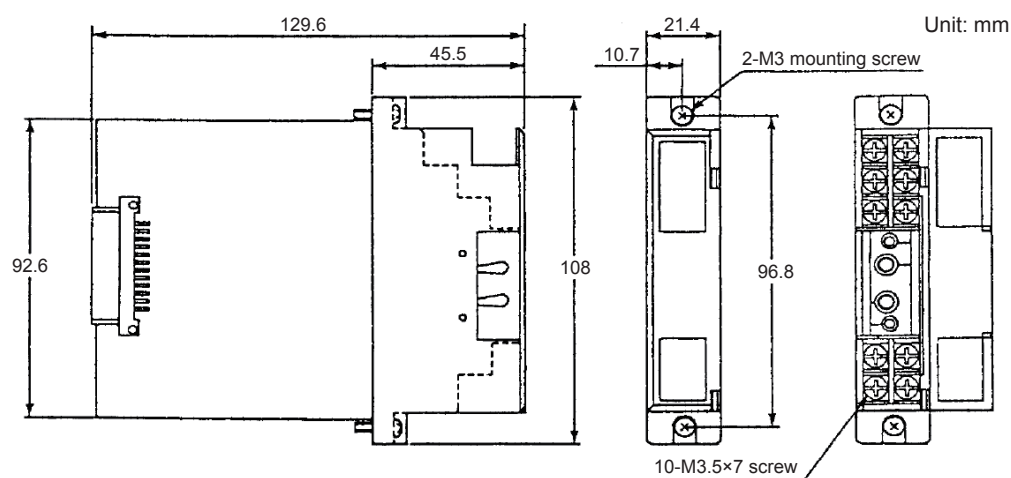
- (1) When shipment from factory, Output-1 a/b change-over jumper is in a contact point
 (2) When shipment from factory, common connect jumper is in a connecting status

Action



F03.ai

■ EXTERNAL DIMENSION



F04.ai