

General Specifications

Model WC0A
Output Isolator (Current I/O Type)

JUXTA

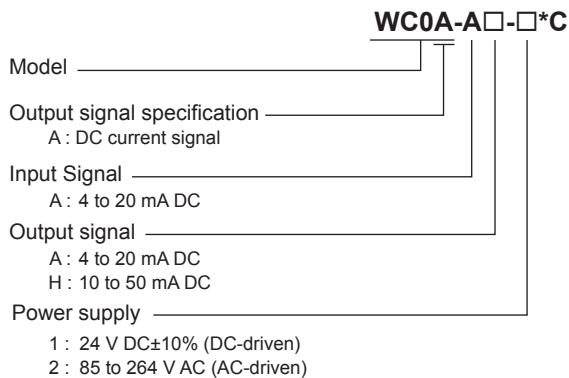
GS 77J09C10-01E

■ General

The WC0A is a compact, front terminal connection type isolator that converts 4 to 20 mA DC signals into isolated 4 to 20 mA DC or 10 to 50 mA DC signals.

- When a load circuit opens, input resistance increases rapidly to 32K or more to detect the open state through the input device.
- 2000 V AC withstand voltage specifications are available upon requests

■ Model and Suffix Codes



■ Ordering Information

Specify the following when ordering.

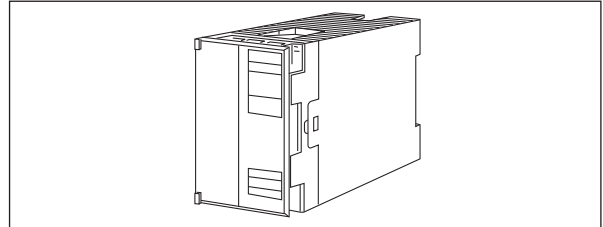
- Model and suffix codes :e.g. WC0A-AA-2*C

■ Input/Output Specifications

Input signal: 4 to 20 mA DC
Internal voltage drop:
5 V DC or less (4 to 20 mA DC output)
14 V DC or less (10 to 50 mA DC output)
Maximum allowable input: 40 mA DC or less
Output signal: DC current signal
Allowable load resistance:
750Ω or less (4 to 20 mA DC output)
220Ω or less (10 to 50 mA DC output)

■ Standard Performance

Accuracy rating:
±0.1% of span (4 to 20 mA DC output)
±0.3% of span (10 to 50 mA DC output)
Response speed: 10 ms, 63% response (10 to 90%)
Insulation resistance: 100 MΩ or more at 500 V
DC between input and output, input and power supply, input and ground, output and power supply, output and ground, and power supply and ground.
Withstand voltage:
DC drive 1500 V AC/min. between output and (input and power supply).
500 V AC/min. between input and power supply.



AC drive 1500 V AC/min. between input and output, input and power supply, input and ground, output and power supply, output and ground, and power supply and ground.

■ Environmental Conditions

Operating temperature range: 0 to 50°C
Operating humidity range: 5 to 90% RH (no condensation)
Power supply voltage: 85 to 264 V AC, 47 to 63Hz or 24 V DC±10%
Effect of power supply voltage fluctuations: ±0.1% of span or less for fluctuation within the operating range of power supply voltage specification.
Effect of ambient temperature change: ±0.2% of span or less for a temperature change of 10°C.
Current consumption: 24 V DC 60 mA
Power consumption: 100 V AC 6 VA

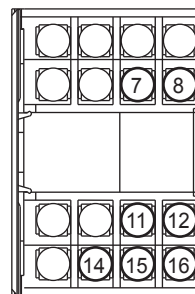
■ Mounting and Dimensions

Material: ABS resin (Case body)
Mounting method: Rack, Wall or DIN rail mounting
Connection method: M4 screw terminals
External dimensions: 72 (H) × 48 (W) × 127 (D) mm
Weight: DC; Approx.150g, AC; Approx.300g

■ Standard Accessories

Tag number label: 1
Mounting block: 2
Mounting screw: M4 screw x 4

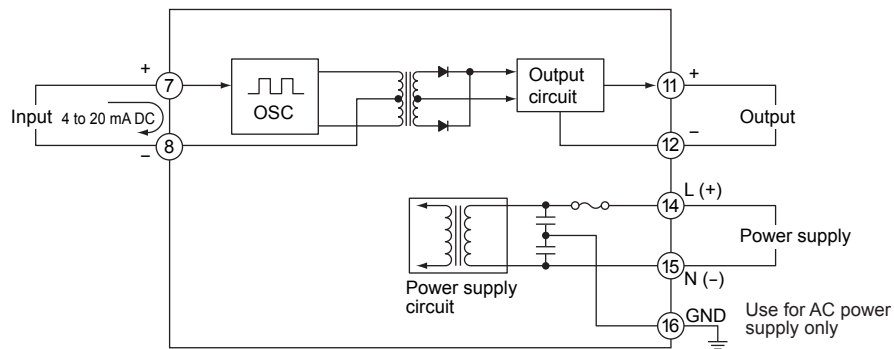
■ Terminal Assignments



7	Input	(+)
8	Input	(-)
11	Output 1	(+)
12	Output 1	(-)
14	Supply	(L+)
15	Supply	(N-)
16	Ground	(GND)*

*: Use for AC power supply only.

■ Block Diagram



■ External Dimensions

