

# General Specifications

Model WH0V  
Output Isolator (Voltage I/O Type)

**JUXTA**

GS 77J09H10-01E

## ■ General

The WH0V is a compact, front terminal connection type isolator that converts 1 to 5 V DC signals into isolated DC voltage signals.

- 2000 V AC withstand voltage specifications are available upon requests.

## ■ Model and Suffix Codes

	WH0V-□□-□*C
Model	_____
Output signal specification	_____
V : DC voltage signal	
Input Signal	_____
6 : 1 to 5 V DC	
Output signal	_____
1 : 0 to 10 mV DC	
2 : 0 to 100 mV DC	
3 : 0 to 1 V DC	
4 : 0 to 10 V DC	
5 : 0 to 5 V DC	
6 : 1 to 5 V DC	
7 : -10 to +10 V DC	
0 : (Custom order)	
Voltage signal	
(±10 V or less)	
Power supply	_____
1 : 24 V DC±10% (DC drive)	
2 : 85 to 264 V AC (AC drive)	

## ■ Ordering Information

Specify the following when ordering.

- Model and suffix codes :e.g. WH0V-66-2\*C

## ■ Input/Output Specifications

Input signal: 1 to 5 V DC

Input resistance: 1 MΩ during power on, 100 kΩ during power off

Maximum allowable input: ±30 V DC or less

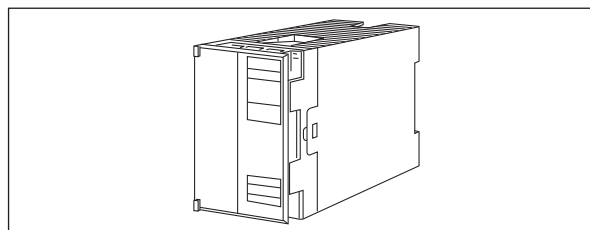
Output signal: DC voltage signal

Allowable load resistance:

DC voltage output	Allowable load resistance
0 to 10 mV	250 kΩ or more
0 to 100 mV	250 kΩ or more
0 to 1 V	2 kΩ or more
0 to 10 V	10 kΩ or more
0 to 5 V	2 kΩ or more
1 to 5 V	2 kΩ or more
-10 to +10 V	10 kΩ or more

Zero adjustment: -1 to +1%

Span adjustment: 95 to 105%



## ■ Standard Performance

Accuracy rating: ±0.1% of span

Response speed: 150 ms, 63% response (10 to 90%)

Insulation resistance: 100 MΩ or more at 500 V

DC between input and output, input and power supply, input and ground, output and power supply, output and ground, and power supply and ground.

Withstanding voltage:

DC drive 1500 V AC/min. between output and (input and power supply).

500 V AC/min. between input and power supply.

AC drive 1500 V AC/min. between input and output, input and power supply, input and ground, output and power supply, output and ground, and power supply and ground.

## ■ Environmental Conditions

Operating temperature range: 0 to 50°C

Operating humidity range: 5 to 90% RH (no condensation)

Power supply voltage: 85 to 264 V AC, 47 to 63 Hz or 24 V DC±10%

Effect of power supply voltage fluctuations: ±0.1% of span or less for fluctuation within the operating range of power supply voltage specification.

Effect of ambient temperature change: ±0.2% of span or less for a temperature change of 10°C.

Current consumption: 24 V DC 50 mA

Power consumption: 100 V AC 5 VA

## ■ Mounting and Dimensions

Material: ABS resin (Case body)

Mounting method: Rack, Wall or DIN rail mounting

Connection method: M4 screw terminals

External dimensions: 72 × 48 × 127 mm (H × W × D)

Weight: DC; Approx. 150 g, AC; Approx. 300 g

## ■ Standard Accessories

Tag number label: 1

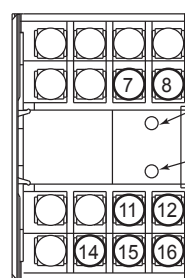
Mounting block: 2

Mounting screw: M4 screw x 4

## ■ Custom Order Specifications

	Voltage signal
Output range (DC)	0 to 10 V
Span (DC)	10 mV to 10 V
Zero elevation	0%

## ■ Terminal Assignments

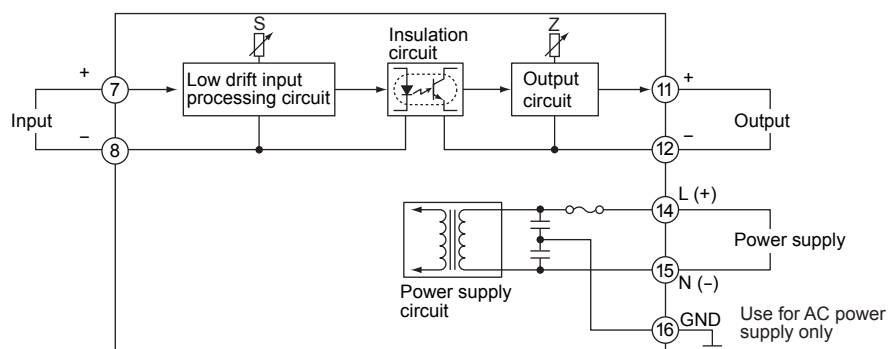


Terminal no.	Signals
7	Input (+)
8	Input (-)
11	Output 1 (+)
12	Output 1 (-)
14	Supply (L+)
15	Supply (N-)
16	Ground (GND)*

Z: Zero-adjustment volume  
S: Span-adjustment volume

\*: Use for AC power supply only.

## ■ Block Diagram



## ■ External Dimensions

