

General Specifications

Model AR2-ET
Arrester for Ethernet
(100BASE-TX / 10BASE-T)

JUXTA

GS 77M02N21-01E

■ General

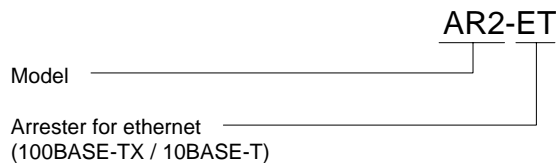
This high-quality arrester protects communication equipment connected to a network, configured with Ethernet (100BASE-TX/10BASE-T) or token ring, by absorbing induced lightning surge voltage generated from lightning discharges.

■ Cautionary Notes for Safe Use of the Product

The arrester may deteriorate or break if it receives surges. Arresters that have deteriorated below a specific level or are broken, may fail to meet their protection performance level and must therefore be replaced. It should be noted that the arrester may fail to safeguard the equipment under protection if it receives any surges exceeding its tolerance limit, such as direct lightning strokes.



■ Model and Suffix Codes



■ Instruction Required when Ordering

Model and suffix code

Example: AR2-ET

■ Standard Performance

Surge discharge withstand capacity:
500 A [at 8/20 μ s]
(total value for 8 wires)

Permissible surge voltage:
Between ground: 10000 V [1.2/50 μ s]

The values indicated in [] show standard lightning impulses specified in IEC 60-1.

Instrument side voltage limit:

Between lines: 40 V or less (at 10 kV, 1.2/50 μ s)

Between ground: 150 V or less (at 10 kV, 1.2/50 μ s)

Discharge starting voltage:

Between ground: 65 V DC

Modular: RJ-45 (8-wire)

Maximum transmission rate: 100 Mbps

Temperature: -10 to +60°C

Humidity: 5 to 90% RH (no condensation)

■ Mounting and Appearance

Material: ABS resin UL94-HB (case unit)

Connecting method: Modular jack RJ-45
(8-wire)

Grounding: JIS Class D grounding (100 Ω or less)

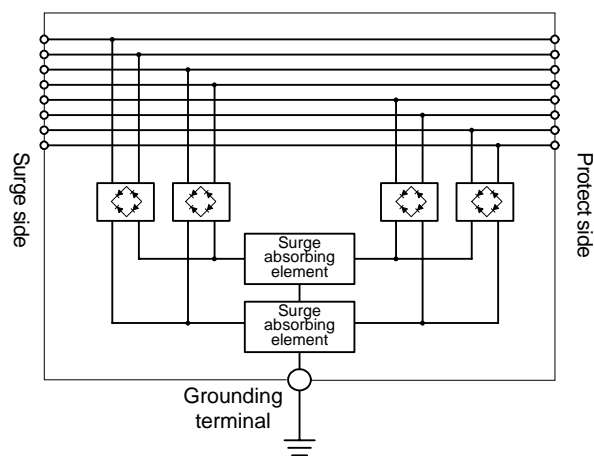
External dimension: 35×40×81 mm (H×W×D)

Weight: Approx. 60g

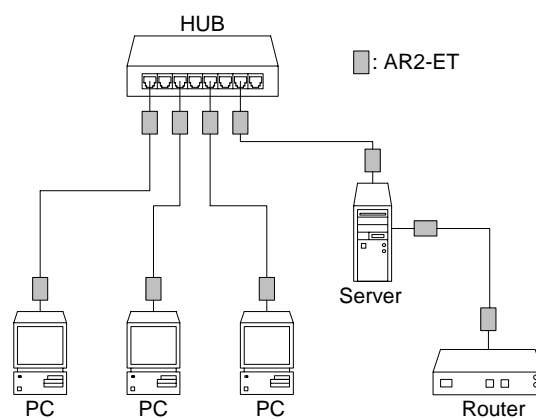
■ Accessories

- Modular cable (CAT.5)
- Grounding cable (2 mm², 0.3 m)

■ Block Diagram



■ Wiring



■ External Dimension

