

Instruction Manual

Model WTU-08 Power Distributor Unit

JUXTA

1. INSPECTION

This unit has been thoroughly tested at the factory before shipment. When you receive it, visually inspect it for damage and check the accessories.

1.1 Model number and specification check

Check to see the model number and specification on the nameplate attached to the bottom face of the unit are as ordered.

1.2 Contents of the instruction manual

This instruction manual provides instructions on wiring and mounting methods of distributor unit.

2. GENERAL

This unit supplies power to JUXTA transmitter. It can be mounted on rack, DIN rail and wall. Supplying power to transmitter through connector makes easy for its maintenance.

Accessories :

Connector with wire	9
Base Assembly	1 set
(Bracket 1 pair,	
M4 screw ... 4, M3 screw ... 4)	

3. MOUNTING METHOD

3.1 Rack Mounting

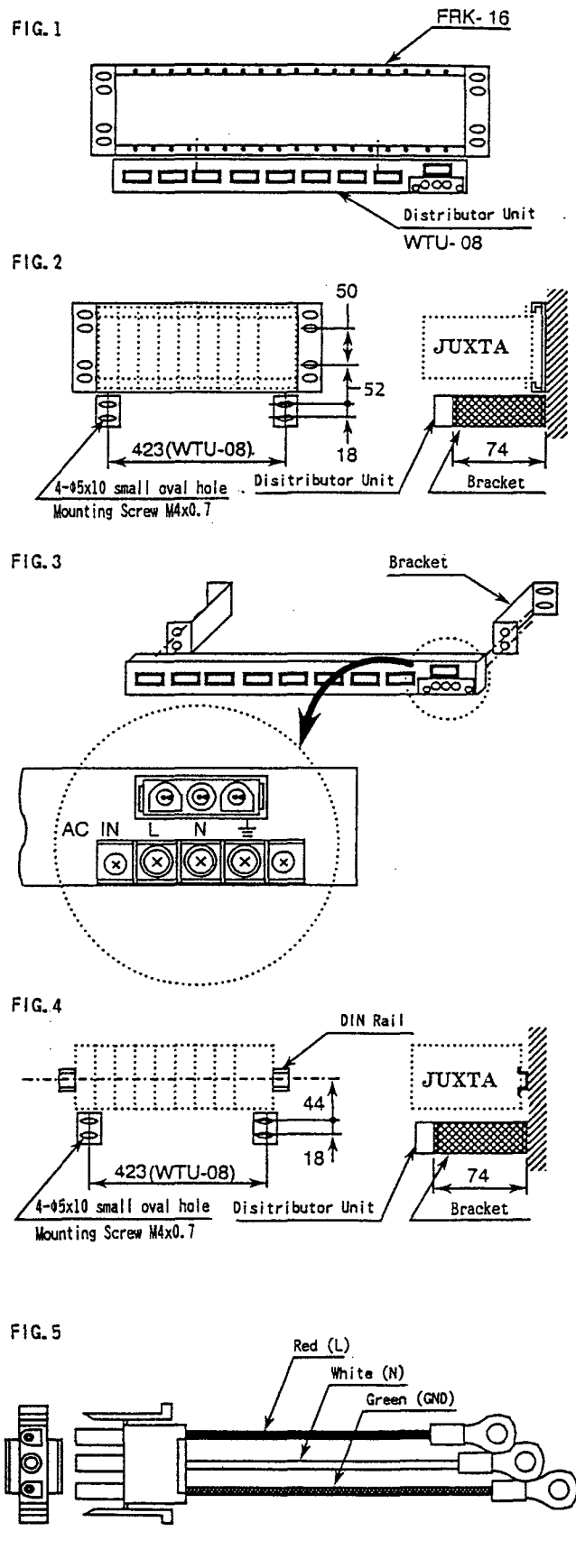
- ① Fix distributor unit to the bottom of panel (FRK-16) with screw. (See Fig.1)
- ② In case of wall mounting by using panel (FRK-16), fix metal fittings direct to the wall and install the distributor unit on these metal fittings. (See Fig. 2 and 3)

3.2 DIN Rail Mounting

When combining the distributor unit with the transmitter mounted on DIN rail, fix the metal fittings direct to the wall and install the distributor unit on these metal fittings. (See Fig. 3 and 4)

4. EXTERNAL WIRING

Use furnished connector with cable of distributor unit and connect crimp-on terminal (L red, N white, Green GND) at the top of the wire to transmitter power terminals 14(L), 15(N), 16(GND). Fig.5 shows furnished connector with wire.



Subject to change without notice for grade up quality and performance.

YOKOGAWA 
Yokogawa Electric Corporation

Network Solutions Business Division
2-9-32, Nakacho Musashino-shi, Tokyo, 180-8750 Japan
Phone: (81)-422-52-7179 Fax: (81)-422-52-6793