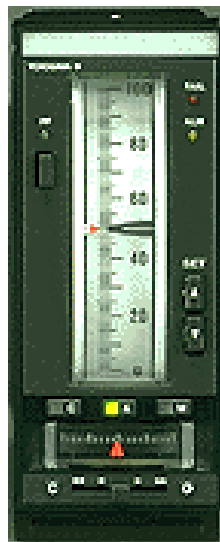


YS80/YS100 Retrofit

Overview

Yokogawa enjoyed strong sales of its line of YS80 instruments from their inception in 1980 to discontinuation in 2008. Thousands of the SLCD (single loop controller) and SLPC (programmable controller) were sold in the United States. As parts began to become scarce, the next generation of high-end controller was designed and released as the YS100 series. Debuting in 1992, the YS150 (single loop controller) and the YS170 (programmable controller) sold well until their discontinuation in 2008. With the sales release of the latest in YS family, the YS1000 series, it was necessary to create an easy migration path for the current installed base of aging YS80 and YS100 series units.



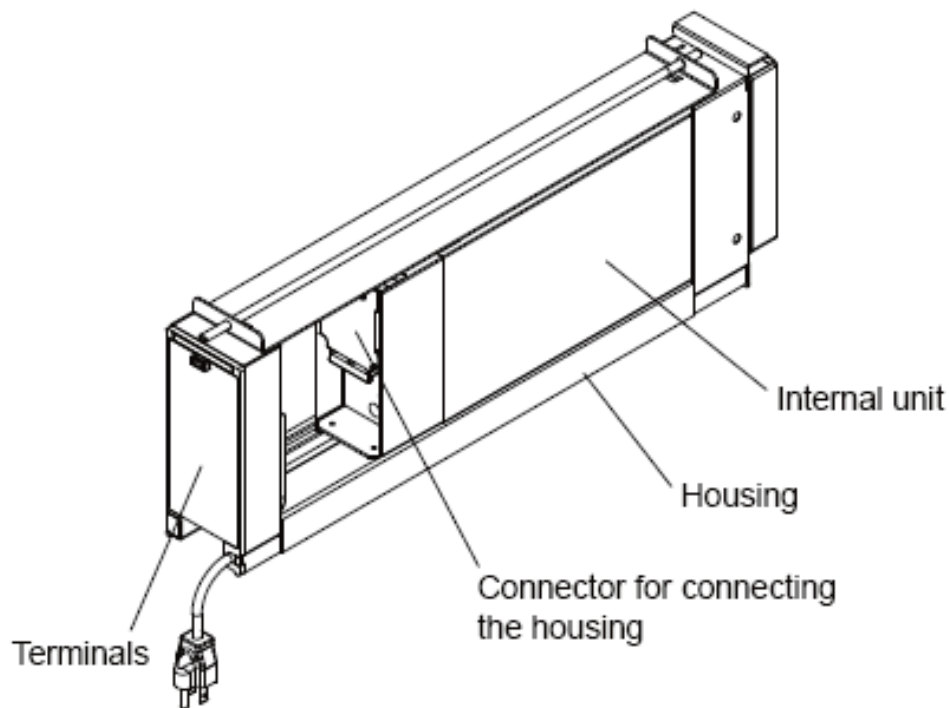
Retrofitting Legacy YS Controllers

When it comes to replacing existing controllers, one of the biggest complaints heard from customers is that they do not want to have to do any rewiring. With the introduction of the YS1000 series, the need to rewire will be eliminated.

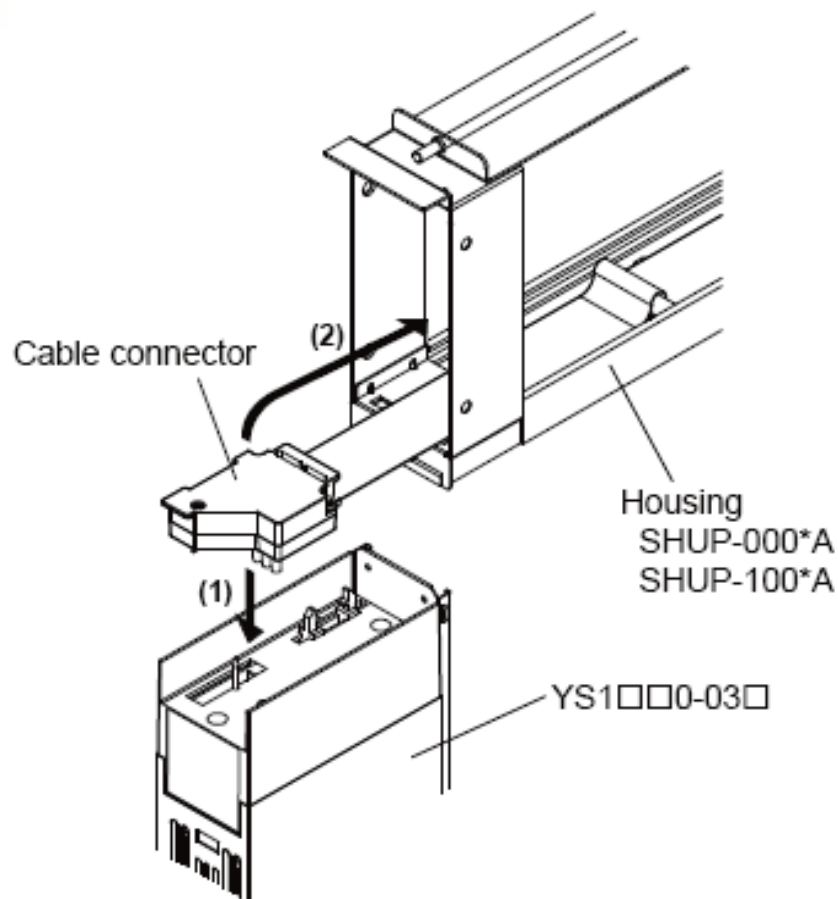
Replacing a YS80 Instrument (SLPC or SLCD)

Replacing a YS80 instrument requires no rewiring at all. This is accomplished by actually reusing the YS80 housing and terminal block. The old unit is slid out and disconnected from it's housing.

Compatible Type for YS80 Internal Unit (YS1□□0-03□)

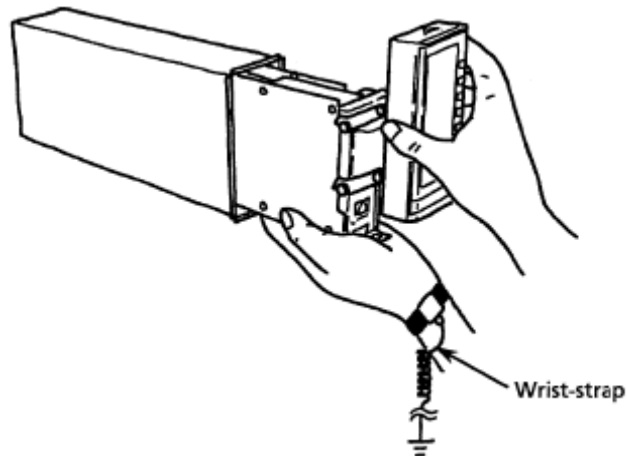


When ordering the replacement YS1000 unit, it is necessary to order the proper unit for this type of installation. The correct unit would be a YSXX0-03X. Installation of the new controller is just the reverse of removing the old YS80 instrument. It is very simple and can be completed in a matter of seconds. (see figure on next page)



Replacing a YS100 Instrument (YS170 or YS150)

As when replacing a YS80 instrument, a YS100 instrument requires no rewiring. This is accomplished by actually reusing the YS100 housing and terminal block. The old unit simply slides out of it's case leaving all of the wiring intact.



The replacement YS1000 unit must be ordered with the proper suffix code for this type of installation. The correct unit would be a YSXX0-02X. Installation of the new controller is just the reverse of removing the old YS100 instrument. It is very simple and can be completed in a matter of seconds.

What about the Ethernet and Expanded I/O Options

Unfortunately, when using the existing controller terminal blocks, these options are unavailable.

Any Questions? Please contact me.

Rob Sink
Product Specialist – Control Products
Network Solutions Group
(800) 888-6400 x4349
rob.sink@us.yokogawa.com