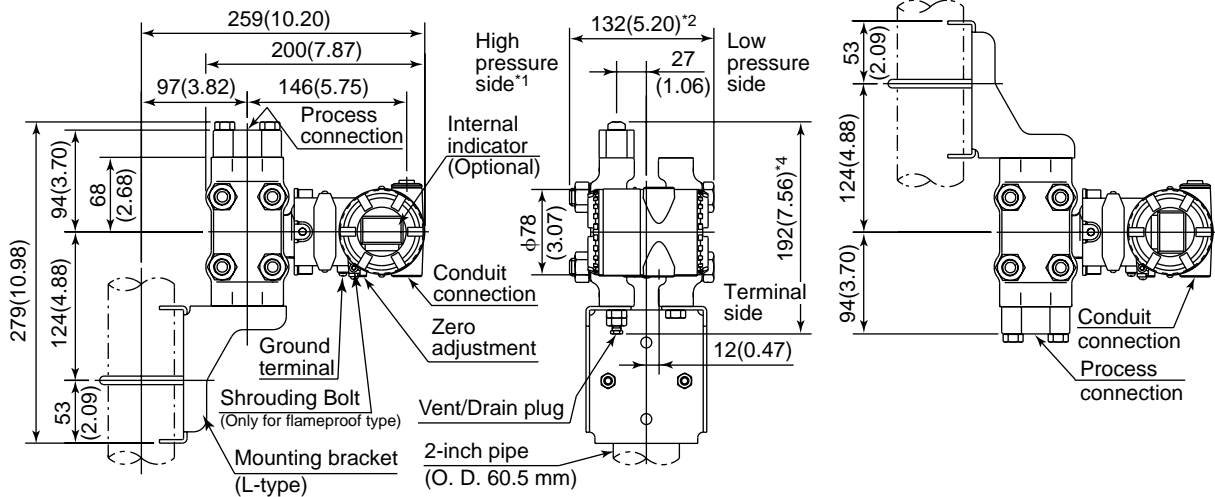


### ● Vertical Impulse Piping Type

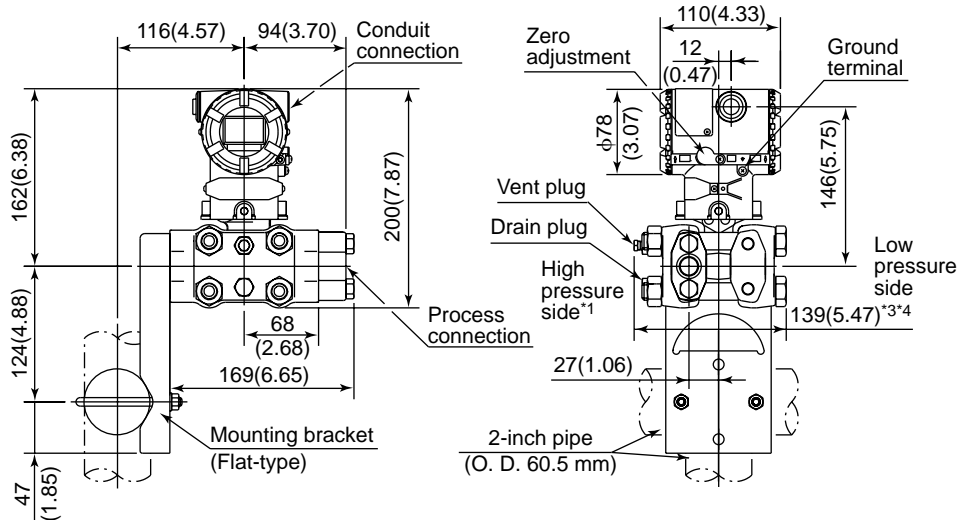
Unit: mm(approx. inch)

Process connector upside (Installation code 6)

Process connector downside (Installation code 7)



### ● Horizontal Impulse Piping Type (Installation code 9)



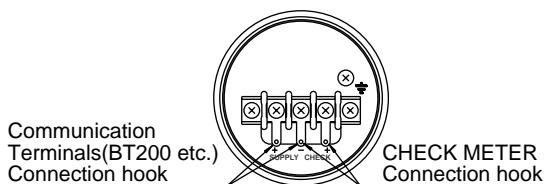
\*1: When Installation code 2, 3, or 8 is selected, high and low pressure side on above figure are reversed. (i. e. High pressure side is on the right side.)

\*2: Indicates dimensions for Capsule code C. The value is 154 mm(6.06 inch) for Capsule code D.

\*3: Indicates dimensions for Capsule code C. The value is 158 mm(6.22 inch) for Capsule code D.

\*4: When Option code K1, K2, K5, or K6 is selected, add 15 mm(0.59 inch) to the value in the figure.

### ● Terminal Configuration



### ● Terminal Wiring

SUPPLY $\pm$	Power supply and output terminal
CHECK $\pm$	External indicator(ammeter) terminal
$\equiv$	Ground terminal