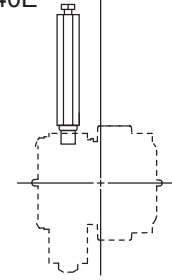
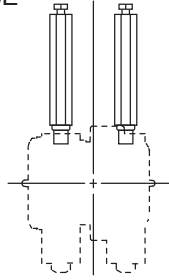
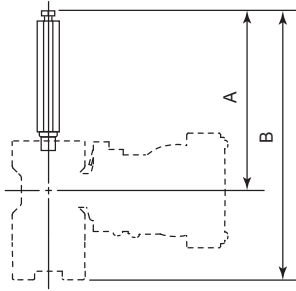


SD 01C25B13-01E

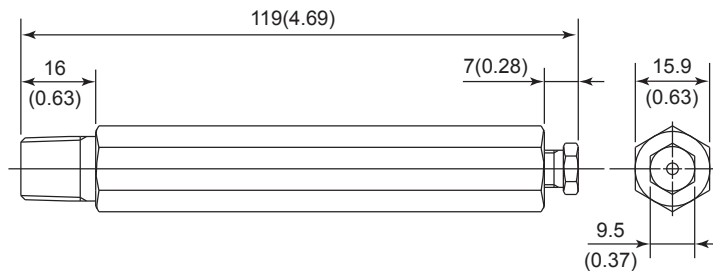
Unit: mm (approx. inch)

- EJX110A, EJX120A, EJX130A, EJX115A, EJX910A, and EJX930A
- EJA110E, EJA120E, EJA130E and EJA115E
- EJX310A, EJX430A, and EJX440A
- EJA310E, EJA430E, and EJA440E



Model	Dimensions A		Dimensions B	
	Option code /U1	Option code /U1/K1, /K2, /K5, or /K6	Option code /U1	Option code /U1/K1, /K2, /K5, or /K6
EJX110A, EJX310A, EJX430A, EJX910A, EJA110E, EJA310E, and EJA430E (Wetted Parts Material Code: S, except for Measurement Span Code F)	149(5.87)	160(6.3)	223(8.78)	234(9.21)
EJX115A and EJA115E (except for Measurement Span Code F)	149(5.87)	160(6.3)	231(9.09)	242(9.53)
EJX440A and EJA440E	171(6.73)	182(7.17)	267(10.51)	278(10.94)
EJX110A, EJX430A, EJA110E, and EJA430E (Wetted Parts Material Code: H, M, T, A, B, D or Measurement Span Code F)	154(6.06)	165(6.5)	233(9.17)	244(9.61)
EJX115A and EJA115E (Measurement Span Code F)				
EJX120A and EJA120E				
EJX130A, EJX930A, and EJA130E	176(6.93)	187(7.36)	277(10.91)	288(11.34)

- Long vent plug



- Long vent plug for oil-prohibited use (when combined with Option code K1, K2, K5, or K6)

