

Drawings

EJX510A, EJX610A, EJX530A
and EJX630A

DPharp **EJX**TM

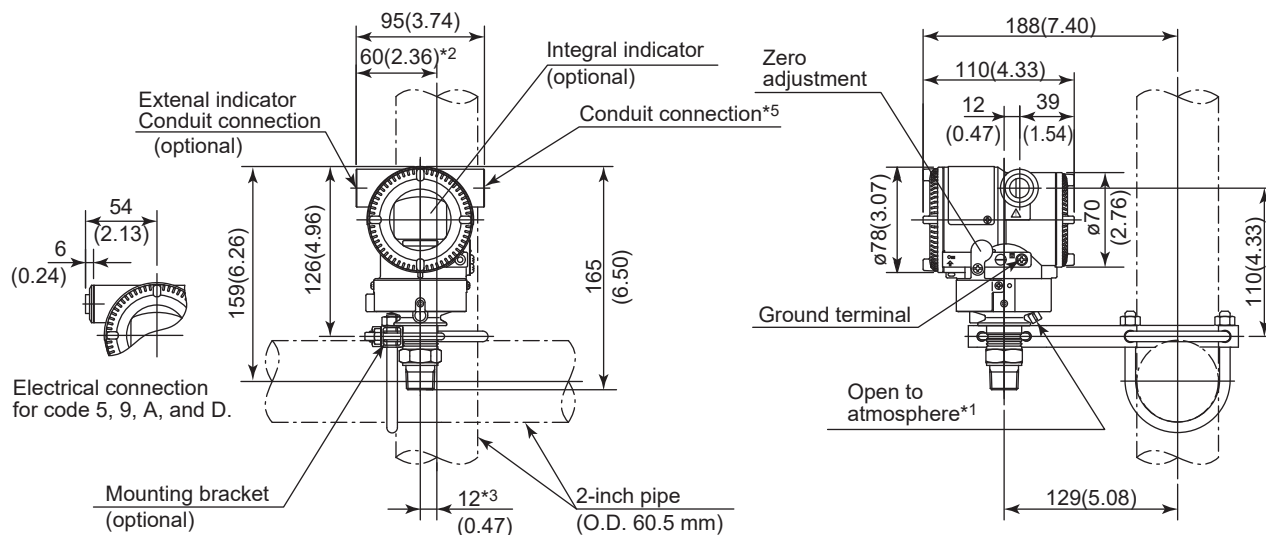
Absolute and Gauge Pressure Transmitter

SD 01C25F01-01E

[Style EJX510A, EJX530A: S2, EJX610A, EJX630A: S1]

Unit: mm (approx. inch)

● With Process connections code 7



*1: Only for EJX530A and EJX630A whose measurement span code is A, B, or C.

*2: 58 mm (2.28 inch) for measurement span code D.

*3: 11 mm (0.43 inch) for measurement span code D.

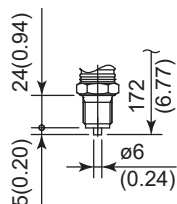
*4: When electrical connection code 7 or C is selected, a blind plug is protruded up to 8 mm from the conduit connection.

*5: When option code PP is selected, a blind plug is attached to the conduit connection on both sides.

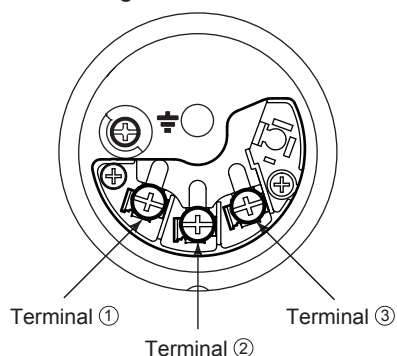
● With Process connections code 4



● With Process connections code 8 and 9



• Terminal Configuration



• Terminal Wiring

SUPPLY	+	①	Power supply and output terminals
	-	②	
CHECK	+	③	External indicator (ammeter) terminals*1*2
or	-	②	
ALARM	+	③	Status contact output terminals*2
	-	②	
		⏏	Ground terminal

*1: When using an external indicator or check meter, the internal resistance must be 10 Ω or less. A check meter or indicator cannot be connected when /AL option is specified.

*2: Not available for FOUNDATION Fieldbus and PROFIBUS PA communication types.