

# Drawings

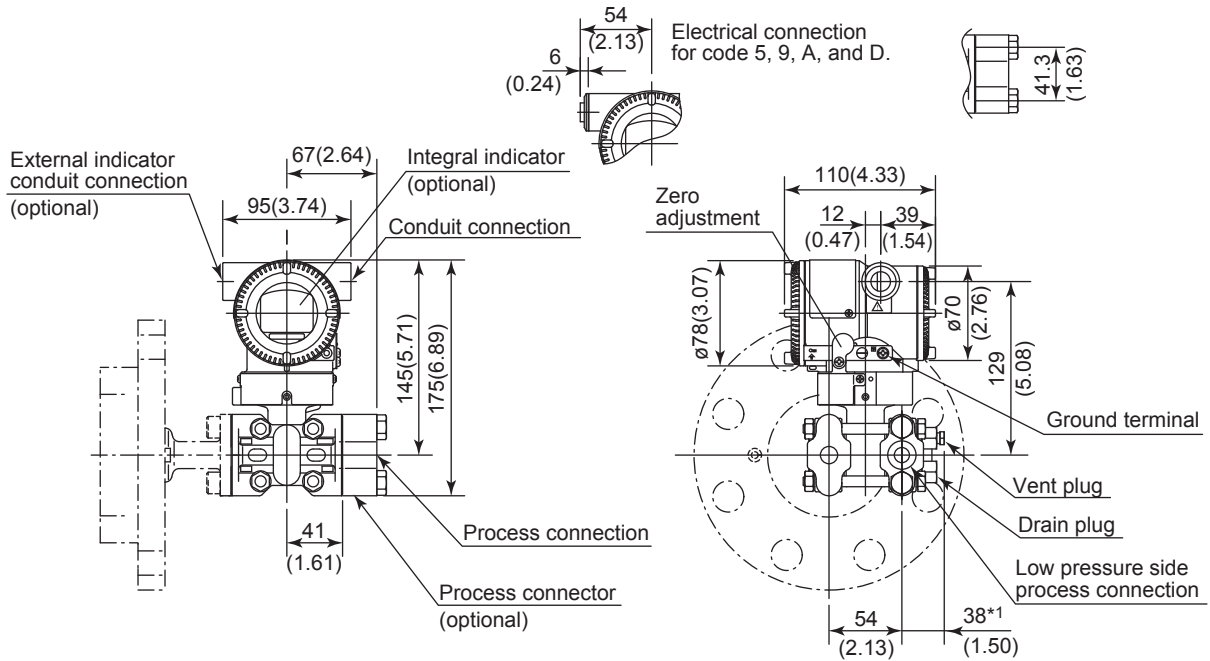
EJXC80A, EJAC80E  
 Diaphragm Seal System  
 EJX110A, EJA110E  
 Differential Pressure Transmitter  
 with Direct Mount Seal at High Pressure Side



SD 01C25W01-34EN

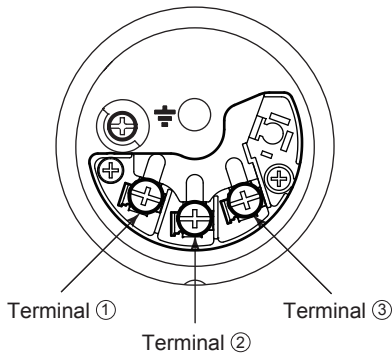
Unit: mm (approx. inch)

- EJXC80A-D20, EJAC80E-D20, EJXC80A-D30, EJAC80E-D30



\*1: When Option code K11, K12, K15, or K16 is selected, add 15 mm(0.59 inch) to the value in the flange.  
 \*2: When electrical connection code 7 or C is selected, a blind plug is protruded up to 8 mm(0.31 inch) from the conduit connection.

## Terminal Configuration



## Terminal Wiring

SUPPLY	+	①	Power supply and output terminals
	-	②	
CHECK	+	③	External indicator (ammeter) terminals*1*2 or
	-	②	
ALARM	+	③	Status contact output terminals*2 (when /AL is specified)
	-	②	
			⊥ Ground terminal

\*1: When using an external indicator or check meter, the internal resistance must be 10 Ω or less. A check meter or indicator cannot be connected when /AL option is specified.

\*2: Not available for FOUNDATION Fieldbus and PROFIBUS PA communication types.