

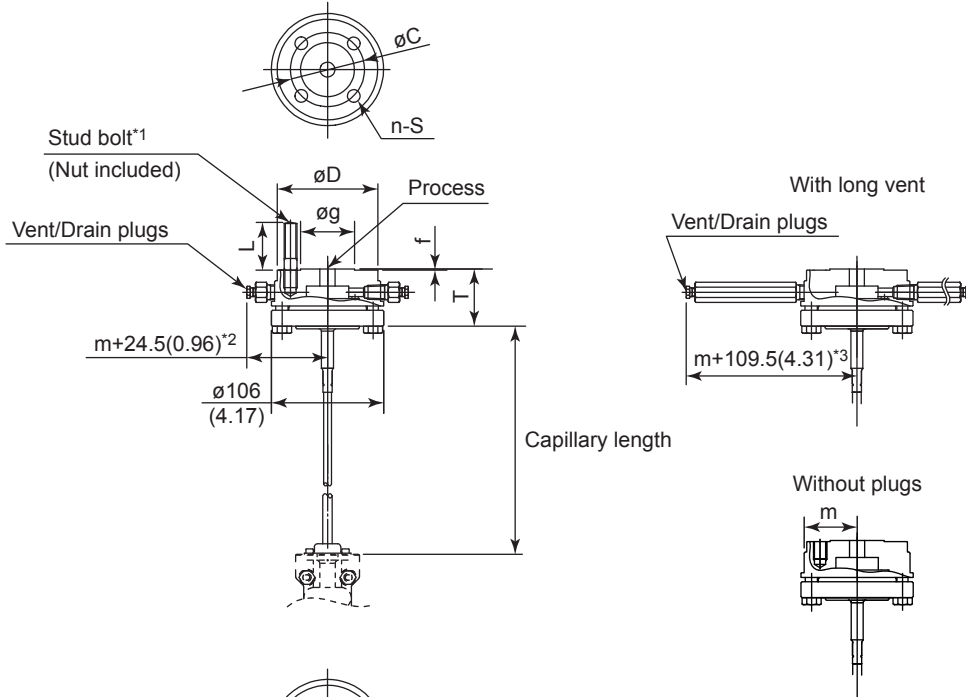
# Drawings

## C81FA, C82FA Inner Diaphragm Adapter Connection Seal Raised Face(RF)

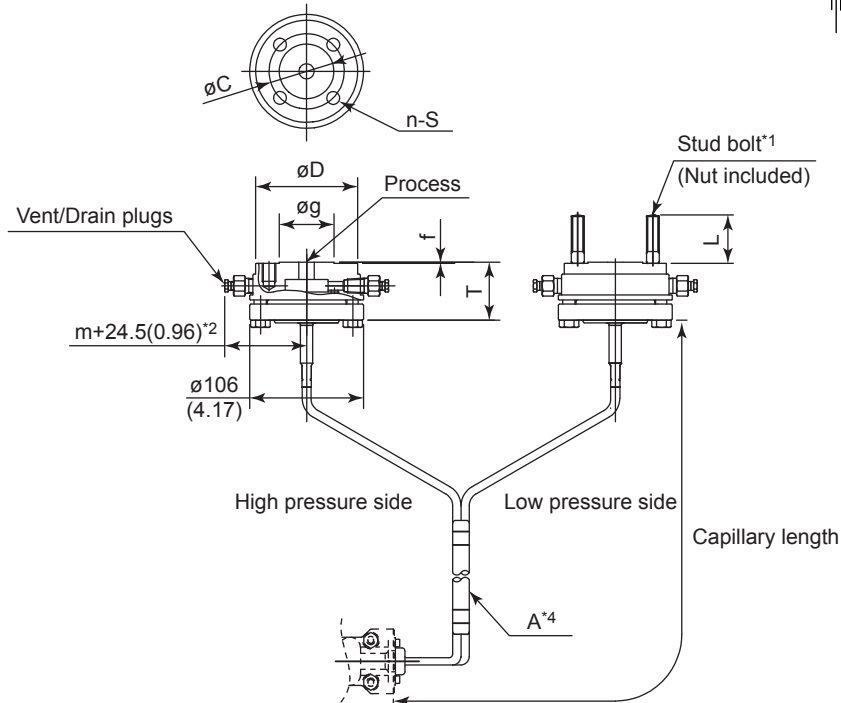
SD 01C25W53-03EN

Unit: mm (approx. inch)

• C82FA



• C81FA



\*1: Stud bolts and nuts are attached for  $n$  pcs. ( $2 \times n$  pcs for C81FA)

\*2: In the case of oil-prohibited use or oil-prohibited use with dehydrating treatment, +15 mm(0.59 inch).

\*3: In the case of oil-prohibited use or oil-prohibited use with dehydrating treatment, +11 mm(0.43 inch).

\*4: In the case of C81FA, the capillaries are bundled at "A", having 1 m(39.37 inch) left unbundled towards the remote seal part.

Unit: mm (approx. inch)

• For general use (Flange usage code -S, -P)

Process flange size: 15A (1/2B)

Flange Standard Code	Flange Rating Code	Flange Rating	øD	øC*1	øg	T*2	f	m	n	S	L (Reference)
J	A	JIS 10K	95(3.74)	70(2.76)	51(2.01)	52(2.05)	1(0.04)	50(1.97)	4	M12×1.75	43(1.69)
J	B	JIS 20K	95(3.74)	70(2.76)	51(2.01)	52(2.05)	1(0.04)	50(1.97)	4	M12×1.75	43(1.69)
J	C	JIS 30K	115(4.53)	80(3.15)	55(2.17)	52(2.05)	1(0.04)	57.5(2.26)	4	M16×2.0	57(2.24)
J	D	JIS 40K	115(4.53)	80(3.15)	55(2.17)	52(2.05)	1(0.04)	57.5(2.26)	4	M16×2.0	57(2.24)
A	1	ANSI class 150	88.9(3.50)	60.5(2.38)	35.1(1.38)	52(2.05)	1.6(0.06)	50(1.97)	4	1/2-13UNC	44(1.73)
A	2	ANSI class 300	95.3(3.75)	66.5(2.62)	35.1(1.38)	52(2.05)	1.6(0.06)	50(1.97)	4	1/2-13UNC	44(1.73)
A	4	ANSI class 600	95.3(3.75)	66.5(2.62)	35.1(1.38)	62(2.44)	6.4(0.25)	53(2.09)	4	1/2-13UNC	59(2.32)
P	1	JPI class 150	89(3.50)	60.5(2.38)	35.1(1.38)	52(2.05)	1.6(0.06)	50(1.97)	4	1/2-13UNC	44(1.73)
P	2	JPI class 300	95(3.74)	66.5(2.62)	35.1(1.38)	52(2.05)	1.6(0.06)	50(1.97)	4	1/2-13UNC	44(1.73)
P	4	JPI class 600	95(3.74)	66.5(2.62)	35.1(1.38)	62(2.44)	6.4(0.25)	53(2.09)	4	1/2-13UNC	59(2.32)

Process flange size: 20A (3/4B)

Flange Standard Code	Flange Rating Code	Flange Rating	øD	øC*1	øg	T*2	f	m	n	S	L (Reference)
J	A	JIS 10K	100(3.94)	75(2.95)	56(2.20)	52(2.05)	1(0.04)	50(1.97)	4	M12×1.75	43(1.69)
J	B	JIS 20K	100(3.94)	75(2.95)	56(2.20)	52(2.05)	1(0.04)	50(1.97)	4	M12×1.75	43(1.69)
J	C	JIS 30K	120(4.72)	85(3.35)	60(2.36)	52(2.05)	1(0.04)	60(2.36)	4	M16×2.0	57(2.24)
J	D	JIS 40K	120(4.72)	85(3.35)	60(2.36)	52(2.05)	1(0.04)	60(2.36)	4	M16×2.0	57(2.24)
A	1	ANSI class 150	98.6(3.75)	69.9(2.75)	42.9(1.69)	52(2.05)	1.6(0.06)	50(1.97)	4	1/2-13UNC	44(1.73)
A	2	ANSI class 300	117.3(4.62)	82.6(3.25)	42.9(1.69)	52(2.05)	1.6(0.06)	58.7(2.31)	4	5/8-11UNC	51(2.01)
A	4	ANSI class 600	117.3(4.62)	82.6(3.25)	42.9(1.69)	62(2.44)	6.4(0.25)	58.7(2.31)	4	5/8-11UNC	67(2.64)
P	1	JPI class 150	99(3.90)	69.8(2.75)	42.9(1.69)	52(2.05)	1.6(0.06)	50(1.97)	4	1/2-13UNC	44(1.73)
P	2	JPI class 300	117(4.61)	82.6(3.25)	42.9(1.69)	52(2.05)	1.6(0.06)	58.7(2.31)	4	5/8-11UNC	51(2.01)
P	4	JPI class 600	117(4.61)	82.6(3.25)	42.9(1.69)	62(2.44)	6.4(0.25)	58.7(2.31)	4	5/8-11UNC	67(2.64)

Process flange size: 25A (1B)

Flange Standard Code	Flange Rating Code	Flange Rating	øD	øC*1	øg	T*2	f	m	n	S	L (Reference)
J	A	JIS 10K	125(4.92)	90(3.54)	67(2.64)	52(2.05)	1(0.04)	62.5(2.46)	4	M16×2.0	57(2.24)
J	B	JIS 20K	125(4.92)	90(3.54)	67(2.64)	52(2.05)	1(0.04)	62.5(2.46)	4	M16×2.0	57(2.24)
J	C	JIS 30K	130(5.12)	95(3.74)	70(2.76)	52(2.05)	1(0.04)	65(2.56)	4	M16×2.0	57(2.24)
J	D	JIS 40K	130(5.12)	95(3.74)	70(2.76)	52(2.05)	1(0.04)	65(2.56)	4	M16×2.0	57(2.24)
A	1	ANSI class 150	108(4.25)	79.2(3.12)	50.8(2.00)	52(2.05)	1.6(0.06)	54(2.13)	4	1/2-13UNC	44(1.73)
A	2	ANSI class 300	124(4.88)	88.9(3.50)	50.8(2.00)	52(2.05)	1.6(0.06)	62(2.44)	4	5/8-11UNC	51(2.01)
A	4	ANSI class 600	124(4.88)	88.9(3.50)	50.8(2.00)	62(2.44)	6.4(0.25)	62(2.44)	4	5/8-11UNC	67(2.64)
P	1	JPI class 150	108(4.25)	79.2(3.12)	50.8(2.00)	52(2.05)	1.6(0.06)	54(2.13)	4	1/2-13UNC	44(1.73)
P	2	JPI class 300	124(4.88)	88.9(3.50)	50.8(2.00)	52(2.05)	1.6(0.06)	62(2.44)	4	5/8-11UNC	51(2.01)
P	4	JPI class 600	124(4.88)	88.9(3.50)	50.8(2.00)	62(2.44)	6.4(0.25)	62(2.44)	4	5/8-11UNC	67(2.64)

\*1: This value is the same as flange standards. Actual value might be added 1 mm(0.04 inch) because the commercial gaskets can be used.

\*2: Use the following value for size T when tantalum (code: T) is specified for diaphragm material;  
58 mm(2.28 inch) for JIS flange  
59 mm(2.32 inch) for ANSI and JPI flange.

Unit: mm (approx. inch)

• For high temperature use (Flange usage code -H)

Process flange size: 15A (1/2B)

Flange Standard Code	Flange Rating Code	Flange Rating	øD	øC*1	øg	T	f	m	n	S	L (Reference)
J	A	JIS 10K	120(4.72)	70(2.76)	51(2.01)	54.5(2.15)	1(0.04)	60(2.36)	4	M12×1.75	43(1.69)
J	B	JIS 20K	120(4.72)	70(2.76)	51(2.01)	54.5(2.15)	1(0.04)	60(2.36)	4	M12×1.75	43(1.69)
J	C	JIS 30K	120(4.72)	80(3.15)	55(2.17)	54.5(2.15)	1(0.04)	60(2.36)	4	M16×2.0	57(2.24)
J	D	JIS 40K	120(4.72)	80(3.15)	55(2.17)	54.5(2.15)	1(0.04)	60(2.36)	4	M16×2.0	57(2.24)
A	1	ANSI class 150	120(4.72)	60.5(2.38)	35.1(1.38)	54.5(2.15)	1.6(0.06)	60(2.36)	4	1/2-13UNC	44(1.73)
A	2	ANSI class 300	120(4.72)	66.5(2.62)	35.1(1.38)	54.5(2.15)	1.6(0.06)	60(2.36)	4	1/2-13UNC	44(1.73)
A	4	ANSI class 600	120(4.72)	66.5(2.62)	35.1(1.38)	65.1(2.56)	6.4(0.25)	60(2.36)	4	1/2-13UNC	59(2.32)
P	1	JPI class 150	120(4.72)	60.5(2.38)	35.1(1.38)	54.5(2.15)	1.6(0.06)	60(2.36)	4	1/2-13UNC	44(1.73)
P	2	JPI class 300	120(4.72)	66.5(2.62)	35.1(1.38)	54.5(2.15)	1.6(0.06)	60(2.36)	4	1/2-13UNC	44(1.73)
P	4	JPI class 600	120(4.72)	66.5(2.62)	35.1(1.38)	65.1(2.56)	6.4(0.25)	60(2.36)	4	1/2-13UNC	59(2.32)

Process flange size: 20A (3/4B)

Flange Standard Code	Flange Rating Code	Flange Rating	øD	øC*1	øg	T	f	m	n	S	L (Reference)
J	A	JIS 10K	120(4.72)	75(2.95)	56(2.20)	54.5(2.15)	1(0.04)	60(2.36)	4	M12×1.75	43(1.69)
J	B	JIS 20K	120(4.72)	75(2.95)	56(2.20)	54.5(2.15)	1(0.04)	60(2.36)	4	M12×1.75	43(1.69)
J	C	JIS 30K	120(4.72)	85(3.35)	60(2.36)	54.5(2.15)	1(0.04)	60(2.36)	4	M16×2.0	57(2.24)
J	D	JIS 40K	120(4.72)	85(3.35)	60(2.36)	54.5(2.15)	1(0.04)	60(2.36)	4	M16×2.0	57(2.24)
A	1	ANSI class 150	120(4.72)	69.9(2.75)	42.9(1.69)	54.5(2.15)	1.6(0.06)	60(2.36)	4	1/2-13UNC	44(1.73)
A	2	ANSI class 300	120(4.72)	82.6(3.25)	42.9(1.69)	54.5(2.15)	1.6(0.06)	60(2.36)	4	5/8-11UNC	51(2.01)
A	4	ANSI class 600	120(4.72)	82.6(3.25)	42.9(1.69)	65.1(2.56)	6.4(0.25)	60(2.36)	4	5/8-11UNC	67(2.64)
P	1	JPI class 150	120(4.72)	69.8(2.75)	42.9(1.69)	54.5(2.15)	1.6(0.06)	60(2.36)	4	1/2-13UNC	44(1.73)
P	2	JPI class 300	120(4.72)	82.6(3.25)	42.9(1.69)	54.5(2.15)	1.6(0.06)	60(2.36)	4	5/8-11UNC	51(2.01)
P	4	JPI class 600	120(4.72)	82.6(3.25)	42.9(1.69)	65.1(2.56)	6.4(0.25)	60(2.36)	4	5/8-11UNC	67(2.64)

Process flange size: 25A (1B)

Flange Standard Code	Flange Rating Code	Flange Rating	øD	øC*1	øg	T	f	m	n	S	L (Reference)
J	A	JIS 10K	125(4.92)	90(3.54)	67(2.64)	54.5(2.15)	1(0.04)	62.5(2.46)	4	M16×2.0	57(2.24)
J	B	JIS 20K	125(4.92)	90(3.54)	67(2.64)	54.5(2.15)	1(0.04)	62.5(2.46)	4	M16×2.0	57(2.24)
J	C	JIS 30K	130(5.12)	95(3.74)	70(2.76)	54.5(2.15)	1(0.04)	65(2.56)	4	M16×2.0	57(2.24)
J	D	JIS 40K	130(5.12)	95(3.74)	70(2.76)	54.5(2.15)	1(0.04)	65(2.56)	4	M16×2.0	57(2.24)
A	1	ANSI class 150	120(4.72)	79.2(3.12)	50.8(2.00)	54.5(2.15)	1.6(0.06)	60(2.36)	4	1/2-13UNC	44(1.73)
A	2	ANSI class 300	124(4.88)	88.9(3.50)	50.8(2.00)	54.5(2.15)	1.6(0.06)	62(2.44)	4	5/8-11UNC	51(2.01)
A	4	ANSI class 600	124(4.88)	88.9(3.50)	50.8(2.00)	65.1(2.56)	6.4(0.25)	62(2.44)	4	5/8-11UNC	67(2.64)
P	1	JPI class 150	120(4.72)	79.2(3.12)	50.8(2.00)	54.5(2.15)	1.6(0.06)	60(2.36)	4	1/2-13UNC	44(1.73)
P	2	JPI class 300	124(4.88)	88.9(3.50)	50.8(2.00)	54.5(2.15)	1.6(0.06)	62(2.44)	4	5/8-11UNC	51(2.01)
P	4	JPI class 600	124(4.88)	88.9(3.50)	50.8(2.00)	65.1(2.56)	6.4(0.25)	62(2.44)	4	5/8-11UNC	67(2.64)

\*1: This value is the same as flange standards. Actual value might be added 1 mm(0.04 inch) because the commercial gaskets can be used.