

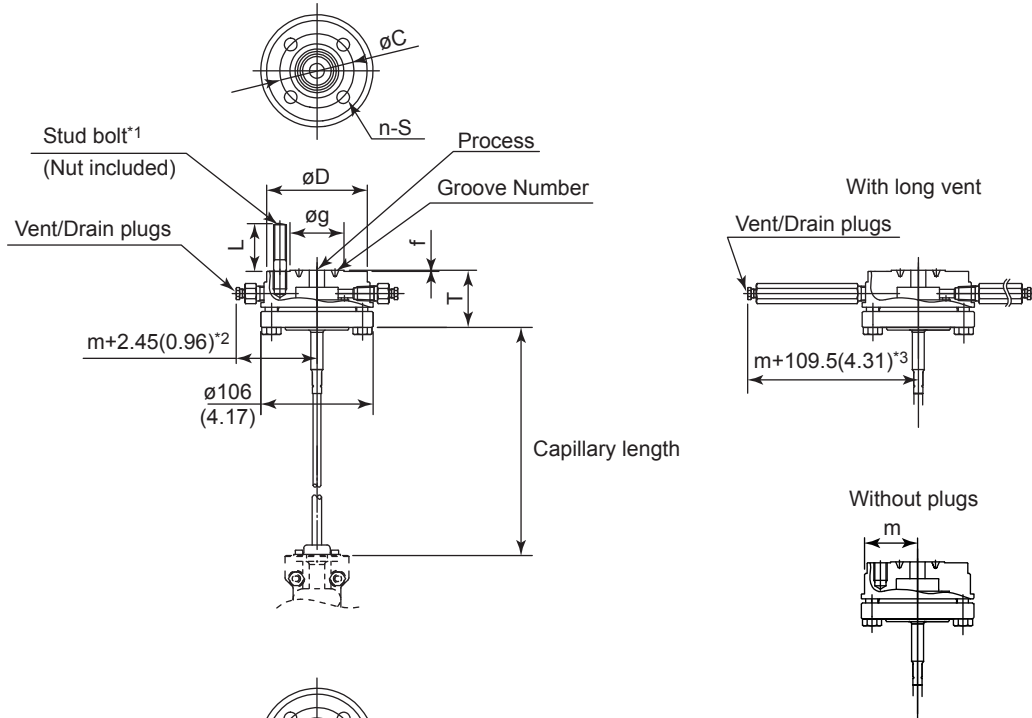
# Drawings

## C81FA, C82FA Inner Diaphragm Adapter Connection Seal Ring Joint(RJ)

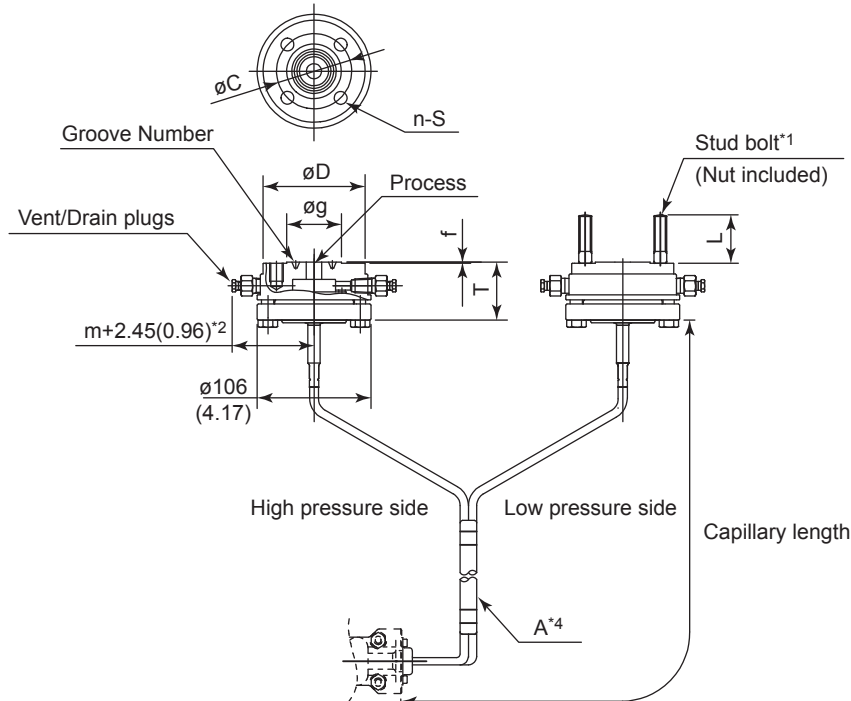
SD 01C25W53-04EN

Unit: mm (approx. inch)

• C82FA



• C81FA



\*1: Stud bolts and nuts are attached for n pcs. (2×n pcs for C81FA)

\*2: In the case of oil-prohibited use or oil-prohibited use with dehydrating treatment, +15 mm(0.59 inch).

\*3: In the case of oil-prohibited use or oil-prohibited use with dehydrating treatment, +11 mm(0.43 inch).

\*4: In the case of C81FA, the capillaries are bundled at "A", having 1 m(39.37 inch) left unbundled towards the remote seal part.

Unit: mm (approx. inch)

• For general use (Flange usage code -S, -P)

Process flange size: 15A (1/2B)

Flange Standard Code	Flange Rating Code	Flange Rating	øD	øC	øg	T*1	f	m	n	S	L (Reference)	Groove number
A	2	ANSI class 300	95.3(3.75)	66.5(2.62)	50.8(2.00)	56.4(2.22)	5.56(0.22)	50(1.97)	4	1/2-13UNC	44(1.73)	R11
A	4	ANSI class 600	95.3(3.75)	66.5(2.62)	50.8(2.00)	61.5(2.42)	5.56(0.22)	53(2.09)	4	1/2-13UNC	59(2.32)	R11
P	2	JPI class 300	95(3.74)	66.5(2.62)	51(2.01)	56.4(2.22)	5.56(0.22)	50(1.97)	4	1/2-13UNC	44(1.73)	R11
P	4	JPI class 600	95(3.74)	66.5(2.62)	51(2.01)	61.5(2.42)	5.56(0.22)	53(2.09)	4	1/2-13UNC	59(2.32)	R11

Process flange size: 20A (3/4B)

Flange Standard Code	Flange Rating Code	Flange Rating	øD	øC	øg	T*2	f	m	n	S	L (Reference)	Groove number
A	2	ANSI class 300	117.3(4.62)	82.6(3.25)	63.5(2.50)	56.9(2.24)	6.35(0.25)	58.7(2.31)	4	5/8-11UNC	51(2.01)	R13
A	4	ANSI class 600	117.3(4.62)	82.6(3.25)	63.5(2.50)	62(2.44)	6.35(0.25)	58.7(2.31)	4	5/8-11UNC	67(2.64)	R13
P	2	JPI class 300	117(4.61)	82.6(3.25)	63.5(2.50)	56.9(2.24)	6.35(0.25)	58.5(2.30)	4	5/8-11UNC	51(2.01)	R13
P	4	JPI class 600	117(4.61)	82.6(3.25)	63.5(2.50)	62(2.44)	6.35(0.25)	58.5(2.30)	4	5/8-11UNC	67(2.64)	R13

Process flange size: 25A (1B)

Flange Standard Code	Flange Rating Code	Flange Rating	øD	øC	øg	T*2	f	m	n	S	L (Reference)	Groove number
A	2	ANSI class 300	124(4.88)	88.9(3.50)	69.9(2.75)	56.9(2.24)	6.35(0.25)	62(2.44)	4	5/8-11UNC	51(2.01)	R16
A	4	ANSI class 600	124(4.88)	88.9(3.50)	69.9(2.75)	62(2.44)	6.35(0.25)	62(2.44)	4	5/8-11UNC	67(2.64)	R16
P	2	JPI class 300	124(4.88)	88.9(3.50)	70(2.76)	56.9(2.24)	6.35(0.25)	62(2.44)	4	5/8-11UNC	51(2.01)	R16
P	4	JPI class 600	124(4.88)	88.9(3.50)	70(2.76)	62(2.44)	6.35(0.25)	62(2.44)	4	5/8-11UNC	67(2.64)	R16

\*1: Size T is 63mm(2.48 inch) when tantalum (code: T) is specified for diaphragm material.

\*2: Size T is 64 mm(2.52 inch) when tantalum (code: T) is specified for diaphragm material.

• For high temperature use (Flange usage code -H)

Process flange size: 15A (1/2B)

Flange Standard Code	Flange Rating Code	Flange Rating	øD	øC	øg	T	f	m	n	S	L (Reference)	Groove number
A	2	ANSI class 300	120(4.72)	66.5(2.62)	50.8(2.00)	60(2.36)	5.56(0.22)	60(2.36)	4	1/2-13UNC	44(1.73)	R11
A	4	ANSI class 600	120(4.72)	66.5(2.62)	50.8(2.00)	65.1(2.56)	5.56(0.22)	60(2.36)	4	1/2-13UNC	59(2.32)	R11
P	2	JPI class 300	120(4.72)	66.5(2.62)	51(2.01)	60(2.36)	5.56(0.22)	60(2.36)	4	1/2-13UNC	44(1.73)	R11
P	4	JPI class 600	120(4.72)	66.5(2.62)	51(2.01)	65.1(2.56)	5.56(0.22)	60(2.36)	4	1/2-13UNC	59(2.32)	R11

Process flange size: 20A (3/4B)

Flange Standard Code	Flange Rating Code	Flange Rating	øD	øC	øg	T	f	m	n	S	L (Reference)	Groove number
A	2	ANSI class 300	120(4.72)	82.6(3.25)	63.5(2.50)	60(2.36)	6.35(0.25)	60(2.36)	4	5/8-11UNC	51(2.01)	R13
A	4	ANSI class 600	120(4.72)	82.6(3.25)	63.5(2.50)	65.1(2.56)	6.35(0.25)	60(2.36)	4	5/8-11UNC	67(2.64)	R13
P	2	JPI class 300	120(4.72)	82.6(3.25)	63.5(2.50)	60(2.36)	6.35(0.25)	60(2.36)	4	5/8-11UNC	51(2.01)	R13
P	4	JPI class 600	120(4.72)	82.6(3.25)	63.5(2.50)	65.1(2.56)	6.35(0.25)	60(2.36)	4	5/8-11UNC	67(2.64)	R13

Process flange size: 25A (1B)

Flange Standard Code	Flange Rating Code	Flange Rating	øD	øC	øg	T	f	m	n	S	L (Reference)	Groove number
A	2	ANSI class 300	124(4.88)	88.9(3.50)	69.9(2.75)	60(2.36)	6.35(0.25)	62(2.44)	4	5/8-11UNC	51(2.01)	R16
A	4	ANSI class 600	124(4.88)	88.9(3.50)	69.9(2.75)	65.1(2.56)	6.35(0.25)	62(2.44)	4	5/8-11UNC	67(2.64)	R16
P	2	JPI class 300	124(4.88)	88.9(3.50)	70(2.76)	60(2.36)	6.35(0.25)	62(2.44)	4	5/8-11UNC	51(2.01)	R16
P	4	JPI class 600	124(4.88)	88.9(3.50)	70(2.76)	65.1(2.56)	6.35(0.25)	62(2.44)	4	5/8-11UNC	67(2.64)	R16