

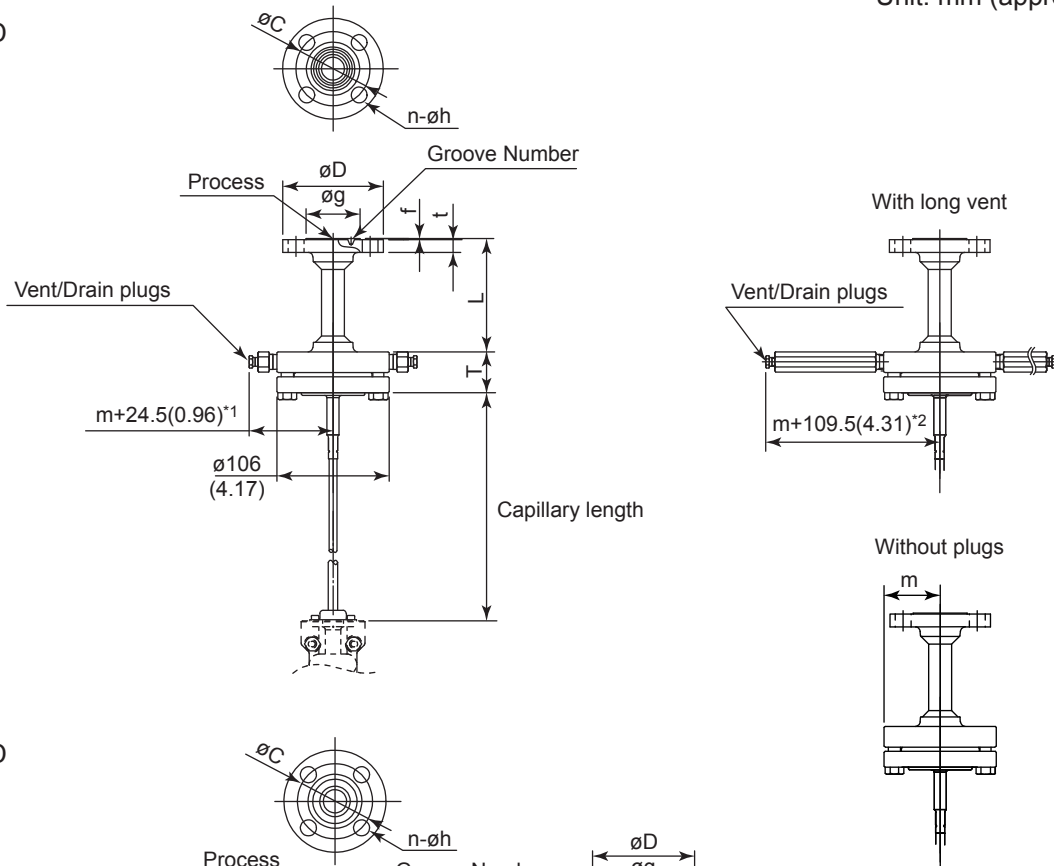
Drawings

C81FD, C82FD Inner Diaphragm Flanged Seal Ring Joint(RJ)

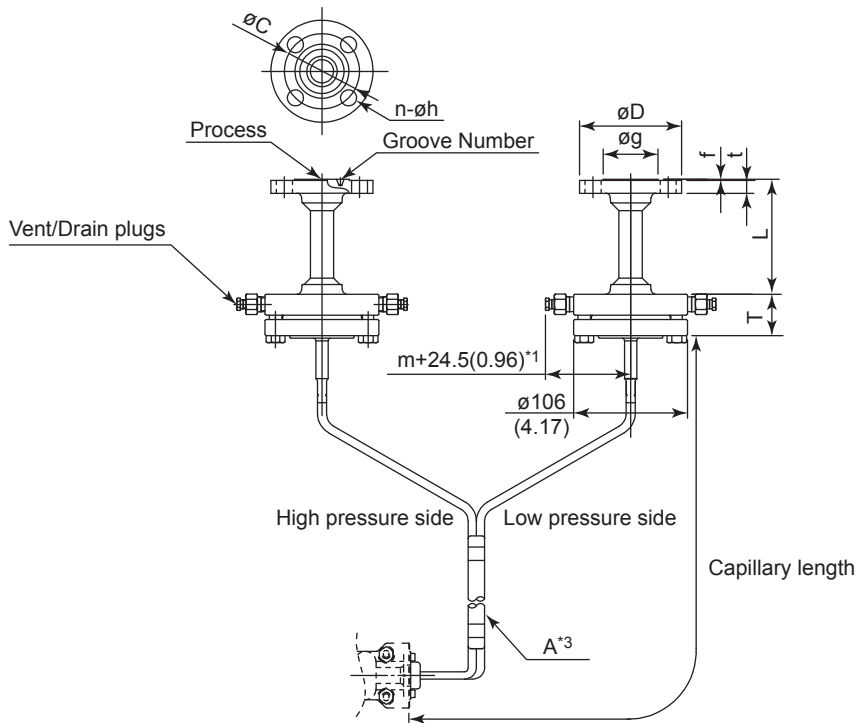
SD 01C25W54-04EN

Unit: mm (approx. inch)

• C82FD



• C81FD



*1: In the case of oil-prohibited use or oil-prohibited use with dehydrating treatment, +15 mm(0.59 inch).

*2: In the case of oil-prohibited use or oil-prohibited use with dehydrating treatment, +11 mm(0.43 inch).

*3: In the case of C81FD, the capillaries are bundled at "A", having 1 m(39.37 inch) left unbundled towards the remote seal part.

Unit: mm (approx. inch)

• For general use (Flange usage code -S, -P)

Process flange size: 15A (1/2B)

Flange Standard Code	Flange Rating Code	Flange Rating	øD	øC	øg	L	T*1	t	f	m	n	øh	Groove number
A	2	ANSI class 300	95.3(3.75)	66.5(2.62)	50.8(2.00)	124(4.88)	42(1.65)	14.3(0.56)	5.56(0.22)	53(2.09)	4	16(0.63)	R11
A	4	ANSI class 600	95.3(3.75)	66.5(2.62)	50.8(2.00)	124(4.88)	57(2.24)	14.3(0.56)	5.56(0.22)	53(2.09)	4	16(0.63)	R11
P	2	JPI class 300	95(3.74)	66.5(2.62)	51(2.01)	124(4.88)	42(1.65)	14.3(0.56)	5.56(0.22)	53(2.09)	4	16(0.63)	R11
P	4	JPI class 600	95(3.74)	66.5(2.62)	51(2.01)	124(4.88)	57(2.24)	14.3(0.56)	5.56(0.22)	53(2.09)	4	16(0.63)	R11

Process flange size: 20A (3/4B)

Flange Standard Code	Flange Rating Code	Flange Rating	øD	øC	øg	L	T*1	t	f	m	n	øh	Groove number
A	2	ANSI class 300	117.3(4.62)	82.6(3.25)	63.5(2.50)	128(5.04)	42(1.65)	15.8(0.62)	6.35(0.25)	53(2.09)	4	19(0.75)	R13
A	4	ANSI class 600	117.3(4.62)	82.6(3.25)	63.5(2.50)	128(5.04)	57(2.24)	15.8(0.62)	6.35(0.25)	53(2.09)	4	19(0.75)	R13
P	2	JPI class 300	117(4.61)	82.6(3.25)	63.5(2.50)	127(5.00)	42(1.65)	15.8(0.62)	6.35(0.25)	53(2.09)	4	19(0.75)	R13
P	4	JPI class 600	117(4.61)	82.6(3.25)	63.5(2.50)	127(5.00)	57(2.24)	15.8(0.62)	6.35(0.25)	53(2.09)	4	19(0.75)	R13

Process flange size: 25A (1B)

Flange Standard Code	Flange Rating Code	Flange Rating	øD	øC	øg	L	T*1	t	f	m	n	øh	Groove number
A	2	ANSI class 300	124(4.88)	88.9(3.50)	69.9(2.75)	129(5.08)	42(1.65)	17.6(0.69)	6.35(0.25)	53(2.09)	4	19(0.75)	R16
A	4	ANSI class 600	124(4.88)	88.9(3.50)	69.9(2.75)	129(5.08)	57(2.24)	17.6(0.69)	6.35(0.25)	53(2.09)	4	19(0.75)	R16
P	2	JPI class 300	124(4.88)	88.9(3.50)	70(2.76)	129(5.08)	42(1.65)	17.6(0.69)	6.35(0.25)	53(2.09)	4	19(0.75)	R16
P	4	JPI class 600	124(4.88)	88.9(3.50)	70(2.76)	129(5.08)	57(2.24)	17.6(0.69)	6.35(0.25)	53(2.09)	4	19(0.75)	R16

*1: Size T is 47 mm(1.85 inch) when tantalum (code: T) is specified for diaphragm material.

• For high temperature use (Flange usage code -H)

Process flange size: 15A (1/2B)

Flange Standard Code	Flange Rating Code	Flange Rating	øD	øC	øg	L	T	t	f	m	n	øh	Groove number
A	2	ANSI class 300	95.3(3.75)	66.5(2.62)	50.8(2.00)	124(4.88)	51(2.01)	14.3(0.56)	5.56(0.22)	60(2.36)	4	16(0.63)	R11
A	4	ANSI class 600	95.3(3.75)	66.5(2.62)	50.8(2.00)	124(4.88)	57(2.24)	14.3(0.56)	5.56(0.22)	60(2.36)	4	16(0.63)	R11
P	2	JPI class 300	95(3.74)	66.5(2.62)	51(2.01)	124(4.88)	51(2.01)	14.3(0.56)	5.56(0.22)	60(2.36)	4	16(0.63)	R11
P	4	JPI class 600	95(3.74)	66.5(2.62)	51(2.01)	124(4.88)	57(2.24)	14.3(0.56)	5.56(0.22)	60(2.36)	4	16(0.63)	R11

Process flange size: 20A (3/4B)

Flange Standard Code	Flange Rating Code	Flange Rating	øD	øC	øg	L	T	t	f	m	n	øh	Groove number
A	2	ANSI class 300	117.3(4.62)	82.6(3.25)	63.5(2.50)	128(5.04)	51(2.01)	15.8(0.62)	6.35(0.25)	60(2.36)	4	19(0.75)	R13
A	4	ANSI class 600	117.3(4.62)	82.6(3.25)	63.5(2.50)	128(5.04)	57(2.24)	15.8(0.62)	6.35(0.25)	60(2.36)	4	19(0.75)	R13
P	2	JPI class 300	117(4.61)	82.6(3.25)	63.5(2.50)	127(5.00)	51(2.01)	15.8(0.62)	6.35(0.25)	60(2.36)	4	19(0.75)	R13
P	4	JPI class 600	117(4.61)	82.6(3.25)	63.5(2.50)	127(5.00)	57(2.24)	15.8(0.62)	6.35(0.25)	60(2.36)	4	19(0.75)	R13

Process flange size: 25A (1B)

Flange Standard Code	Flange Rating Code	Flange Rating	øD	øC	øg	L	T	t	f	m	n	øh	Groove number
A	2	ANSI class 300	124(4.88)	88.9(3.50)	69.9(2.75)	129(5.08)	51(2.01)	17.6(0.69)	6.35(0.25)	60(2.36)	4	19(0.75)	R16
A	4	ANSI class 600	124(4.88)	88.9(3.50)	69.9(2.75)	129(5.08)	57(2.24)	17.6(0.69)	6.35(0.25)	60(2.36)	4	19(0.75)	R16
P	2	JPI class 300	124(4.88)	88.9(3.50)	70(2.76)	129(5.08)	51(2.01)	17.6(0.69)	6.35(0.25)	60(2.36)	4	19(0.75)	R16
P	4	JPI class 600	124(4.88)	88.9(3.50)	70(2.76)	129(5.08)	57(2.24)	17.6(0.69)	6.35(0.25)	60(2.36)	4	19(0.75)	R16