

Drawings

C20FW
Direct Mount Flanged Diaphragm Seal
(Flush type)

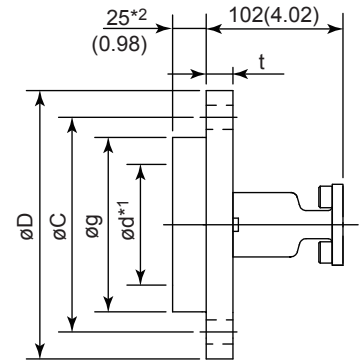
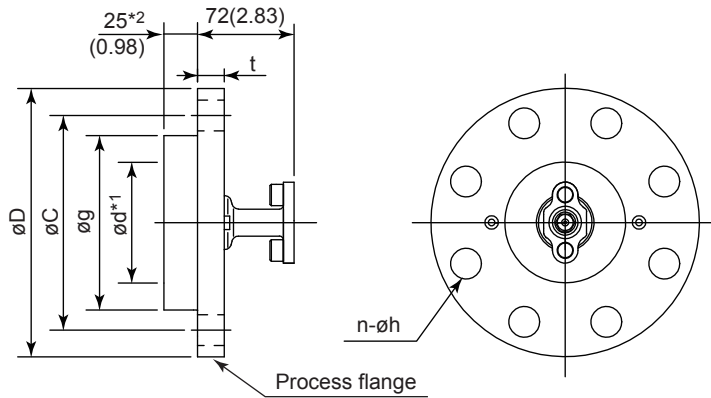
DP *harp* **EJX**[®]
DP *harp* **EJA**[®]

SD 01C25W61-01EN

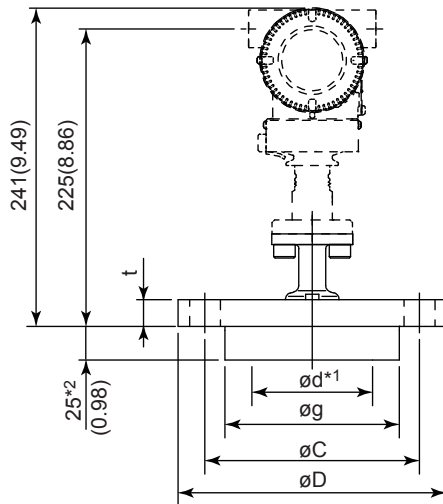
Unit: mm (approx. inch)

- For general use (Stay style code: S)

- For high temperature use (Stay style code: L)

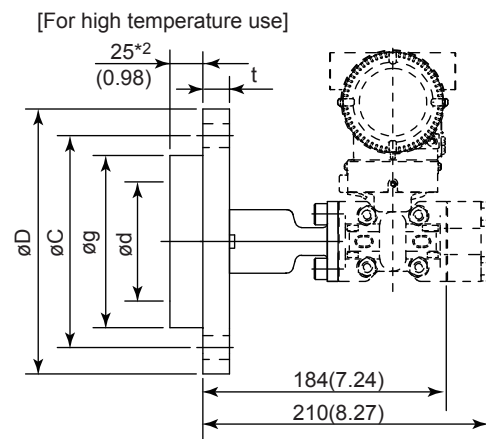
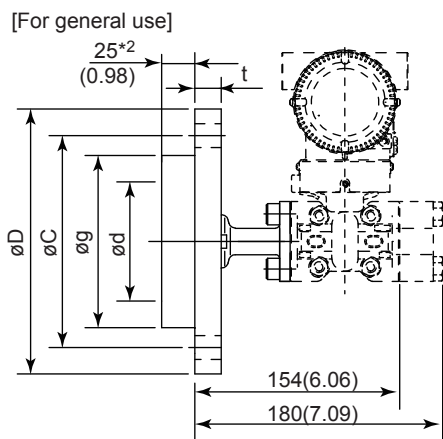


- For EJXC50A, EJAC50E, and EJXC40A



*1: Indicates inside diameter of gasket surface.
*2: 33 mm(1.3 inch) for Diaphragm material code and Sealing face material code U.

- For EJXC80A or EJAC80E



Unit: mm (approx. inch)

Process flange size: 80A(3B)

Flange standards code	Flange rating code	Flange rating	øD	øC	øg	ød	t	Bolt holes	
								No.(n)	Dia.(øh)
J	A	JIS 10K	185(7.28)	150(5.91)	130(5.12)	90(3.54)	18(0.71)	8	19(0.75)
J	B	JIS 20K	200(7.87)	160(6.30)	130(5.12)	90(3.54)	22(0.87)	8	23(0.91)
J	D	JIS 40K	210 (8.27)	170(6.69)	130(5.12)	90(3.54)	32(1.26)	8	23(0.91)
A	1	ANSI class 150	190.5(7.50)	152.4(6.00)	130(5.12)	90(3.54)	23.9(0.94)	4	19.1(0.75)
A	2	ANSI class 300	209.6(8.25)	168.1(6.62)	130(5.12)	90(3.54)	28.5(1.12)	8	22.4(0.88)
A	4	ANSI class 600	209.6(8.25)	168.1(6.62)	130(5.12)	90(3.54)	31.8(1.25)	8	22.4(0.88)
P	1	JPI class 150	190(7.48)	152.4(6.00)	130(5.12)	90(3.54)	24(0.94)	4	19(0.75)
P	2	JPI class 300	210(8.27)	168.1(6.62)	130(5.12)	90(3.54)	28.5(1.12)	8	22(0.87)
P	4	JPI class 600	210(8.27)	168.1(6.62)	130(5.12)	90(3.54)	32.0(1.26)	8	22(0.87)
D	H	DIN PN 10/16	200(7.87)	160(6.30)	130(5.12)	90(3.54)	20(0.79)	8	18(0.71)
D	K	DIN PN 25/40	200(7.87)	160(6.30)	130(5.12)	90(3.54)	24(0.94)	8	18(0.71)

Process flange size: 50A(2B)

Flange standards code	Flange rating code	Flange rating	øD	øC	øg	ød	t	Bolt holes	
								No.(n)	Dia.(øh)
J	A	JIS 10K	155(6.10)	120(4.72)	100(3.94)	61(2.40)	16(0.63)	4	19(0.75)
J	B	JIS 20K	155(6.10)	120(4.72)	100(3.94)	61(2.40)	18(0.71)	8	19(0.75)
J	D	JIS 40K	165(6.50)	130(5.12)	100(3.94)	61(2.40)	26(1.02)	8	19(0.75)
A	1	ANSI class 150	152.4(6.00)	120.7(4.75)	100(3.94)	61(2.40)	19.1(0.75)	4	19.1(0.75)
A	2	ANSI class 300	165.1(6.50)	127.0(5.00)	100(3.94)	61(2.40)	22.4(0.88)	8	19.1(0.75)
A	4	ANSI class 600	165.1(6.50)	127.0(5.00)	100(3.94)	61(2.40)	25.4(1.00)	8	19.1(0.75)
P	1	JPI class 150	152(5.98)	120.6(4.75)	100(3.94)	61(2.40)	19.5(0.77)	4	19(0.75)
P	2	JPI class 300	165(6.50)	127.0(5.00)	100(3.94)	61(2.40)	22.5(0.89)	8	19(0.75)
P	4	JPI class 600	165(6.50)	127.0(5.00)	100(3.94)	61(2.40)	25.4(1.00)	8	19(0.75)
D	H	DIN PN 10/16	165(6.50)	125(4.92)	100(3.94)	61(2.40)	18(0.71)	4	18(0.71)
D	K	DIN PN 25/40	165(6.50)	125(4.92)	100(3.94)	61(2.40)	20(0.79)	4	18(0.71)

Process flange size : 40A(1.5B)

Flange standards code	Flange rating code	Flange rating	øD	øC	øg	ød	t	Bolt holes	
								No.(n)	Dia.(øh)
J	A	JIS 10K	140(5.51)	105(4.13)	86(3.39)	*1	16(0.63)	4	19(0.75)
J	B	JIS 20K	140(5.51)	105(4.13)	86(3.39)	*1	18(0.71)	4	19(0.75)
J	D	JIS 40K	160(6.30)	120(4.72)	86(3.39)	*1	24(0.94)	4	23(0.91)
A	1	ANSI class 150	127(5.00)	98.4(3.87)	86(3.39)	*1	17.5(0.69)	4	15.9(0.63)
A	2	ANSI class 300	155.4(6.12)	114.3(4.50)	86(3.39)	*1	20.6(0.81)	4	22.4(0.88)
A	4	ANSI class 600	155.4(6.12)	114.3(4.50)	86(3.39)	*1	22.4(0.88)	4	22.4(0.88)
P	1	JPI class 150	127(5.00)	98.6(3.88)	86(3.39)	*1	17.6(0.69)	4	16(0.63)
P	2	JPI class 300	155(6.10)	114.3(4.50)	86(3.39)	*1	20.6(0.81)	4	22(0.87)
P	4	JPI class 600	155(6.10)	114.3(4.50)	86(3.39)	*1	22.5(0.89)	4	22(0.87)

*1: Always use in combination with C10FR. (ød=44 mm)