

Drawings

EJA130E

Differential Pressure Transmitter

Bolts and Nuts Material Code: J,G,C

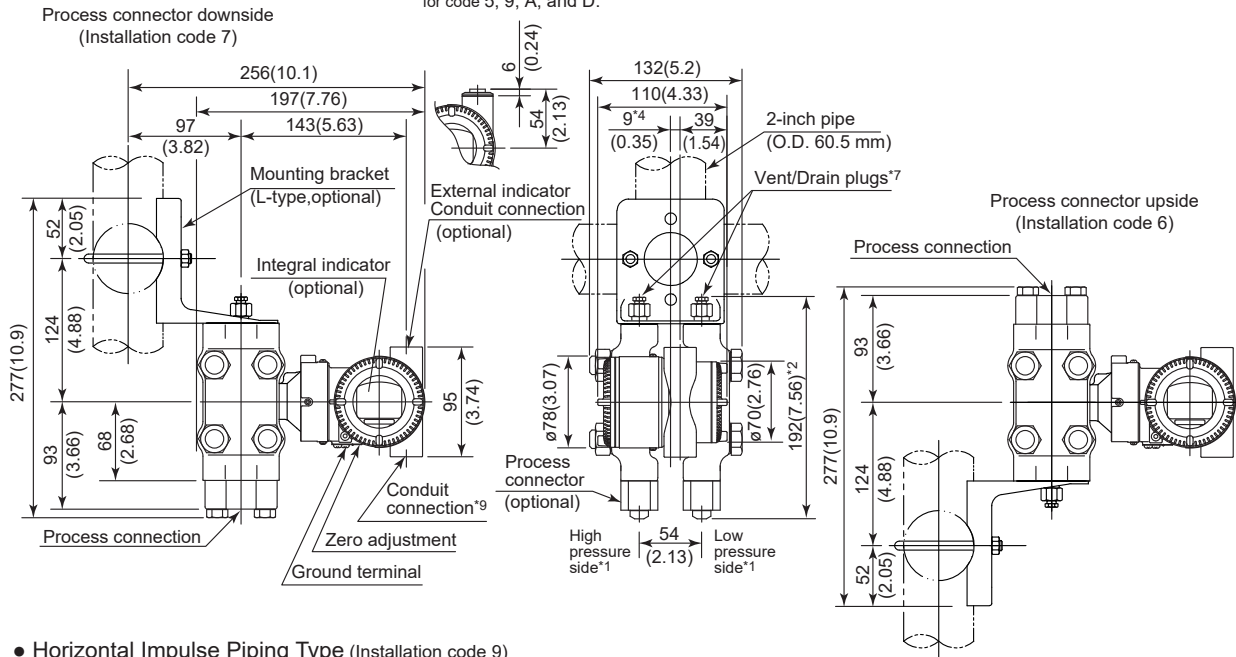
DPharp **EJA**™

SD 01C31B04-01EN

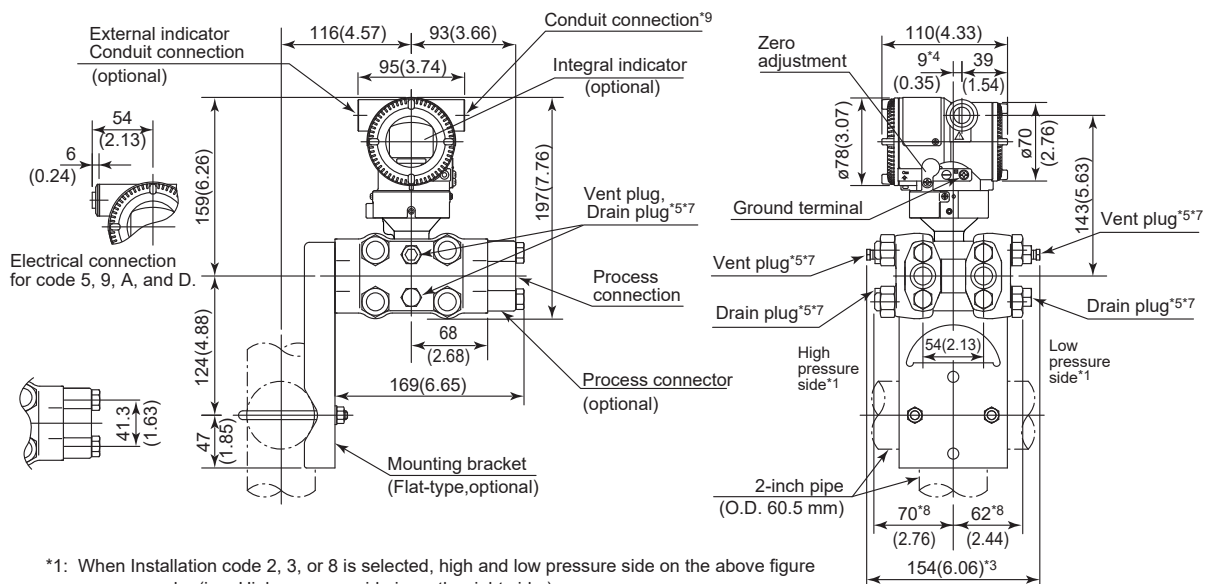
[Style: S1, S2]

Unit: mm (approx. inch)

• Vertical Impulse Piping Type



• Horizontal Impulse Piping Type (Installation code 9)



*1: When Installation code 2, 3, or 8 is selected, high and low pressure side on the above figure are reversed. (i.e. High pressure side is on the right side.)

*2: When Option code K1, K2, K5, K6, K41, K42, K45, or K46 is selected, add 15 mm(0.59 inch) to the value in the figure.

*3: When Option code K1, K2, K5, K6, K41, K42, K45, or K46 is selected, add 30 mm(1.18 inch) to the value in the figure.

*4: 15 mm(0.59 inch) for right side high pressure.

*5: Not available when Option code GS is specified.

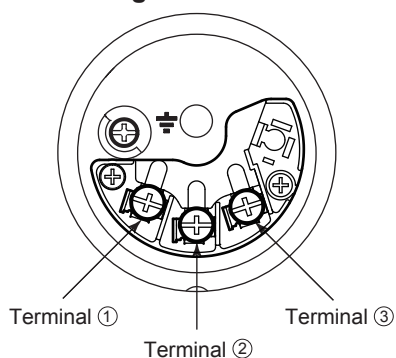
*6: When electrical connection code 7 or C is selected, a blind plug is protruded up to 8 mm(0.31 inch) from the conduit connection.

*7: When option code UN is specified, Vent/Drain holes and plugs are not applicable.

*8: Those two values are swapped for right side high pressure.

*9: When option code PP is selected, a blind plug is attached to the conduit connection on both sides.

- **Terminal Configuration**



- **Terminal Wiring for 4 to 20 mA output, FOUNDATION Fieldbus and PROFIBUS PA communication types**

SUPPLY	+	①	Power supply and output terminals
	-	②	
CHECK	+	③	External indicator (ammeter) terminals*1*2
	-	②	
		⏏	Ground terminal

*1: When using an external indicator or check meter, the internal resistance must be 10 Ω or less.

*2: Not available for FOUNDATION Fieldbus and PROFIBUS PA communication types.

- **Terminal Wiring for 1 to 5 V output**

SUPPLY	+	①	Power supply terminals
	-	②	
VOUT	+	③	1 to 5 V DC with HART communication terminals
	-	②	
		⏏	Ground terminal

Three or four wire connection. For four wire connection, both supply and signal lines use SUPPLY - terminal.