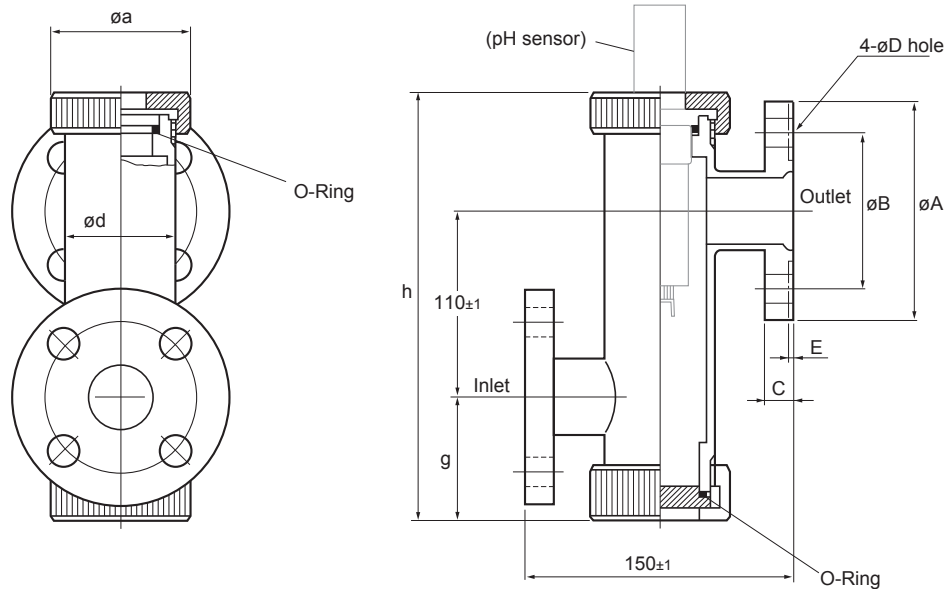


Drawings

PH8HF - PP - □1□ - T - NN - NN
 PH8HF - S3 - □1□ - T - NN - NN
 Flow - Through Type Holder [Style: S2]

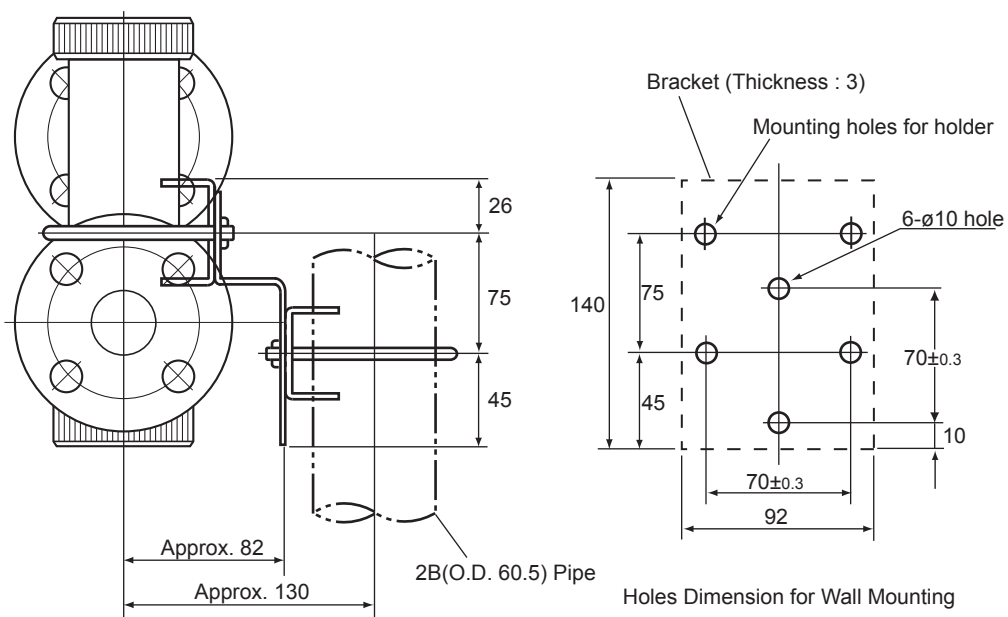
EXAPH

Unit: mm



Model and Code	A	B	C	D	E	a	d	g	h	Weight
PH8HF-PP-J10-T-NN-NN	125	90	14	19	-	80	Approx. 60	Approx. 70	Approx. 250	Approx. 0.6kg
PH8HF-PP-A15-T-NN-NN	108	79.4	14.2	15.7	-	80	Approx. 60	Approx. 70	Approx. 250	Approx. 0.6kg
PH8HF-S3-J10-T-NN-NN	125	90	14	19	-	70	Approx. 60	Approx. 70	Approx. 243	Approx. 5kg
PH8HF-S3-A15-T-NN-NN	108	79.2	14.2	15.7	2	70	Approx. 60	Approx. 70	Approx. 243	Approx. 5kg

□ Mounting Hardware (Option Code : /MF1) Weight : Approx. 0.5kg



Unless otherwise specified, differences in the dimensions are specified as: General tolerance = \pm (Criteria of tolerance class IT18 in JIS B0401-1998)/2.