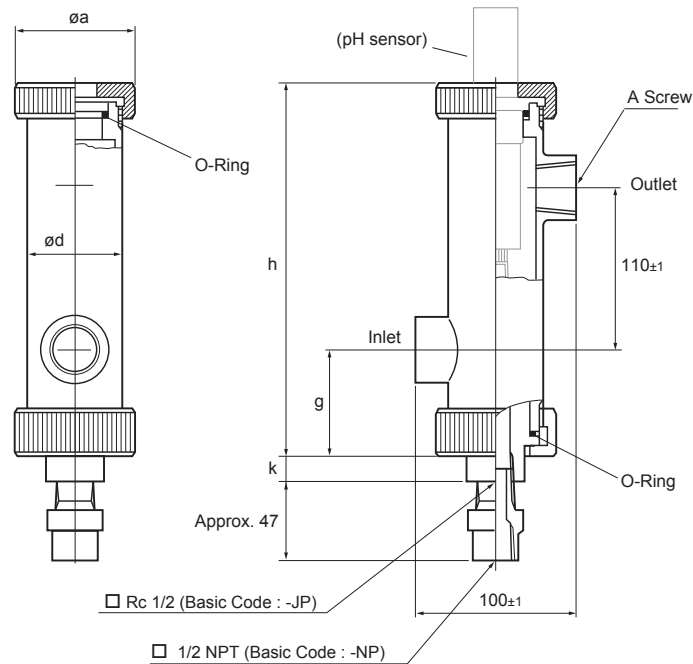


# Drawings

## PH8HF - □□ - □PT - T - □□ - □□ Flow - Through Type Holder (with Jet or Brush Cleaner) [Style: S2]

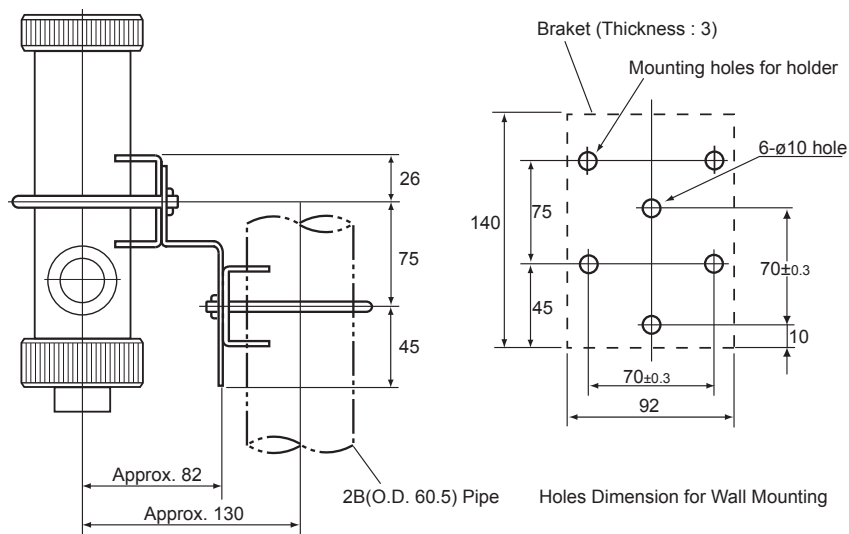
EXA PH

Unit: mm



Model and Code	A Screw	a	d	g	h	k	Weight
PH8HF-PP-JPT-T-□□-JP	Rc1	80	Approx. 60	Approx. 70	Approx. 250	15	Approx. 1.4kg
PH8HF-S3-JPT-T-□□-JP	Rc1	70	Approx. 60	Approx. 70	Approx. 245	17	Approx. 4kg
PH8HF-PP-NPT-T-□□-NP	1NPT	80	Approx. 60	Approx. 70	Approx. 250	15	Approx. 1.4kg
PH8HF-S3-NPT-T-□□-NP	1NPT	70	Approx. 60	Approx. 70	Approx. 245	17	Approx. 4kg

□ Mounting Hardware (Option Code : /MF1) Weight : Approx. 0.5kg



Unless otherwise specified, differences in the dimensions are specified as: General tolerance =  $\pm$ (Criteria of tolerance class IT18 in JIS B0401-1998)/2.