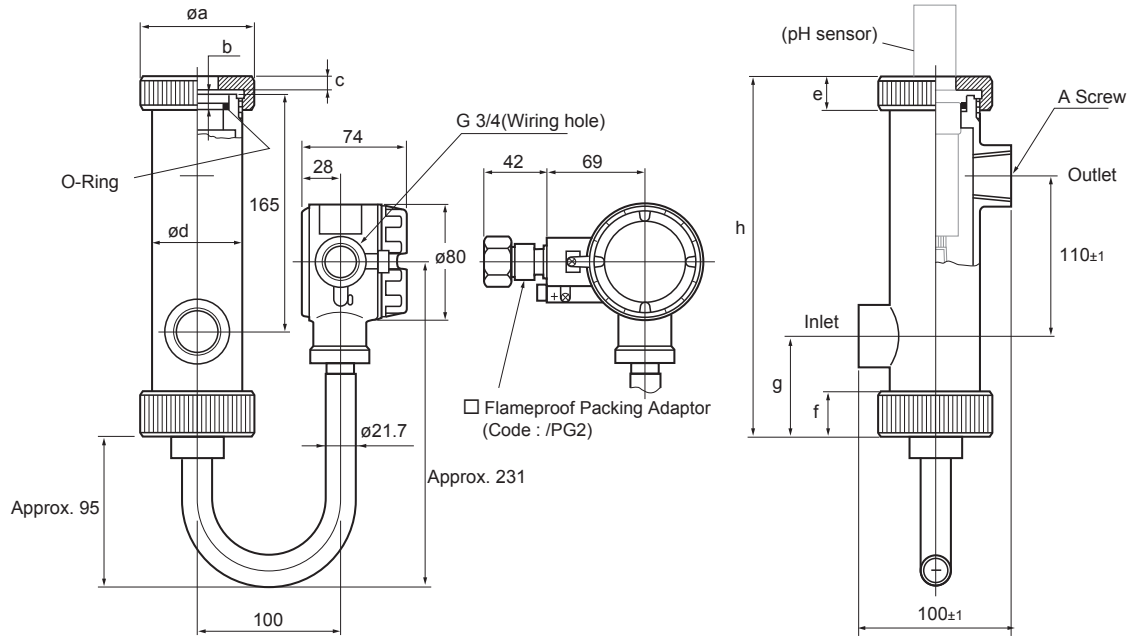


Drawings

PH8HFF - □□ - □PT -T - □□ - JS EXA PH Flow - Through Type Holder [Style: S2] (with Frameproof type Ultrasonic Cleaner)

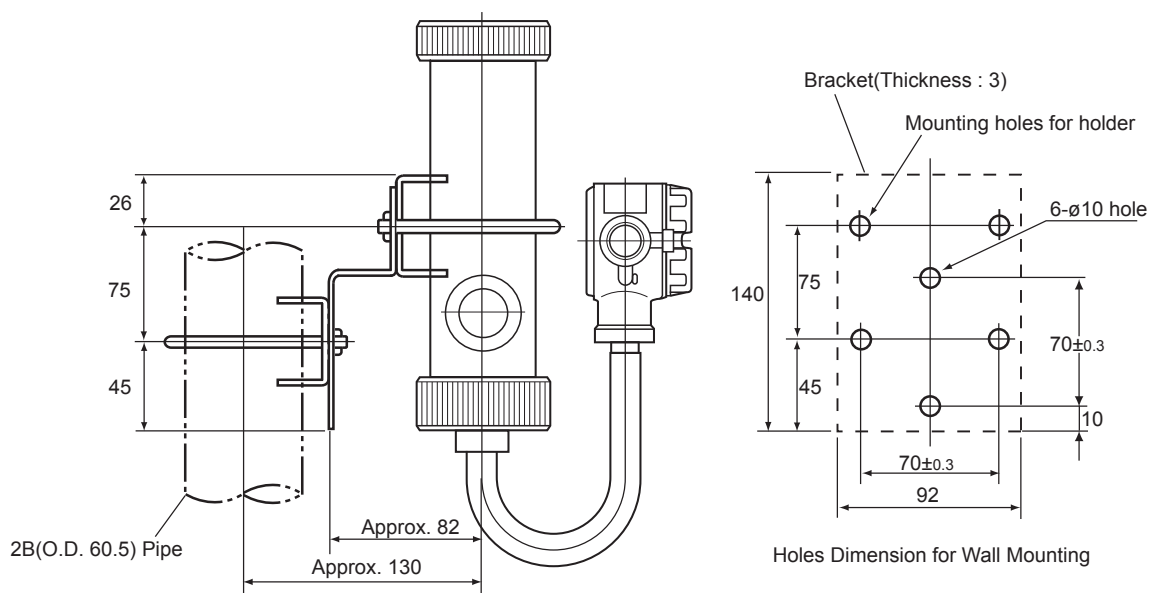
Unit: mm



Model and Code	A Screw	a	b	c	d	e	f	g	h	Weight
PH8HFF-PP-JPT-T-□□-JS	Rc1	80	9	11	60	25	30	70	Approx. 250	Approx. 3kg
PH8HFF-S3-JPT-T-□□-JS	Rc1	70	10	6	60.5	26	26	69	Approx. 245	Approx. 5.6kg
PH8HFF-PP-NPT-T-□□-JS	1NPT	80	9	11	60	25	30	70	Approx. 250	Approx. 3kg
PH8HFF-S3-NPT-T-□□-JS	1NPT	70	10	6	60.5	26	26	69	Approx. 245	Approx. 5.6kg

□ Mounting Hardware (Option Code : /MF1)

Weight : Approx. 0.5kg



Unless otherwise specified, differences in the dimensions are specified as: General tolerance = ±(Criteria of tolerance class IT18 in JIS B0401-1998)/2.