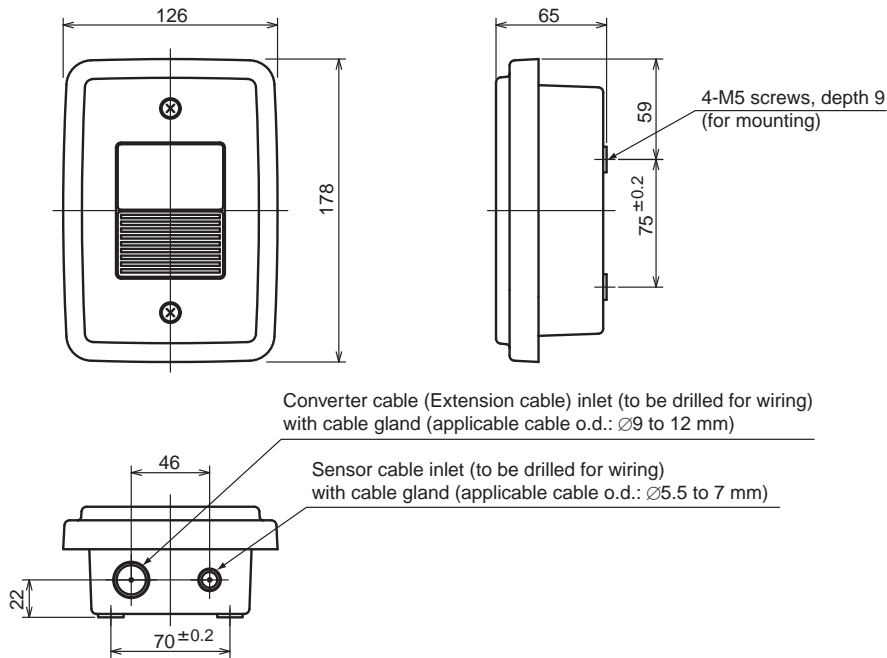


Drawings

Dissolved-oxygen Metering System WTB10-DO3, WTB10-DO4 Terminal Box

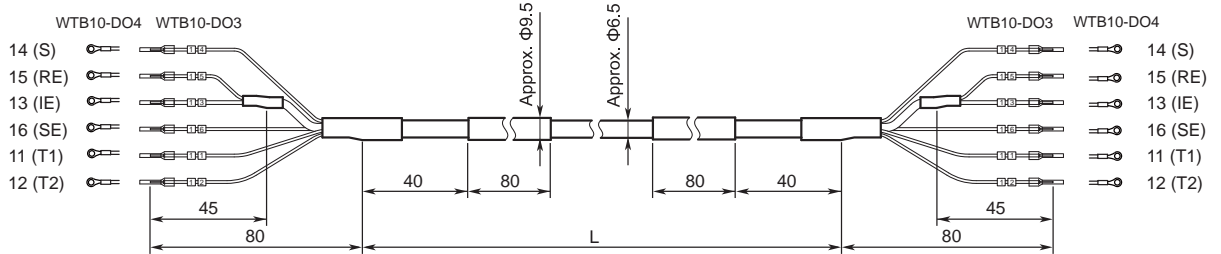
EXA 00

Unit : mm



Weight : Approx. 0.5 kg

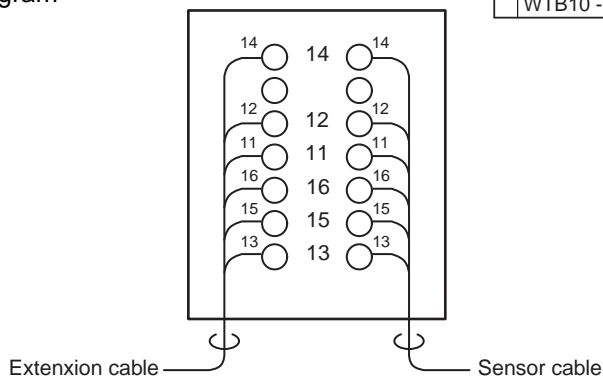
Extension cable



Weight : Approx. 120 g / m

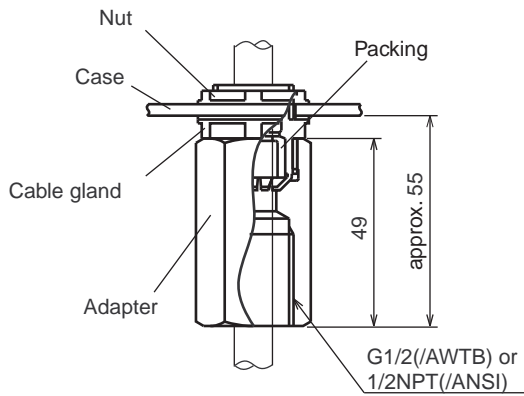
Model and Suffix Code		L (mm)
WTB10 - DO3 - NN - 05,	WTB10 - DO4 - NN - 05	Approx. 5000
WTB10 - DO3 - NN - 10,	WTB10 - DO4 - NN - 10	Approx. 10000
WTB10 - DO3 - NN - 20,	WTB10 - DO4 - NN - 20	Approx. 20000
WTB10 - DO3 - NN - 30,	WTB10 - DO4 - NN - 30	Approx. 30000
WTB10 - DO3 - NN - 40,	WTB10 - DO4 - NN - 40	Approx. 40000

Wiring Diagram



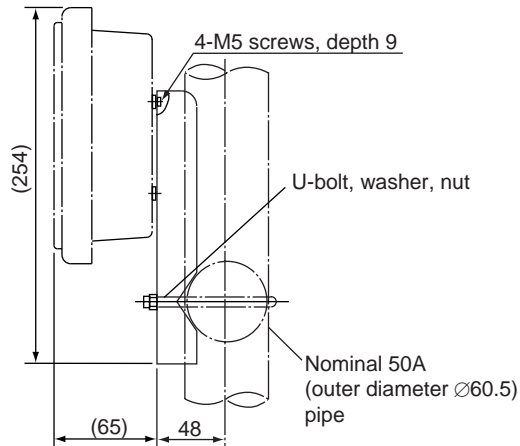
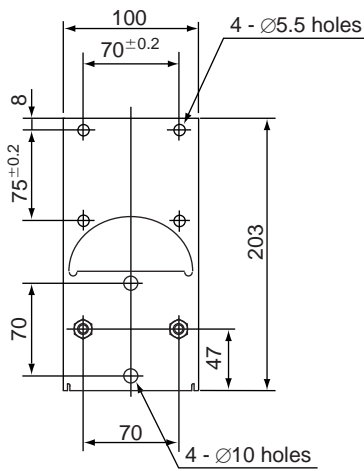
Unless otherwise specified, differences in the dimensions are specified as : General tolerance=±(Criteria of tolerance class IT18 in JIS B0401)/2.

Conduit Adapter (□ /AWTB, □ /ANSI)



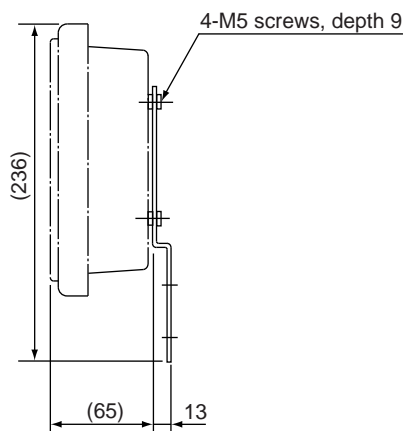
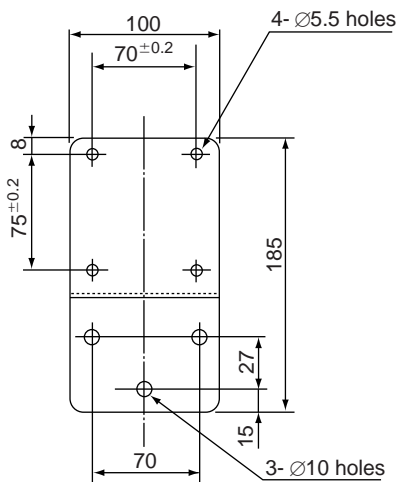
Note : A complete set of these adapters will protect the extension cable with a conduit from damage. Attach these adapters to the cable gland of the extension cable and the extension cable opening on the terminal box. A JIS A 15 type cable gland for the converter is included. Exchange a DIN Pg 16 or M20 type cable gland of the converter.

□Pipe mounting bracket (optional)
(with the / P option)



Weight : Approx. 0.7 kg

□Wall mounting bracket (optional)
(with the / W option)



Weight : Approx. 0.3 kg

Unless otherwise specified, differences in the dimensions are specified as : General tolerance=±(Criteria of tolerance class IT18 in JIS B0401-1986)/2.