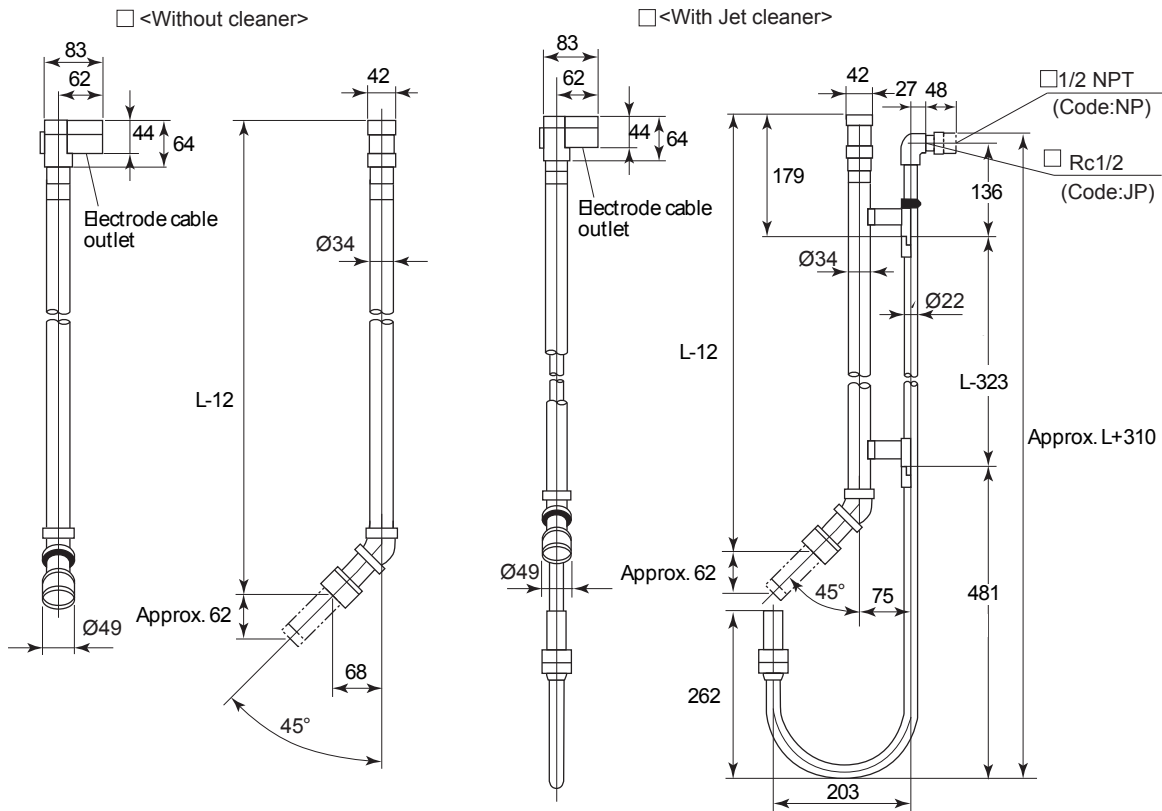


Drawings

DOX8HS-S3 Submersion Type Holder

□ DOX8HS-S3- □□-C (For DO30G and SS300G)

UNIT: mm



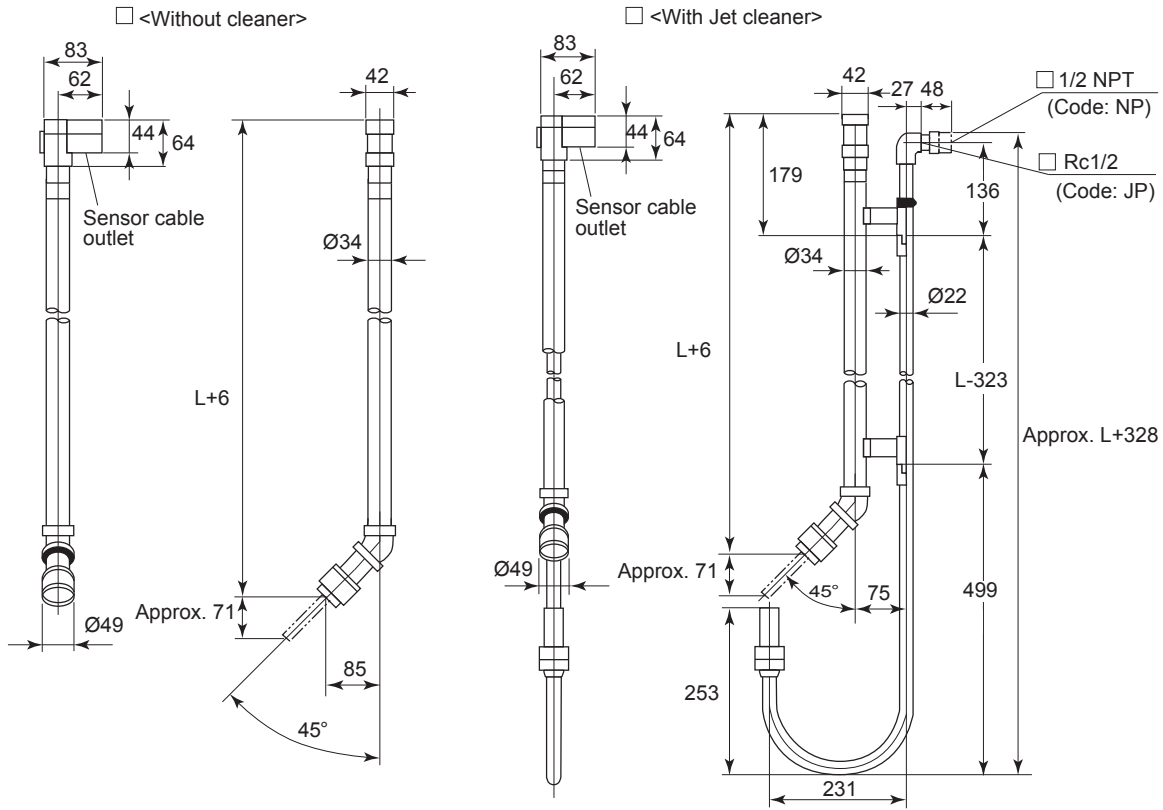
Specification of Holder (Model and Code)	Weight (Approx.)				
	Nominal Holder Length (L)				
	1000 mm [Code:10]	1500 mm [Code:15]	2000 mm [Code:20]	2500 mm [Code:25]	3000 mm [Code:30]
Without Cleaner DOX8HS-S3-□□-C-NN-NN*B/□□	1.9 kg	3.1 kg	4.3 kg	5.5 kg	6.7 kg
With Jet cleaner DOX8HS-S3-□□-C-JT-□P*B/□□	4.1 kg	5.6 kg	7.1 kg	8.6 kg	10.1 kg

Specification of Holder (Model and Code)	Weight (Approx.)	
	Nominal Holder Length (L)	
	3500 mm [Code:-35]	4000 mm [Code:-40]
Without Cleaner DOX8HS-S3-□□-C-NN-NN*B/□□	7.9 kg	9.1 kg
With Jet cleaner DOX8HS-S3-□□-C-JT-□P*B/□□	11.6 kg	13.1 kg

Unless otherwise specified, differences in the dimensions are specified as: General tolerance = ±(Criteria of tolerance class IT18 in JIS B0401-1998)/2.

□ DOX8HS-S3- □□-L (For DO70G)

UNIT: mm



Specification of Holder (Model and Code)	Weight (Approx.)				
	Nominal Holder Length (L)				
	1000 mm [Code:-10]	1500 mm [Code:-15]	2000 mm [Code:-20]	2500 mm [Code:-25]	3000 mm [Code:-30]
Without Cleaner DOX8HS-S3-□□-L-NN-NN*B/□□	2.0 kg	3.2 kg	4.4 kg	5.6 kg	6.8 kg
With Jet cleaner DOX8HS-S3-□□-L-JT-□P*B/□□	4.2 kg	5.7 kg	7.2 kg	8.7 kg	10.2 kg

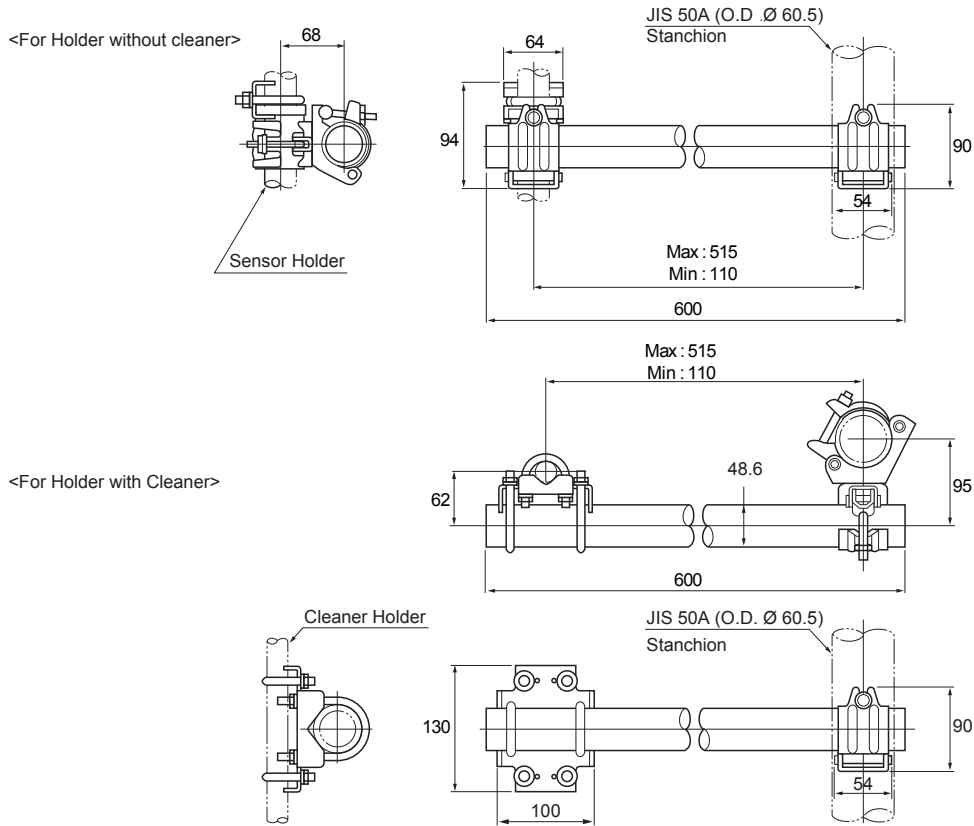
Specification of Holder (Model and Code)	Weight (Approx.)	
	Nominal Holder Length (L)	
	3500 mm [Code:-35]	4000 mm [Code:-40]
Without Cleaner DOX8HS-S3-□□-L-NN-NN*B/□□	8.0 kg	9.2 kg
With Jet cleaner DOX8HS-S3-□□-L-JT-□P*B/□□	11.7 kg	13.2 kg

F20-1.

Unless otherwise specified, differences in the dimensions are specified as: General tolerance = ±(Criteria of tolerance class IT18 in JIS B0401-1998)/2.

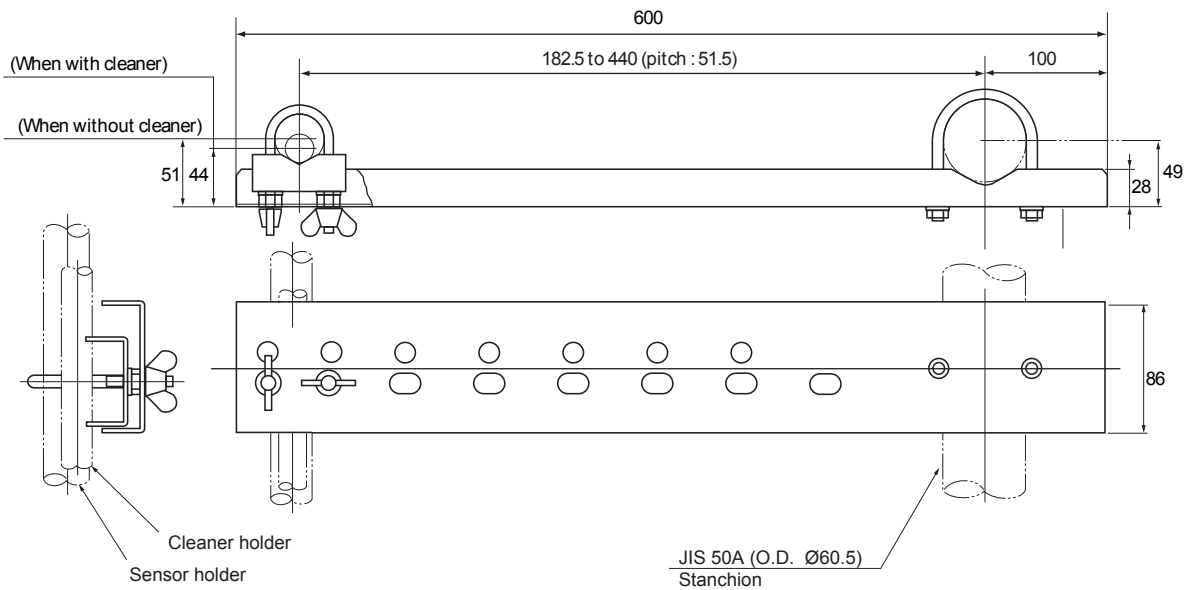
Mounting Hardware (Weight : Approx. 1kg)

- / MS1 - 1 set
- / MS2 - 2 sets



Stainless (Weight : Approx. 1kg)

- / MS5- 1 set
- / MS6 - 2 sets



Unless otherwise specified, differences in the dimensions are specified as: General tolerance = \pm (Criteria of tolerance class IT18 in JIS B0401-1998)/2.