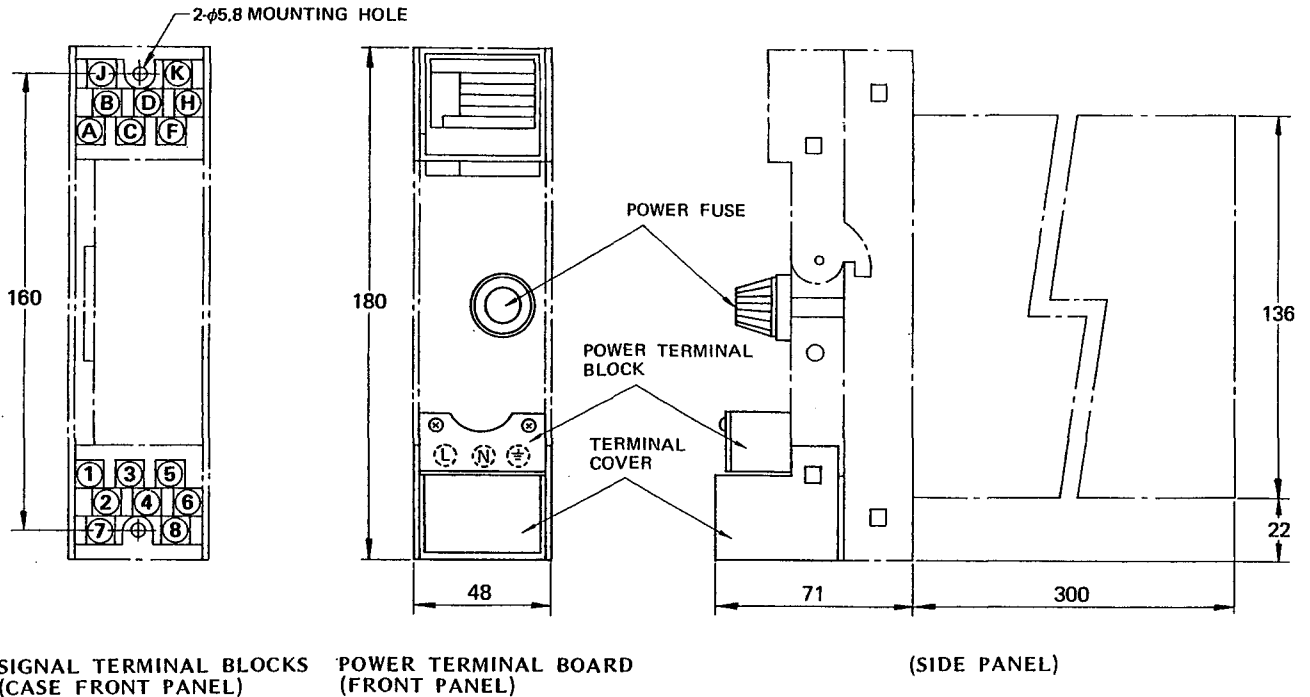


Unit : mm  
(approx. inch)



#### POWER - GROUND TERMINAL CONNECTIONS

Terminal Designation	Description
L N	> Power Supply (DC or AC)
	Ground

Power - Ground Terminal Screws: M4  
Signal Terminal Screws : M4

- Note 1.** This SD applies to the power terminal block (/TB) option which is offered for YEW SERIES 80 Rack-Mounting Instruments.
- Note 2.** If the YEW SERIES 80 Rack-Mounting Instrument has /TB option, use this SD together with the SD for the basic instrument.
- Note 3.** In the figures above, external views and dimensions of power terminal block, terminal cover and power fuse are shown with solid lines. Refer to the basic model SD for details of other parts shown with dashed lines.
- Note 4.** Use this SD for power and ground connections. Use the SD of the basic instrument for manufacturing specifications other than power and ground terminal board.

Remarks \_\_\_\_\_

(Formerly SD 1B4J1-11E)