

Technical Information

TI 04L41B01-06EN

Daqstation
DX/DXAdvanced Setup File
Conversion Tool
Operation Guide



Introduction

Please read through this operation guide carefully before using the software.



IMPORTANT

Use of this conversion tool does not guarantee 100% compatibility of settings with the old DX series.

Of all of the differences in functions, settings, and setting methods between the old DX series and the DXAdvanced series, some settings are not changed, and some changes are conditional.

After converting setup files with this conversion tool, check the converted settings using the DAQSTANDARD hardware settings or DX main unit, and adjust those settings as necessary.

With regard to your specific application, please set the date/time, settings not saved to setup files, functions added with the DXAdvanced series, and other settings as needed.

■ Notice

- The contents of this manual are subject to change without notice as a result of continuing improvements to the performance and functions.
- Every effort has been made to ensure accuracy in the preparation of this manual. Should any errors or omissions come to your attention, however, please inform Yokogawa Electric's sales office or sales representative.
- Under no circumstances may the contents of this manual, in part or in whole, be transcribed or copied without our permission.

■ Trademarks

- Our product names or brand names mentioned in this manual are the trademarks or registered trademarks of Yokogawa Electric Corporation (hereinafter referred to as YOKOGAWA).
- Microsoft, MS-DOS, Windows, Windows XP, and Windows Vista are either registered trademarks or trademarks of Microsoft Corporation in the United States and/or other countries.
- Adobe, Acrobat, and Postscript are either registered trademarks or trademarks of Adobe Systems Incorporated.
- We do not use the TM or ® mark to indicate these trademarks or registered trademarks in this manual.
- All other product names mentioned in this manual are trademarks or registered trademarks of their respective companies.

Safety Precautions

■ Scope of the Manual

This manual does not explain the basic operations of the operating systems. For information regarding the basic operations of Windows, see the user's guide that came with Windows.

■ Warning and Disclaimer

- YOKOGAWA makes no warranties regarding the software.
- The software is provided on an "as is" basis. YOKOGAWA assumes no liability to any person or entity for any loss or damage, direct or indirect, arising from the use of the software or from any unpredictable defect of the software.

■ Notes on Software

- It is strictly prohibited to reproduce the product except for backup purposes.
- All reverse-engineering operations, such as reverse compilation or the reverse assembly of the software are strictly prohibited.
- No part of the software may be transferred, converted, or sublet for use by any third party, without prior written consent from YOKOGAWA.

Daqstation DX/DXAdvanced Setup File Conversion Tool Operation Guide

TI 04L41B01-06EN

CONTENTS

Introduction	i
Safety Precautions.....	ii
1. Regarding the Setup File Conversion Tool	1-1
1.1 Overview	1-1
1.2 Required PC System Environment	1-1
1.3 Conversion Objects	1-1
1.4 Conversion Conditions	1-2
1.5 Regarding Converted Setup Files	1-3
1.6 Loading Setup Files	1-4
1.7 Displaying the Version Information	1-4
2. Converting Setup File	2-1
2.1 Starting and Exiting	2-1
2.2 Specifying a Source File	2-1
2.3 Specifying a Destination Setup File.....	2-2
2.4 Execution of Converting	2-2
3. Messages and Corrective Actions	3-1
Revision Information	i

1. Regarding the Setup File Conversion Tool

1.1 Overview

The DX/DXAdvanced setup file conversion tool is a tool for converting old DX series (DX100/DX200) setup files to ones compatible with the DXAdvanced series (DX1000/DX1000N/DX2000). This is designed to reduce time spent on setting up a DXAdvanced series after replacement of your DX series, and to make the replacement in general as efficient as possible.

- **Download site**

Download the tool from the Yokogawa Web site (<http://www.yokogawa.com/ns/dxadv/download/>).

1.2 Required PC System Environment

The following hardware and software are required to use this software.

OS	Windows XP	Windows Vista	Windows 7
Version	Professional sp2, SP3 (excluding the Professional x64 Edition)	Business SP2 (excluding the 64-bit edition)	Professional (excluding the 64-bit edition)
CPU	Pentium II, 333 MHz or faster	Pentium IV, 3 GHz or faster	
Memory	128 MB or more	2 GB or more	
Hard disk	100 MB or more of free space. NTFS is recommended.		

1.3 Conversion Objects

The files supported by the tool are given below.

	Object models	Version number	The file extension
Source	DX100 ^{*1} , DX200 ^{*1}	Release number 4 ^{*2}	.pnl
Destination	DX1000 ^{*3} , DX1000N ^{*3} , DX2000 ^{*3}	Release number 4	.PDL

^{*1} The setup files for special order products can also be converted, but the results cannot be guaranteed.

^{*2} Setup files of release number 3 and earlier can also be converted, but the results cannot be guaranteed.

^{*3} Except for Advanced security function (/AS1 option).

1.4 Conversion Conditions

Of all of the differences in functions, settings, and setting methods between the old DX series and the DXAdvanced series, some settings are not changed, and some changes are conditional. After converting setup files with this conversion tool, check the converted settings using the DAQSTANDARD hardware settings or DX main unit, and adjust those settings as necessary.

● Settings that cannot be converted

Old DX Settings Items	Explanation for DXAdvanced (Corrective Action)
Daylight savings time	Set the daylight savings time.
Settings of the Saved data during Manual Save	Only for collectively storing unsaved data.
Input Filter (Only for DX102/DX104/DX204/DX208)	There is no function.
Application name, Supervisor name, Manager name	Set to the text field.
Batch number and Lot number	Set the Batch number and Lot number.
Comment number and Comment Text.	Set to the Batch Comment.
Information of the stored data	The file name and time can be displayed in the information display of the display selection menu.
Number of blocks of Event data	There is no function.
Memory Alarm Time	There is no function.
Communication settings for Memory out	Setting is unnecessary.
Presence or absence of a key login/logout user ID	There is no function.
DNS settings	Set the DNS accession.

● Conditions for conversion

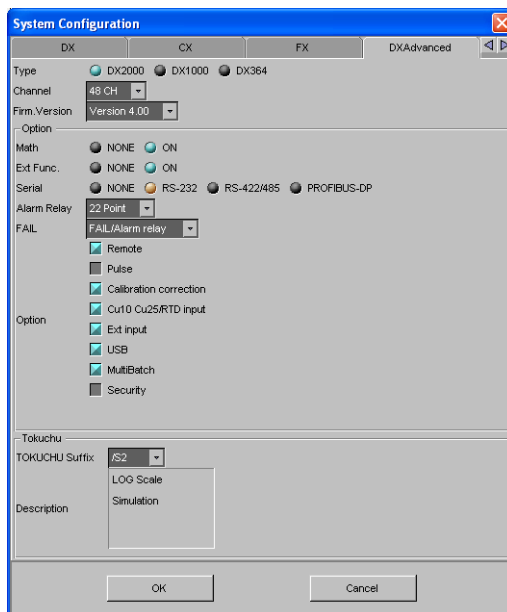
Conversion Source Settings	Destination Settings
The number of digits of the upper/lower limit of span (4digit) when the measurement channel mode is Voltage, Scale, Delta, or Sqrt, and measurement range is 20 mV, 200 mV, 2 V, or 20 V.	Converted to 5 digits.
Computation channels 31 to 60	Converted to 101 to 130.
The number of digits of the Alarm value (4digit) when the measurement channel mode is Voltage or Delta, and measurement range is 20 mV, 200 mV, 2 V, or 20 V.	Converted to 5 digits.
The Boundary value for the expanded display (4digit) when the measurement channel mode is Voltage or Delta, and measurement range is 20 mV, 200 mV, 2 V, or 20 V.	Converted to 5 digits.
Trend display direction : [Horizon2]	Trend display direction : [Wide]
Scale division settings of Trend/Bar graph : [C10]	Scale division : [C10] Bar graph division : [10]
Backlight Saver : [On]	Back light saver mode : [Dimmer]

Conversion Source Settings	Destination Settings
Alarm Hysteresis : [On]	Alarm hysteresis of measurement channel upper/lower limit : [0.5]
Alarm Hysteresis : [Off]	Alarm hysteresis of measurement channel upper/lower limit : [0]
Data length of Event data : [3min] or [5min]	Data length of Event data : [10min]
Remote Action : [Trigger] and External Trigger : [On]	Set to the Event Action. Note that when the external trigger is [OFF], it is not set.
Key login Use/Not : [Use]	Key settings of Security : [Login]
Auto logout : [On]	Auto logout : [10min]
Key lock settings when the Key lock : [Use] and Key login : [Use]	Key lock settings is set to "Authority of user Key action."
User name and password when the key login setup : [Disable]	User registration is set to User.
User name and password when the key login setup : [Enable]	User registration is set to Administrator. However, if there are more than 5 administrators, it is set to User.
User name and password when the Page type of Web server : [Monitor]	Set to the User.
User name and password when the Page type of Web server : [Operator]	Set to the Administrator. However, if there are more than 5 administrators, it is set to User.

1.5 Regarding Converted Setup Files

Setup file headers regardless of the source model are generated with the DX2000 maximum specifications and options (excluding /AS1, /PM1), but the header is not referenced when loading Setup files on DXAdvanced and therefore has no effect. The display is as described below when displaying system configuration by the DAQSTANDARD Hardware settings.

- Header of the setup files



1.6 Loading Setup Files

Use Basic Setting mode when loading setup files on DXAdvanced. If you load them while in Setting mode, the basic settings will not be loaded. Also, settings that do not match the DXAdvanced main unit specifications will result in an error, and the settings will not be changed. After loading, check the settings and make any adjustments as necessary.

Ex. Settings with channel numbers not installed

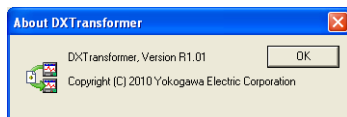
- An error is displayed on the DXAdvanced main unit
Error code : 3 (Setting error)
Message : A disabled channel is selected.

1.7 Displaying the Version Information

1. Click the icon on the upper left to Open the System menu.



2. Click the [About DXTransformer].
The [About DXTransformer] dialog box appears.



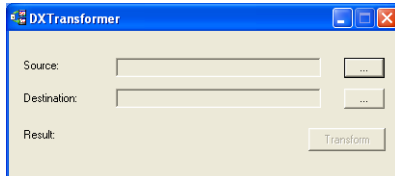
3. To close the dialog box, click [OK].

2. Converting Setup File

2.1 Starting and Exiting

- **Starting**

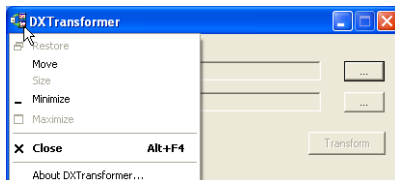
Double click the DXTransformer.exe. The DXTransformer screen is displayed.



- **Exiting**

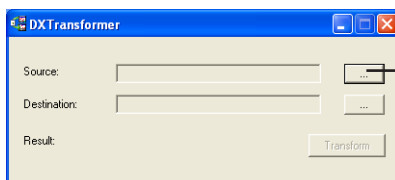
Click the icon on the upper left to Open the System menu.

To close the dialog box, click the [Close].



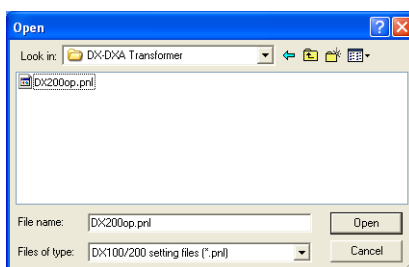
2.2 Specifying a Source File

1. Click the [Source] file path specification button.
The [Open] dialog box appears.



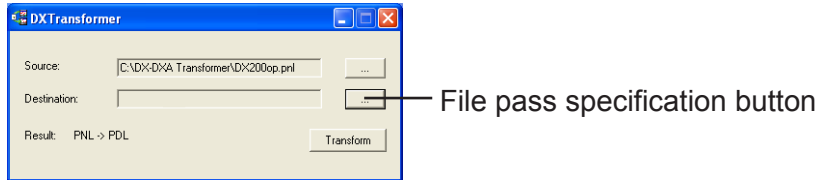
File path specification button

2. Specify a source setup file, click the [Open]
The specified file name appears in the [Source] edit box.

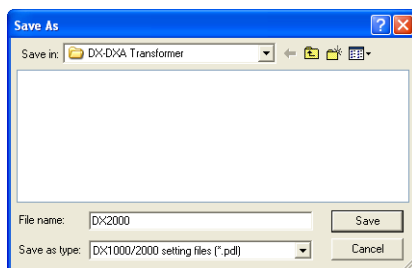


2.3 Specifying a Destination Setup File

1. Click the [Destination] file path specification button.
[Save As] dialog box is displayed.



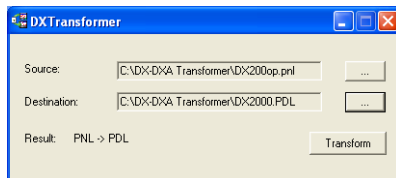
2. Specify a folder and file for the save destination, click the [Save].
The specified file name appears in the [Destination] edit box.



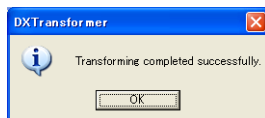
2.4 Execution of Converting

Click the [Transform]. If conversion was successful, the message, "Transforming completed successfully" appears.

To close the dialog box, click the [OK].



Message when conversion is successful.



3. Messages and Corrective Actions

The following messages may appear on the DX/DXAdvanced Setup File Conversion Tool.

Message	Explanation (Corrective Action)
Setting file can not be found.	If the conversion source file was not found, or if the file name was incorrect. Check whether the file and folder names are correct.
Setting file is error format.	The setting file is corrupt, or its format is incorrect. (Not a conversion source settings file) Specifying a correct file name.
Disk is full.	Ensure that there is sufficient free space.
File name is invalid.	The conversion destination settings file name exceeded 258 bytes, or illegal characters were used in the name. Specifying a correct file name.
XXX file already exists. Do you want to replace it?	Determine whether or not to overwrite the existing file.
Transforming completed successfully.	Transforming completed successfully.

Revision Information

Title : DX/DXAdvanced Setup File Conversion Tool Operation Guide

Manual number : TI 04L41B01-06EN

Sept. 2010/1st Edition

Newly published.

Written by Yokogawa Electric Corporation
Published by Yokogawa Electric Corporation
2-9-32 Nakacho, Musashino-shi, Tokyo 180-8750, JAPAN