



# DXA Date, Time, DST, and GMT Setup

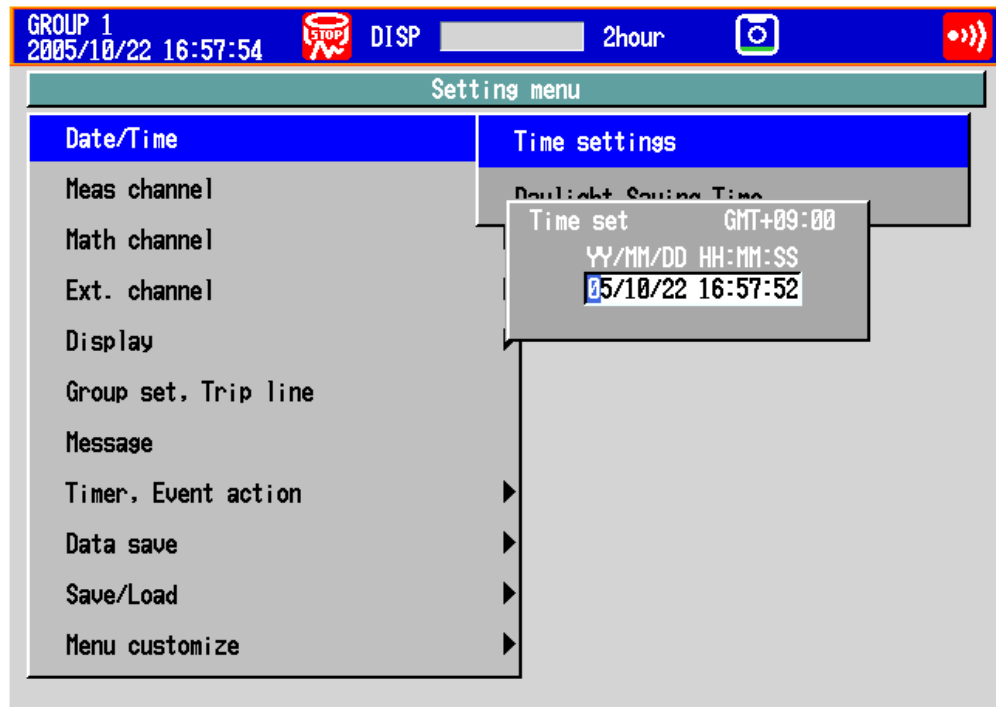
Tech note TN12012

- ❖ This tech note describes how to set the **Date**, **Time**, **DST** and the **GMT** settings on any of the DXA recorders.
- ❖ It includes the DX1000, DX1000N, DX1000T, DX2000, and the DX2000T line of products.
- ❖ If you need more details, please refer to your user manual.

# ❖ 1. DATE AND TIME SETUP

- **Date/Time**

Press **MENU** (to switch to setting mode), and select the **Menu** tab > **Date/Time** > **Time Settings**



- **Time set**

Enter the date and time and press **DISP/ENTER**.

## ❖ 2. DST SETUP

- **DST**

Press **MENU** (to switch to setting mode), and select the **Menu** tab > **Date/Time** > **Daylight savings time**

GROUP 1  
2008/12/03 00:57:02 STOP DISP 1hour

Date/time > Daylight savings time

Daylight savings time

Use/Not ☒ Use

Start time :

Month

Day order

Day of the week

Hour of the day

End time :

Month

Day order

Day of the week

Hour of the day

- **Daylight savings time > Use/Not**

To set a daylight saving time period, select **Use**.

- **Daylight savings time > Start time**

Specify the date and time when daylight saving time starts.

Item	Description
Month	Specify the month.
Day order (week order)	Specify the week within the month. Specify [Last] for the last week in the month.
Day of the week	Specify the day of the week.
Hour of the day	Specify the hour using a value from 0 to 23.

- **Daylight savings time > End time**

Specify the date and time when daylight saving time ends. The settings here are the same as those for Start time.

## ❖ 3. GMT SETUP

Press **MENU** (to switch to setting mode), hold down **FUNC** for 3 s (to switch to basic setting mode), and select the **Menu** tab > **Time settings**

The screenshot shows the 'Basic Settings Mode' interface. At the top, a blue bar contains 'Basic Settings Mode' and 'Ethernet Link' with a green indicator. Below this is an orange bar labeled 'Time settings'. The main area is a grey box titled 'Time settings' containing four settings: 'Time zone(HMM)' with a value of '900', 'Time deviation limit' with '30s', 'Date format' with 'Y/M/D', and 'Calendar display' with '1st weekday' and 'MON'. An 'Input' button is at the bottom left.

Time settings	
Time zone(HMM)	900
Time deviation limit	30s
Date format	Y/M/D
Calendar display	1st weekday
	MON

Input

- **Date & Time > Time zone**

Set the time zone of the region in which the DX will be used in terms of the time difference from GMT. Specify a value in the range of -1300 to 1300 (where the first two digits denote the hour and the last two digits denote the minute). A negative value indicates that the local time is behind the GMT.

Example: The standard time in Japan is ahead of the GMT by 9 hours. In this case, enter "900."



# Thank you!